

UNDERSEA FEATURE NAME PROPOSAL
(See IHO-IOC Publication B-6 and NOTE overleaf)

Note: The boxes will expand as you fill the form.

Name Proposed:	Nuoju Knoll	Ocean or Sea:	East Pacific
-----------------------	-------------	----------------------	--------------

Geometry that best defines the feature (Yes/No) :						
Point	Line	Polygon	Multiple points	Multiple lines*	Multiple polygons*	Combination of geometries*
		Yes				

* Geometry should be clearly distinguished when providing the coordinates below.

	Lat. (e.g. 63°32.6'N)	Long. (e.g. 046°21.3'W)
Coordinates:	0°38.4'N (Top)	101°25.4'W(Top)
	0°36.5'N (Bottom)	101°26.3'W (Bottom)
	0°37.6'N	101°27.2'W
	0°39.4'N	101°27.0'W
	0°40.2'N	101°25.6'W
	0°39.4'N	101°24.1'W
	0°37.0'N	101°24.2'W
	0°36.6'N	101°25.1'W
	0°36.5'N	101°26.3'W

Feature Description:	Maximum Depth:	3200 m	Steepness :	
	Minimum Depth :	2650 m	Shape :	
	Total Relief :	550 m	Dimension/Size :	7.5 km * 7.2 km

Associated Features:	Nuoju Knoll is located at 240 km northwest to Xiaoge Hill and distance to Yipu Hill less than 50 km. It has a nearly round overlook plane shape.
-----------------------------	--

Chart/Map References:	Shown Named on Map/Chart:	
	Shown Unnamed on Map/Chart:	GEBCO 5.07
	Within Area of Map/Chart:	

Reason for Choice of Name (if a person, state how associated with the feature to be named):	Nuoju comes from a poem named Yuzao in Shijing·Xiaoya. Shijing is a collection of ancient Chinese Poems from 11 th century B.C. to 6 th century B.C. "Where is fish? Among the algae is the fish, sheltered by the weeds. Where is the king? Here in Hao is the king; A peaceful life he leads." "Nuoju" means that the King leads a peaceful life.
--	---

Discovery Facts:	Discovery Date:	2009
	Discoverer (Individual, Ship):	Chinese R/V Dayang Yihao

Supporting Survey Data, including Track Controls:	Date of Survey:	2009
	Survey Ship:	Chinese R/V Dayang Yihao
	Sounding Equipment:	Multi-beam Echo Sounding System (Seabeam2112)
	Type of Navigation:	GPS

	Estimated Horizontal Accuracy (nm):	≤0.08nm
	Survey Track Spacing:	5nm
	Supporting material can be submitted as Annex in analog or digital form: see Annex	

Proposer(s):	Name(s):	China Ocean Mineral Resources R&D Association (COMRA)
	Date:	July 1, 2017
	E-mail:	jln@comra.org
	Organization and Address:	Fuxingmenwai Street No.1, Beijing, China China Ocean Mineral Resources R&D Association
	Concurrer (name, e-mail, organization and address):	

Remarks:	<p>The proposal has been reviewed and approved by Sub-Committee on Undersea Feature Names of China Committee on Geographical Names (CCUFN).</p> <p>And the proposal has also been published in "Chinese Gazetteer of Undersea Features on the International Seabed(2016)".</p> <p>No.1, Fuxingmenwai Street, Xicheng District, Beijing, China, 100860 heyunxu@sina.com</p>
-----------------	--

NOTE : This form should be forwarded, when completed :

- a) **If the undersea feature is located inside the external limit of the territorial sea :-**
to your "National Authority for Approval of Undersea Feature Names" (see Publication B-6) or, if this does not exist or is not known, either to the IHO or to the IOC (see addresses below);
- b) **If at least 50 % of the undersea feature is located outside the external limits of the territorial sea :-**
to the IHO or to the IOC, at the following addresses :

International Hydrographic Organization (IHO) 4, Quai Antoine 1er B.P. 445 MC 98011 MONACO CEDEX Principality of MONACO Fax: +377 93 10 81 40 E-mail: info@iho.int Web: www.iho.int	Intergovernmental Oceanographic Commission (IOC) UNESCO Place de Fontenoy 75700 PARIS France Fax: +33 1 45 68 58 12 E-mail: info@unesco.org Web: http://ioc-unesco.org/
---	--

ANNEX

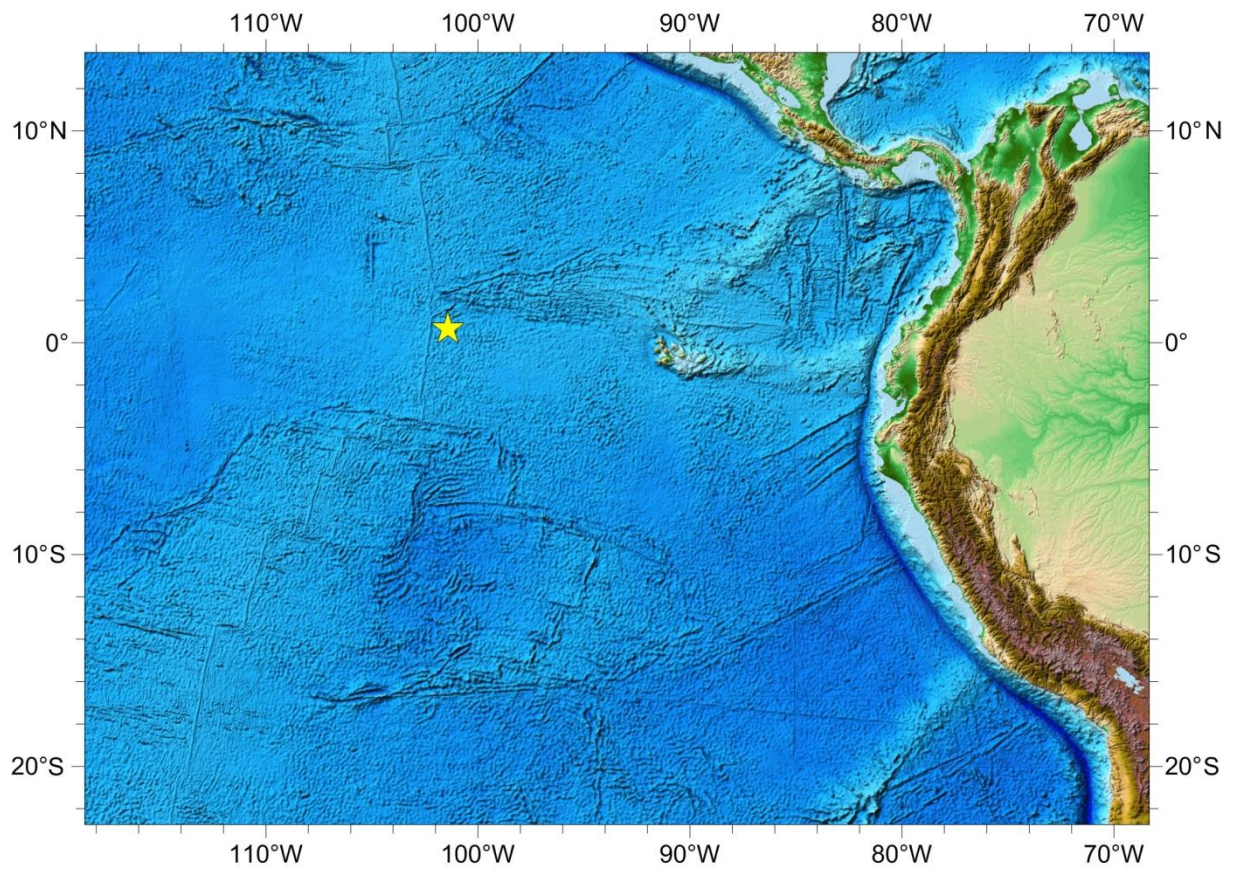


Fig. 1 Location of Nuoju Knoll

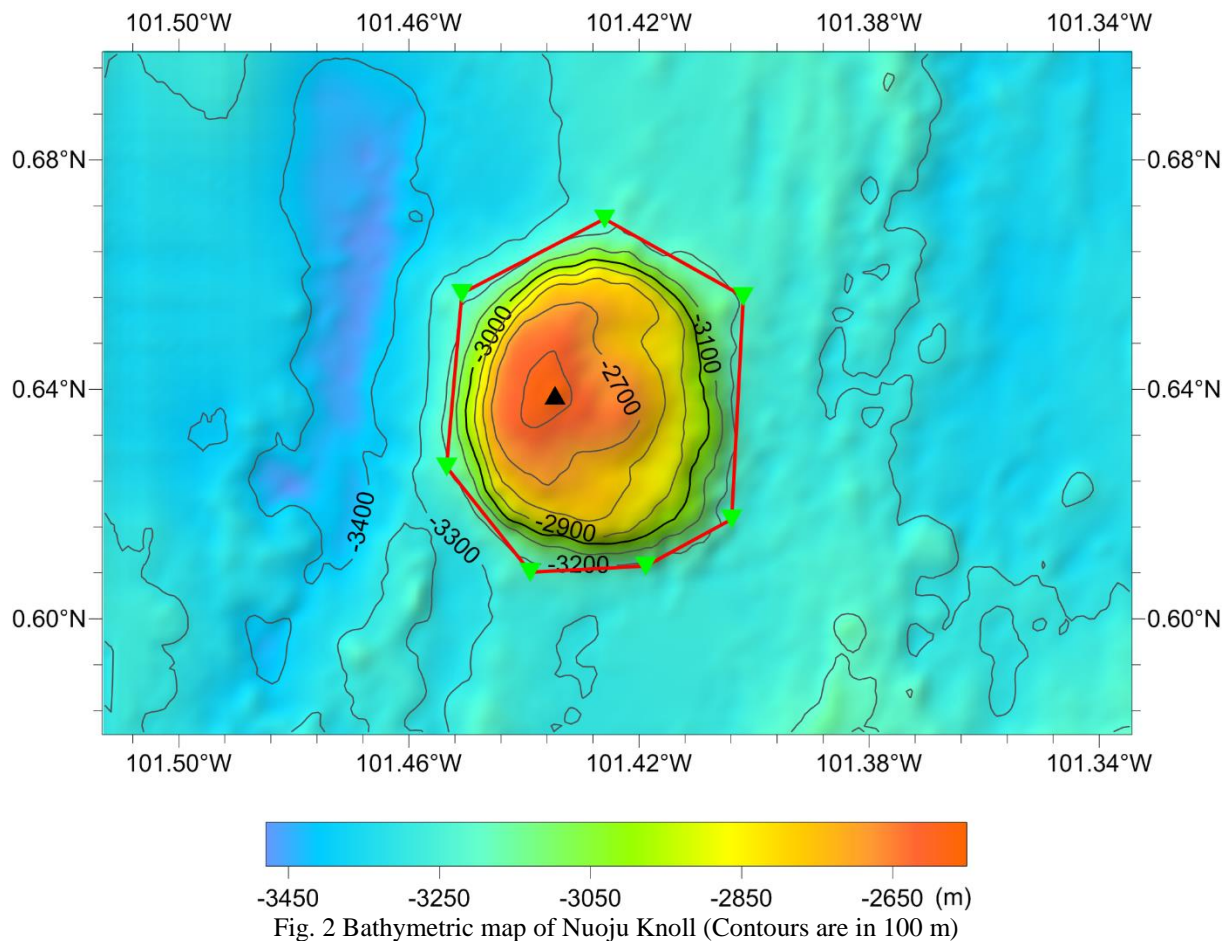


Fig. 2 Bathymetric map of Nuoju Knoll (Contours are in 100 m)

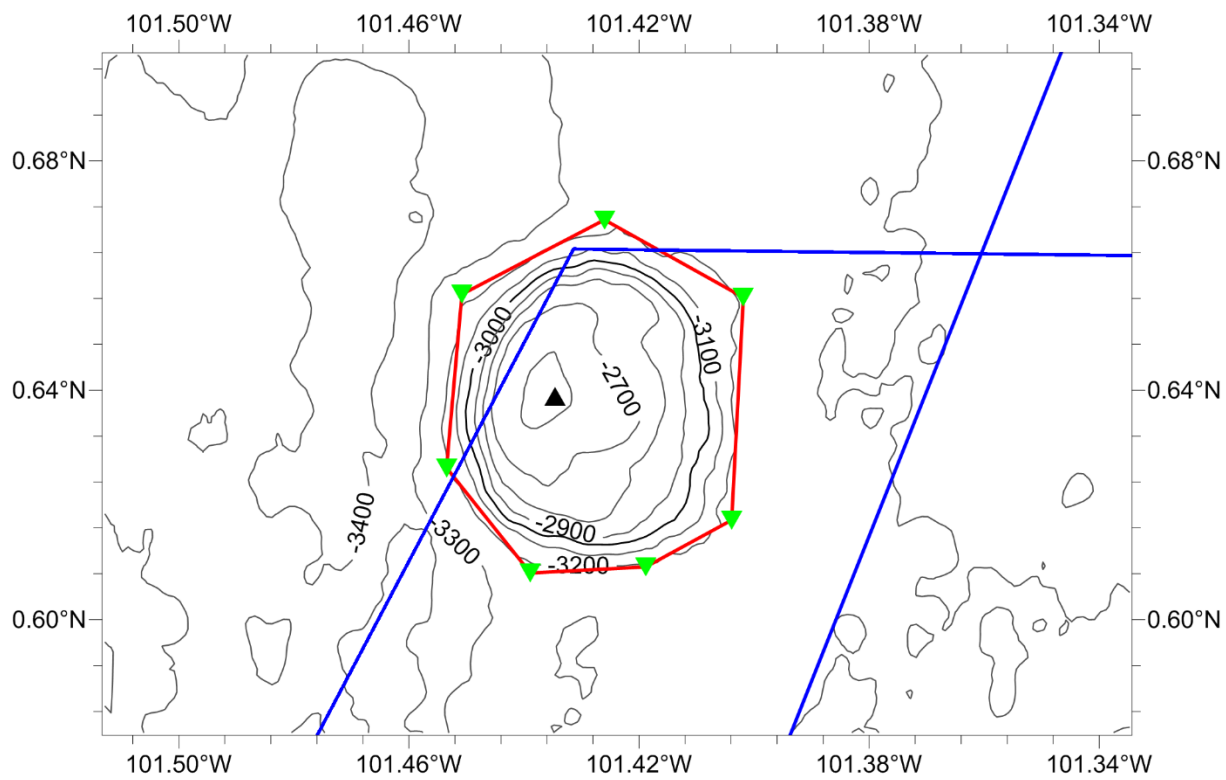


Fig. 3 Bathymetric and survey line map of Nuoju Knoll (Contours are in 100 m, blue ones are survey lines)

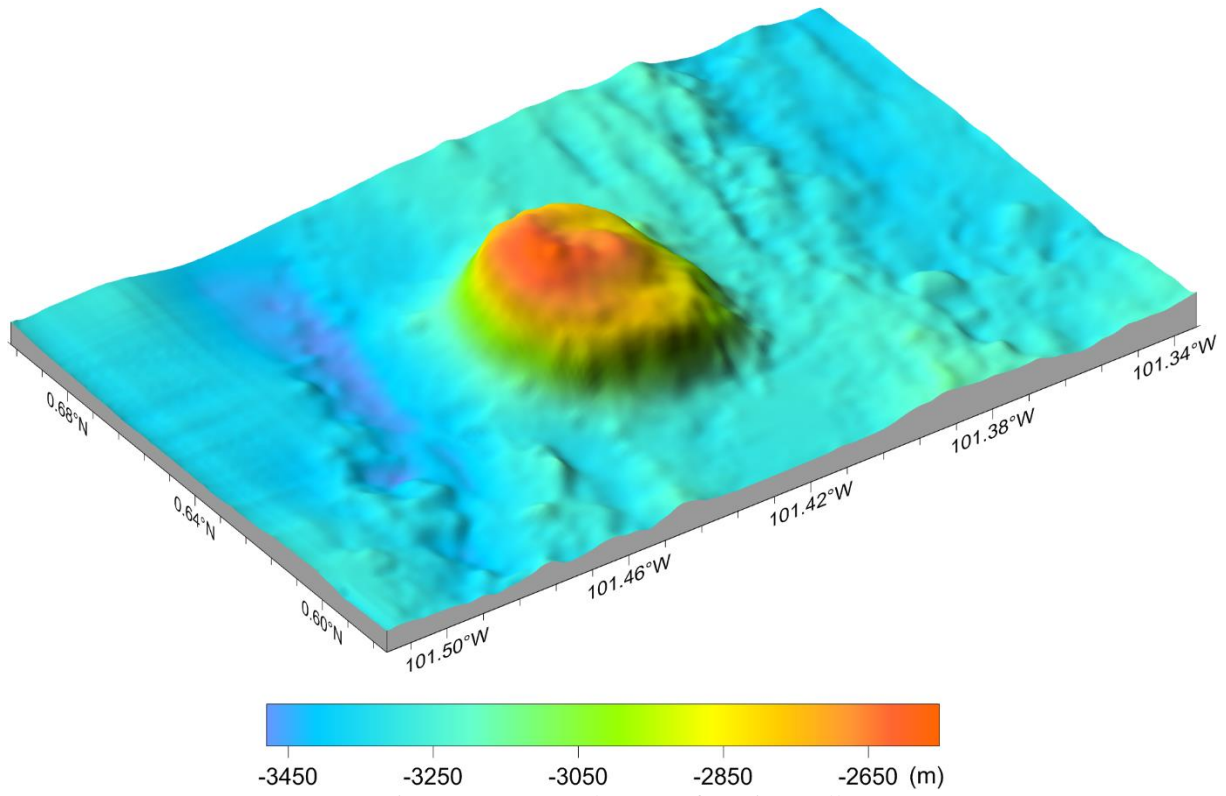


Fig. 4 3-D topography map of Nuoju Knoll

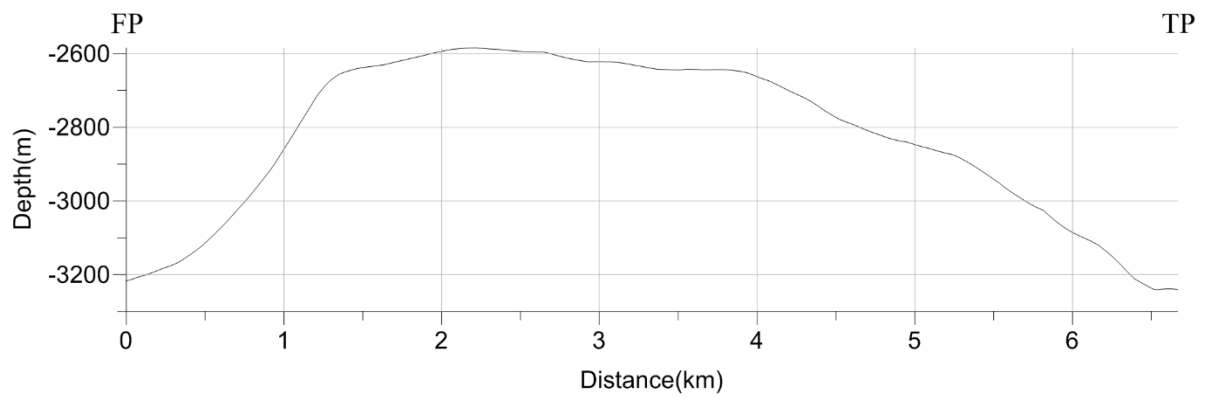
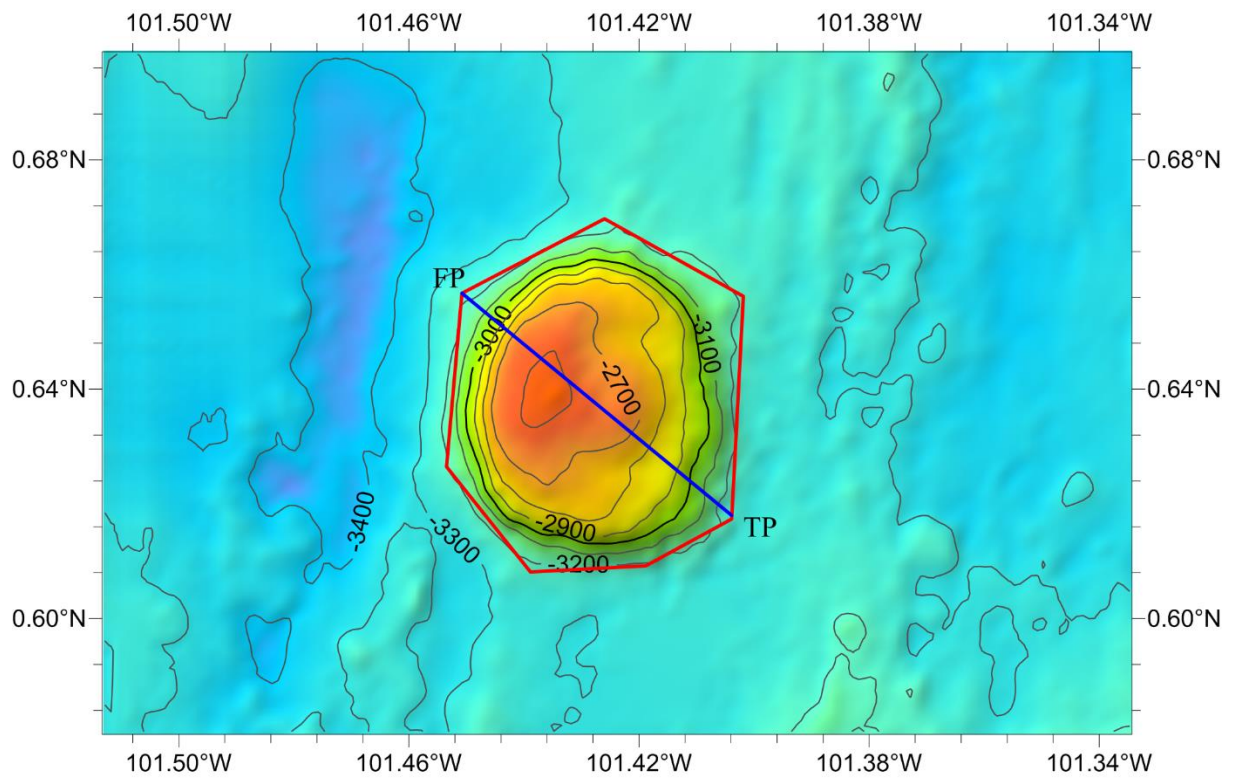


Fig. 5 profile map of Nuoju Knoll