

**UNDERSEA FEATURE NAME PROPOSAL**  
(See IHO-IOC Publication B-6 and NOTE overleaf)

Note: The boxes will expand as you fill the form.

<b>Name Proposed:</b>	Zouyu Ridge	<b>Ocean or Sea:</b>	South Atlantic Ocean
-----------------------	-------------	----------------------	----------------------

<b>Geometry</b> that best defines the feature (Yes/No) :						
Point	Line	Polygon	Multiple points	Multiple lines*	Multiple polygons*	Combination of geometries*
		Yes				

\* Geometry should be clearly distinguished when providing the coordinates below.

	Lat. (e.g. 63°32.6'N)	Long. (e.g. 046°21.3'W)
<b>Coordinates:</b>	13°17.3'S(Top)	14°24.6'W(Top)
	13°33.0'S(Bottom)	14°23.6'W(Bottom)
	13°32.7'S	14°24.5'W
	13°30.3'S	14°24.5'W
	13°27.3'S	14°25.1'W
	13°20.7'S	14°26.2'W
	13°15.1'S	14°26.7'W
	13°10.3'S	14°26.5'W
	13°08.7'S	14°26.1'W
	13°11.7'S	14°24.0'W
	13°15.5'S	14°22.2'W
	13°20.0'S	14°21.0'W
	13°25.5'S	14°20.4'W
	13°31.8'S	14°21.8'W
13°33.0'S	14°23.6'W	

<b>Feature Description:</b>	<b>Maximum Depth:</b>	3070 m	<b>Steepness :</b>	
	<b>Minimum Depth :</b>	2330 m	<b>Shape :</b>	line
	<b>Total Relief :</b>	740 m	<b>Dimension/Size :</b>	46 km * 10 km

<b>Associated Features:</b>	Zouyu Ridge is located in the South Atlantic Ridge, nearly parallel with the central rift valley. The length and width are 46 km and 10 km respectively. The minimum top depth of the ridge is 2330 m and the piedmont depth is 3070 m, which makes the total relief being 740 m.
-----------------------------	---

<b>Chart/Map References:</b>	Shown Named on Map/Chart:	
	Shown Unnamed on Map/Chart:	GEBCO 5.07
	Within Area of Map/Chart:	

<b>Reason for Choice of Name</b> (if a person, state how associated with the feature to be named):	Zouyu comes from a poem named Zhaonan in Shijing·Guofeng. Shijing is a collection of ancient Chinese Poems from 11 <sup>th</sup> century B.C. to 6 <sup>th</sup> century B.C. It is referred to a benevolence beast in ancient Chinese legends. It is used to mean the benevolence policy by the rulers, so the people could rehabilitate very well.
--	--

<b>Discovery Facts:</b>	<b>Discovery Date:</b>	July, 2012
	<b>Discoverer (Individual, Ship):</b>	Chinese R/V Dayang Yihao

<b>Supporting Survey Data, including Track Controls:</b>	Date of Survey:	July, 2012
	Survey Ship:	Chinese R/V Dayang Yihao
	Sounding Equipment:	Multi-beam Echo Sounding System (Seabeam2112.360)
	Type of Navigation:	DGPS
	Estimated Horizontal Accuracy (nm):	≤0.08nm
	Survey Track Spacing:	5 nm
	Supporting material can be submitted as Annex in analog or digital form: see Annex	

<b>Proposer(s):</b>	Name(s):	China Ocean Mineral Resources R&D Association (COMRA)
	Date:	July 1, 2017
	E-mail:	jin@comra.org
	Organization and Address:	Fuxingmenwai Street No.1, Beijing, China China Ocean Mineral Resources R&D Association
	Concurrer (name, e-mail, organization and address):	

<b>Remarks:</b>	<p>The proposal has been reviewed and approved by Sub-Committee on Undersea Feature Names of China Committee on Geographical Names (CCUFN). And the proposal has also been published in "Chinese Gazetteer of Undersea Features on the International Seabed(2016)". No.1, Fuxingmenwai Street, Xicheng District, Beijing, China, 100860 heyunxu@sina.com</p>
-----------------	--

**NOTE :** This form should be forwarded, when completed :

- a) **If the undersea feature is located inside the external limit of the territorial sea :-**  
to your "National Authority for Approval of Undersea Feature Names" (see Publication B-6) or, if this does not exist or is not known, either to the IHO or to the IOC (see addresses below);
- b) **If at least 50 % of the undersea feature is located outside the external limits of the territorial sea :-**  
to the IHO or to the IOC, at the following addresses :

International Hydrographic Organization (IHO) 4, Quai Antoine 1er B.P. 445 MC 98011 MONACO CEDEX Principality of MONACO Fax: +377 93 10 81 40 E-mail: <a href="mailto:info@iho.int">info@iho.int</a> Web: <a href="http://www.iho.int">www.iho.int</a>	Intergovernmental Oceanographic Commission (IOC) UNESCO Place de Fontenoy 75700 PARIS France Fax: +33 1 45 68 58 12 E-mail: <a href="mailto:info@unesco.org">info@unesco.org</a> Web: <a href="http://ioc-unesco.org/">http://ioc-unesco.org/</a>
---	--

# ANNEX

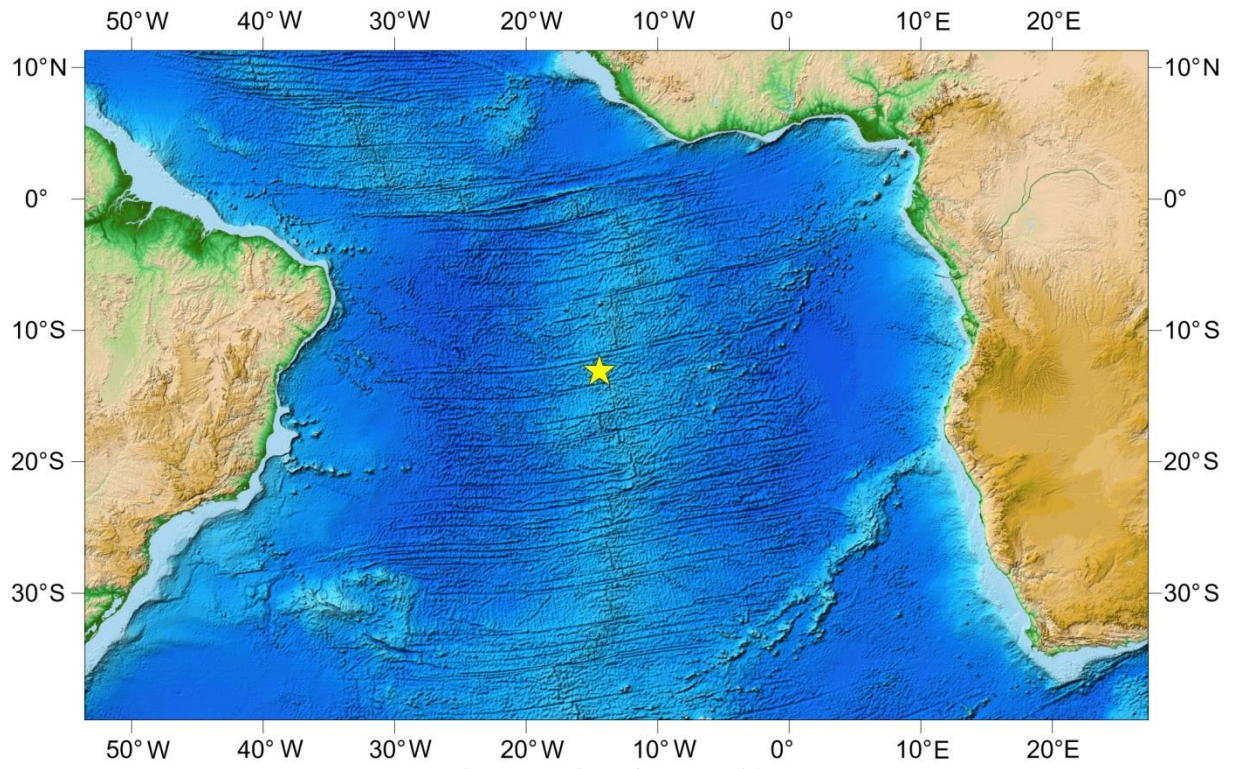


Fig. 1 Location of Zouyu Ridge

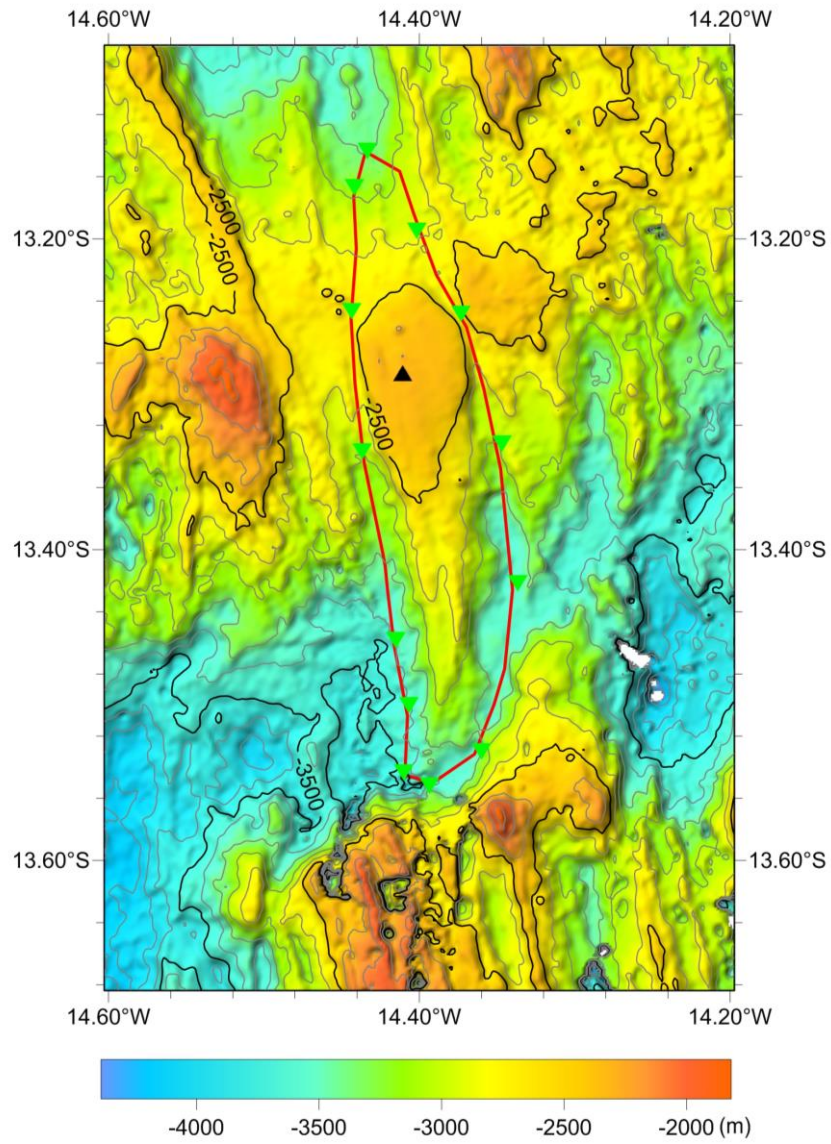


Fig. 2 Bathymetric map of Zouyu Ridge (Contours are in 200 m)

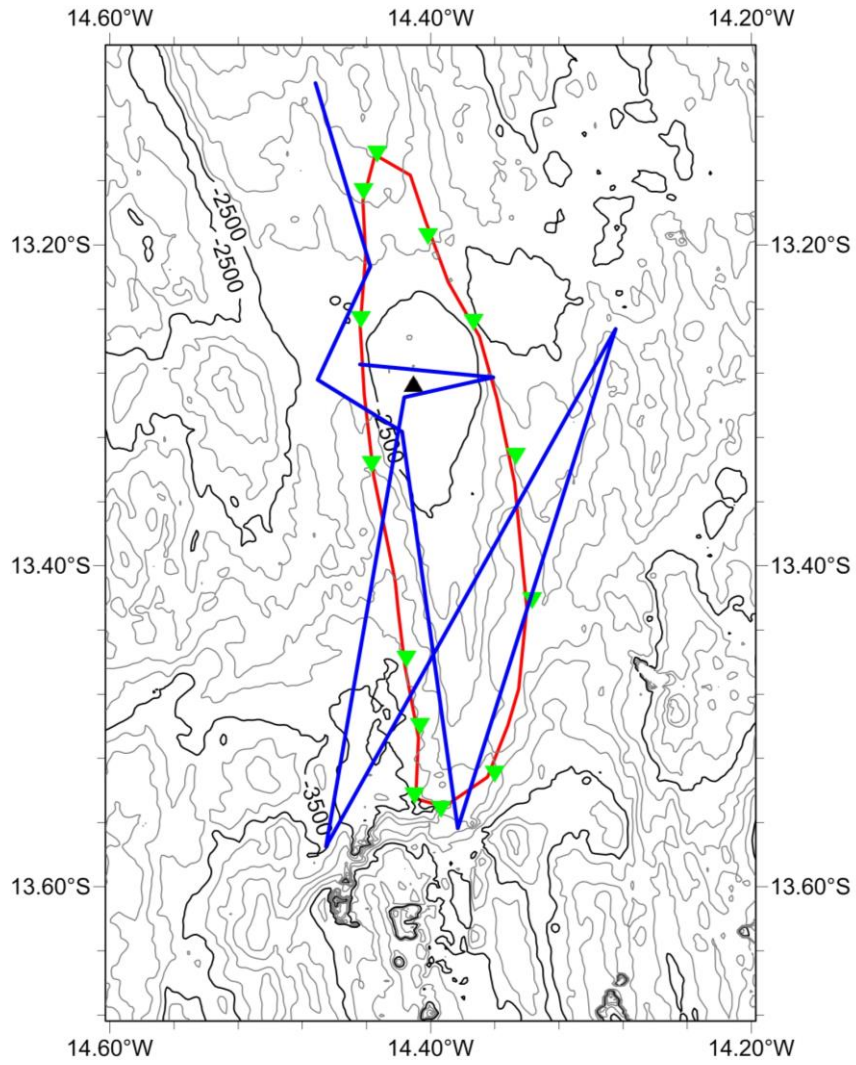


Fig. 3 Bathymetric and survey line map of Zouyu Ridge (Contours are in 200 m, blue ones are survey lines)

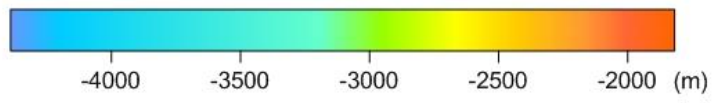
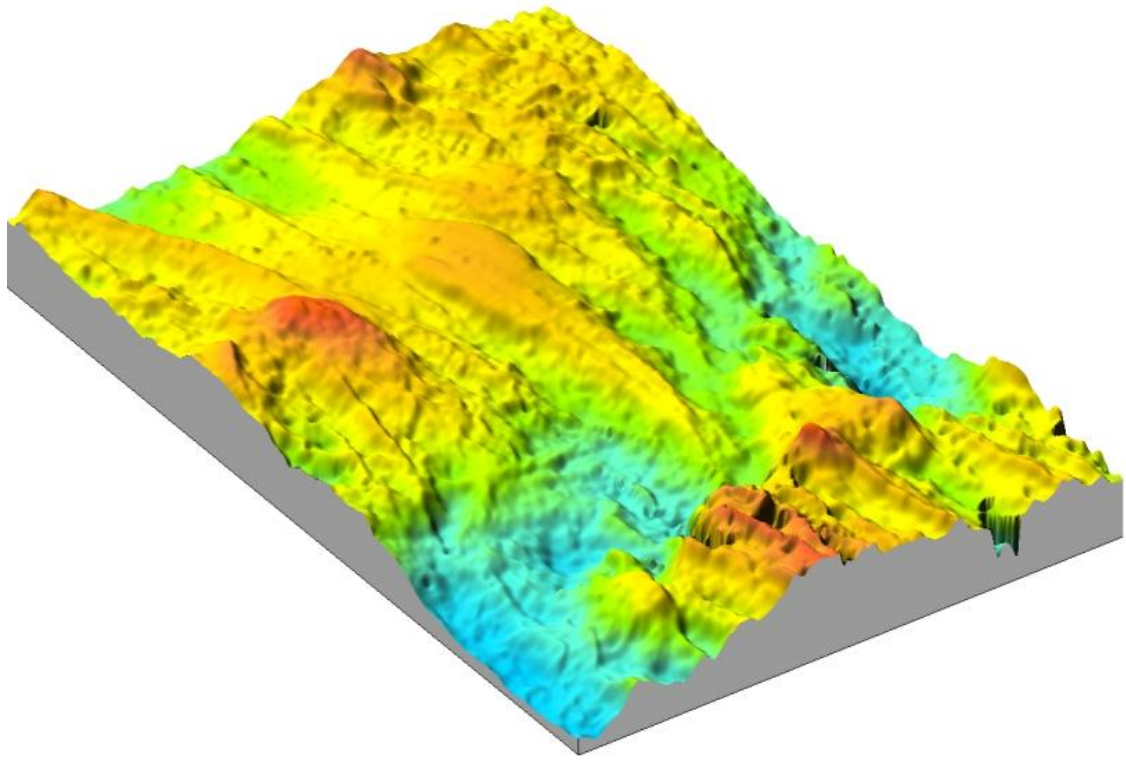


Fig. 4 3-D topography map of Zouyu Ridge

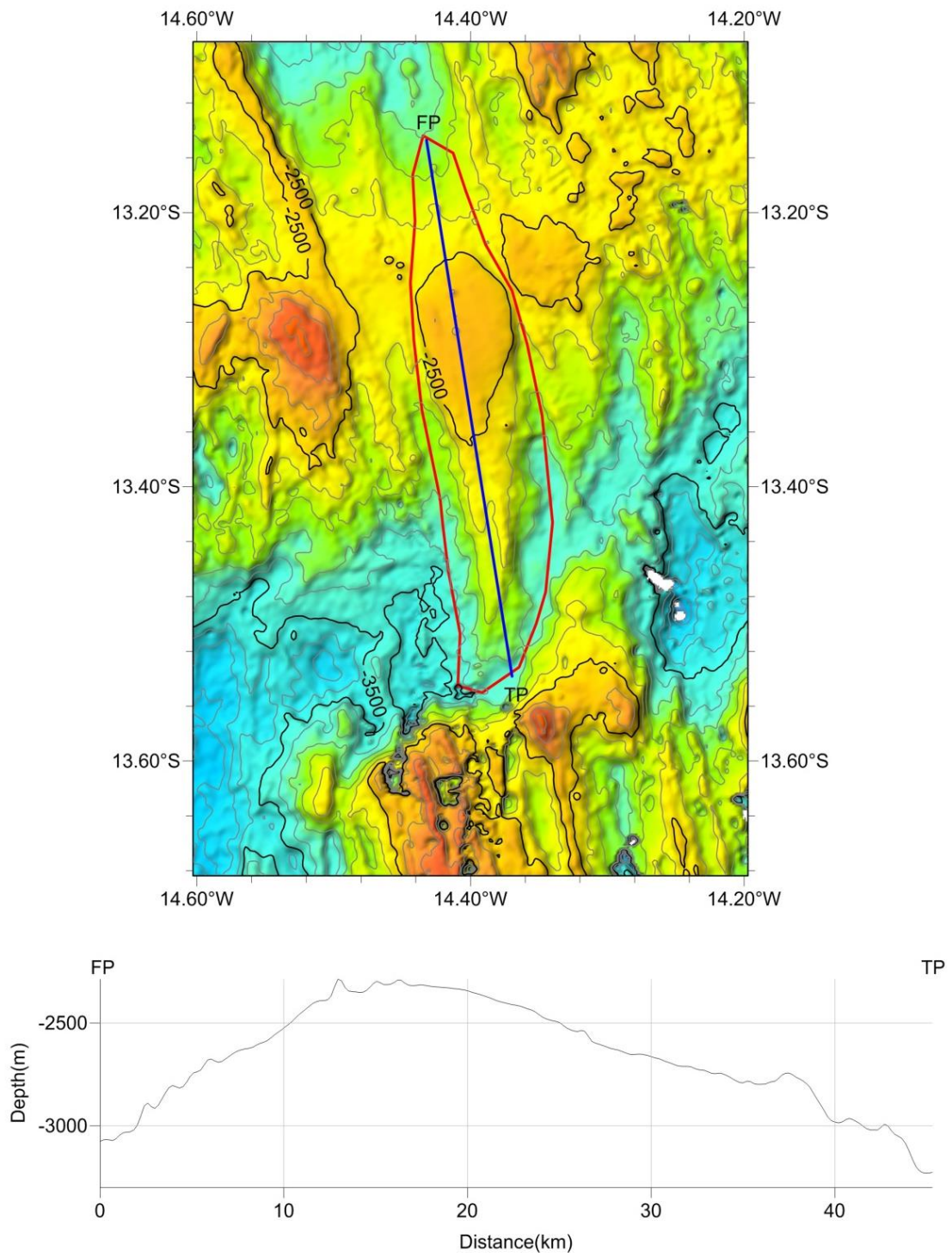


Fig. 5 profile map of Zouyu Ridge