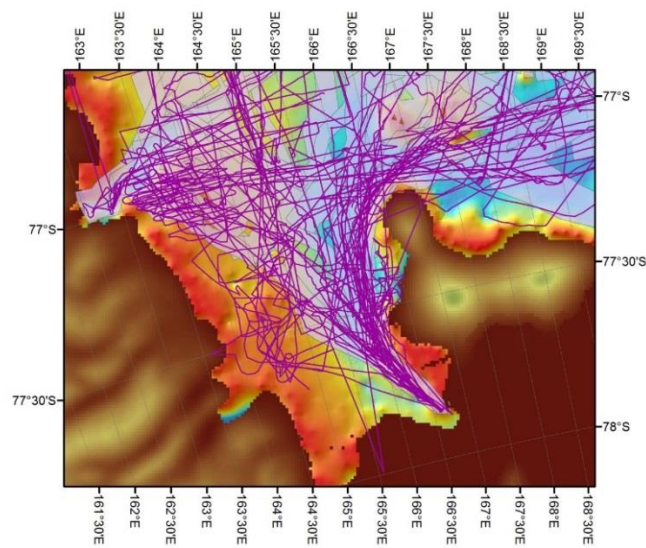
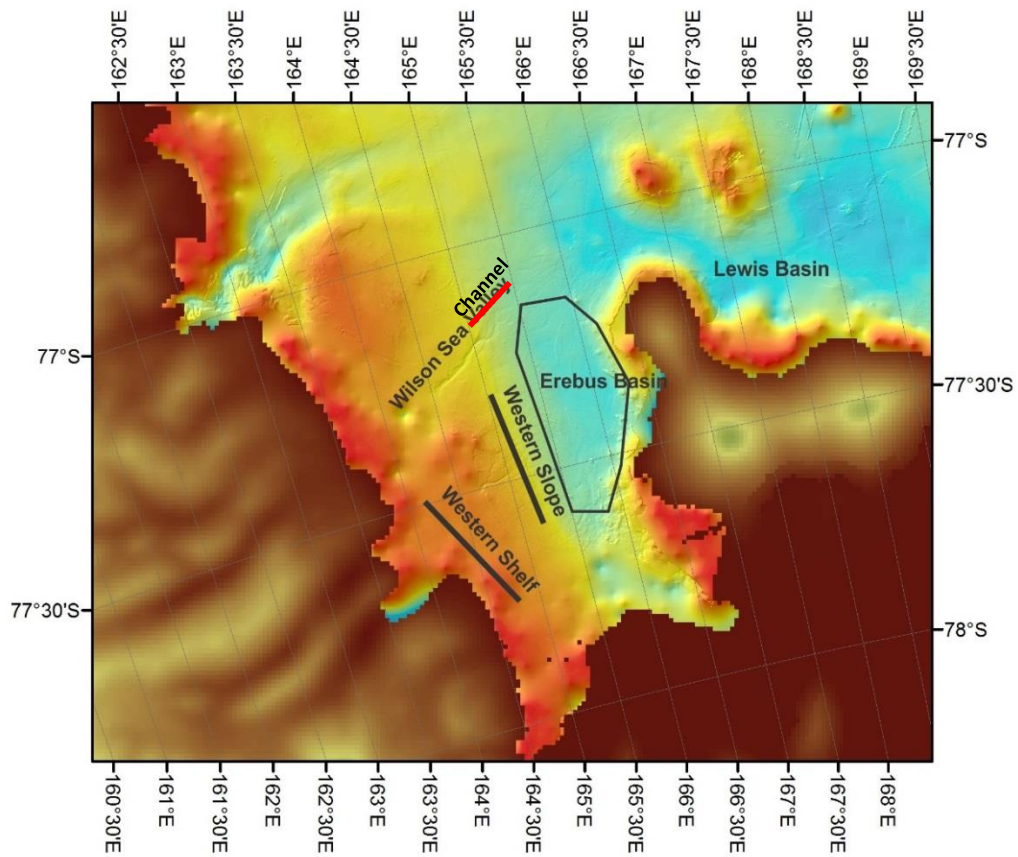


# NZ Geographic Board's fast track names for SCUFN 2017: bathymetry and data coverage

Modern Antarctic bathymetry and data coverage of the same area as the McMurdo Sound Chart©, Pyne et al., 1985 (swath data in pink, reliable single-beam data in purple).



Modern Antarctic bathymetry and data coverage of the same area as the Balleny Chart©, Dawson, 1969 (swath data in pink, reliable single-beam data in purple).

