



# Republic of Palau TERRITORY AND BOUNDARY

## Task Force

Authorized by Executive Order No. 340 dated June, 17 2013

August 14, 2017

Dear Sir,

The Republic of Palau kindly submits several proposals for the naming of undersea features to be considered at SCUFN 30. Your consideration and support of our proposals is highly appreciated.

The proposed undersea feature names relate to the features in the Palau-Kyushu Ridge (also known as the Kyushu-Palau Ridge). In total, the Republic of Palau is submitting seventeen proposals. All undersea feature names are relevant to Palau’s geography, following the primary naming rule written in “Standardization of Undersea Feature Names”, Publication B-6.

The Republic of Palau comprises about 350 islands and islets. Most of these surmount the Palau-Kyushu Ridge. The largest island is Babeldaob, and the northernmost one is Kayangel (**Fig. 1**).

The 17 proposals include 2 RIDGES, 11 SEAMOUNTS, and 4 BASINS (**Fig. 2**). The Japanese government generously provided parts of the data (**Fig. 3**). The remaining data are from the scientific research cruises available on the Japan Agency for Marine-Earth Science and Technology (JAMSTEC)’s database at <http://www.godac.jamstec.go.jp/darwin/e> (**Fig. 3**).

**Table 1** list the source and relevant information of multi-beam bathymetric data used for Palau’s undersea feature name proposals.

**Table 1. Source and relevant information of primary multi-beam bathymetric data used for Palau's undersea feature name proposals**

Cruise ID	Embark	Arrival	Days	Ship	Navigation Method	Navigation Accuracy	Geodetic Datum	Muluti-beam system	Data source
FY2007_CSS4	2007/1/6/6	2007/6/25	20	S/V Shoyo	GPS without SA	26 m	WGS84	Seabeam 2112	HODJ
Y93-03	1993/10/16	1993/11/18	34	R/V Yokosuka	GPS with SA	100 m	WGS84	HS-10	JAMSTEC
Y95-06_Leg1	1995/9/5	1995/9/16	12	R/V Yokosuka	GPS with SA	100 m	WGS84	HS-10	JAMSTEC
Y95-06_Leg2	1995/9/18	1995/10/3	16	R/V Yokosuka	GPS with SA	100 m	WGS84	HS-10	JAMSTEC
Y96-12	1996/10/26	1996/11/13	19	R/V Yokosuka	GPS with SA	100 m	WGS84	HS-10	JAMSTEC

HODJ = Hydrographic and Oceanographic Department of Japan

JAMSTEC = Japan Agency for Marine-Earth Science and Technology

The 2 RIDGES are named after Babeldaob Island, the 11 SEAMOUNTS are named using the old state or village names located in Kayangel and Babeldaob Islands, and the 4 BASINS are named after the saline lakes (i.e, marine lakes) located in the southern lagoon of Koror, which is commonly referred to as the Rock Islands.

### Task Force Officers

#### **Chairman**

Rebluud Kesolei

#### **Members**

Gustav Aitaro  
Keobel Sakuma  
Charlene Mersai  
David K Idip Jr.  
Takamatsu Emesiochel

#### **Advisor**

Jerrold E. Knight



**Republic of Palau**  
**TERRITORY AND BOUNDARY**  
**Task Force**

Authorized by Executive Order No. 340 dated June, 17 2013

Among the 11 SEAMOUNTS, one is named after the old state/village name of the Kayangel Island, Ngedebuul. The remaining 10 SEAMOUNTS are named after the old state/village names of the states in Babeldaob Island (**Fig. 4**). The configuration of the proposed SEAMOUNTS follows the actual configuration of the states in the Babeldaob Island (**Fig. 4**).

The “Rock Islands”, Koror State, are a World Heritage Site since 2012. The proposed 4 BASINS are named after the saline lakes there (**Fig. 5**), and the configuration of the proposed BASINS follows the actual configuration of the saline lakes.

**Task Force Officers**

**Chairman**

Rebluud Kesolei

**Members**

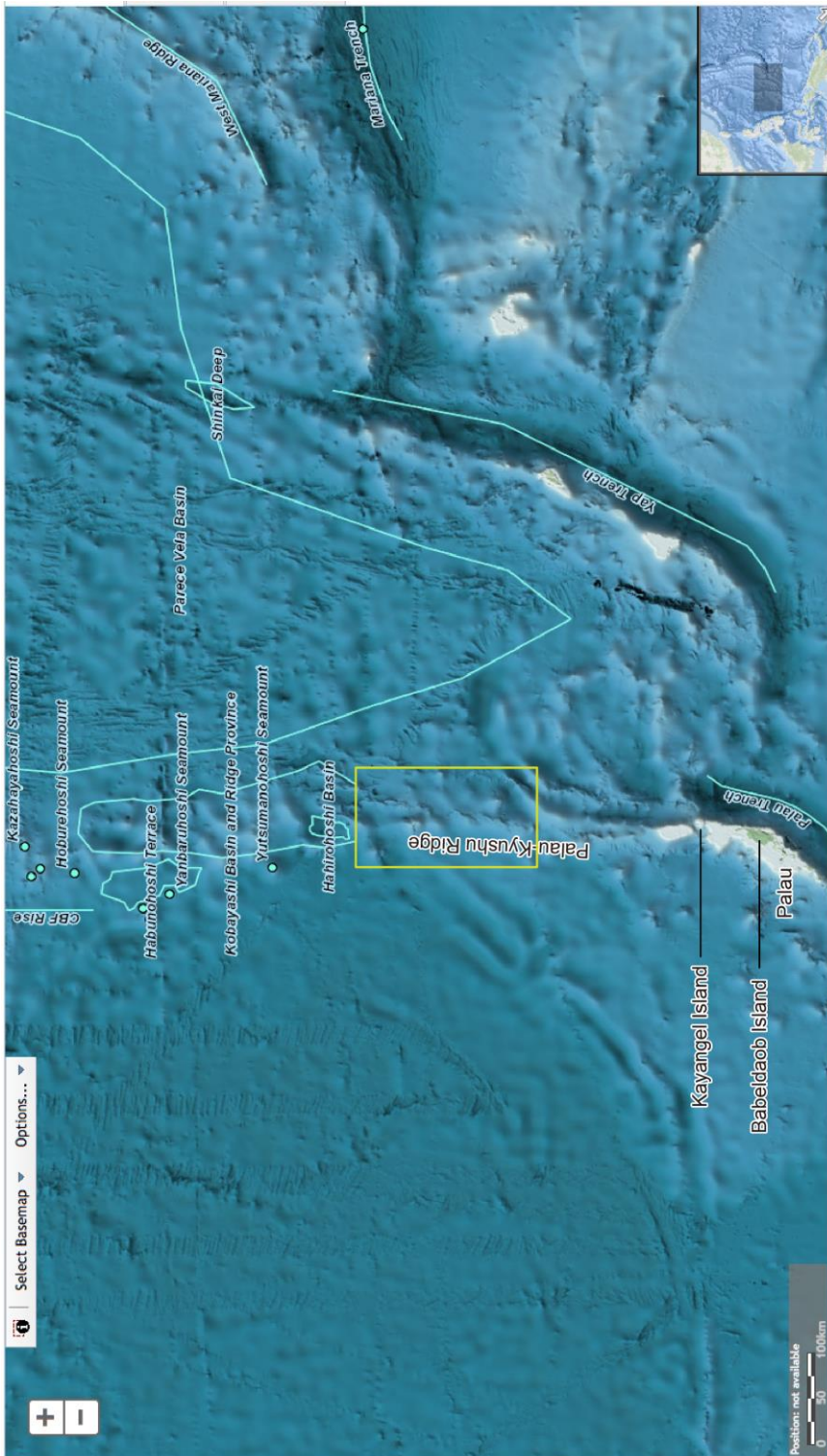
Gustav Aitaro  
Keobel Sakuma  
Charlene Mersai  
David K Idip Jr.  
Takamatsu Emesiochel

**Advisor**

Jerrold E. Knight

# Republic of Palau TERRITORY AND BOUNDARY Task Force

Authorized by Executive Order No. 340 dated June, 17 2013



## Task Force Officers

**Chairman**  
Rebluud Kesolei

**Members**  
Gustav Aitaro  
Keobel Sakuma  
Charlene Mersai  
David K Idip Jr.  
Takamatsu Emesiochel

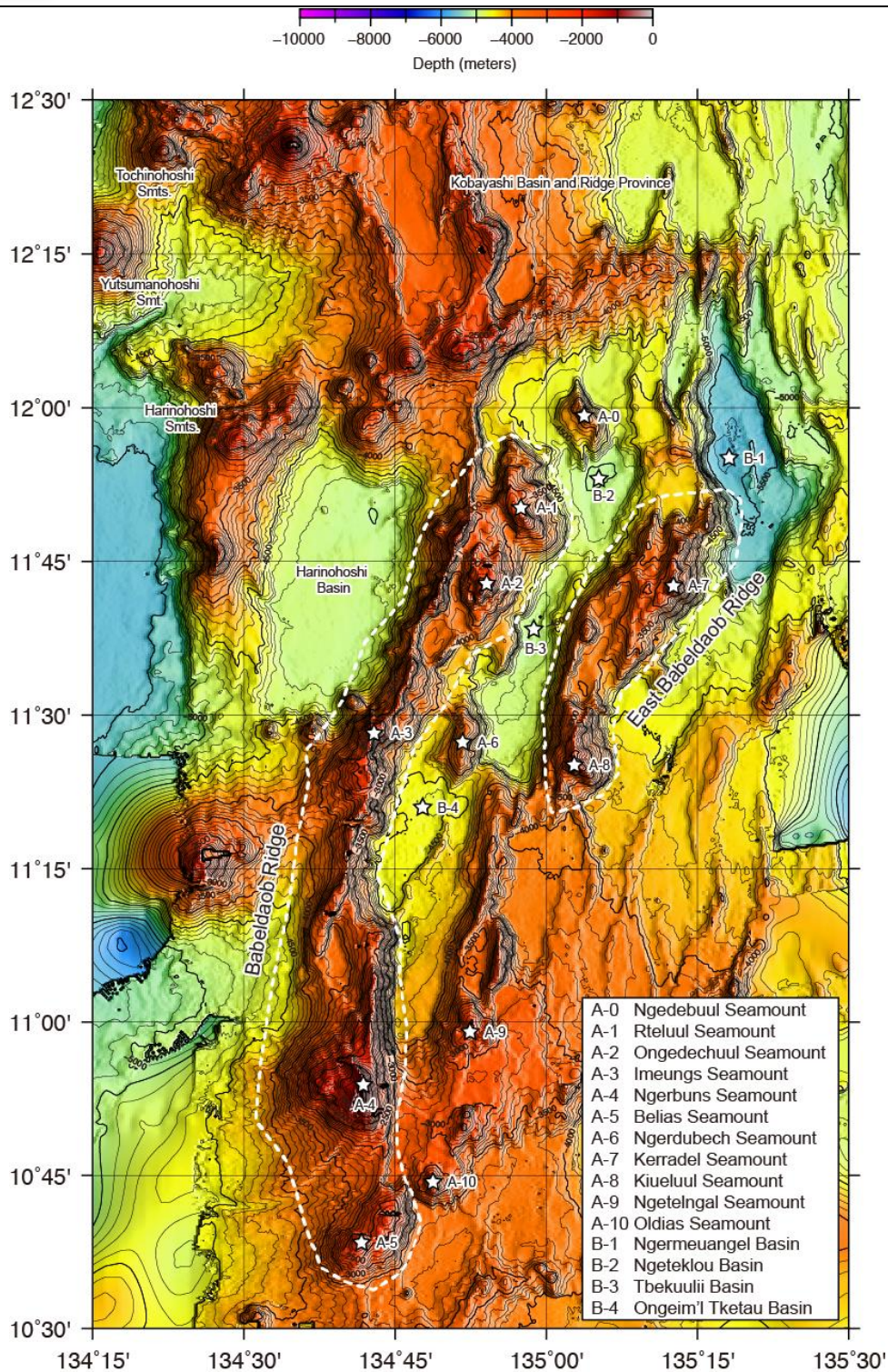
**Advisor**  
Jerrold E. Knight

Fig. 1. Index map showing the location of the Republic of Palau. The yellow box indicates the approximate location of Figs. 2 and 3.



# Republic of Palau TERRITORY AND BOUNDARY Task Force

Authorized by Executive Order No. 340 dated June, 17 2013



## Task Force Officers

**Chairman**  
Rebluud Kesolei

**Members**  
Gustav Aitaro  
Keobel Sakuma  
Charlene Mersai  
David K Idip Jr.  
Takamatsu Emesiochel

**Advisor**  
Jerrold E. Knight

Fig. 2. Bathymetric map showing the undersea features with proposed names by the Republic of Palau. Contours intervals are 100 m.

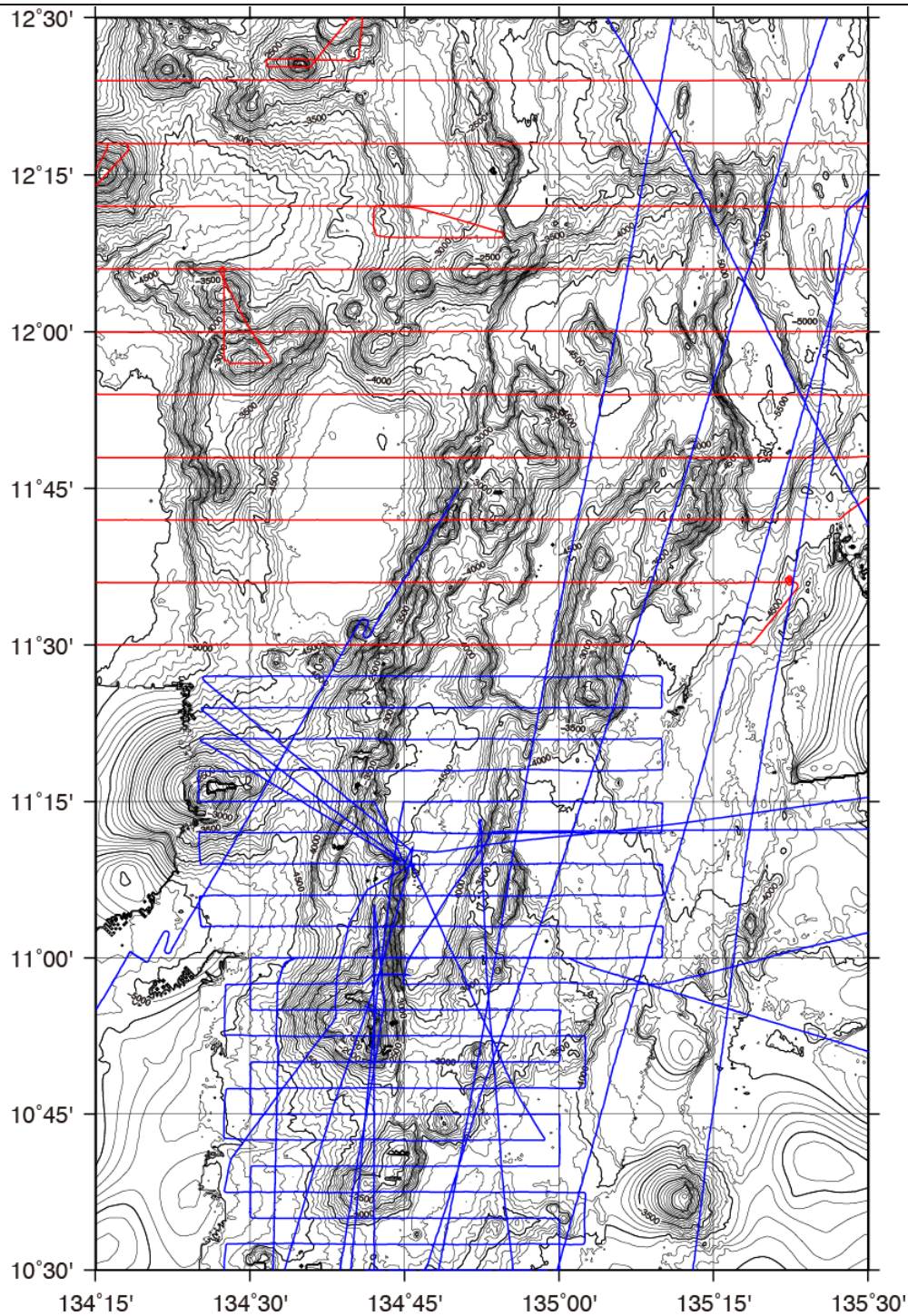




# Republic of Palau TERRITORY AND BOUNDARY

## Task Force

Authorized by Executive Order No. 340 dated June, 17 2013



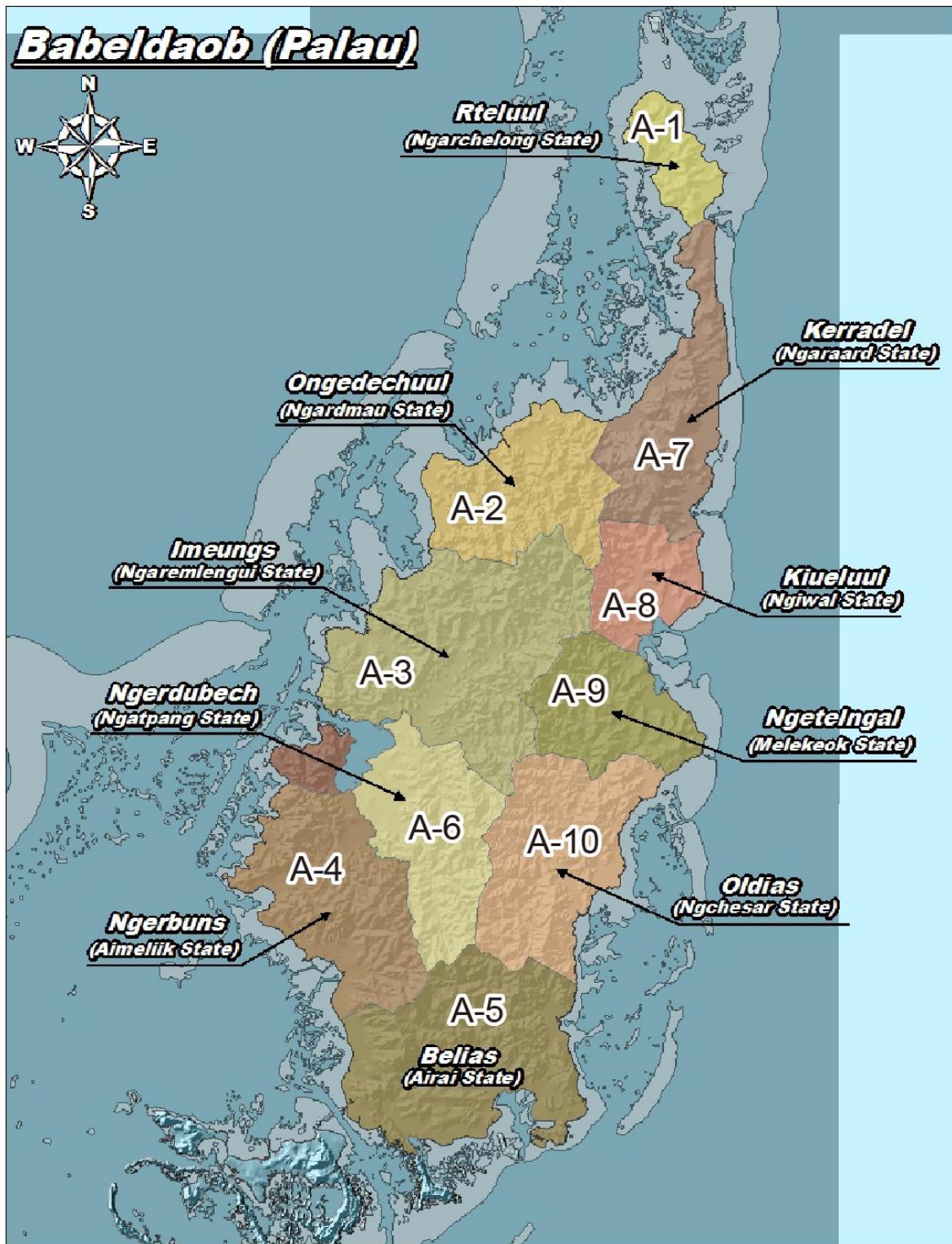
### Task Force Officers

**Chairman**  
Rebluud Kesolei

**Members**  
Gustav Aitaro  
Keobel Sakuma  
Charlene Mersai  
David K Idip Jr.  
Takamatsu Emesiochel

**Advisor**  
Jerrold E. Knight

Fig. 3. Bathymetric map showing the cruise track lines used to reconstruct bathymetry data. Contour intervals are 100 m. Red = cruise track line for the HODJ cruises. Blue = cruise track lines for the JAMSTEC cruises.



**Task Force Officers**

**Chairman**  
Rebluud Kesolei

**Members**  
Gustav Aitaro  
Keobel Sakuma  
Charlene Mersai  
David K Idip Jr.  
Takamatsu Emesiochel

**Advisor**  
Jerrold E. Knight

Fig. 4. Map showing the old state names located in Babeldaob Island. The current state names are indicated in parenthesis. A-1 to A-10 refer to the proposed seamount names..



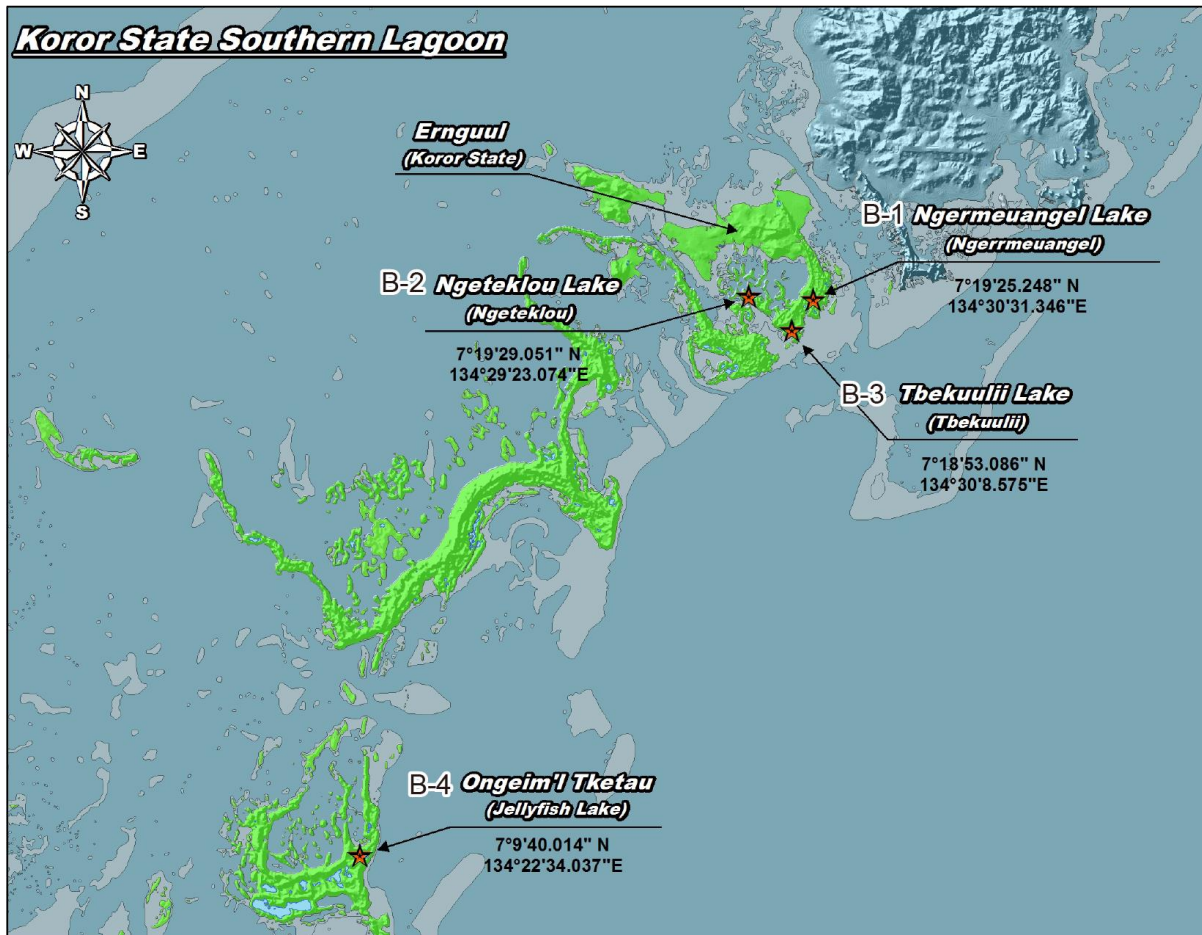


Fig. 5. Map showing the marine lakes in the Rock Islands. B-1 to B-4 refer to the proposed basin names.

**Task Force Officers**

**Chairman**  
Rebluud Kesolei

**Members**  
Gustav Aitaro  
Keobel Sakuma  
Charlene Mersai  
David K Idip Jr.  
Takamatsu Emesiochel

**Advisor**  
Jerrold E. Knight