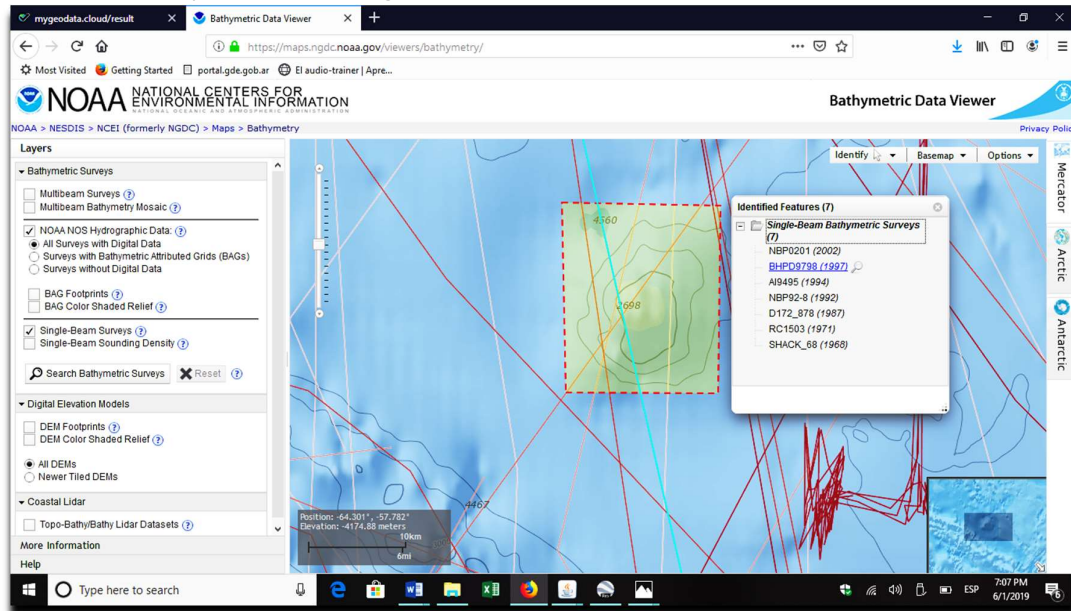
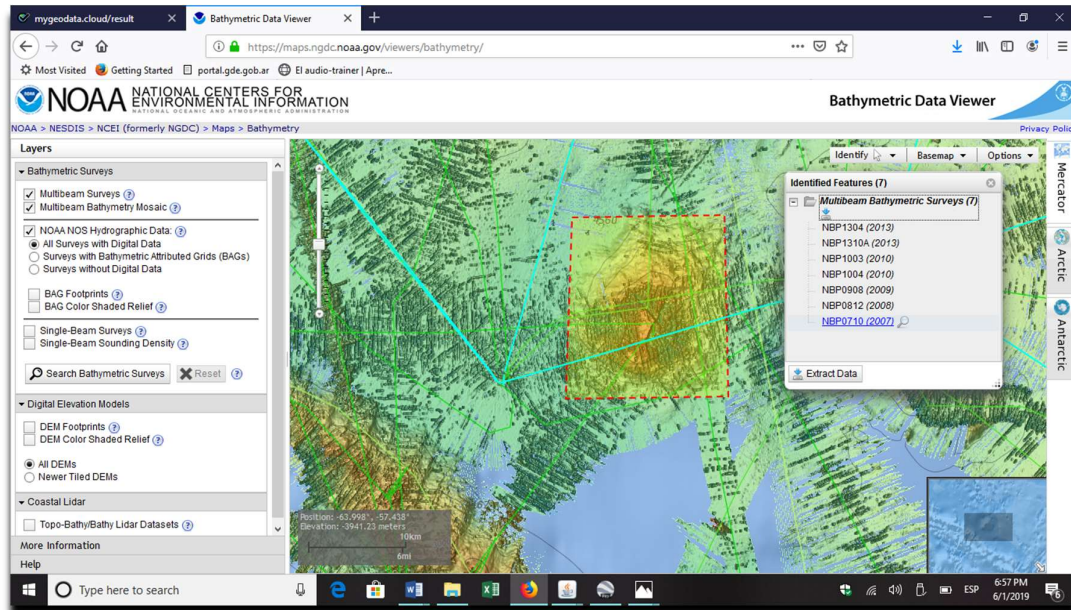


ANNEX TO THE USHUAIA Seamount proposal

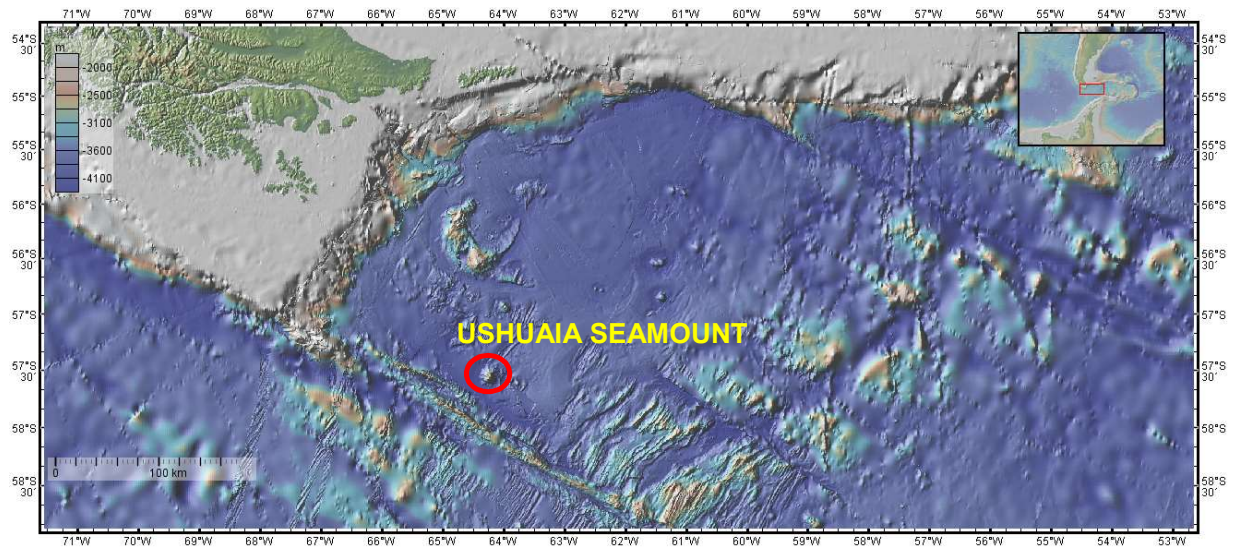
1. Historical bathymetric data: singlebeam data from GEBCO DBDC, B-4 Publication



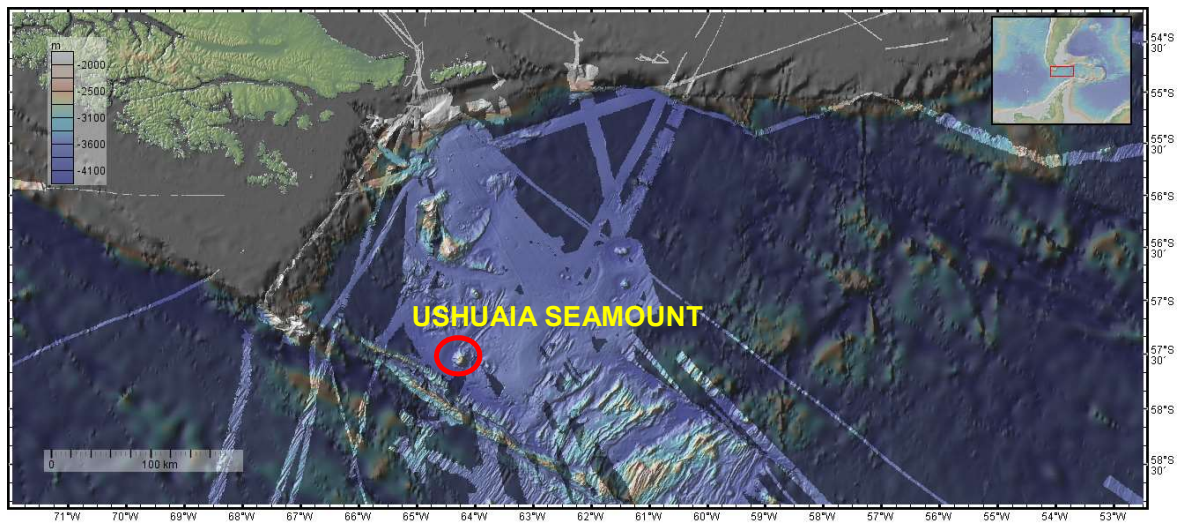
2. Bathymetric data used for mapping: multibeam data from the GEBCO DBDC, B-4 Publication.



3. General Map Location.

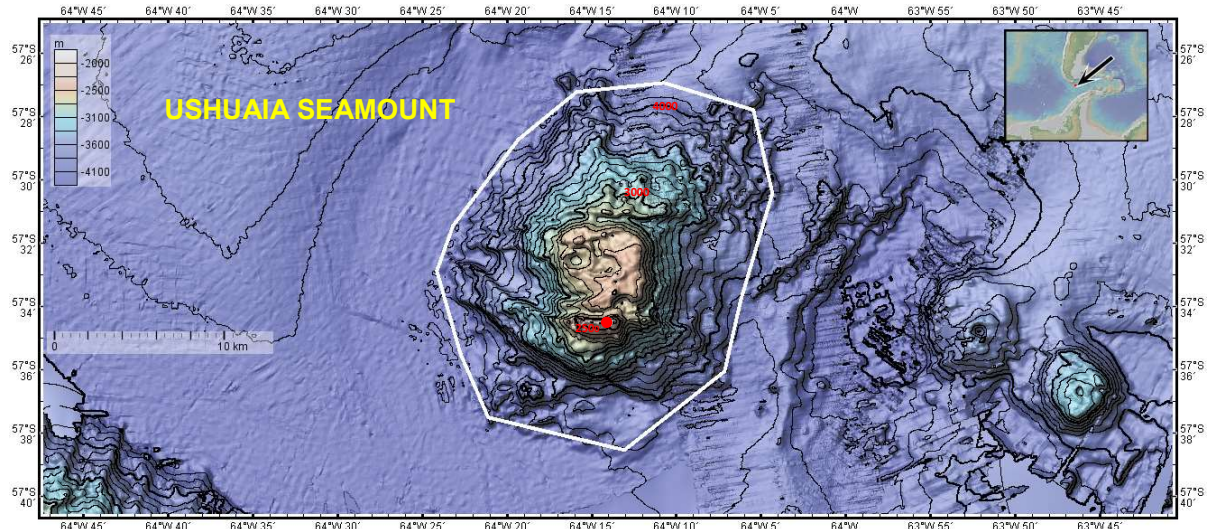


4. Multibeam converge map.

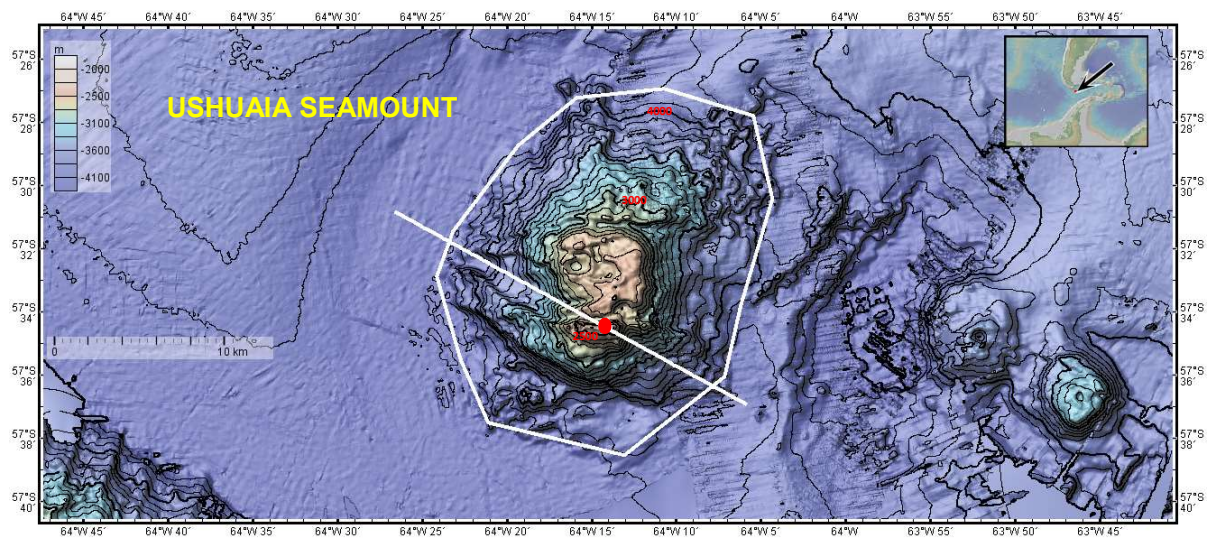
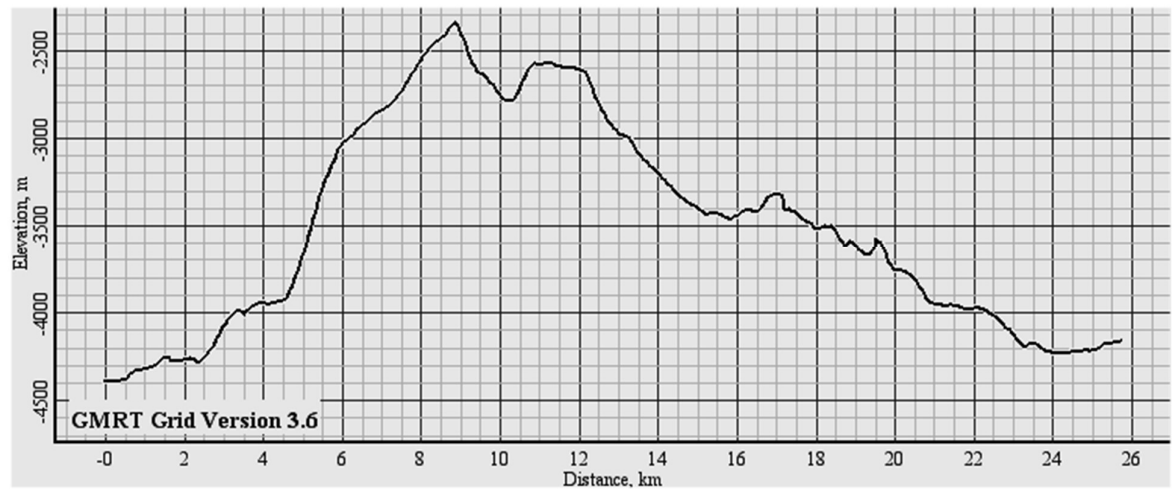
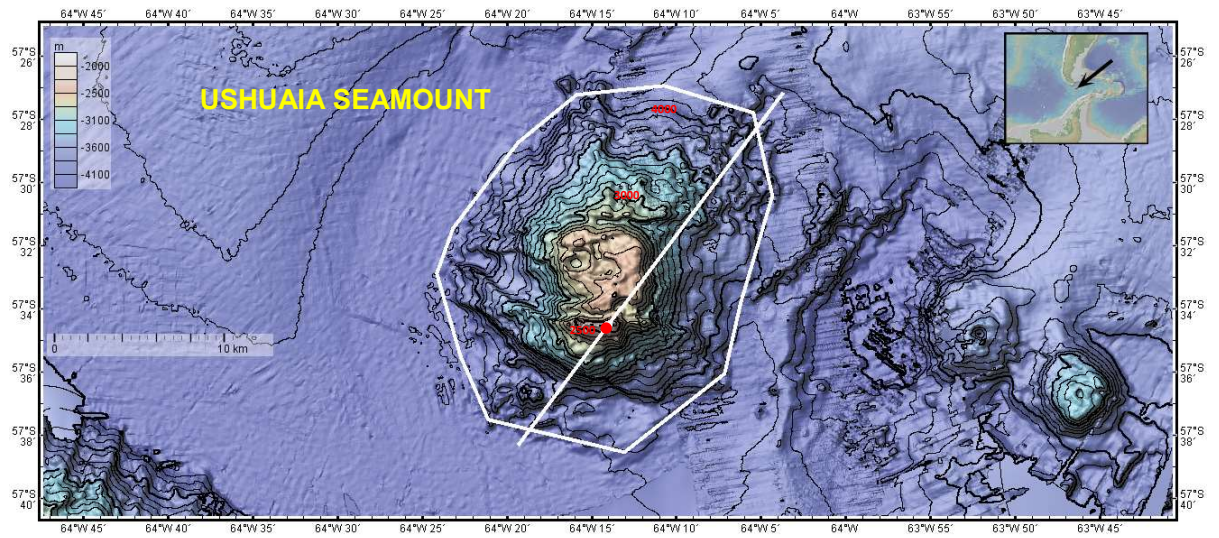


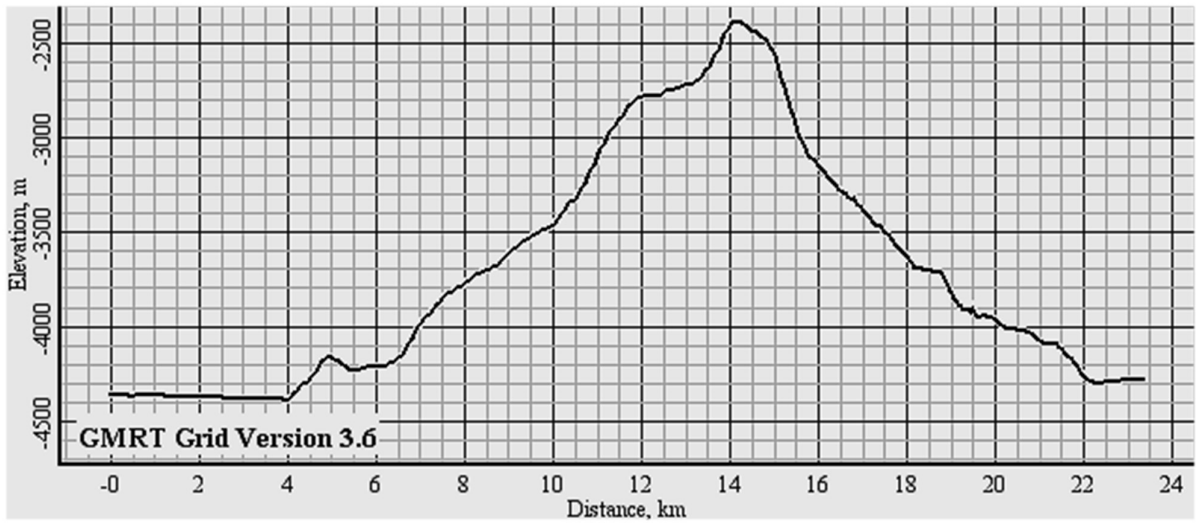
Figures made with GeoMapApp (www.geomapapp.org) / CC BY (Ryan et al., 2009).

5. Bathymetric map

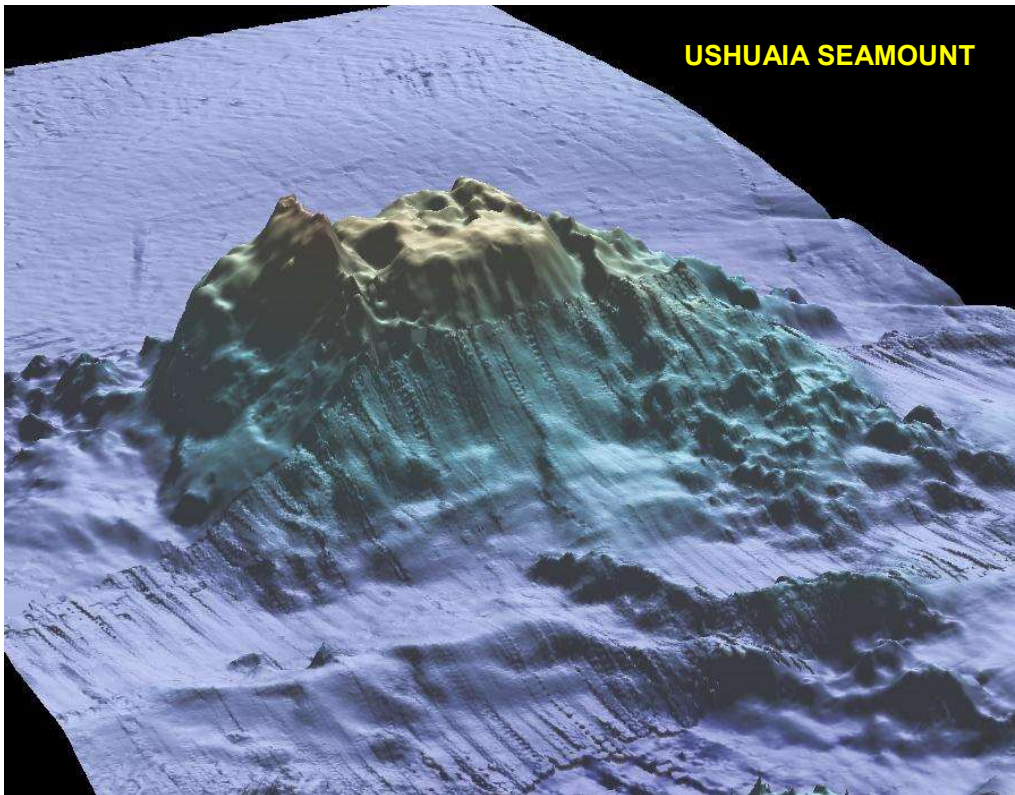


6. Bathymetric profiles.





7. 3D images. Figures made with GeoMapApp (www.geomapapp.org) / CC BY (Ryan et al., 2009).



USHUAIA SEAMOUNT

