

**UNDERSEA FEATURE NAME PROPOSAL**

(See **NOTE** overleaf)

Note: The boxes will expand as you fill the form.

<b>Name Proposed:</b>	Zuofu Seamount	<b>Ocean or Sea:</b>	West Pacific Ocean
-----------------------	----------------	----------------------	--------------------

Geometry that best defines the feature (Yes/no):						
Point	Line	Polygon	Multiple points	Multiple lines*	Multiple polygons*	Combination of geometries*
		Yes				

\* Geometry should be clearly distinguished when providing the coordinates below.

Coordinates:	Lat. (e.g. 63°32.6'N)	Long. (e.g. 046°21.3'W)
		13°23.0'N (Summit)
	13°25.1'N (Bottom)	131°21.7'E (Bottom)
	13°24.9'N	131°24.0'E
	13°24.4'N	131°24.9'E
	13°22.9'N	131°25.8'E
	13°22.4'N	131°26.3'E
	13°21.0'N	131°26.9'E
	13°19.7'N	131°28.3'E
	13°19.5'N	131°28.3'E
	13°19.7'N	131°26.1'E
	13°19.5'N	131°25.5'E
	13°19.3'N	131°25.5'E
	13°18.9'N	131°26.1'E
	13°18.6'N	131°25.4'E
	13°18.8'N	131°23.4'E
	13°18.7'N	131°22.5'E
	13°19.2'N	131°22.2'E
	13°19.4'N	131°21.7'E
	13°18.8'N	131°21.0'E
	13°18.6'N	131°20.4'E
	13°19.0'N	131°19.8'E
	13°19.4'N	131°18.1'E
	13°20.9'N	131°17.1'E
	13°21.9'N	131°17.1'E
	13°22.6'N	131°17.6'E
	13°22.9'N	131°18.3'E
	13°23.8'N	131°18.5'E
	13°24.1'N	131°19.7'E

	13°25.1'N (Bottom)	131°21.7'E (Bottom)
--	--------------------	---------------------

<b>Feature description:</b>	Maximum Depth:	6580 m	Steepness:	
	Minimum Depth:	5120 m	Shape:	polygon
	Total Relief:	1460 m	Dimension/Size:	12 km × 20 km

<b>Associated Features:</b>	This seamount is located about 169 km southwest to the Lichun Seamount. It has a nearly elliptical overlook plane triangle.
-----------------------------	---

<b>Chart/Map References:</b>	Shown Named on Chart/Map	
	Shown Unnamed on Chart/Map	GEBCO 5.07
	Within Area of Chart/Map	

<b>Reason for Choice of Name</b> (if a person, state how associated with the feature to be named):	We plan to name six features near to each other after Tiankui, Tianyue, Zuofu, Youbi, Wenchang and Wenqu, the six auspicious stars in ancient Chinese astrology. They are called “Six Lucky Stars”. “Zuofu” star symbolizes good luck to male. Male with the blessing of the star is loyal, kind and has strong executive power. So we name the seamount after Zuofu.
---	---

<b>Discovery Facts:</b>	Discovery Date:	June 2017
	Discoverer(individual, ship):	R/V Xiang Yang Hong 06

<b>Supporting Survey data, including Track Controls:</b>	Date of survey:	June 2017
	Survey ship:	R/V Xiang Yang Hong 06
	Sounding Equipment:	EM122
	Type of navigation:	StarFire 3050M
	Estimated Horizontal Accuracy:	≤0.08 nm
	Distance between survey lines:	10 km
	Supporting material can be submitted as annex in analog or digital form.	

<b>Proposer(s):</b>	Name(s):	Second Institute of Oceanography, MNR, China
	Date :	25 May 2019
	E-mail:	zywu@vip.163.com
	Organization and address:	Second Institute of Oceanography, No.36 Baochubei Road, Hangzhou China 310012
	Concurrer (name, organization, address):	Wuziyin, Zhaodineng, Lishoujun, Dingweifeng, Zhoujieqiong Second Institute of Oceanography

<b>Remark :</b>	This proposal has been reviewed and approved by China Subcommittee on
-----------------	---

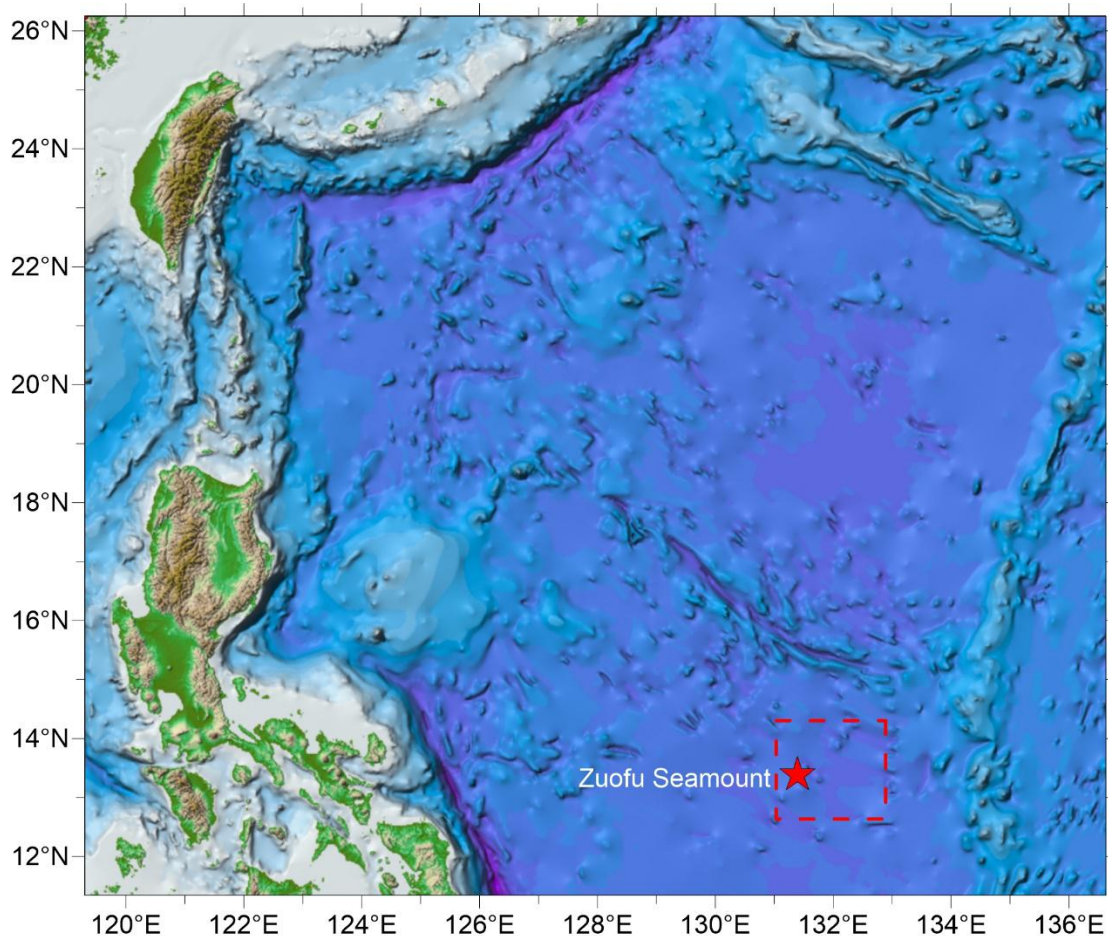
Undersea Feature Names (CCUFN).  
No.64 Fuchengmennei Street, Xicheng District, Beijing, China, 100812  
[heyunxu@sina.com](mailto:heyunxu@sina.com)

**Note:** this form should be forwarded, when completed:

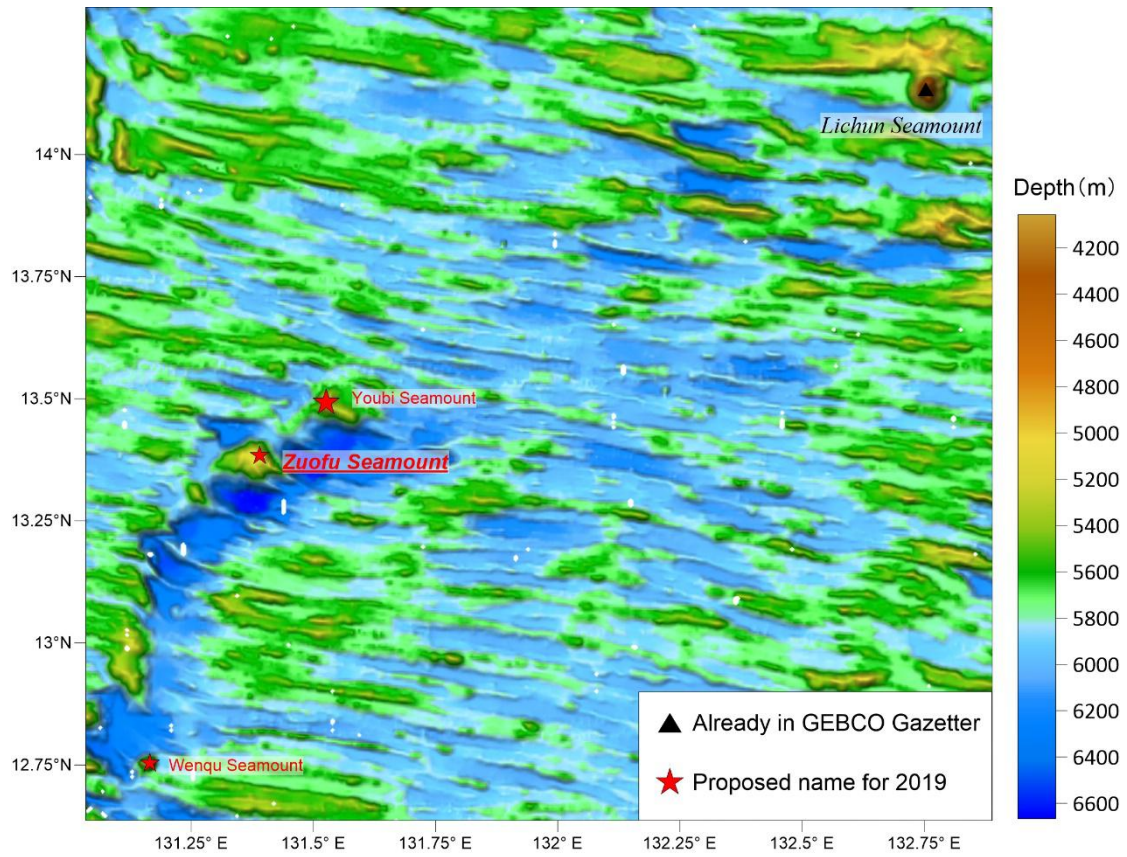
- a) **If the undersea feature is located inside the external limit of the territorial sea:** to your “National Authority for Approval of Undersea Feature Names”(see page 2-9) or, if this does exist or is not known, either to the IHB or to the IOC (see address below):
- b) **If at least 50% of the undersea feature is located outside the external limits of the territorial sea:** to the IHB or to the IOC, at the following address:

International Hydrographic Bureau (IHB) 4, Quai Antoine 1er B.P. 445 MC 98011 MONACO CEDEX <u>Principality of MONACO</u> Fax: +377 93 10 81 40 E-mail: <a href="mailto:info@ihb.mc">info@ihb.mc</a>	Intergovernmental Oceanographic Commission (IOC) UNESCO Place de Fontenoy 75700 PARIS France Fax: +33 1 45 68 58 12 E-mail: <a href="mailto:info@unesco.org">info@unesco.org</a>
---	--

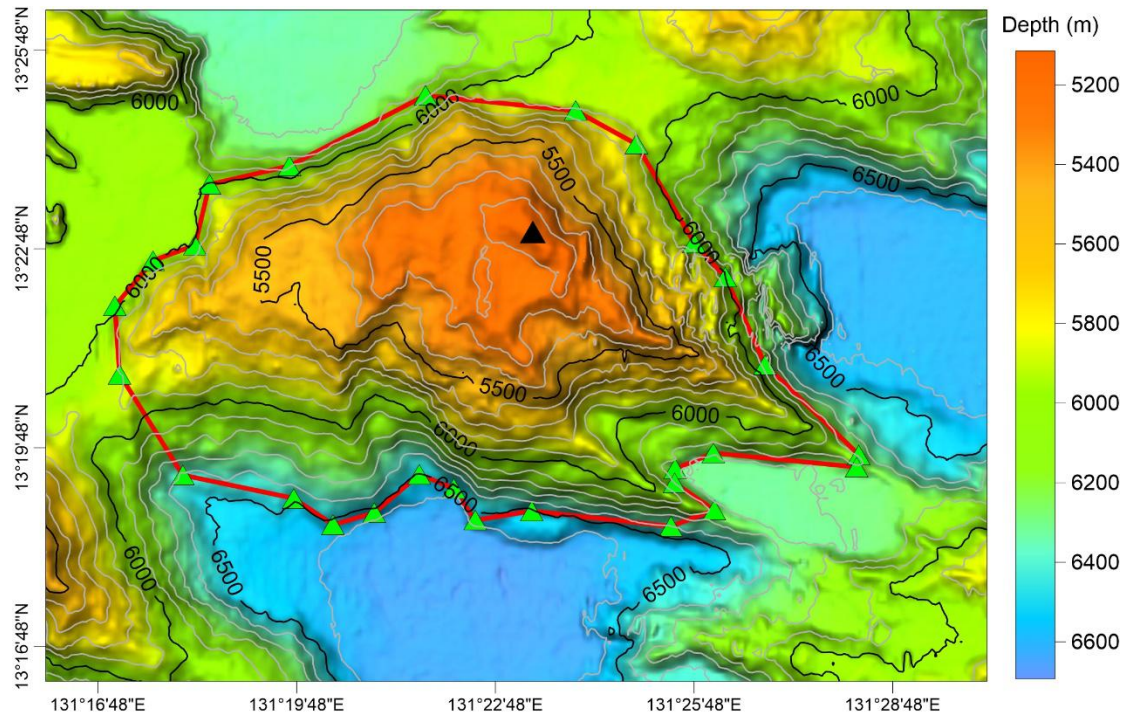
## Figures



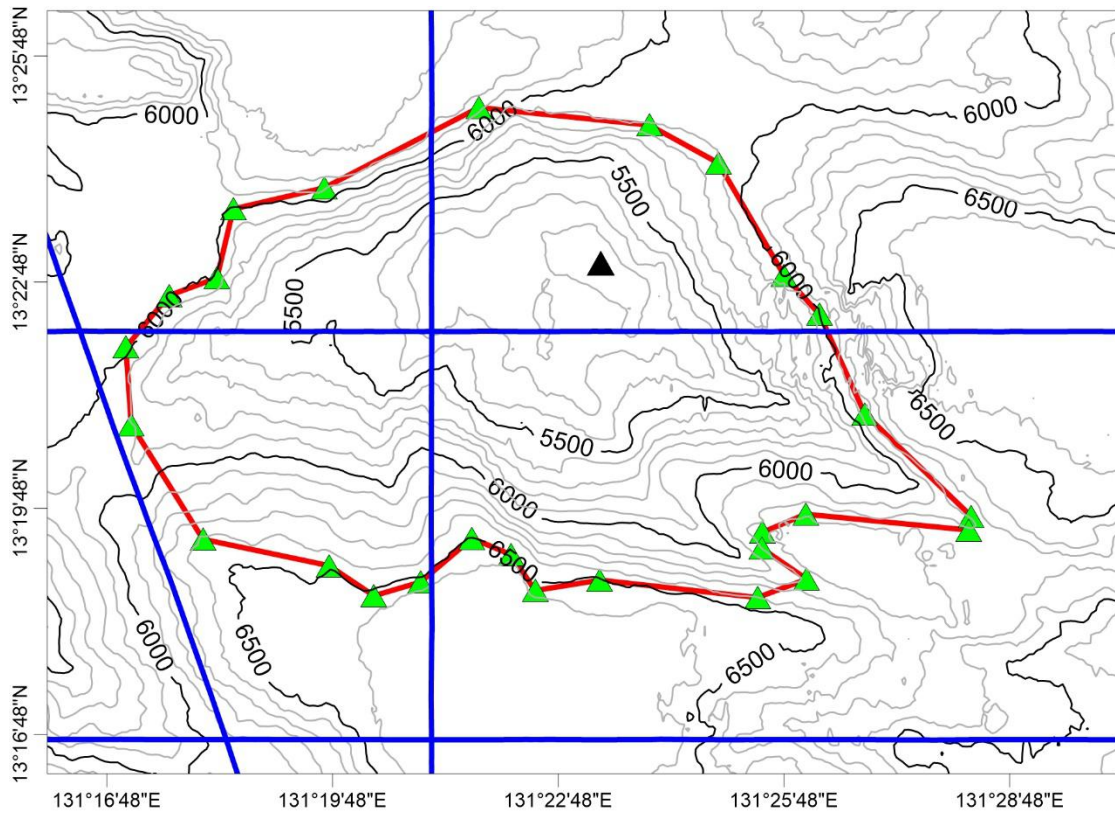
**Fig.1** Index map showing the location of Zuofu Seamount



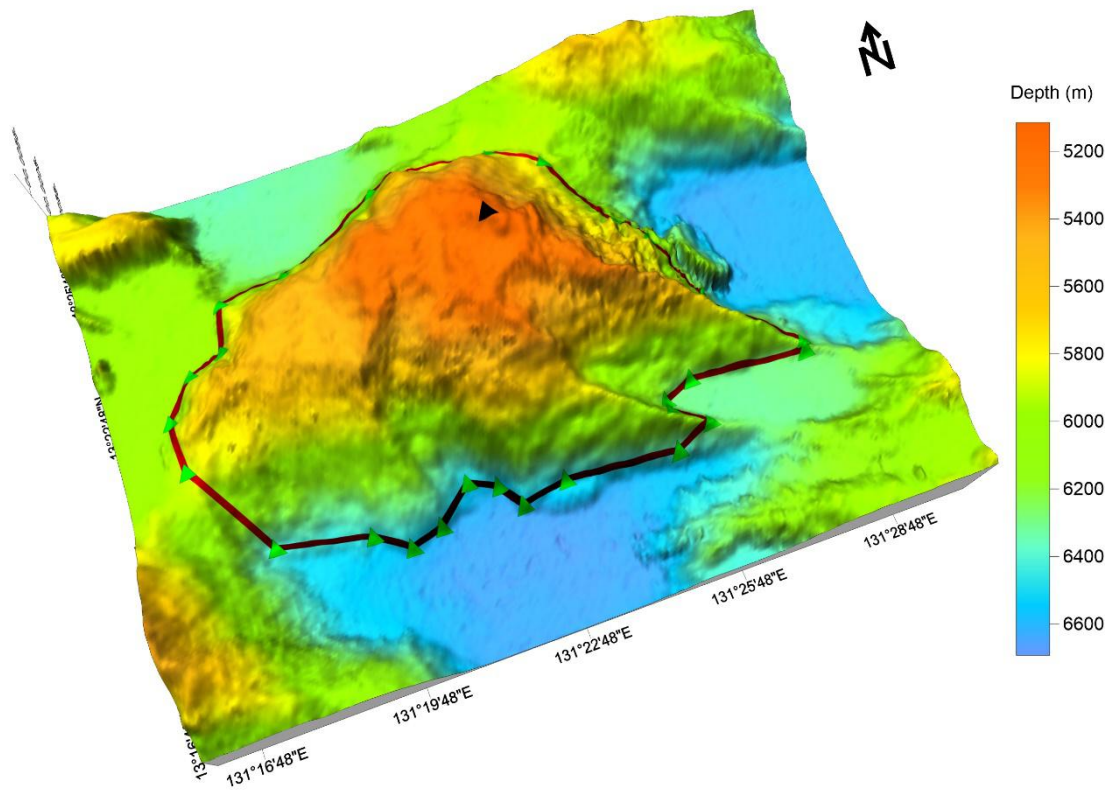
**Fig.2** Regional bathymetry map with nearby features of Zuofu Seamount



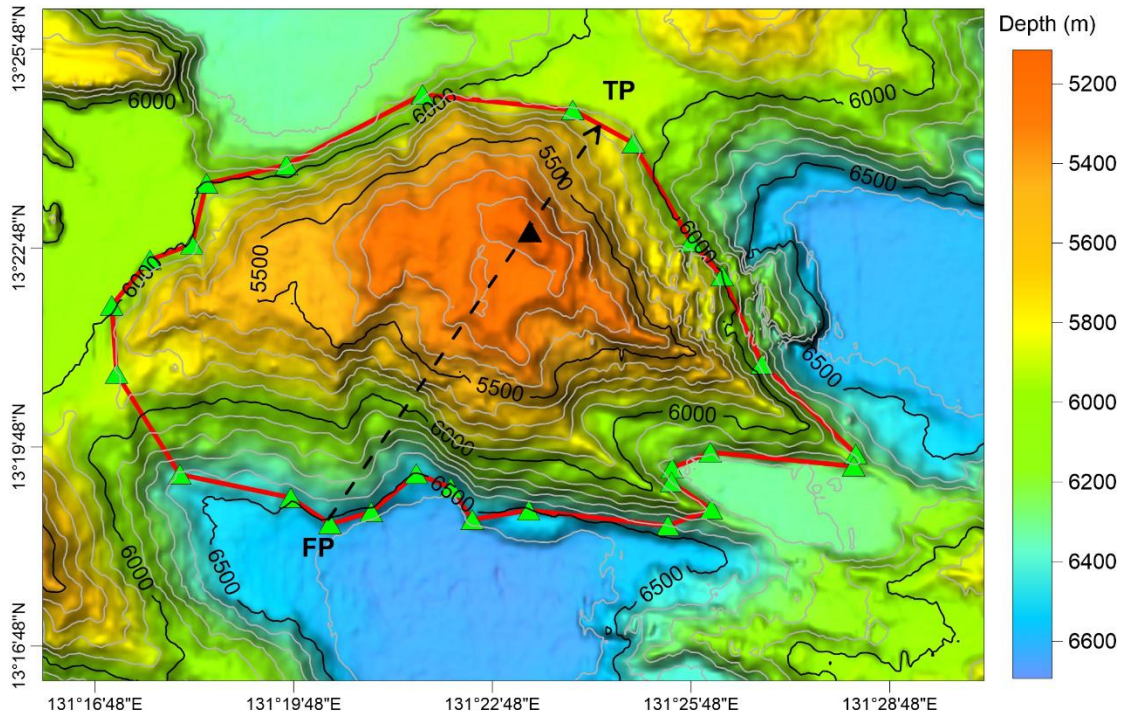
**Fig.3** Bathymetric map of Zuofu Seamount, showing track lines (Contours are in 100 m, blue lines are survey lines)



**Fig.4** Contour lines and Survey lines map of Zuofu Seamount  
(Contours are in 100 m, blue line as survey line)



**Fig.5** 3D topographic map of Zuofu Seamount



**Fig.6** Bathymetric map and profile of Zuofu Seamount