



Navigation in Narrow Waters and the impact of 3D display on Safety

David Acland

6 April 2011

**Acknowledgement: Dr Thomas Porathe
www.diva-portal.org**



Outline



- **Mental rotations**
- **Similarities and Differences of 3D on land and sea**
- **Egocentric and exocentric**
- **3D display of sea bed**
- **North up versus ship's head up**
- **Synthetic Sea lanes**
- **Comparison of performance**



Mental rotations



- **Take time**
- **Degree of difficulty increases as rotation gets larger**
- **We get worse with age**
- **But experience helps**
- **Men are slightly better than women but not much**



Similarities



- **Flat screen**
 - **Therefore 3D is represented by:**
 - **Foreshortening**
 - **And sometimes overlaid grid lines**
 - **Colour**
 - **Shading**
- **3D is a deliberate trick of perception**
- **Movement of beholder important to achieve effect**



Differences



- **The sea surface is featureless**
- **Horizontal distances at sea are much greater.**
- **Land maps, and particularly town maps, have much greater density of detail.**
- **In car navigation systems are not used to maintain track.**



Egocentric and Exocentric



- Egocentric.
 - The view we see through our own eyes
 - Sometimes called:
 - “The forward field of view”.
- Exocentric.
 - An external view.
 - The bird’s eye perspective of traditional charts.



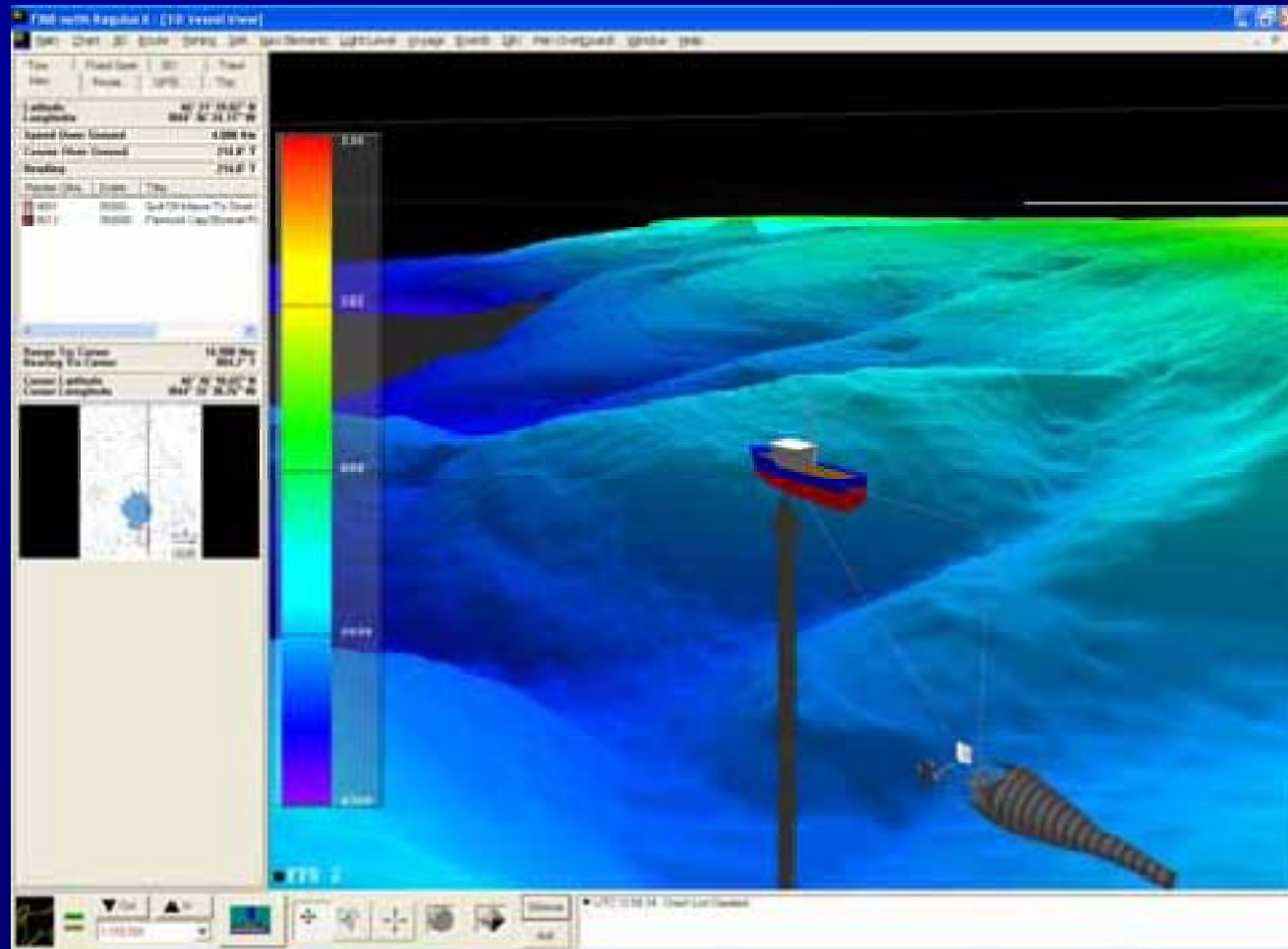
Benefits of each



- **Egocentric better for route execution**
 - Not so many mental rotations needed
 - Complex moving problems
 - Stressed environments
- **Exocentric better for passage planning**
 - Tends to be canonical
 - Better at big picture
 - Better for Position reporting



3D Display of Seabed





Experiment



- **4 techniques:**
 - Paper Chart
 - Electronic North up
 - Electronic Ship's Head up
 - 3D
- **Spread of navigational experience**
- **Ages 15-64**
- **Roughly balanced male female**



Paper Chart 1



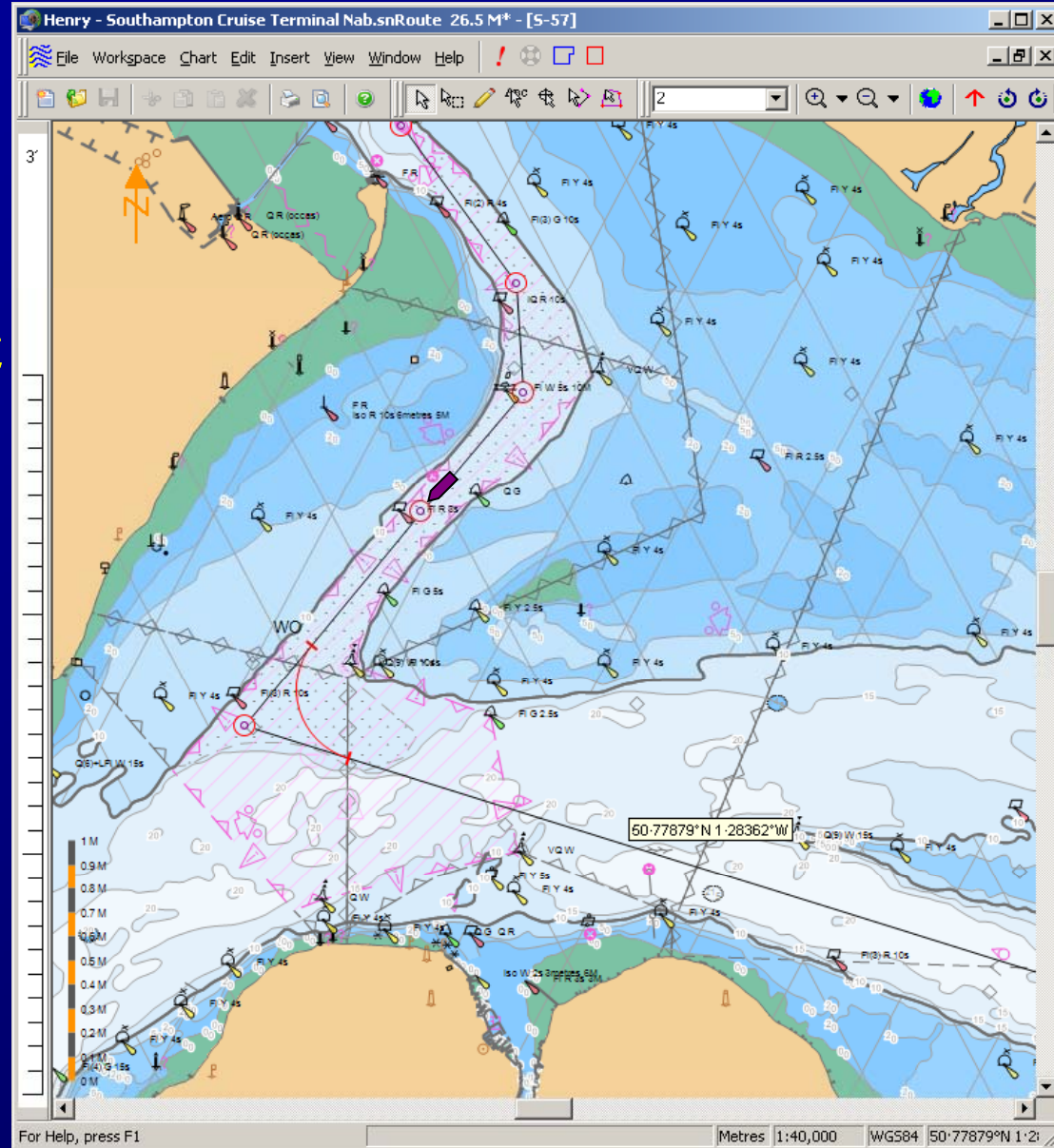


Paper Chart 2



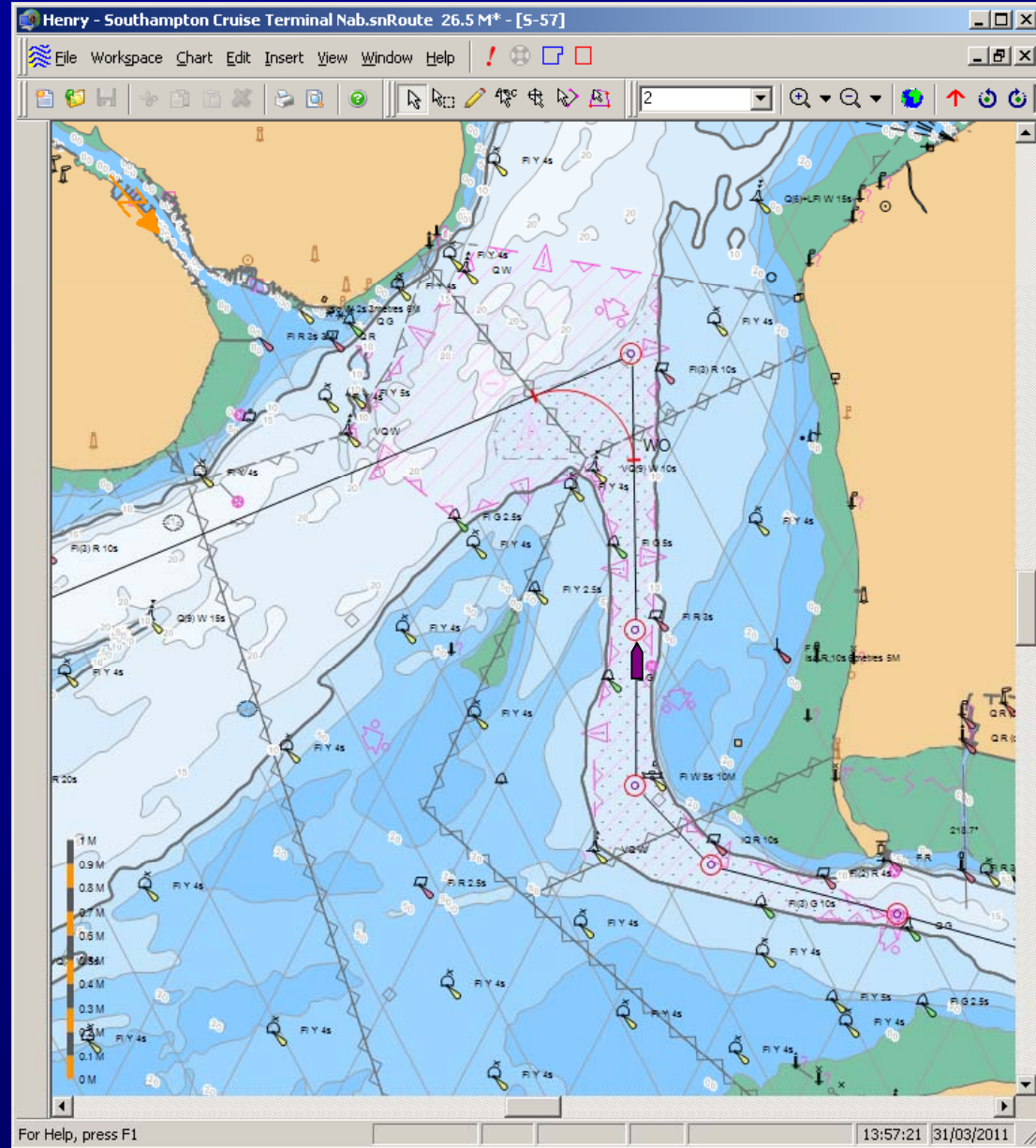


Electronic North up



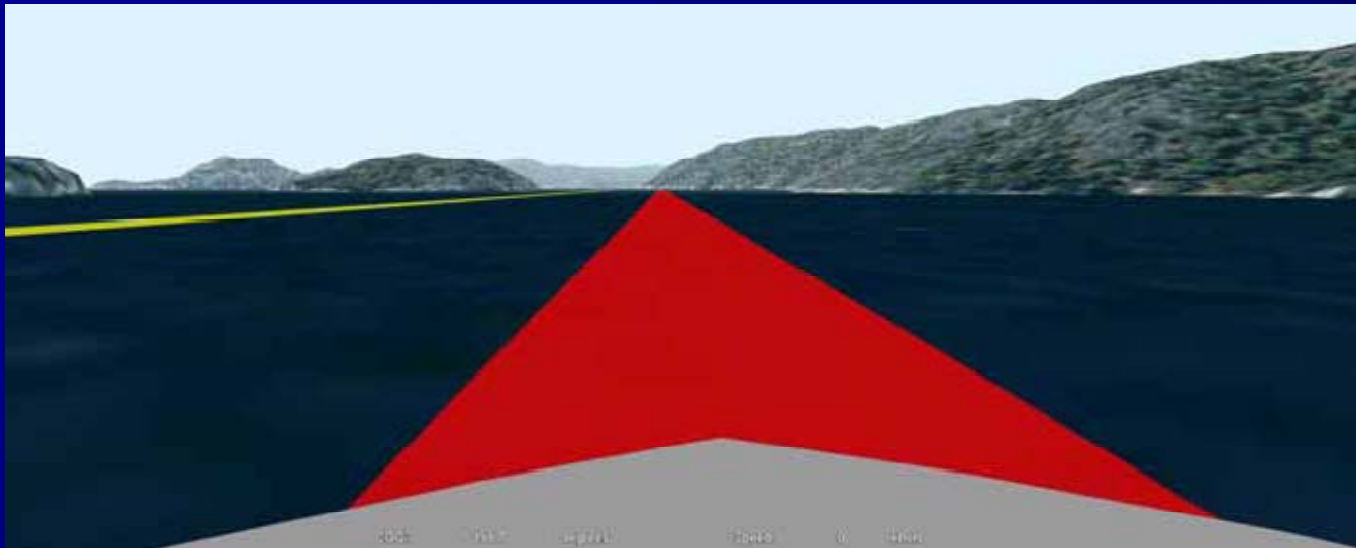


Electronic Chart Ship's Head Up



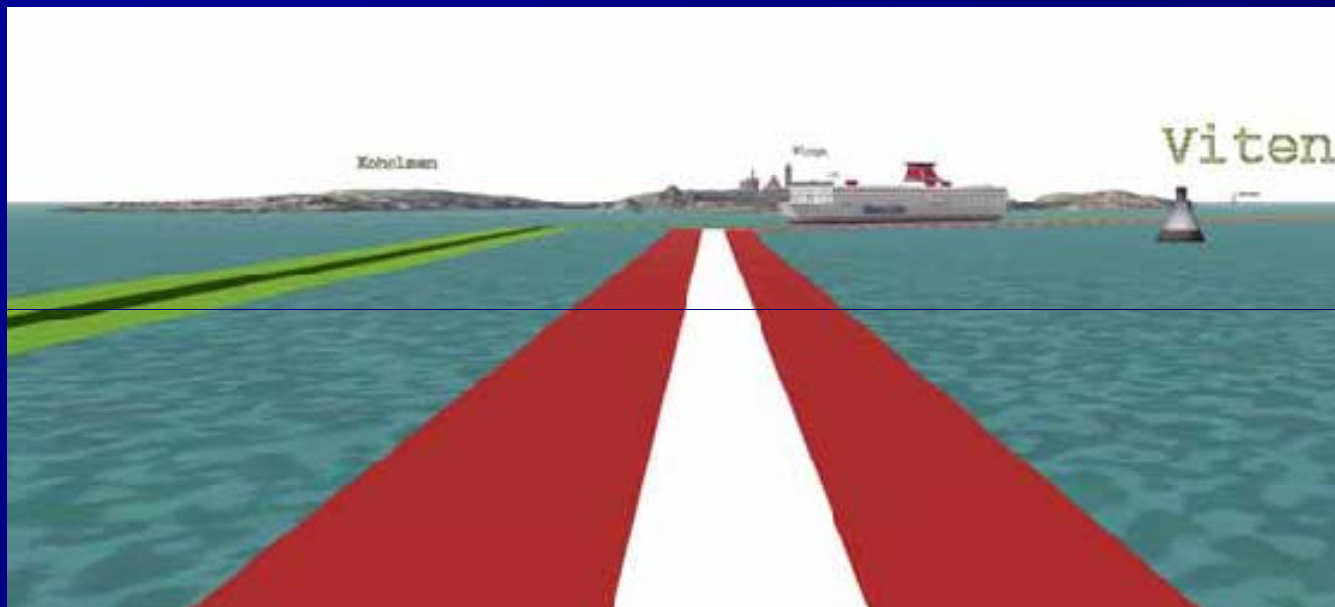


3D



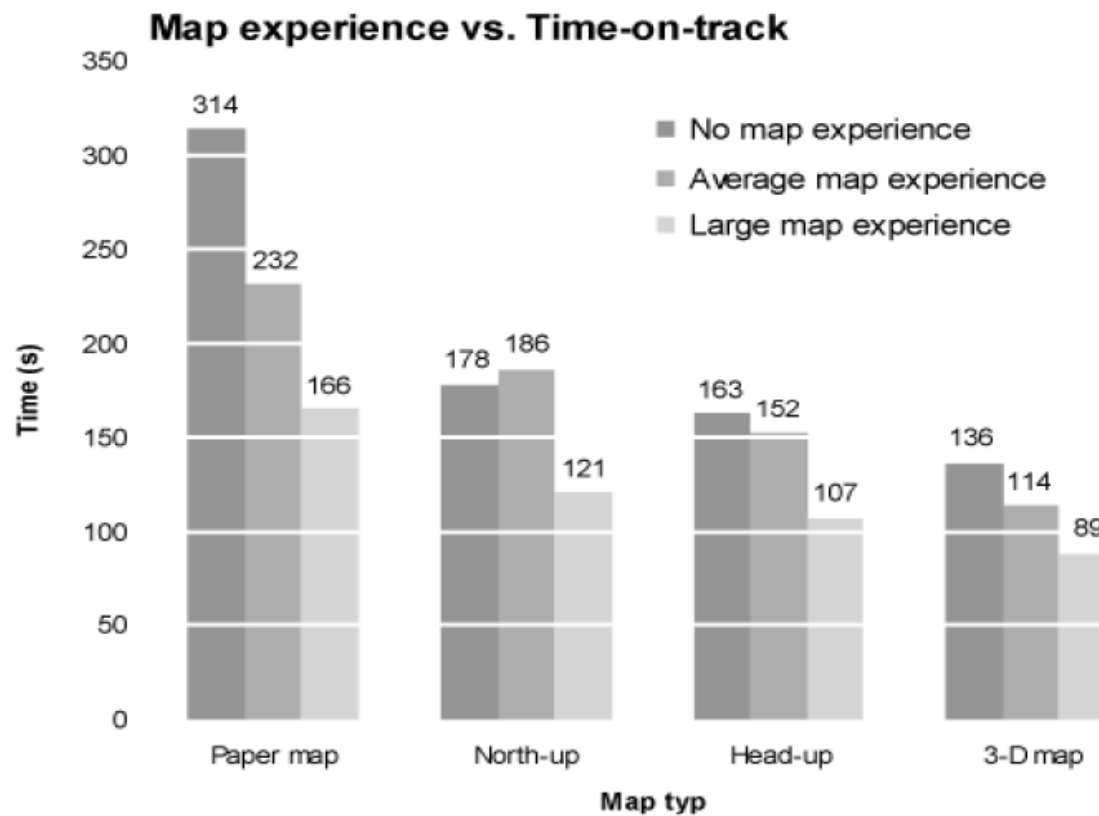


Ego-centric sea lane



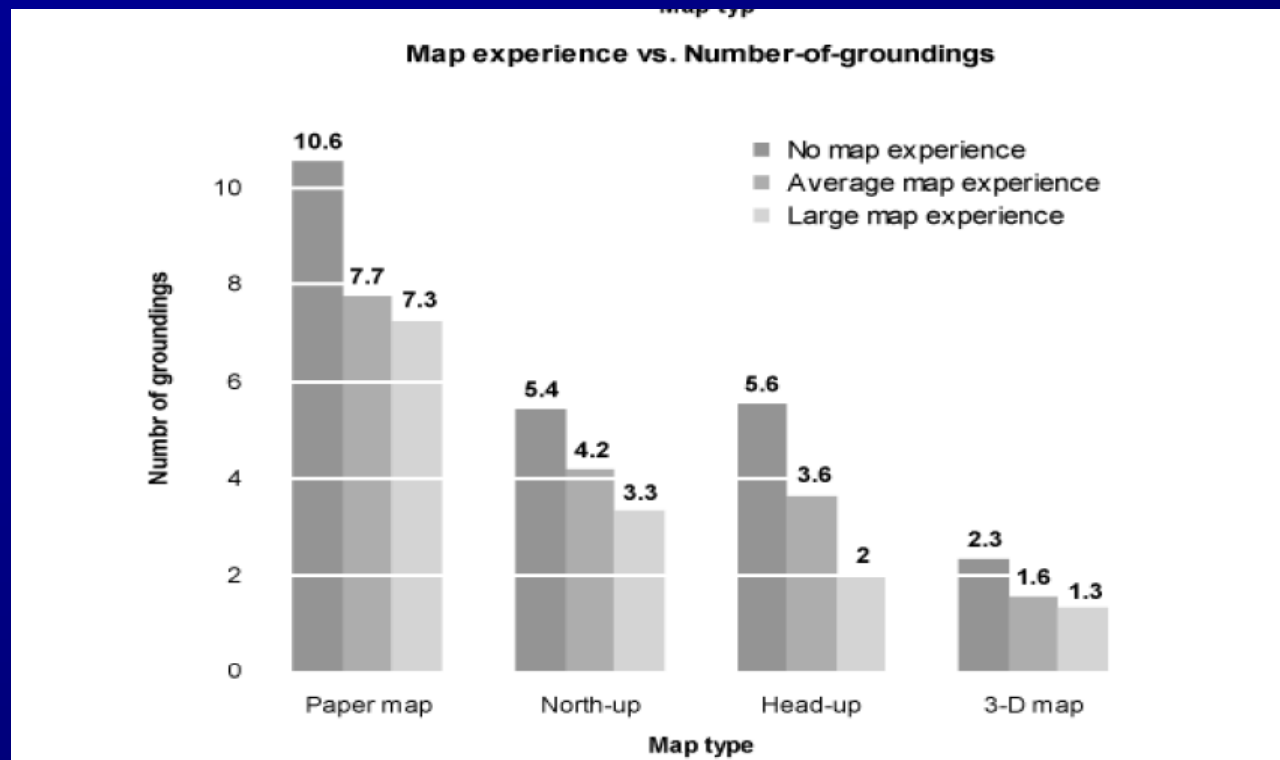


Results 1



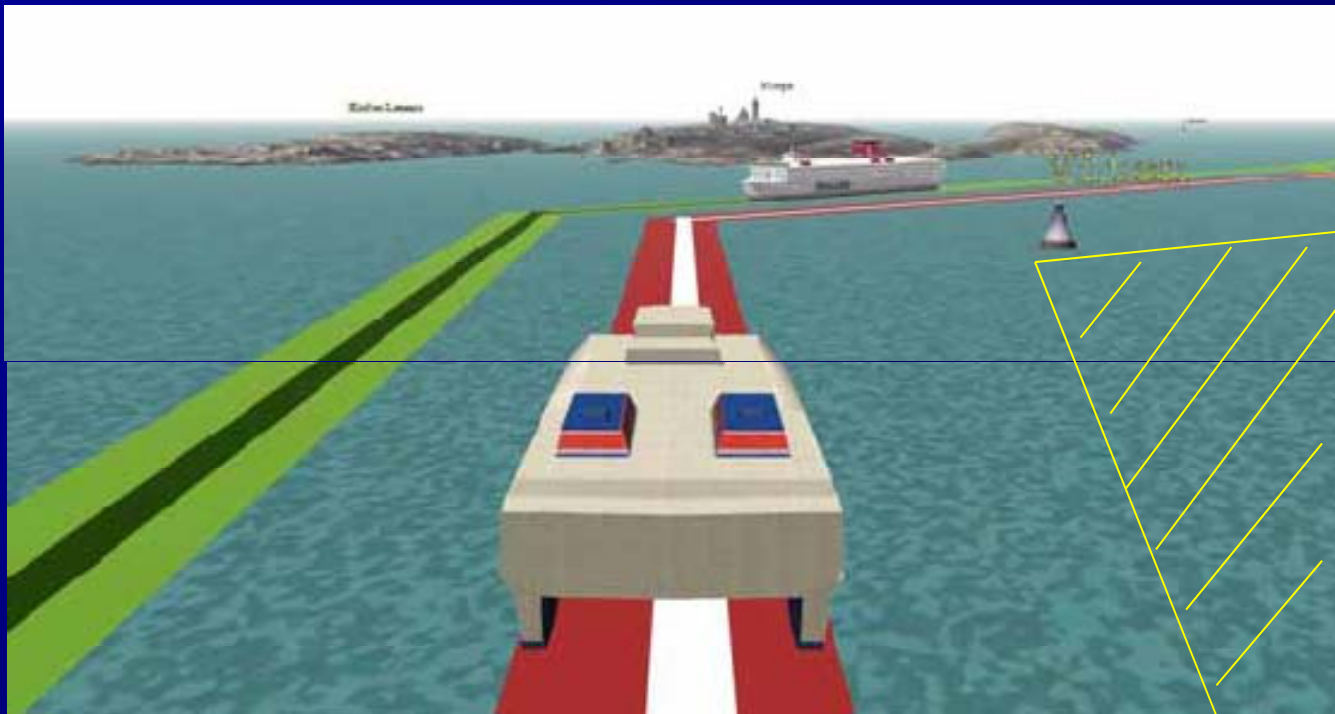


Results 2





Modified egocentric 3D view





Discussion

