

## Symbology for Fairway area

### Defined by the CSPCWG

(29 May 2007)

#### Introduction

Finland informed at the BSHC10th Conference on the proposal to define an INT symbology for fairway areas [BSHC/10/H1]. This issue was referred to the CHRIS/CSPCWG for further evaluation. The SCPCWG has developed a symbology for these areas, see an example in Fig. 1 and draft specifications in Annex 1.

The new symbology has been sent to the IHO Member States for approval by IHO Circular Letter 8/2007.

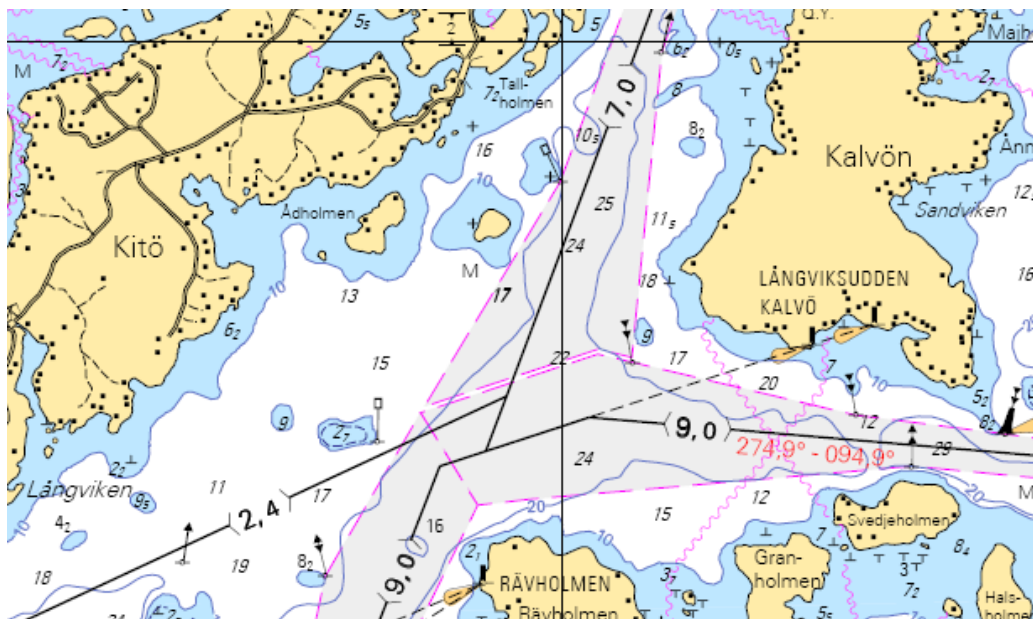


Fig. 1. Example of proposed fairway area symbology on a printed chart.

#### Actions required from the BSHC 12<sup>th</sup> Conference:

The BSHC 12<sup>th</sup> Conference is requested to take note on this information.

---

Annex 1: Proposed new specification for fairway area.

Annex 1: Proposed new specification for fairway area

[Extract from proposed new version of M-4. IHO CL 8/2007 refers.]

Chart Specifications of the IHO  
Medium and Large-scale Charts

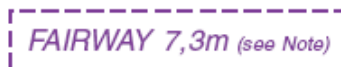
**B – 430**  
Page 9

**B-434.5** A Fairway designated by a regulatory authority (see B-432.1c) must be delimited by bold magenta dashed lines (M15). The ends of the fairway should be closed. Sections of different minimum depth or maximum draught should be separated by the same limit symbol (M15).

The magenta legend *FAIRWAY* (or equivalent) or its name should be inserted if possible, in the area and parallel with the channel's limits. Soundings and depth contours should be included as appropriate. Fairways may consist partly or entirely of dredged or maintained areas, see B-414. If the limits of the Fairway coincide with the limits of a dredged or maintained area, or light sector limit, the usual cartographic principles apply, see B-439.6.

A Fairway may be highlighted with grey tint. Regulated or recommended direction of traffic flow arrows may be added, as with a two-way route (see B-435.6). A note may be added to provide further guidance, eg: classes of vessel recommended to use the fairway, survey quality and date, an explanation of the maximum draught symbol.

a. A **minimum depth** (see B-432.4b) may be indicated, eg:



FAIRWAY 7,3m (see Note)

b. An authorized (or recommended) **maximum draught** (see B-432.4a) may be indicated, eg:



FAIRWAY <7,3m>  
(see Note)



FAIRWAY <7,3m>  
(see Note)

Alternatively, where a leading line lies within a fairway, the maximum authorized (or recommended) draught may be shown on the leading line (M6), see B-434.3.