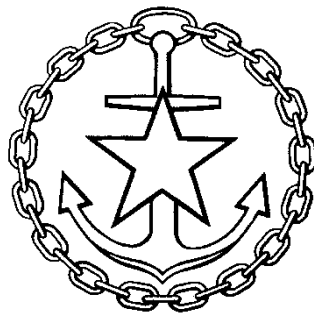


**DEPARTMENT OF NAVIGATION AND OCEANOGRAPHY
MINISTRY OF DEFENSE OF THE RUSSIAN FEDERATION**

**NATIONAL REPORT
OF THE RUSSIAN FEDERATION**



17-th MEETING of BALTIC SEA HYDROGRAPHIC COMMISSION

Finland, Helsinki, 18-20 September, 2012

The present report reflects activity results of the Hydrographic Office of the Russian Federation since the last submission of the national report at the 16-th meeting of BSHC, September, 2011, Norrköping.

1. Hydrographic Office

In accordance with the legislation of the Russian Federation, matters of navigational and hydrographic support of navigation in marine waters under national jurisdiction, except for the tracks of the Northern Sea Route, have been attributed to the competence of the Ministry of Defense of the Russian Federation.

Functions of planning and organization of navigational and hydrographic support of navigation in marine waters under national jurisdiction and in the high seas is entrusted to the Department of Navigation and Oceanography of the Russian Federation Ministry of Defense (abbreviated DNO of the RF MD).

Department of Navigation and Oceanography is an organization authorized by the Ministry of Defense of the Russian Federation, and it represents the State in civil legal relations arising in the field of navigational and hydrographic support of navigation. It is in charge of the Hydrographic Office of the Navy.

The basic directions of activity of the Hydrographic Office of the Navy are:

- oceanographic, hydrographic and marine geophysical researches in maritime waters under national jurisdiction and in the high sea;*
- edition of nautical charts, manuals and publications for all parts of the World Ocean and corresponding supply of mentioned products to Russian and foreign mariners;*
- collecting and making available for mariners information on changes in sailing conditions and regime of navigation in maritime waters under national jurisdiction and in the high seas;*
- maintenance, improvement and development of aids to navigation in the seas along the coast and in marine waters under national jurisdiction of the Russian Federation, with the exception of the tracks of the Northern Sea Route.*

Hydrographic Office of the Navy consists of units based in St. Petersburg, and regional hydrographic services for the Northern, Pacific, Baltic, Black Sea and Caspian Sea Regions.

Subdivisions of regional hydrographic services: expeditions, hydrographic groups and parties directly carry out totality of oceanographic, hydrographic and geophysical works, produce processing and transmitting of the materials to the Charts Division of the Navy.

Hydrographic Office of the Navy participates in joint, including international, oceanographic and hydrographic expeditions.

Department of Navigation and Oceanography directs preparation and edition of new navigational charts, manuals and publications and reissue of existing ones.

Direct preparation and edition of charts, manuals and publications are realized in the Charts Division of the Navy. Materials of hydrographic research carried out by regional hydrographic services, as well as contributions from interagency cooperation to hydrographic researches, serve as a base for edition of charts and books.

2. Surveys

2.1. Areas of Coverage by New Surveys

Table 1

No.	Area of Activity	Kind of Activity	Scale	Year of Activity
Gulf of Finland				
1	Water Area of Reka Bol'shaya Neva, Gutuyevskiy Kovsh, Approach Canal and Kovsh of Passenger Area, Korabel'nyy Fairway (Approach Canal)	Area survey, sounding and topographic survey	1:2 000	2011
2	Northern Kronshtadtskiy Fairway, Fairway No.11 from Petrodvortsovaya Gavan' to Sankt-Peterburg Maritime Canal, Water Area of Fort Konstantin (Roshal')	Area survey and topographic survey	1:2 000	2011
3	Mys Stirsudden to Posyolok Pesochnyy between parallels 60°03.0' N and 60°10.4' N and meridians 29°02.4' E and 29°26.0' E (up to 5m depth contour)	Sounding	1:10 000	2012
4	Mys Stirsudden to Gorod Zelenogorsk between parallels 60°09.0' N and 60°11.8' N and meridians 29°00.8' E and 29°42.2' E (up to 5m depth contour)	Sounding	1:10 000	2012
5	Mys Osinovyy to Mys Seraya Loshad' between parallels 59°57.5' N and 60°02.0' N and meridians 29°00.0' E and 29°13.5' E	Sounding	1:5 000	2012

6	Petrodvorets to Posyolok Gorskaya between meridians 29°56.0' E and 30°00.0' E		Area survey	1:2 000	2012
7	Harbours of Kronshtadt: Zavodskaya, Ugol'naya, Kabotazhnaya, Srednyaya and Lesnaya		Area survey	1:2 000	2012
Topographic-Geodesic Activity					
8	Eastern Part of Gulf of Finland between meridians и 29°26' E and 29°22' E		Topographic survey	1:5 000	2012
9	Ostrov Moshchnyy Territory of Light Attendant Station of Moshchnyy Lighthouse		Topographic survey	1:1 000	2012
10	Ostrov Bol'shoy Tyuters Territory of Light Attendant Station of Bol'shoy Tyuters Lighthouse		Topographic survey	1:1 000	2012
11	Luzhskaya Guba	Novaya Gavan' Ruch'i	Area survey and topographic survey	1:2 000	2011
12		Anchorage Water Area 11A	Area survey	1:2 000	2011
13		Dumping Grounds No.307 and No.315, Luzhskiy Maritime Canal, Water Area "Sever-2", Automobile-Railway Complex, First Turn of Ust'Luzhskiy Container Terminal	Sounding, area survey and topographic survey	1:5 000 1:2 000	2011
14	Vyborgskiy Zaliv	Sections of recommended route from Bol'shoy Tranzundskiy Roads to Proliv Syvasalmi and within Water Area of Offshore Marine Terminal (OMT) of Port Vysotsk at Mys Putevoy	Area survey and topographic survey	2011	1:5 000 1:500
15		Section of Saymenskiy Fairway from Mariankivi Beacon to Brusnichnoye Lock	Area survey	1:2 000	2011

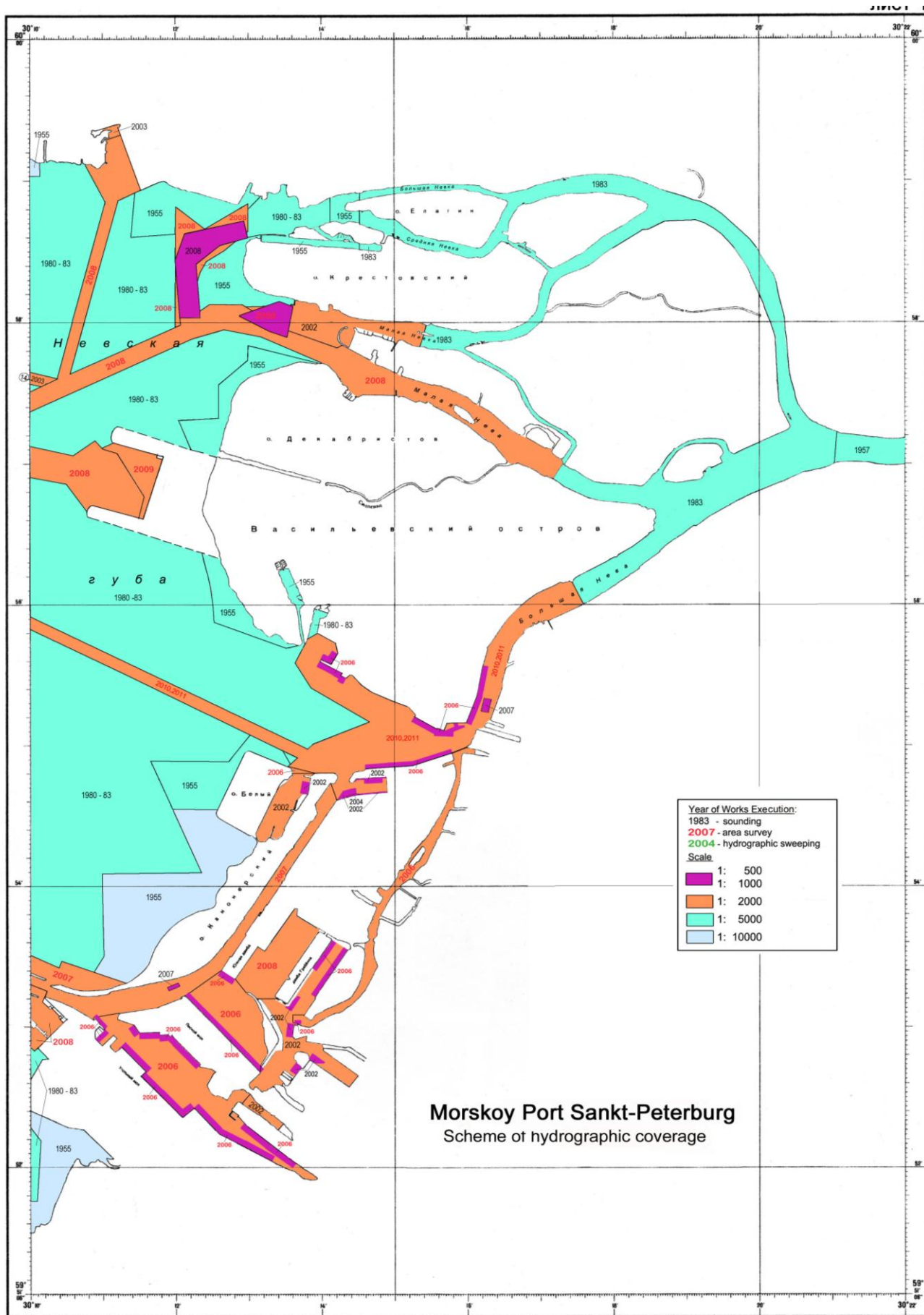


Fig. 1

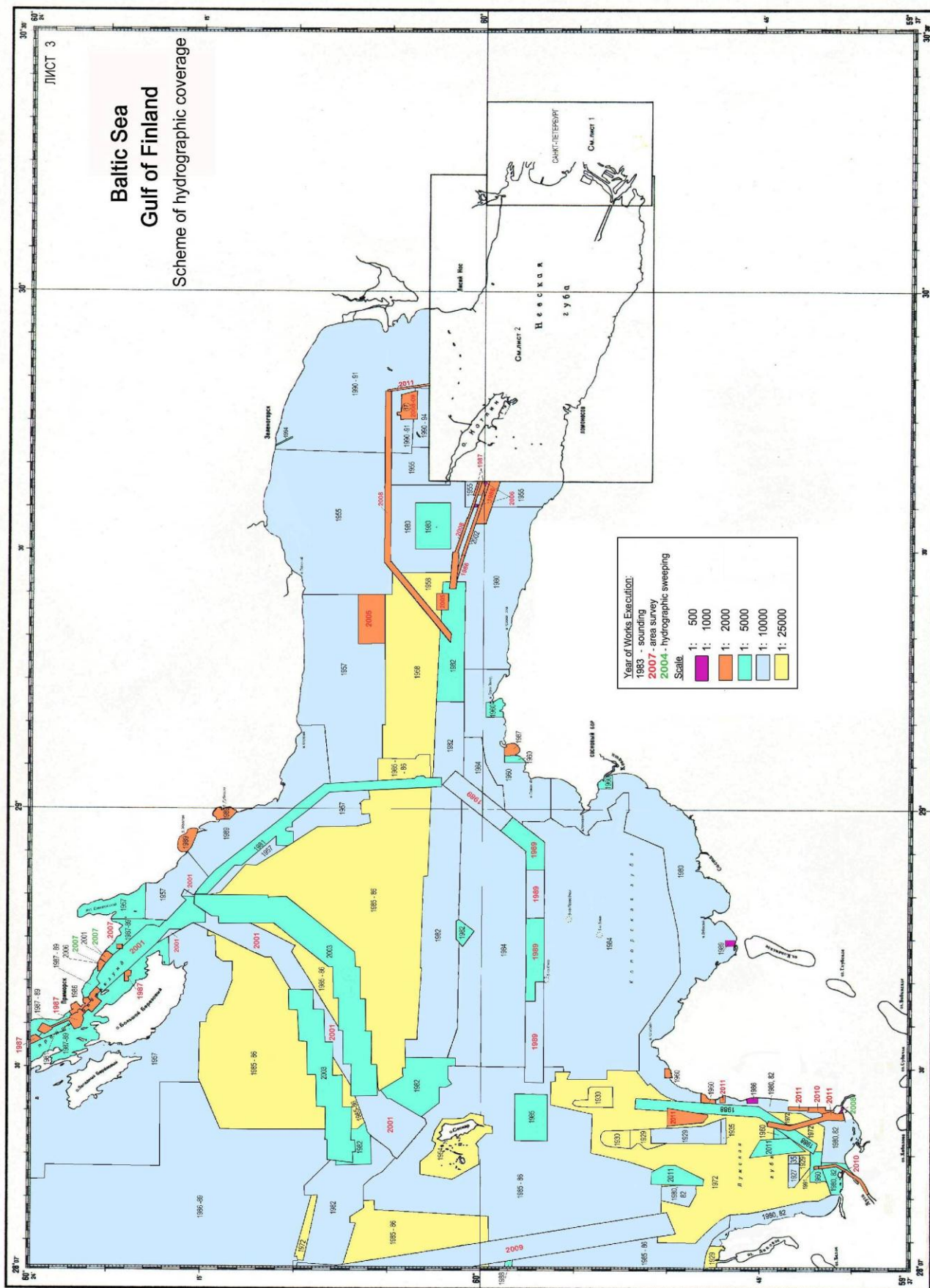


Fig. 2

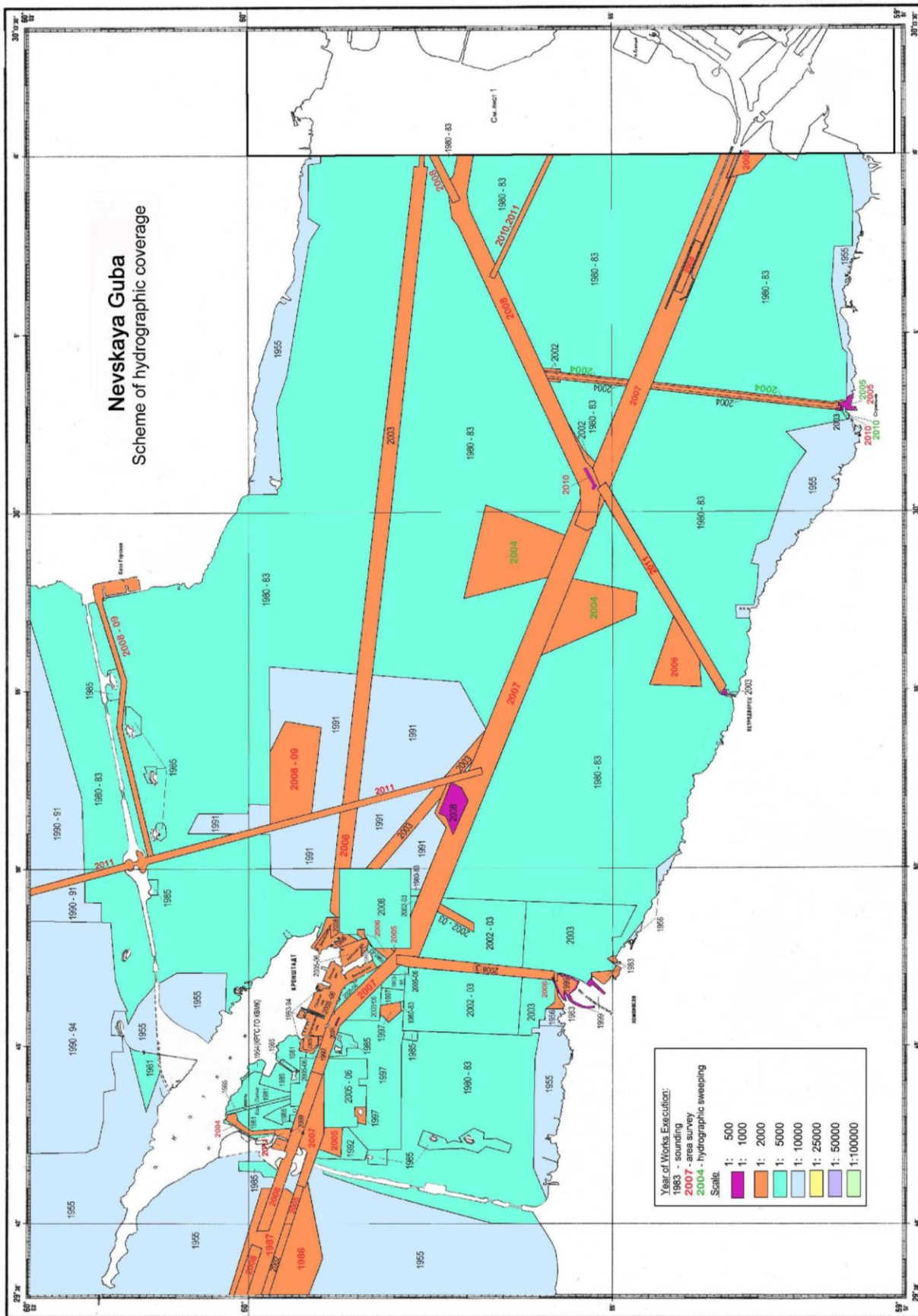


Fig. 3

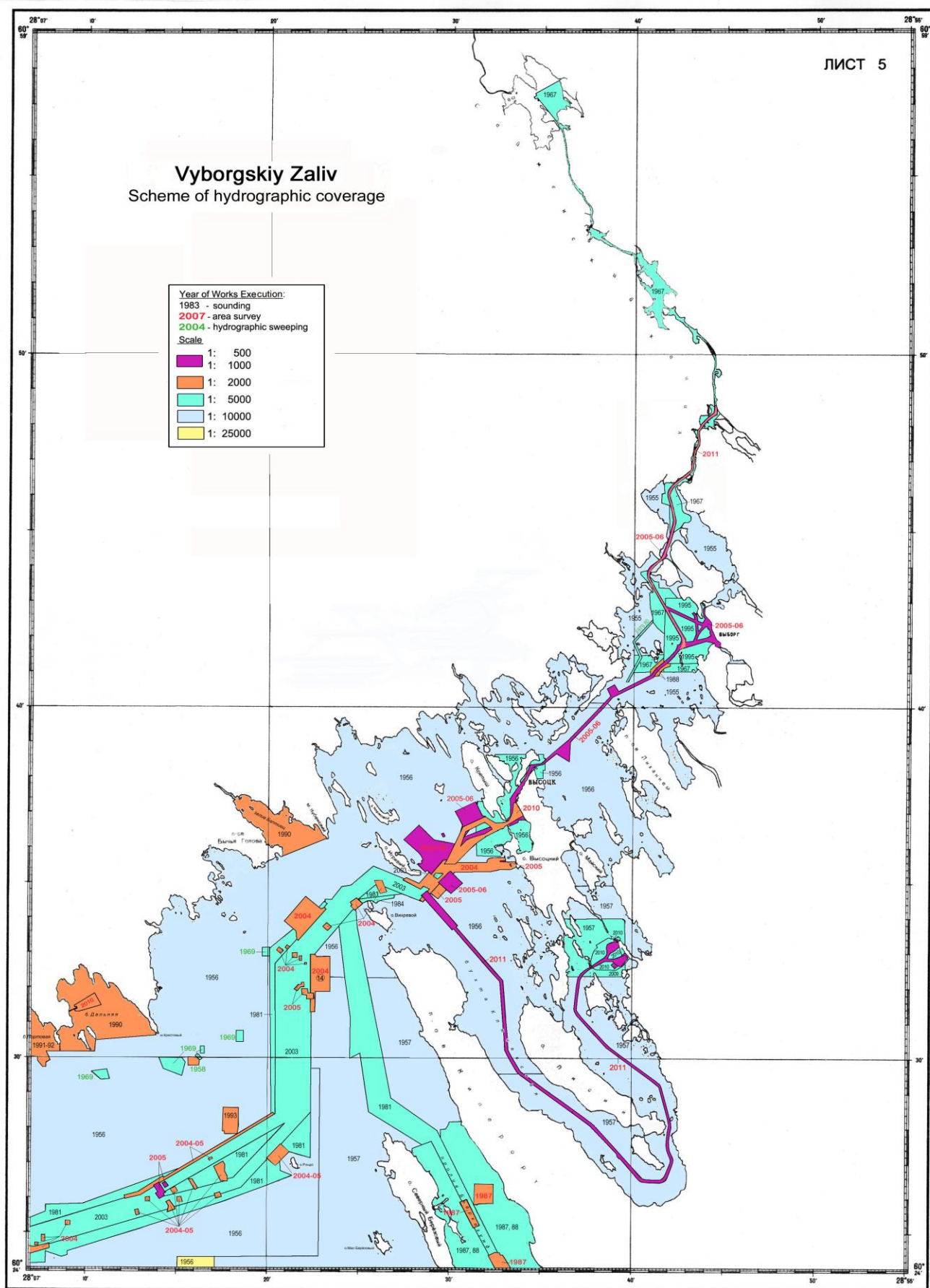


Fig. 4

2.2.1. New Technologies and/or Equipment

For period since the last meeting of the Commission, new technologies and the equipment have not been used.

2.2.2. New Vessels

For period since the last meeting of the Commission, new vessels have not been put into service.

3. New Charts and Updates

3.1. Electronic Navigational Charts

For period since the last meeting of the Commission, the new electronic navigational charts have not been edited.

3.2.1. Method of ENC Distribution

Merchandising of electronic navigational charts is carried out through the official distributor of cartographic products of Hydrographic Office of the Russian Federation in frames of the standard S-63.

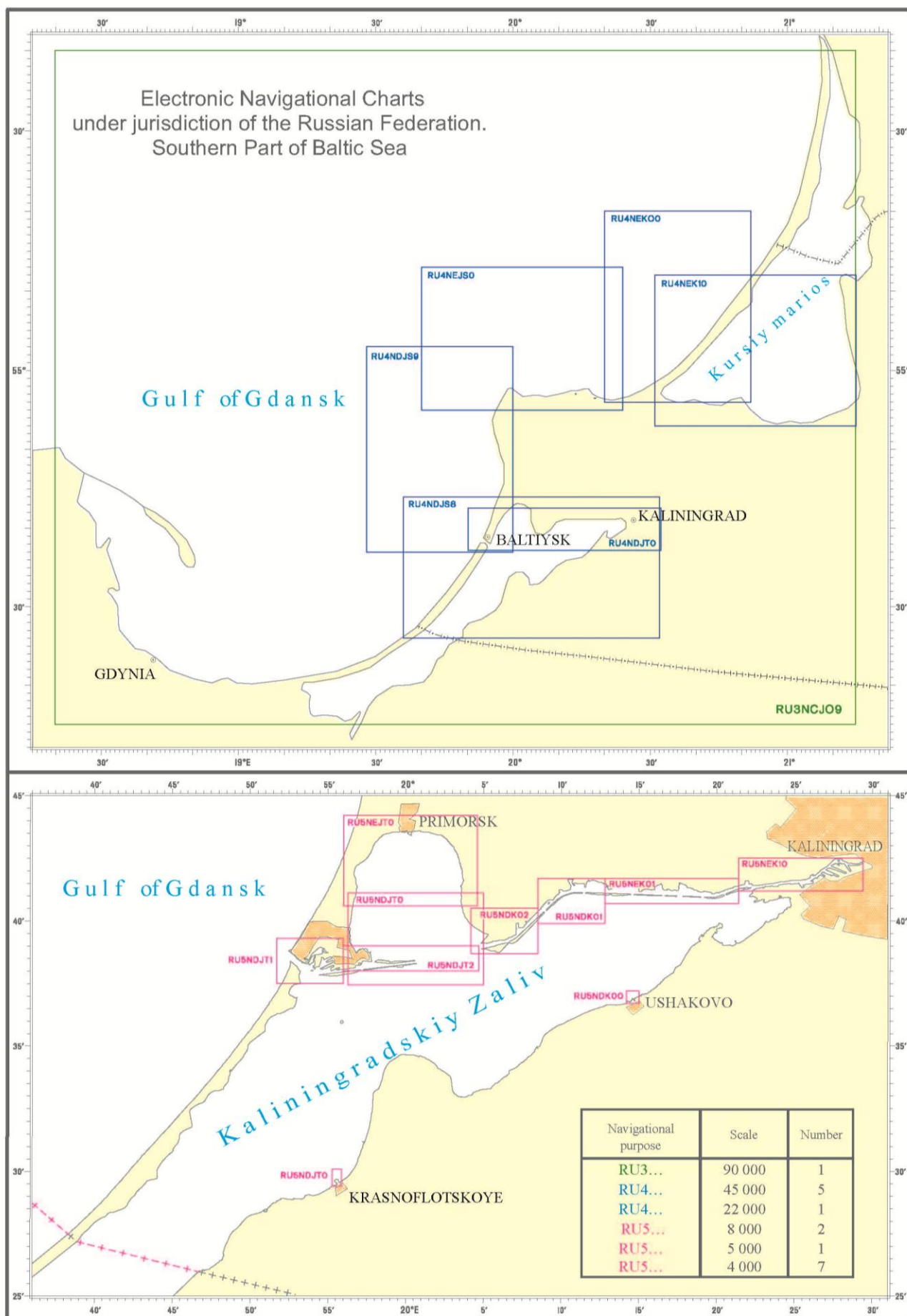


Fig. 6

3.2.2. Raster Navigational Charts (RNCs)

DNO of the RF MD does not distribute RNCs.

3.4. International Charts.

To date, the DNO of the RF MD has fully performed its obligations to issue of International Charts on the waters of the Gulf of Finland and the South-Eastern Part of the Baltic Sea. In recent years, it only re-publishes these charts.

In accordance with decision of BSHC, charts INT1216 and INT 1217 are transferred to the Republic of Latvia, and chart INT1215 will be re-published in the Republic of Estonia. The following is a complete list of International Charts on the area of responsibility of Russia as of June 1, 2012.

List of International Charts Edited under Frames of Baltic Sea Hydrographic Commission

Table 2

No.	Chart INT No.	Chart Russian No.	Chart Name	Scale 1:	Date of Publication	Date of Printing	Adopted Date of New Edition
1	1023	21001	Baltic Sea. Gulf of Finland	500 000	2007	2007	
2	1213	22060	Western Part of Gulf of Finland	250 000	2009	2009	
3	1214	22061	Eastern Part of Gulf of Finland	250 000	2007	2007	
4	1255	25006	Baltic Sea. Gulf of Finland. Ostrov Rondo to Ostrov Sommers	50 000	2007	2007	
5	1256	27060	Bukhta Dal'nyaya	10 000	2012	2012	
6	1257	28007	Approaches to Vysotsk and Vyborg	25 000	2008	2008	Quarter IV, 2012.

7	1258	28008	Baltic Sea. Gulf of Finland. Povorotnyy Lighthouse to Ostrov Malyy Vysotskiy. Inset A. Approach Channel to Oil Terminal Lukoyl-II	10 000 5 000	2008	2008	Quarter IV, 2012
8	1259	28010	Baltic Sea. Vyborgskiy Zaliv. Approaches to Saymenskiy Kanal. Dubovyy Light-beacon to Ostrov Lavola.	12 500	2008	2008	
9	1260	28011	Baltic Sea. Vyborgskiy Zaliv. Approaches to Saymenskiy Kanal. Bukhta Zashchitnaya to Brusnichnoye Shluz	5 000	2008	2008	
10	1261	25004	Baltic Sea. Gulf of Finland. Kronshtadt to Krasnaya Gorka	25 000	2011	2011	
11	1262	25002	Baltic Sea. Gulf of Finland. Sankt-Petersburg to Kronshtadt.	25 000	2011	2011	
12	1263	27047	Maritime Port Sankt-Peterburg	10 000	2010	2010	
13	1280	25052	Baltic Sea. South Part. Approaches to Kaliningradskiy Morskoy Kanal	50 000	2010	2010	
14	1281	27000	Kaliningradskiy Morskoy Kanal	25 000	2006	2007	
15	1282	27001	Baltic Sea. South Part. Port Baltiysk. Entrance to Kaliningradskiy Morskoy Kanal	5 000	2009	2009	
16	1283	27002	Baltic Sea. South Part. Kaliningradskiy Morskoy Kanal. Picket No.24 to Povorot Komsomol'skiy	5 000	2009	2009	

17	1284	27003	Baltic sea. Southern Part. Kaliningradskiy Maritime Canal. Povорот Komsomol'skiy	5 000	2006	2007	
18	1285	27004	Baltic Sea. South Part. Kaliningradskiy Morskoy Kanal. Povорот Izhevskiy.	5 000	2012	2012	
19	1286	27005	Baltic Sea. Southern Part. Kaliningradskiy Morskoy Kanal. Gavan' Vzmor'ye to Reka Pregolya Mouth	5 000	2006	2006	
20	1287	27006	Baltic Sea. South Part. Kaliningradskiy Morskoy Kanal. Mouth of Reka Pregolya to Port Kaliningrad	5 000	2007	2008	

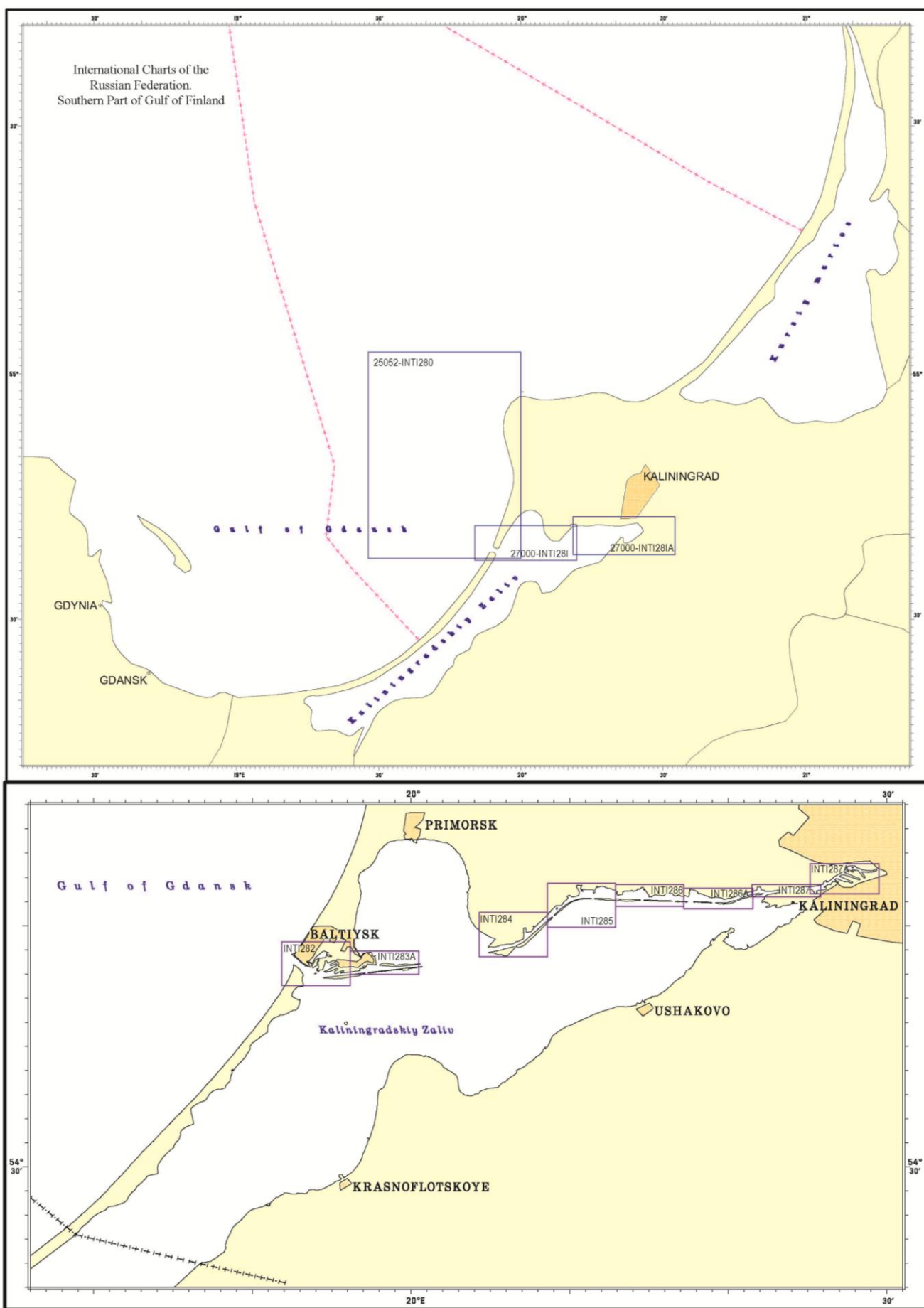


Fig. 7

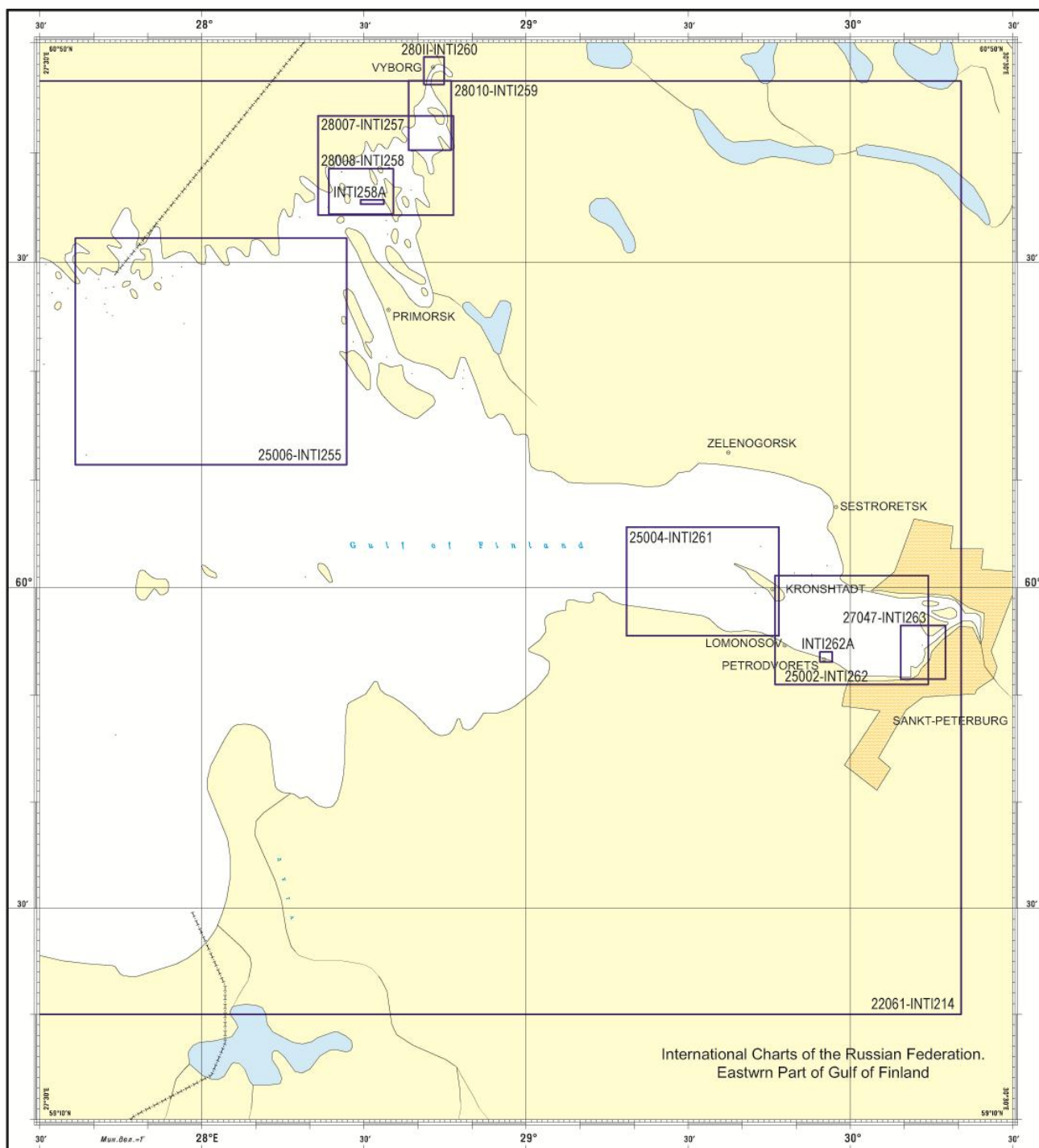


Fig. 8

3.5. National Paper Charts.

DNO of the RF MD issued 61 nautical charts on waters of the Baltic Sea under jurisdiction of Russia: Gulf of Finland, Vyborgskiy Zaliv and Kaliningradskiy Zaliv. Scale row is shown in table 3. The collection is maintained up-to-date using correction and re-publishing of charts as new hydrographic data become available.

Table 3

1:2 000 000	1
1:500 000	1
1:200 000 ¹	3
1:100 000	9
1:50 000	13
1:25 000 and larger	34

List of New National Paper Charts Published in 2011-2012.**Table 4**

No.	National No. of chart	Chart Name	Scale 1:	Date of Publication	Date of Printing	Date of Printing
1	22100	Mys Taran to Port Ustka	200 000	2011	2012	
2	25000	Sankt-Peterburg to Zelenogorsk	50 000	2011	2011	
3	25003	Mys Lisiy Nos to Zelenogorsk. Inset A. Zelenogorskaya Gavan'	25 000 10 000	2011	2011	
4	25007	Ostrov Kotlin and Approaches	25 000	2011	2011	
5	25043	Rybachiy Lighthouse to Zelenogorsk	50 000	2011	2011	
6	27048	Lomonosovskaya Gavan'	2 500	2011	2011	
7	28001	Eastern Section of the Northern Route of Flood-Defence	10 000	2011	2011	
8	28002	Western Section of the Northern Route of flood-defence facilities	10 000	2011	2011	
9	28003	Sestroretskiy Podkhodnyy Farvater	12 500	2011	2011	
10	28004	Bol'shoy Kronshtadtskiy Reyd	5 000	2010	2011	

¹ Reference-information chart 92600 on the Eastern Part of the Gulf of Finland, scale 1 : 200 000, 1-st Edition, November 11, 2006.

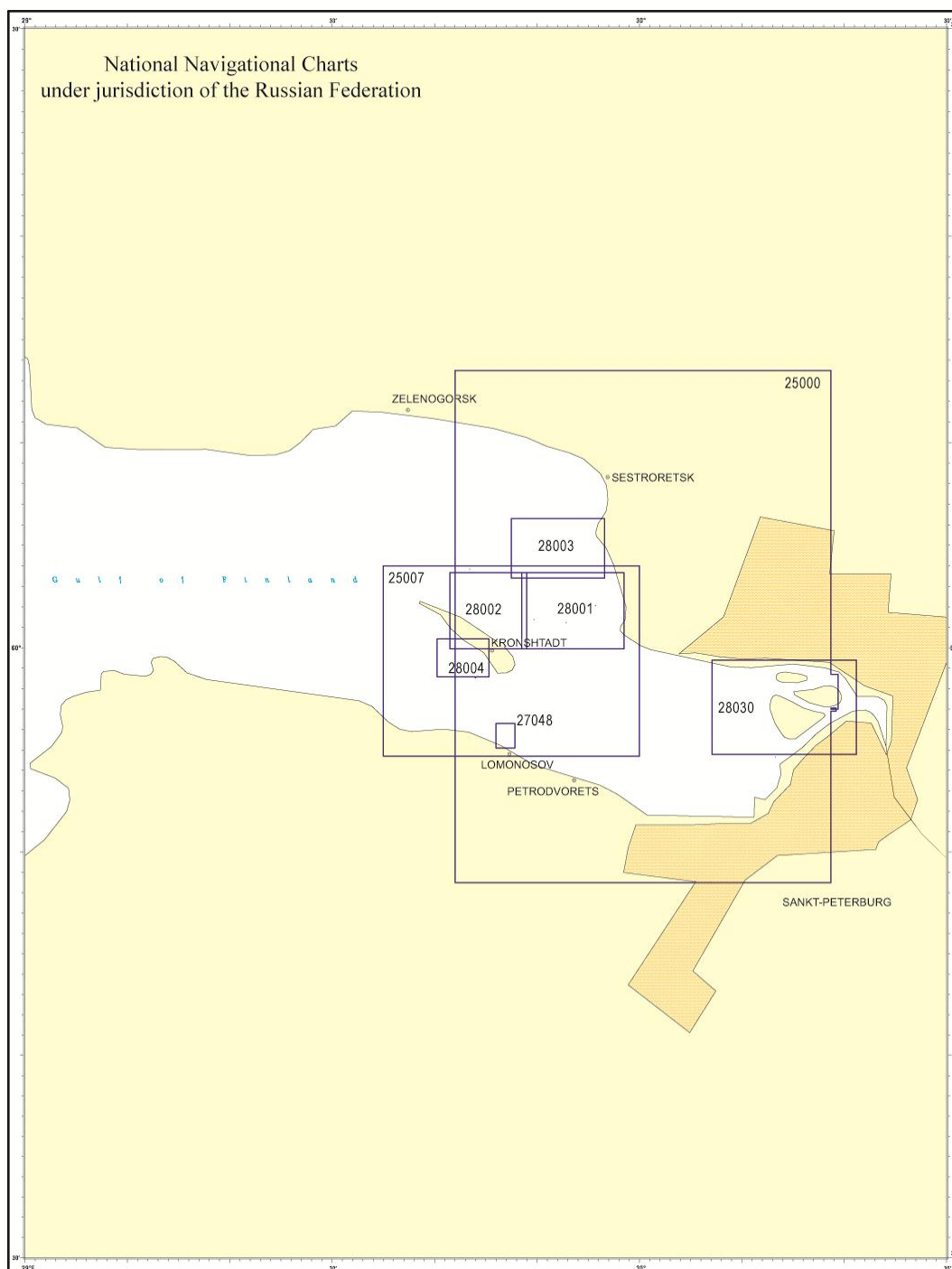


Fig. 9

3.6 Printing System of On-demand Charts

In 2007, printing complex of on-demand charts was developed in Russia. The objectives which are pursued by its development include saving with reproduction of nautical charts by polygraphic method and efficient supply of consumers with up-to-date cartographic products.

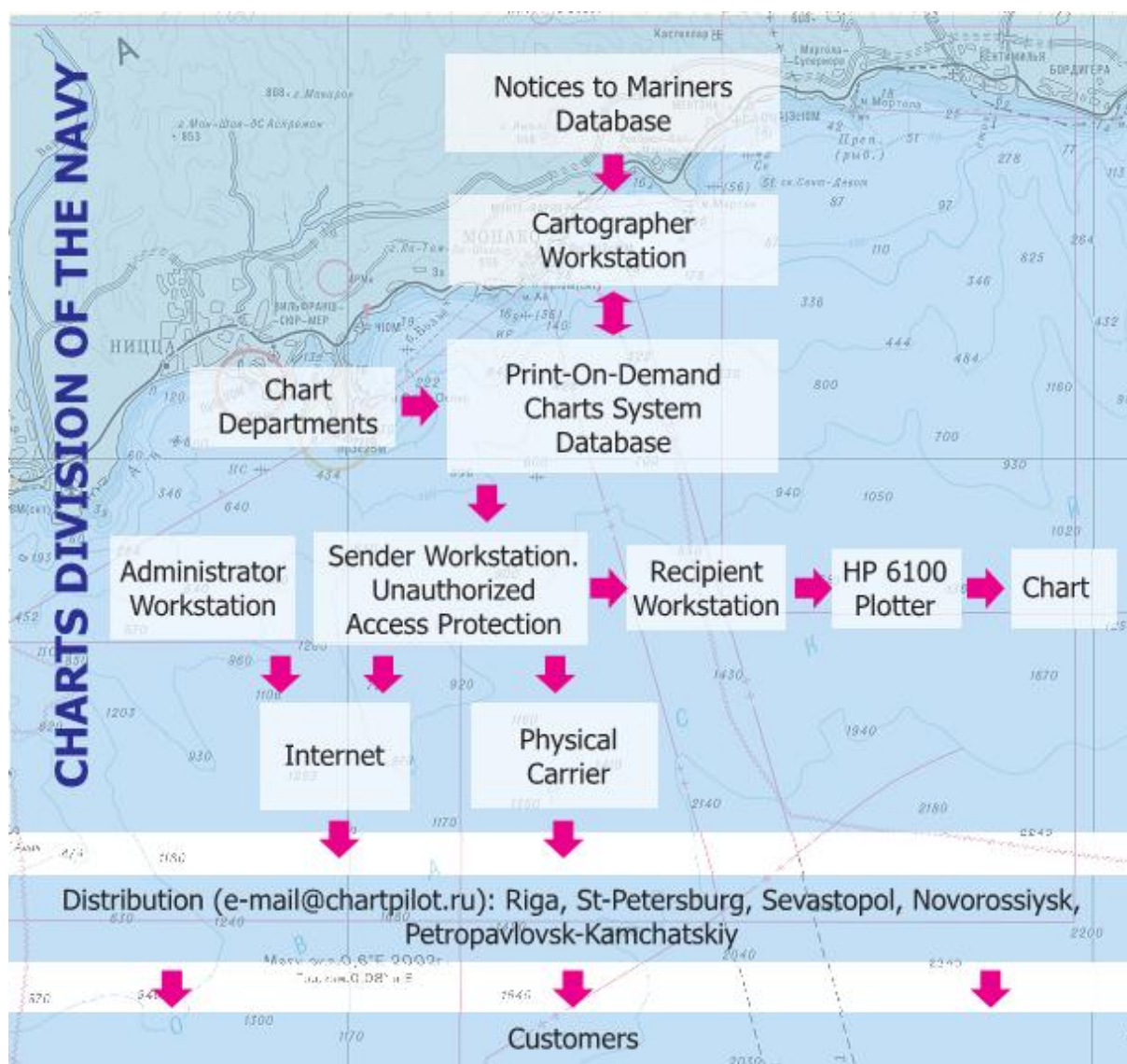


Fig. 10

Test operation of printing system of on- demand charts was launched in 2010 (NtM No. 28 of 2010). Beginning from 2011, published nautical charts are distributed only by way of printing on- demand charts. At present, the base of on- demand charts contains more than 500 nautical charts.

4. New publications and updates.

4.1. New Publications.

For period since the last meeting of the Commission, new publications have not been issued.

4.2. Updated Publications.

Issued publications are updated from NtMs of DNO of the RF MD.

4.3. Means of Supply (e.g. paper, digital).

All publications are supplied on a paper basis.

5. Maritime Safety Information (MSI)

5.1. Existing Infrastructure for Transmission

Within the framework of the World-Wide Navigational Warning Service (WWNWS), the Russian Federation collects and makes available to mariners information on changes in sailing conditions and regime of navigation, including:

- for WWNWS Area 13 in the form of warnings, NAVAREA XIII;
- for WWNWS Areas 20 and 21 in the form of warnings, NAVAREAs XX and XXI;
- for broadcasting areas of coastal warnings in the form of Coastal Warnings for Areas of ARKHANGEL'SK, ASTRAKHAN', VLADIVOSTOK, KALININGRAD, MURMANSK, NOVOROSSIYSK, PETERBURG, PETROPAVLOVSK, EAST (Eastern Part of the Northern Sea Route), WEST (Western Part of the Northern Sea Route).

5.2. Promulgation of Navigational Warnings in the Baltic Region.

The Russian Federation is one of the nine Coastal States of the Baltic Sea, serving as national coordinators with promulgation of maritime safety information in the Baltic Sea Area (Coordinator of the Sub-Area within the NAVAREA I is Sweden).

MSI broadcasting is carried out by National Hydrographic Service for two areas of coastal warnings:

- CW PETERBURG Area (Eastern Part of the Gulf of Finland);



- CW KALININGRAD Area (South-Eastern Part of the Baltic Sea);
Russia has no Baltic NAVTEX stations. Transmission of Russian CWs within NAVTEX System is performed:
- for CW PETERBURG by Tallinn Station (Estonia);
- for CW KALINGRAD by Gislövshammar Station (Sweden).

Number of Announced Coastal Warnings for Three Years

Table 5

CW Area	2009	2010	2011
CW PETERBURG	313	309	355
CW KALININGRAD	164	164	183

There are electronic versions of Notices to Mariners and NAVAREA Warning Bulletins at the official website of the Ministry of Defense of the Russian Federation in pdf format:

<http://structure.mil.ru/structure/forces/hydrographic/info/notices.htm>

6. Standard S-55.

The latest updates (Tables)

Water Area of Russia - 23460 km² Area with depth < 200 m - 23460 km²

Water Area of Gulf of Finland - 11990 km²

Water Area of Southern Part of Baltic Sea - 11470 km²

Table 6

Depth range	Adequate survey %	Repeated survey is needed %	No systematic survey %
Depths < 200 m	99.7	0.3	-
Depths > 200 m	-	-	-

7. Capacity-building.

No information to include in the report.

8. Oceanographic Activities.

No information to include in the report.

9. Other Activities.

No information to include in the report.

10. Conclusion.

The present report reflects activity results of the Hydrographic Service of the Russian Federation for the period since the last meeting of the Commission.

Contacts:

telephone/fax: +7 812 323 75 48

fax: +7 812 323 70 29

e-mail: main@gunio.ru

navarea13@gunio.ru

website: <http://structure.mil.ru/structure/forces/hydrographic/about.htm> (NtMs are available in English)

address: 8, 11 Liniya, St.-Petersburg, 199034