

Maritime Administration of Latvia
Hydrographic Service
National Report to Baltic Sea Hydrographic Commission
2013

Executive summary

The Report gives an overview of the main activities of Latvian Hydrographic Service from August 2012 to August 2013.

Highlights:

- Surveys on HELCOM carried out in area of 275 km² ;
- Additional to adequate ENC coverage one small port ENC has been added to chart portfolio;
- HS POD service continuously improves;
- New edition of Leisure Craft Charts;
- New special paper chart - gift for The Tall Ships Races 2013 participants;
- Increasing interest in HS ENC and Hydrographic data;

1. Hydrographic Office / Service:

Hydrographic Service (HS) is one of the Departments of the Maritime Administration of Latvia (MAL). MAL is civil organisation and is under the supervision of Ministry of Transport. To optimise resources and improve operational processes Maritime Administration of Latvia has a status of a State Stock Company.

HS consists of three divisions:

- Hydrography Division;
- Cartographic Division;
- Aids to Navigation Division.

Division of Aids to Navigation is responsible for Maritime Safety Information, NtMs, Control of Aids to Navigations in Latvian waters.

2. Surveys.

Coverage of new surveys.

Status of hydrographic data of all navigable waters, including internal waters, out to the limits of the EEZ:

| | A | B | C |
|---------------|------------------|-----------------|-----------------|
| Depths < 200m | 45.9 (Aug. 2013) | 12.1 (Aug 2013) | 42.0 (Aug 2013) |
| Depths > 200m | 0 (2013) | 35 (2013) | 100 (2013) |

Survey coverage, where: A = percentage which is adequately surveyed; B = percentage which requires re-survey at larger scale or to modern standards; C = percentage which has never been systematically surveyed.

Hydrographic surveys.

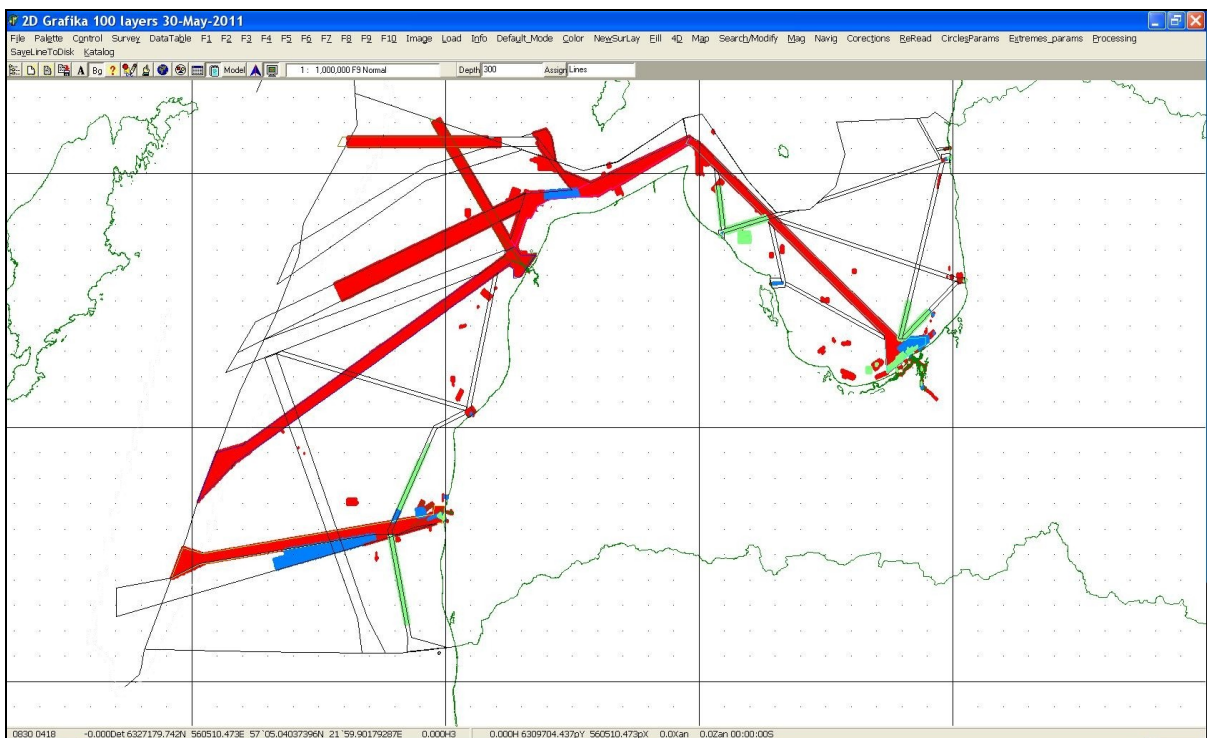
In **2012** hydrographic survey in Latvian waters was carried out as follows:

- 300 km² - on HELCOM routes in Gulf of Riga, the Estern Baltic (Liepaja) and Irbe strait (CAT II);
- 8 km²- harbour areas

In **2013** (Aug) hydrographic survey in Latvian waters was carried out as follows:

- 275 km² - on HELCOM routes in Gulf of Riga, the Estern Baltic (Liepaja) (CAT II);
- 4 km²- Harbour areas

All surveys were carried out according the IHO S-44 standards.



Surveyed areas: 2001 to 2011- red, 2012-blue, 2013-green.

Survey vessels

The Hydrography Division (10 employees) deals with surveying (data collecting and post-processing).

For surveys the following hydrographic vessels are used:

- “Kristiāns Dāls” - 19 m twin hull survey vessel;
- “Blessor 505” – 5 m single-hull survey-boat on rivers, port and shallow coastal areas;

Detailed information regarding hydrographic vessels can be found in Annex 1.

3. New charts & updates.

Status of nautical charting within the limits of the EEZ:

| Purpose/Scale | A | B | C |
|---|-----|---|-----|
| Offshore passage/Small | - | - | - |
| Landfall and Coastal passage/Medium | 100 | 0 | 100 |
| Approaches and Ports/Large | 100 | 0 | 100 |
| Percentage of Group A showing depths in metres | 100 | | |
| Percentage of Group A referenced to a satellite datum | 100 | | |

Coverage of charts, where: A = percentage covered by INT series, or a paper chart series meeting the standards in S-4; B = percentage covered by Raster Navigational Charts (RNCs) meeting the standards in S-61; C = percentage covered by ENC's meeting the standards in S-57.

Amplifying notes: Latvia has no offshore passage / small scale charts.

Detailed information on Chart and ENC coverage can be found in Annex 2.

ENCs.

Total: 23 ENC cells in navigational purpose bands 2 to 6. Additional to adequate ENC coverage, the ENC "Port of Kuivizi" has been compiled and added to chart portfolio. ENC's are updated on a monthly basis with possible maintenance and new editions in between. Temporary (T) and preliminary (P) notices to mariners, when possible to encode, are also compiled into ENC's.

ENC distribution method.

ENC Distribution Agreements with PRIMAR (BA with Norwegian HS), Transas DataCo Ltd, Jeppesen.

ENC Derivation Agreements with various companies, including Garmin,

RNCs.

Not produced.

INT charts.

13 of LV national charts are included in INT Series.

National paper charts.

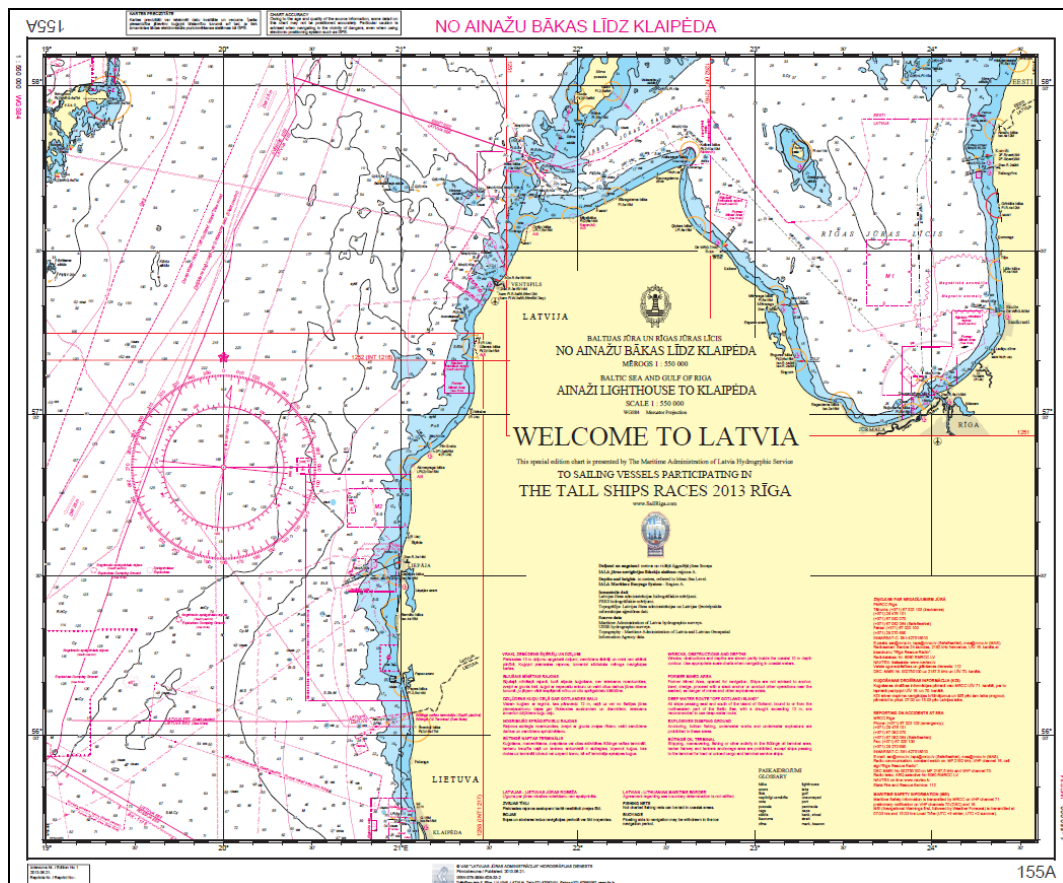
There are 22 nautical charts, produced in accordance to international standards.

Not all HS portfolio paper charts have been transferred to POD service yet. 82% of paper charts are updated digitally and available through POD service.

Other charts.

In May 2013 new edition of "Leisure Craft Charts. Baltic Sea, Latvia" was issued. This edition includes Klaipeda (Lithuania) and Ruhnu (Estonia) port charts and information on services with cooperation with Lithuanian and Estonian HO. These charts are not updated with NtMs.

Special navigational gift - chart "155A Ainaži Lighthouse to Klaipēda" (format A1) was prepared and issued in July 2013 for the participants of The Tall Ships Races 2013 Rīga.



Paper chart for the participants of The Tall Ships Races 2013 Rīga.

Problems encountered.

Nothing to report.

4. New publications & updates.

New Publications.

"INT 1" publication in Latvian language is planned to be issued in spring 2014.

Updated publications.

"Pilot of Baltic Sea. Latvian coast" second edition is planned for the end of 2013.

Updated List of Aids to Navigation is updated and maintained on monthly basis, available free of charge, digital online publication only. Publication is available in PDF format: <http://www.lhd.lv/ATONLV/index.php>.

Means of delivery.

- "Pilot of Baltic Sea. Latvian coast" - Printed book;
- "List of Aids to Navigation" - PDF online;
- "Notices to Mariners" - PDF online.

Problems encountered.

Nothing to report.

5. MSI.

Existing infrastructure for transmission.

National GMDSS VHF network along coastline for local Navigational Warnings. Service is provided by Latvian Naval Forces Coast Guard Service - Maritime Search and Rescue Coordination Centre (MRCC) twice per day in English and Latvian.

NAVAREA 1 Baltic sea Sub-Area Co-ordinator Sweden is responsible for NAVTEX Service over Latvian waters and messages are transmitted by Swedish and/or Estonian transmitters.

Notices to Mariners are published every month, Shipping Regulations at the beginning of every calendar Year, List of AtoNs updated and published monthly at: <http://www.lhd.lv/ATONLV/>.

New infrastructure in accordance with GMDSS Master Plan.

Nothing to report.

Problems encountered.

Nothing to report

6. C-55.

IHO will be informed on updates shortly. Last updated on September 2009.

7. Capacity Building.

Recently HS received training for one cartographer through IHO Capacity Building, provided by UKHO. There is still need to have Cat B, Cat A and basic training for cartographers.

Shallow MBES, data processing, survey planning would be necessary.

8. Other activities.

Participation in IHO Working Groups.

HS is represented in all the working groups under BSHC.

HS is also participating in MSDIWG and CSPCWG under the HSSC and in CBSC under the IRCC.

Meteorological data collection.

Meteorological data collection is responsibility of other institution.

Geospatial studies.

HS recognises the need of ENC and Hydrographic data in National and International activities other than navigation, therefore investigates the possible ways to reorganize the structure and flow of hydrographic and other marine data, the result of which to be presented in web based service.

HS is following IHO activities and also is engaged in National activities introducing INSPIRE, Marine planning, and National Geoportal.

On the web.

AtoN database, NtMs, List of AtoNs is available on the Internet: <http://www.lhd.lv>.

Production of MAL, including HS, is now also available to overview and to purchase online at <http://www.lja.lv/mapshop>.

Annex 1

Detailed information regarding hydrographic vessels.

Vessel KRISTIĀNS DĀLS.



MMSI: 275027000

Call sign: YLAD

Home port: Riga, reg.Nr. 0123

Twin-hull Al 19.8x6.7x1.3; GT 33t; DWT 9t

Engine: 2x165kW IVECO, aux.: NANNI DIESEL 4.220 20 Kw

Speed: 11 knots

Crew: 4

Autonomy: 3 days

Built: 2001, FINLAND UUDENKAUPUNGIN TYOVENE OY.

Nav. equipment: Furuno FRS 1000 - radar/plotter/sounder , KVH QUADRO - Compass, Furuno VHF FM 8500 - radiotelephone

Survey equipment: Reson SeaBat 7101 multibeam echosounder, Hemisphere Crescent VS110 GPS compass, Octans EM 1000 motion sensor, SVP-14 sound velocity probe

Motorboat BLESSER 505 WA.



Home port: Riga; reg.Nr.: LV-7323

Mono - hull plastic; 5.05m x 2.40m x 0.40m

Engine: 2 x 50HP Suzuki; aux: Honda 0.9kW

Speed: 16 knots

Crew: 2+1

Autonomy: 1 day

Survey equipment: Reson HYDROBAT multibeam or Deso Atlas 15 singlebeam; positioning system TRIMBLE SPS 461 or Hemisphere Crescent VS110 GPS compass; Sound velocity probe SVP-15

New technologies and equipment.

Nothing to report.

New ships.

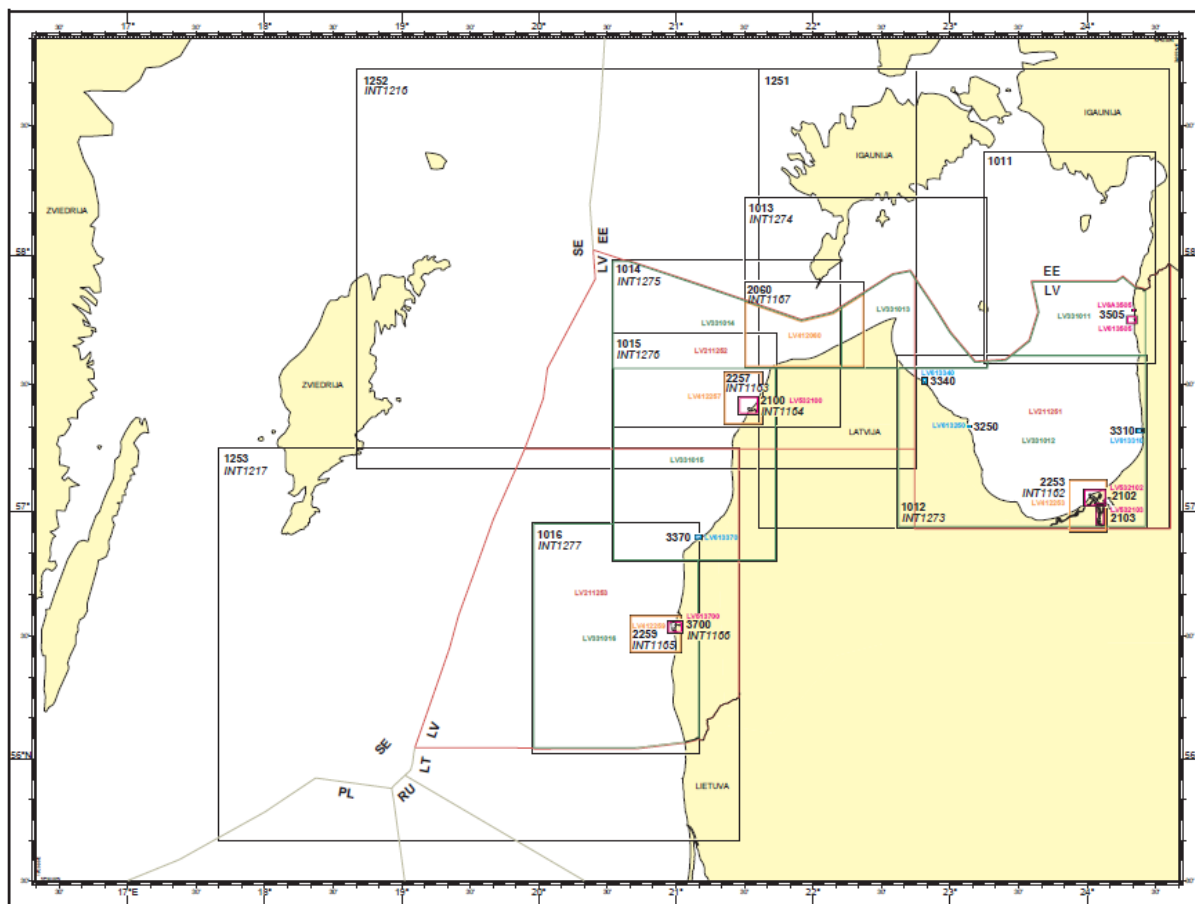
Nothing to report.

Problems encountered.

Nothing to report.

Annex 2

Paper Chart and ENC coverage.



ENC and Paper Chart Catalogue can be found online: <http://www.lja.lv/index.php?action=739>.

Paper charts and other publications can be obtained at: <http://www.lja.lv/mapshop>.