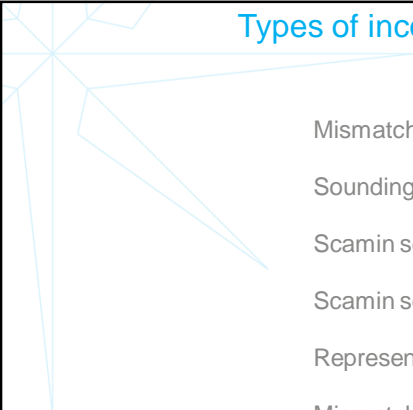



The Swedish and Finnish working group
for harmonizing depth information in
neighboring ENC's



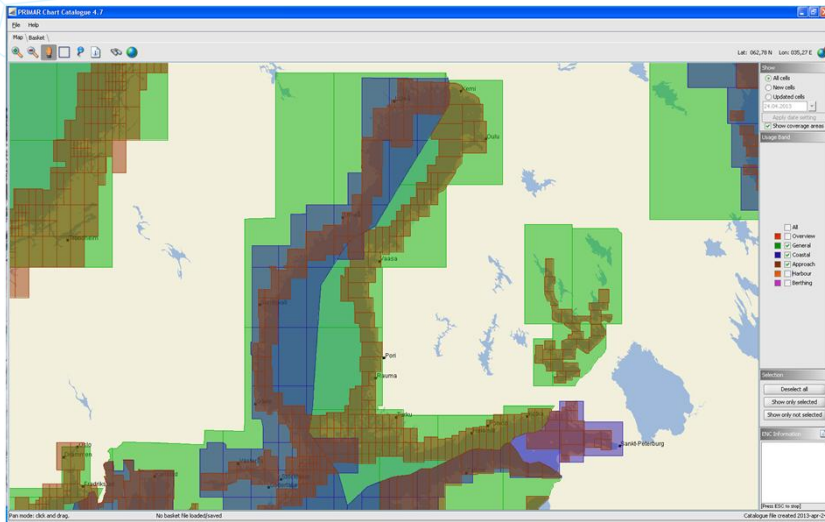
Types of inconsistencies identified

- Mismatch of Navigational Purposes
- Sounding density
- Scamin settings on soundings
- Scamin settings on depth contours
- Representation of depressions
- Mismatch of depth contours
- Generalization of depth contours
- Non equivalent depth contours
- Rounding of soundings



SJÖFARTSVERKET

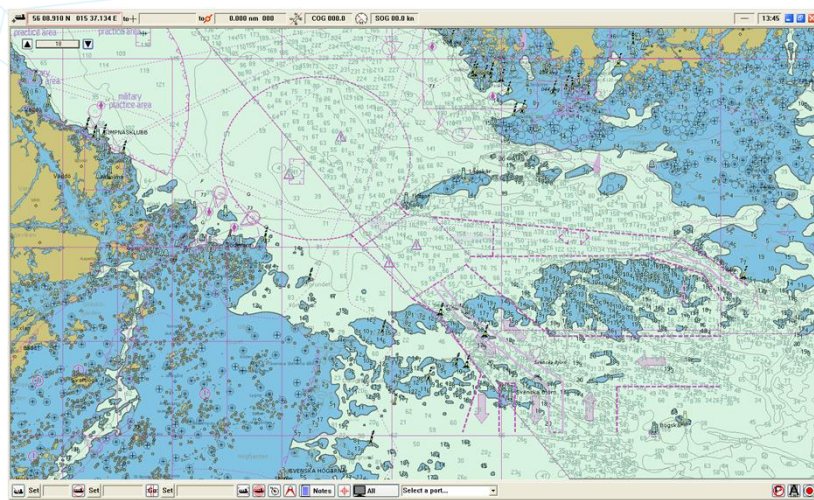
Mismatch of Navigational Purposes



There are no Finnish ENC's in Navigational Purpose Coastal



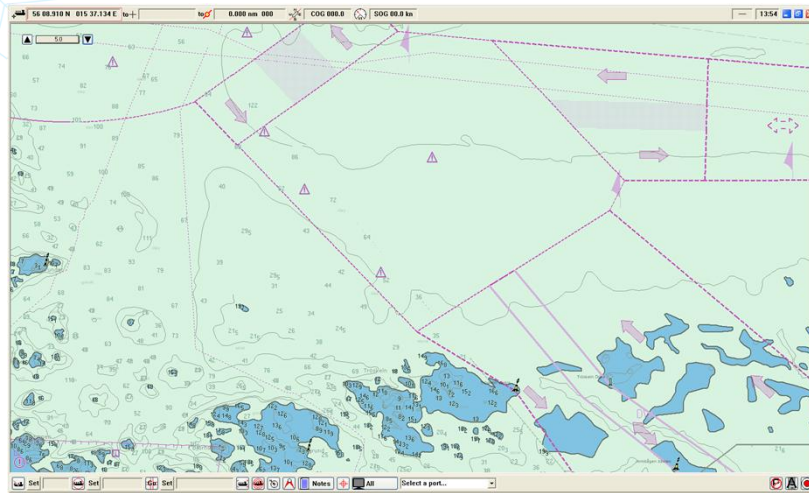
Sounding density



More dense soundings on Finnish side of the border Coastal



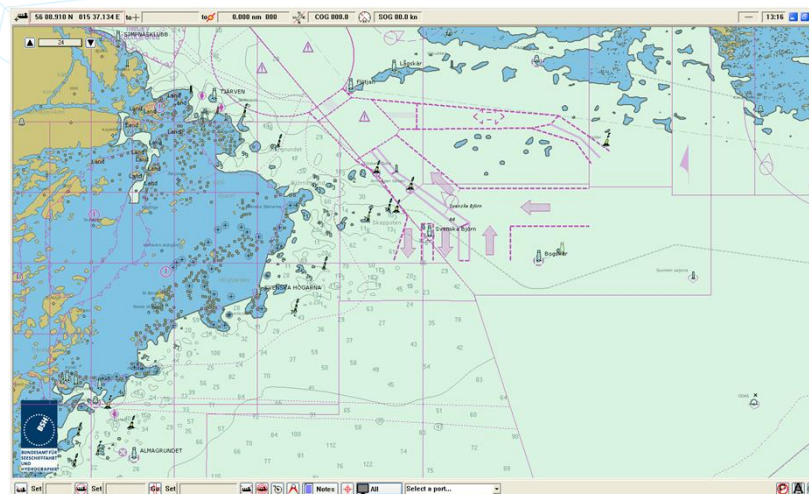
Scamin settings on soundings



Scamin on Soundings 5100/FI and 89999/SE
Approach



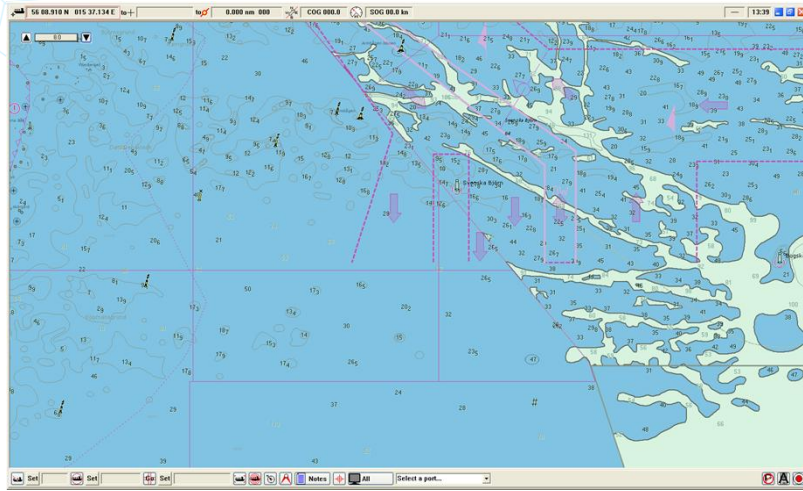
Scamin settings on depth contours



Scamin set on Finnish depth contours (34999)
General



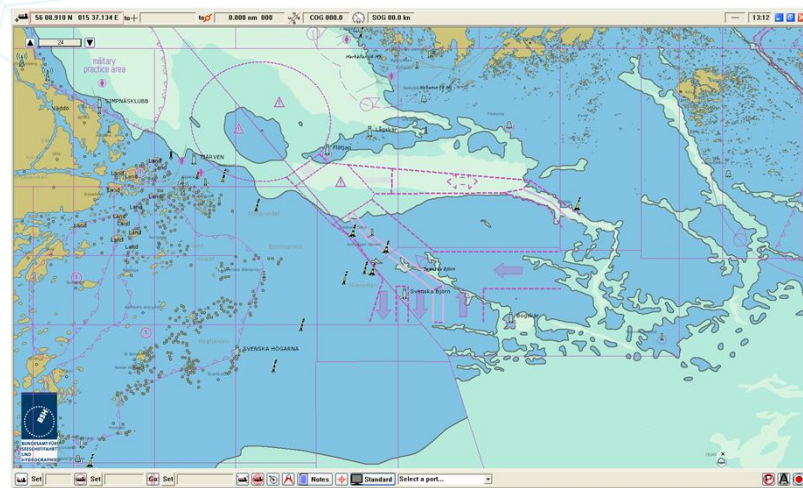
Representation of depressions



No Swedish 50 m depth contour in area south of TSS Coastal



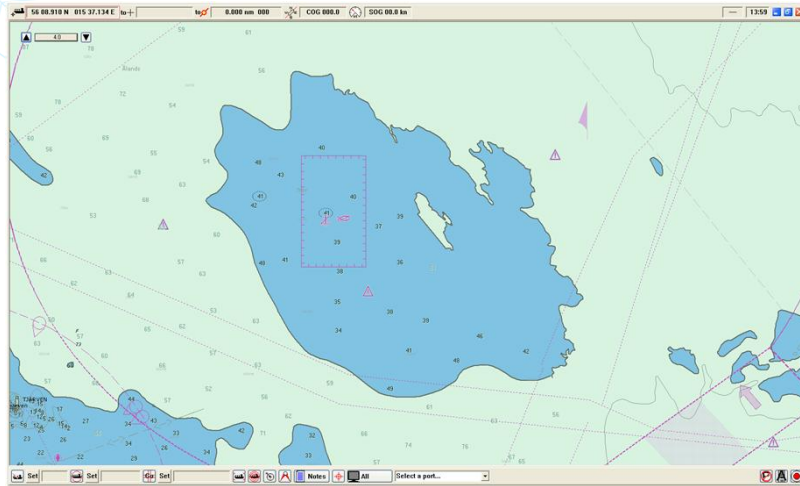
Mismatch of depth contours



Mismatch of 50 m depth contour
General



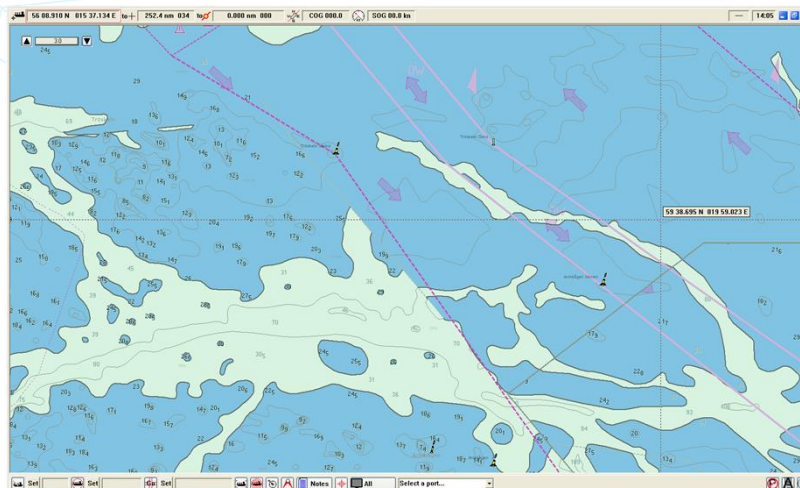
Generalization of depth contours



More detailed depth contours on the Finnish side of the border
Approach



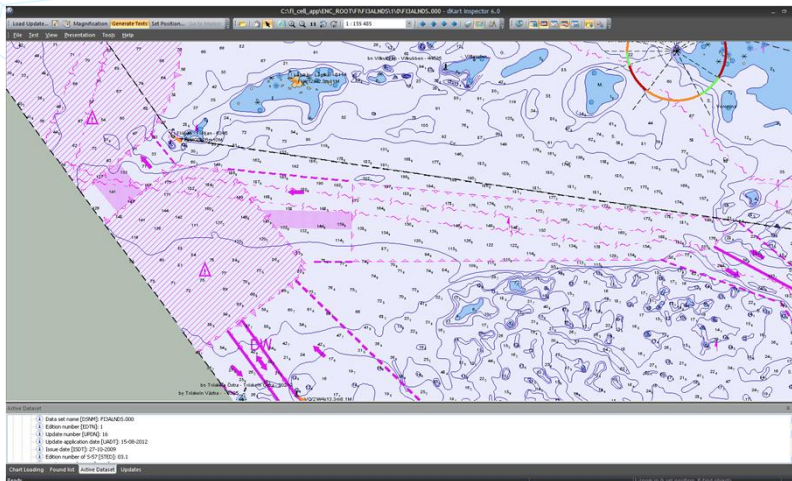
Non equivalent depth contours



No Finnish 30 m depth contour
Approach



Rounding of soundings



The soundings in the Finnish ENC's have decimeters beyond 20 m.
 In ECDIS soundings are rounded to nearest meter beyond 31 m.
 Coastal

