

10<sup>th</sup> EAthC-CHAthO MEETING  
LOMÉ, TOGO 3, 4 & 5 December 2008

**CAPACITY BUILDING**

**Element 2.1 Capacity Building Management**

**Task 2.1.1 IHO Capacity Building Committee (IHOCBC)**

**Terms of Reference**

The IHO Capacity Building Committee shall:

Continuously assess the hydrographic surveying, nautical charting and information status.  
Cooperate with the IHB in the establishment of relations with funding/donor agencies.  
Cooperate with RHC in the creation of Study Teams to carry out assessment studies.  
Support the IHB in follow-up actions aiming at identifying ideas for projects development.  
Co-operate with IHB in the provision of advice to all maritime nations requesting support.  
Give support to the IHB in drafting and keeping updated the WP 2 "Capacity Building".

**Membership**

Actually the following 14 countries have nominated representatives:

Australia, Brazil (MACHC and SWATHC), Chile (SEPHC), France, Germany, India (NIOHC), Japan, Mexico, Mozambique, Norway, Rep. of Korea, South Africa (SAIHC), USA, UK.

**IMPORTANT COMMENT ON REPRESENTATION**

**Meetings**

Annually (May or very early June, to comply with IHO WP&Budget decision process).

**Task 2.1.2 Capacity Building Fund (CBFund)**

The Capacity Building Fund is to be used in the following four main streams:

**Technical Assistance**

*Concept:* These funds will support technical visits to Member States to assess hydrographic surveying, nautical charting and nautical information status; provide guidelines for the development of local hydrographic capabilities and/or to discuss and advise on technical matters pertaining to hydrographic projects. The technical visits to Non Member States are also considered under this concept. In brief, the resources under this topic are to be used to implement visits and related capacity building activities **consistent with the IHO Work Programme.**

## **Training and Education**

*Concept:* These funds will support the implementation of hydrographic, nautical cartography and other related training and education initiatives **consistent with the IHO Work Programme.**

## **Financial Assistance**

*Concept:* These funds will support Member States' representatives to attend courses and/or technical meetings as necessary in the interest of the Organization, **consistent with the IHO Work Programme.**

## **Start-up Projects**

*Concept:* These funds will support the very first steps of the implementation of high priority hydro-cartographic projects **consistent with the IHO objectives.**

2005 and 2007 resources came from savings in the IHB operations plus contribution received from Chile and Republic of Korea.

2008 and on, resources have come from regular IHO Budget plus Republic of Korea contribution.

An average of 60.000 euros were available annually for the period 2005 - 2007 and 130.000 euros annually for the present period.

Also we need to consider and highlight the substantial support in kind from several IHO MSs to the IHO CB effort.

### **Task 2.1.3 Meetings with other organizations, funding agencies, private sector and academia.**

Coordination meetings with IMO, IOC and WMO (Marine component).

Relations with the private sector and the academia. (Participation at RHCs conferences, workshops and seminars)

Relations with funding agencies (NF) & (EC)

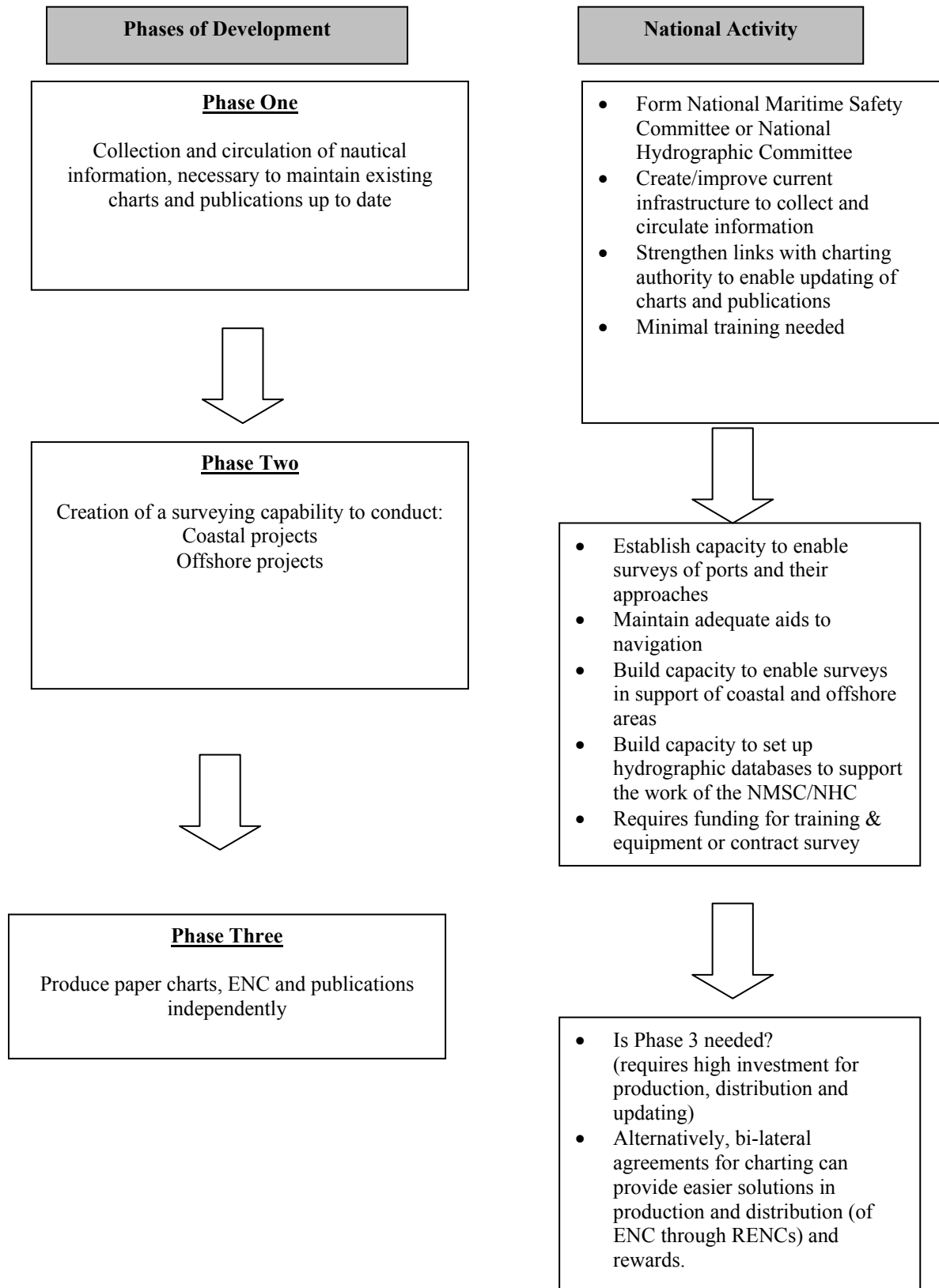
### **Task 2.1.4 IHO Capacity Building Strategy**

CB strategy is built around 4 STEPS:

- **Awareness**
- **Assessment**
- **Analysis and**
- **Action.**

Also follows the following three phases:

**PHASES OF DEVELOPMENT OF HYDROGRAPHIC SURVEYING AND NAUTICAL CHARTING**  
**CAPABILITY**



**Task 2.1.5 Capacity Building Work Program (CBWP)**

2005 – 2007            BASED ON IHB RECORDS  
2008 – 2012            BASED ON INPUT FROM RHCs

ANNUALLY            CBC REVIEWS THE PROGRAM IN THE LIGHT OF PROGRESS  
AND INPUT RECEIVED FROM RHCs, SUGGESTING SLIGHT  
CHANGES TO THE PROGRAM? BUT NOT TO THE BUDGET  
ALLOCATED

REPORTS BACK TO RHC ON ON-GOING, UPDATED,  
APPROVED, REJECTED AND PLANED ACTIVITIES

THE EXECUTION OF THE PROGRAM IS TRUSTED TO RHCs.

**SEE EXAMPLE OF LETTER SENT TO RHC.**

**Task 2.1.6 Follow-up of CB activities and initiatives.**

PROCEDURES ARE NEEDED AND CBC IS WORKING ON THEM.

**SEE PROCEDURE 1 AND 2**

## **Element 2.2 Capacity Building Assessment**

### **Task 2.2.1 Technical and Advisory Visits.**

2008 EAthC (Assessment to Guinea Bissau to be confirmed by EAthC) 7,500 euros

2009 nil

2010 EAthC (Follow-up Technical Visits already paid and conduct assessments)

2011 nil

2012 EAthC (Assessment)

### **Task 2.2.2 S-55 Status of Hydrographic Surveying and Nautical Charting Worldwide**

ALL MARITIME COUNTRIES ARE INVITED TO KEEP THIS DATABASE UPDATED.

### **Task 2.2.3 Assessment procedures.**

RHCs SHALL KEEP CBC INFORMED ON THE OUTCOME OF THE ACTIVITY EXECUTED. A REPORT IS EXPECTED FROM EACH EVENT.

CBC HAS PREPARED PROCEDURE 5 IN ORDER TO FACILITATE THIS PROCESS.

## **Element 2.3 Capacity Building Provision**

### **Task 2.3.1 Raise Awareness on the Importance of Hydrography.**

THIS IS AN IHO GENERAL AND PERMANENT ACTIVITY.

TO REINFORCE THIS MATTER IHB ISSUED IN SEPTEMBER 2008 CL 72 “RAISING GOVERNMENT AWARENESS OF HYDROGRAPHY”

“ the Directing Committee is always available to approach relevant authorities, including at senior governmental levels using appropriate diplomatic, intergovernmental or other points of contact, where individual national Hydrographers consider that this will help them in raising the levels of awareness and commitment to provide appropriate hydrographic services in their countries. “

### **Task 2.3.2 Technical Workshops, Seminars, Short Courses.**

2008: Basic Practical Hydrographic Survey Course (EAtHC) 15,000 euros

2009: MSI Technical Training Course (EAtHC) 15,000 euros

2010 nil

2011 Workshop on Port and Shallow Water surveys, S-44 (EAtHC)

2012 nil

### **Task 2.3.3 Hydrographic and Nautical Cartography Courses.**

The IHB in conjunction with the IAB and the CBC to encourage the development and delivery of new Hydrographic and Nautical Cartography Programs, including the establishment of new Hydrographic Schools where that regional capacity does not exist. Report to the IHO on the results (2008, 2009 and 2010).

THIS IS WHAT THE IHB HAS BEEN DOING IN ITS RELATION WITH THE REGIONAL MARITIME UNIVERSITY, ACCRA, GHANA.

### **Task 2.3.4 On the Job Training (ashore / on board)**

SEARCHING FOR POSIBILITIES AND OPPORTUNITIES IN THIS SENSE HAS NOT BEEN INITIATED YET.

### **Task 2.3.5 Marine/Maritime Projects.**

AS IT WAS MADE CLEAR IN FRANCE’S REPORT? CHARMER INITIATIVE IS IN A DORMANT SITUATION.

### **Task 2.3.6 Bilateral agreements.**

THIS CONFERENCE HAS BEEN MADE AWARE OF THESE AGREEMENTS AND THIS APPROACH IS STRONGLY RECOMMENDED BY IHO AS A WAY TO PROGRESS IN HYDRO-CARTOGRAPHIC DEVELOPMENT.