



United Kingdom
Hydrographic Office

UK National Report

13th Eastern Atlantic Hydrographic Commission,
Casablanca, Morocco, 16-18 September 2014





United Kingdom
Hydrographic Office

Building on Success

UK activity 2012-14

- Chart production
- ENC Production
- Publications
- New Products



United Kingdom
Hydrographic Office

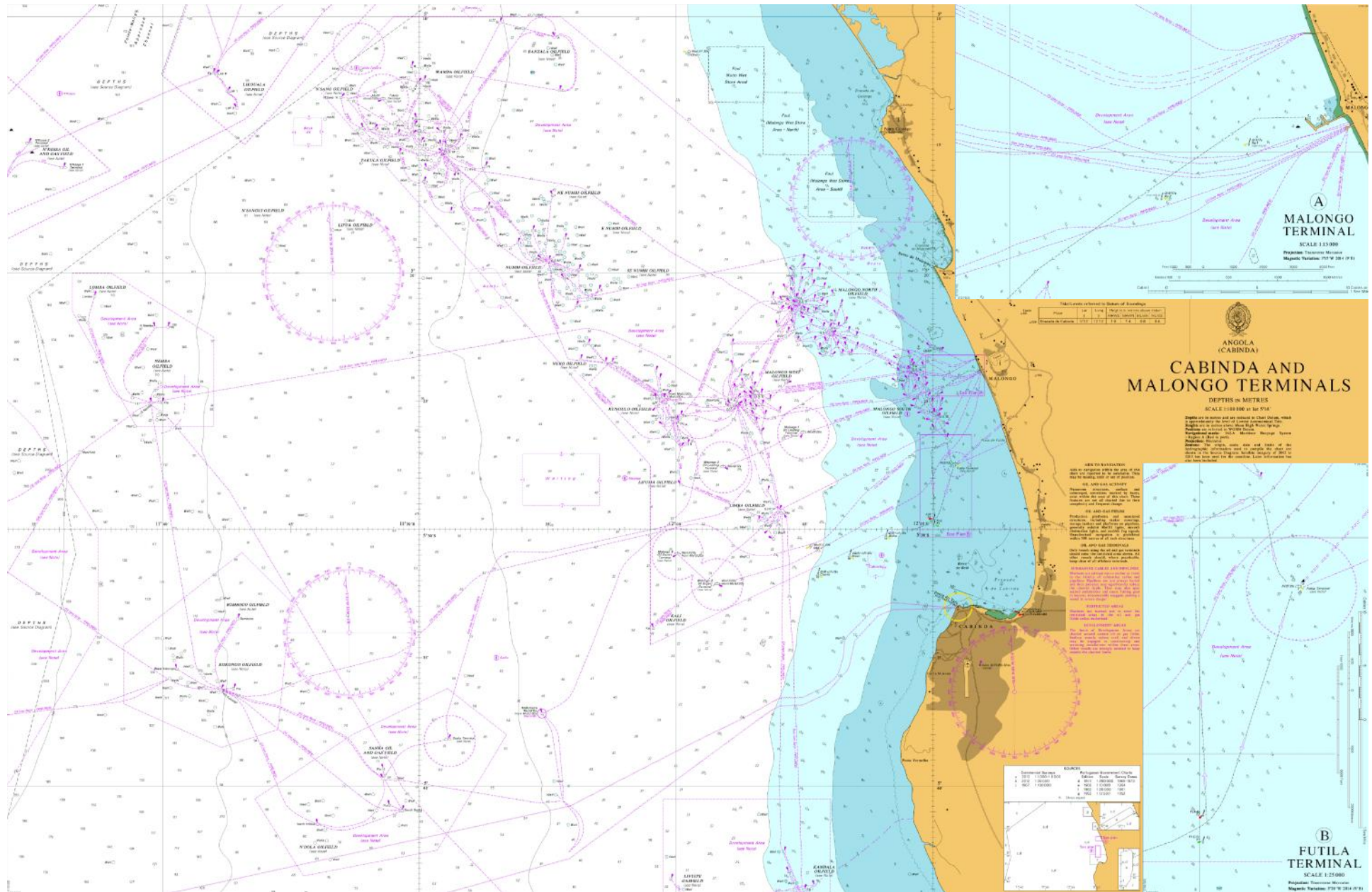
Chart Production

19 new edition charts, including 18 INT charts

1 new chart (3291)



3291 Cabinda and Malongo Terminals





United Kingdom
Hydrographic Office

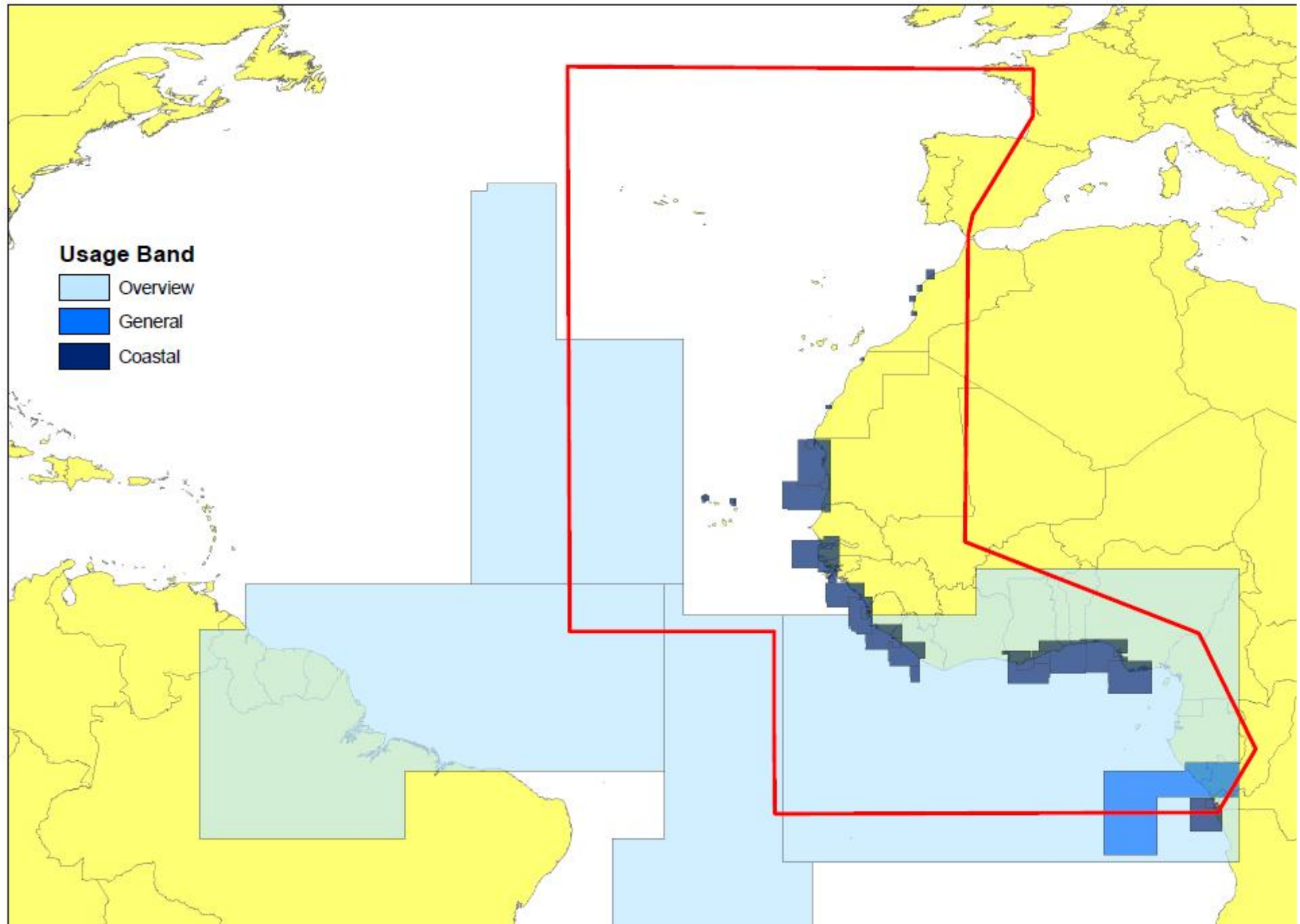
ENC Production

93 GB cells currently available in EAtHC region, coverage currently comprises:

- 4 Berthing
- 27 Harbour
- 25 Approach
- 32 Coastal
- 1 General
- 4 Overview



EAtHC - Released Overview, General and Coastal GB ENC Coverage



EAtHC - Released Approach, Harbour and Berthing GB ENC Coverage





United Kingdom
Hydrographic Office

New Products

■ **Port Approach Guide - contains information from**

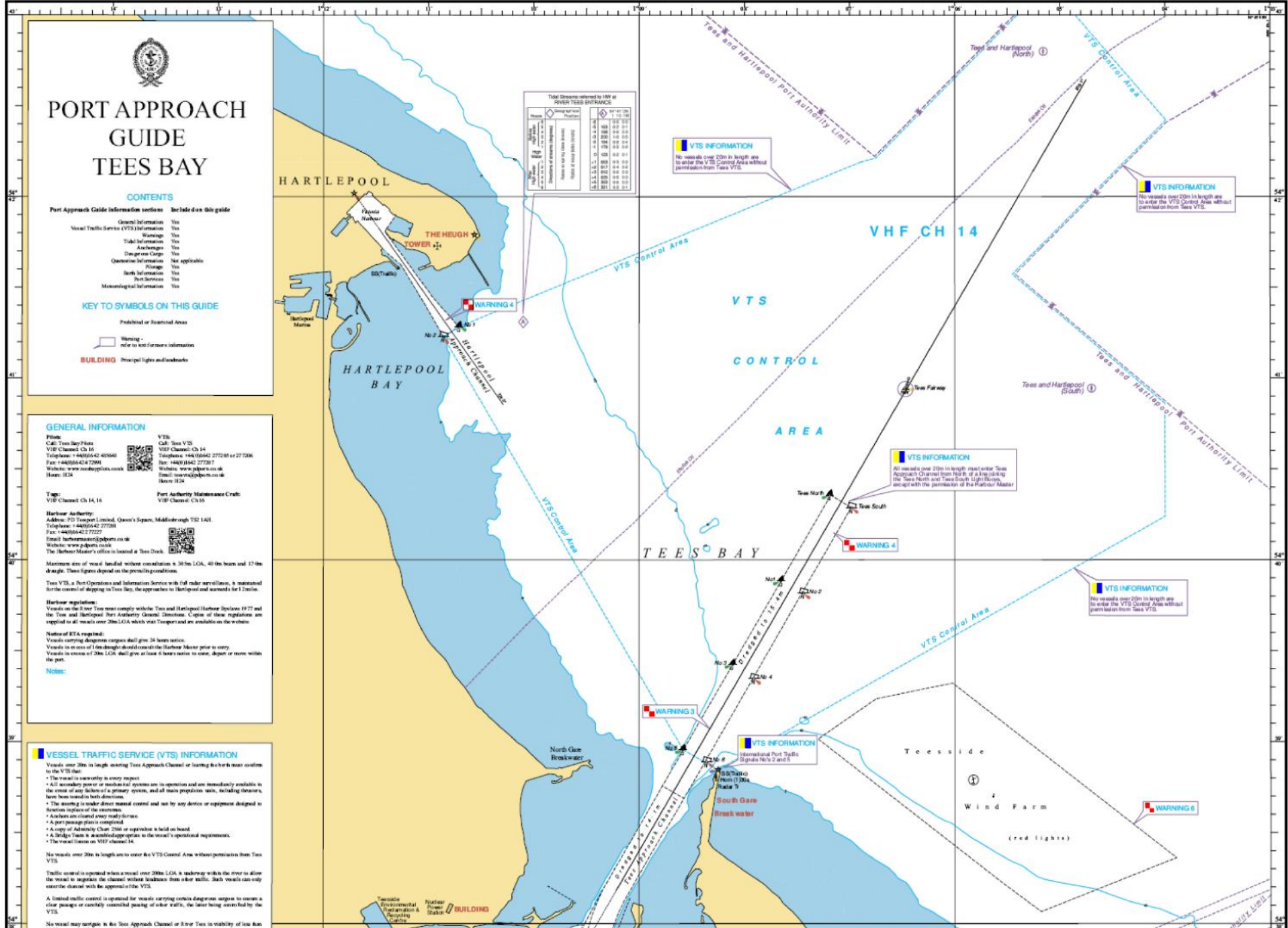
Standard navigation charts

Sailing Directions

Tidal Publications

Lights

Radio Signals



PORT APPROACH GUIDE TEES BAY

CONTENTS

Port Approach Guide information sections included on this guide

Section	Included on this guide
General Information	Yes
Vessel Traffic Service (VTS) Information	Yes
Warnings	Yes
Tidal Information	Yes
Anchorage	Yes
Discharge Cargoes	Yes
Obstruction Information	Not applicable
Beacons	Yes
Depth Information	Yes
Port Services	Yes
Meteorological Information	Yes

KEY TO SYMBOLS ON THIS GUIDE

Prohibited or Restricted Areas

Warning - refer to text for more information

BUILDING Principal lights and landmarks

GENERAL INFORMATION

Phone:
Call: Tees Bay Pilots
VHF Channel Ch 16
Telephone: +44(0)1642 405040
Fax: +44(0)1642 472904
Website: www.teesbaypilots.co.uk
Hours: 0824

VTS:
Call: Tees VTS
VHF Channel: Ch 14
Telephone: +44(0)1642 277388
Fax: +44(0)1642 277227
Text: +44(0)1642 277387
Website: www.vtsbay.co.uk
Email: teesvts@vtsbay.co.uk
Hours: 0824

Port Authority Maintenance Craft:
VHF Channel: Ch 16

Harbour Authority:
Address: PJ Transport Limited, Queen's Square, Middlesbrough TS2 1AJH
Telephone: +44(0)1642 277388
Fax: +44(0)1642 277227
Email: harbourmaster@pjbports.co.uk
Website: www.pjbports.co.uk
The Harbour Master's office is based at Tees Dock

Maximum size of vessel handled without consultation = 30 ftm LOA, 40 ftm beam and 17 ftm draught. These figures depend on the prevailing conditions.

Tees VTS, a Port Operations and Information Service with full radar surveillance, is maintained for the control of shipping in Tees Bay, the approaches to Hartlepool and warnings for 12 miles.

Harbour regulations:
Vessels on the River Tees must comply with the Tees and Hartlepool Harbour Rules 1977 and the Tees and Hartlepool Port Authority General Directions. Copies of these regulations are supplied to all vessels over 20m LOA which visit Teesport and are available on the website.

Notice of RTA required:
Vessels carrying dangerous cargoes shall give 36 hours notice.
Vessels in excess of 10m draught should contact the Harbour Master prior to entry.
Vessels in excess of 20m LOA shall give at least 4 hours notice to enter, depart or move within the port.

Notes:

VESSEL TRAFFIC SERVICE (VTS) INFORMATION

Vessels over 20m in length entering Tees Approach Channel or leaving Tees Harbour must comply to the VTS that:

- The vessel is seaworthy in every respect
- All necessary power or mechanical systems are in operation and are immediately available in the event of any failure of a primary system, and all main propulsion units, including direction, have been tested in both directions
- The steering is under direct manual control and not by any device or equipment designed to automate operation of the steerman
- Anchor is/are cleared away ready to stow
- A port passage plan is completed
- A copy of Admiralty Chart 2864 or equivalent is held on board
- A bridge team is manning the vessel in accordance with the vessel's operational requirements
- The vessel complies with VTS channel 14

No vessels over 20m in length are to enter the VTS Control Area without permission from Tees VTS.

Traffic control is operated when a vessel over 20m LOA is underway within the river to allow the vessel to negotiate the channel without hindrance from other traffic. Such vessels can only overtake inshore with the approval of the VTS.

A limited traffic control is operated for vessels carrying certain dangerous cargoes to ensure a clear passage or carefully controlled passage of other vessels, the latter being controlled by the VTS.

No vessel may anchor in the Tees Approach Channel or River Tees in violation of the VTS.

Tide Streams referred to LRY or SEVER TIDES ENTRANCE

Direction	Speed (knots)	Direction	Speed (knots)
N	0.0	E	0.0
NE	0.1	SE	0.1
E	0.2	S	0.2
SE	0.3	SW	0.3
S	0.4	W	0.4
SW	0.5	W	0.5
W	0.6	W	0.6
W	0.7	W	0.7
W	0.8	W	0.8
W	0.9	W	0.9
W	1.0	W	1.0
W	1.1	W	1.1
W	1.2	W	1.2
W	1.3	W	1.3
W	1.4	W	1.4
W	1.5	W	1.5
W	1.6	W	1.6
W	1.7	W	1.7
W	1.8	W	1.8
W	1.9	W	1.9
W	2.0	W	2.0

VTS INFORMATION
No vessels over 20m in length are to enter the VTS Control Area without permission from Tees VTS.

VTS INFORMATION
No vessels over 20m in length are to enter the VTS Control Area without permission from Tees VTS.

VTS INFORMATION
No vessels over 20m in length are to enter the Tees Approach Channel from North of a line joining the Tees North and Tees South Light Buoys, except with the permission of the Harbour Master.

VTS INFORMATION
No vessels over 20m in length are to enter the VTS Control Area without permission from Tees VTS.

VTS INFORMATION
International Port Traffic Signals No.2 and 5

WARNING 4
No. 2

WARNING 4
No. 2

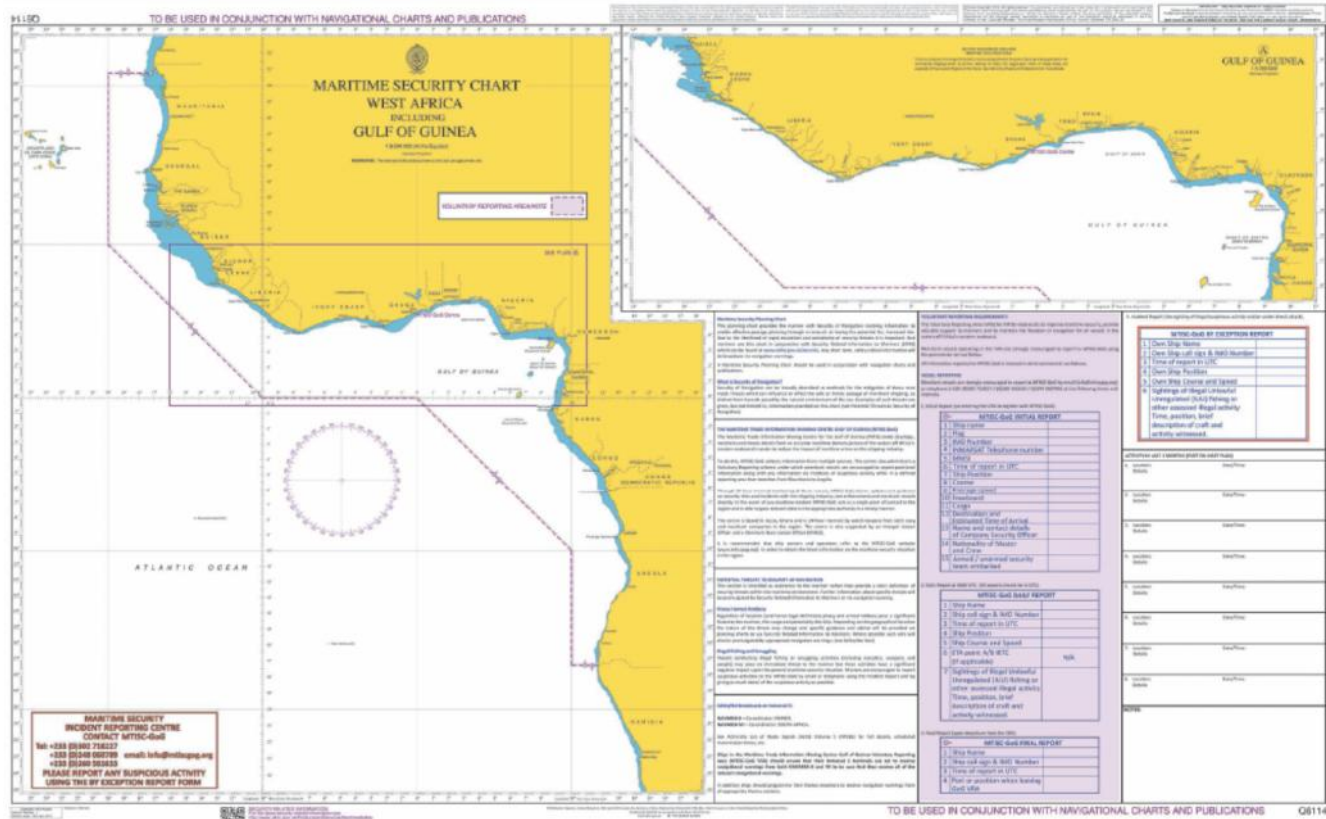
WARNING 3
No. 2

WARNING 6
No. 2



United Kingdom
Hydrographic Office

Anti-Piracy Charts





United Kingdom
Hydrographic Office

Looking Ahead

Continuing UK activity 2014-15 and beyond

- Chart Production
- Publications - Sailing Directions
Port Approach Guides
- Continuing efforts to support local data gathering initiatives, and to link these into a broad programme of prioritised chart compilations and new editions.





United Kingdom
Hydrographic Office

Questions

