

**HCA LONG TERM SURVEY PLAN**  
**Updated to September 2010**

**HCA10-08A**

**Table of MSRs, base/site calls, usage category, and current survey category**

**Note:** In the tables below, high priority surveys have been emphasized in **yellow**. Indications of planned surveys appear in **red**. Indications of surveys completed appear in **blue**.

**I. ANTARCTIC PENINSULA**

**Categories**

Category	Usage
<b>A</b>	Frequent
<b>B</b>	Regular
<b>C</b>	Infrequent

Category	Current survey status
<b>A</b>	Adequately surveyed
<b>B</b>	Requires re-survey at larger scale or to S-44 standard
<b>C</b>	Has not been systematically surveyed/Unsurveyed

**Main corridors (see diagram on last page for MSR references)**

MSR *	Name	Usage category	Survey category	Notes and INT chart coverage. Published and <i>proposed</i> .
1	James Ross Island circular route	B+C	A + C	Prince Gustav Channel & Eastern corridor 55% surveyed. 45% unsurveyed. <i>Blocks surveyed by UK 2005-07. Blocks planned by UK for future seasons.</i> INT 9153
2	Joinville Island circular route	A+B	A + C	45% surveyed (Antarctic Sound), 55% unsurveyed. <i>Blocks surveyed by UK 2005-07 and Uruguay &amp; Venezuela 2008. Blocks planned by UK for future seasons</i> INT 9154
3	Orleans Strait to Antarctic Sound	B	B + C	INT 9155
<b>4</b>	<b>Gerlache strait</b>	<b>A</b>	<b>A + C</b>	<b>96% surveyed. INT 9156 &amp; 9157 Blocks surveyed by Chile 2010 &amp; UK 2005-07 also Flandres Bay 35% surveyed</b>
5	Bismarck Strait	A+B	A + B	Approaches to Palmer Station and Port Lockroy. INT 9158. <i>Block surveyed by UK 2005-06 &amp; Chile 2010</i>
6	Lemaire Channel	A	A+B	Petermann Is, Pleneau Is, Argentine Is, Yalour Is. 65% surveyed. INT 9106. <i>Block surveyed by UK 2005-06</i>
7	Grandidier Channel	A+B	B	INT 9158 & 9159
8	Cape Garcia to Jagged Island	B	C	INT 9159
9	Crystal Sound	B	B	Numerous reports of uncharted rocks. INT 9160
10	Liard Island to Rothera	B	C	INT 9161, 9108 AND 9163
11	Marguerite Bay	C	B + C	INT 9163 & 9164
12	Woodfield Channel	C	B	INT 9163
13	Woodfield Channel to Matha Strait	B	C	INT 9162 & 9160
14	Matha Strait to Hugo Island	B	C	INT 9160, 9159 & 9158
15	Hugo Island to Low Island	B	B + C	INT 9156, 9157 & 9158
16	Low Island to Antarctic Sound	C	B + C	INT 9154, 9155 & 9156. <i>Blocks planned by UK for future seasons</i>

\* MSR = Maritime Shipping Route. The figures / letters in this column are shown on the MSR diagram which is on the last page.

17	South Shetlands MSR	A	A+C	INT 9151. SW corridor surveyed by UK, Livingstone Island to Penguin Island complete. <i>Blocks surveyed by UK 2005-10 and Brazil 2007-08</i>
17A	Deception Island circular route	A	A	INT 9120 Deception Island circular route 100% complete. <i>Blocks surveyed by UK in 2005-08</i>
18	Elephant Island MSR	A+C	A+C	INT 9150 <i>Blocks surveyed by Brazil 2006</i>
19	Elephant Island to KGI	A	C	INT 9150, INT 9151 <i>Blocks surveyed by Brazil 2005</i>
20	Deception Is to Brabant Island	A	C	INT 9120, INT 9155, 9156, 9157 <i>Blocks surveyed by UK 2005-06</i>

## **Branch corridors and approaches**

MSR	Name	Usage category	Survey category	Notes and INT chart coverage. Published and proposed
A	Marambio	B	C	INT 9100
B	Duse Bay and Eagle Island	B	C	Includes Crystal Hill. INT 9154
C	Paulet Island	A	A + C	50% surveyed, remaining area top of UKHO priority. INT 9112 <i>Blocks surveyed by UK 2005-06</i>
D	Brown Bluff and Fridtjof Sound	A	A+C	INT 9154 <i>Blocks surveyed by UK 2006-07</i> Approaches to Brown Bluff complete up to 50m contour
E	Hope Bay	A	A	INT 9101. 95% complete. <i>Blocks surveyed by UK 2006-07 and Uruguay 2008</i>
F	Gourdin Island and Siffrey Point	B	C	INT 9154
G	Bernado O' Higgins and approaches	C	C	INT 9102
H	Curtiss Bay	C	C	INT 9155 & 9156
I	Hydrurga Rocks	B	C	INT 9156 & 9157
J	Alcock Island	C	C	INT 9156 & 9157
K	Portal Point	C	A+C	INT 9112 <i>Charlotte Bay surveyed by UK 85% complete.</i>
L	Enterprise Island	B	C	INT 9157
M	Melchior Islands and approaches	A+C	A+C	INT 9157 <i>Blocks surveyed by UK 2005-06</i>
N	Errera Channel	A	A+C	Includes Cuverville Is, Danco Is and Ronge Is. INT 9103 70% complete. <i>Blocks surveyed by UK 2005-06</i>
O	Andvord Bay	A	A+C	Includes Neko Harbour. INT 9103. 70% complete. <i>Block surveyed by UK 2005-06</i>
P	Paradise Harbour	A	A+B	Almirante Station and Waterboat Point. INT 9104. Paradise Harbour 93%, Bryde Channel 90%, Furguson Channel 80%. <i>Blocks surveyed by UK 2007-08 &amp; Chile 2010.</i>
Q	Neumayer Channel and Port Lockroy	A	A	100% complete. INT 9158 & 9104 <i>Blocks surveyed by UK 2005-06 &amp; Chile 2010</i>
R	Arthur harbour	B	C	INT 9105
S	French Passage	B	B	INT 9106
T	Prospect Point	B	C	INT 9107
U	Pendleton Strait	B	B	INT 9159
V	Matha Strait	B	C	INT 9160
W	Detaille Island and approaches	C	C	INT 9161 Detaille Island now has Historic Monument status, and following restoration will receive increased vessel traffic.
X	Lallemand Fjord	C	C	INT 9161
Y	Shumskiy Cove	C	C	INT 9108
Z	Rothera	B	A	BAS and RN vessels. INT 9109. 100% complete. <i>Blocks surveyed by UK 2007-08</i>
Aa	Avian Island	C	B	INT 9110
Ab	Approaches to Millerand Island	C	B	INT 9111

MSR	Name	Usage category	Survey category	Notes and INT chart coverage. Published and proposed
Ac	Port Foster and Neptunes Bellows	A	A+B	INT 9120 Port Foster and Whalers Bay 95% complete. Neptunes Bellows needs multibeam survey to position Ravn Rock, controlling danger in very narrow passage. <i>Blocks surveyed by UK 2005-08</i>
Ad	South bay and Hannah Point	A	A	INT 9121. <i>Block surveyed by UK in 2006-07</i>
Ae	McFarlane Strait	A	A + C	Half Moon Is cat A, Yankee Harbour 100%, McFarlane Strait 50%. INT 9121 & 9112. <i>Blocks surveyed by UK in 2005-07</i>
Af	English Strait	A	A+B	Aitcho Islands and Discovery Bay. INT 9122 & 9152. 75% complete. NE section still unsurveyed. <i>Blocks surveyed by UK in 2005-07, Ecuador in 2004 and Chile.</i>
Ag	Robert Point	C	C	INT 9151
Ah	Nelson Strait	C	A+C	INT 9151. 80% complete. <i>Block surveyed by UK in 2005-07, Blocks surveyed by Chile in 2005-08</i>
Ai	Maxwell Bay and approaches	A	A+C	Ardley Cove, Marian Cove and Potter Cove. INT 9123. 80% complete. <i>Blocks surveyed by UK in 2005-07, Potter Cove surveyed by Argentina 2005-06, Uruguay 2008</i>
Aj	Admiralty Bay	A	A	Artowski Station, Ferraz Station and Martel Inlet. INT 9125. <i>Block surveyed by UK in 2006-07, Blocks surveyed by Peru 2002-06, Block surveyed by Brazil 2007-08. Block planned by Peru 2009</i>
Ak	Penguin Island and approaches	A	A+C	Endurance 2005 survey. INT 9151 <i>Approach channel surveyed by UK 2006, 50% complete.</i>
Al	Cape Lookout	B	C	INT 9112
Am	Point Wild	A	C	INT 9150
An	Cape Valentine	B	C	INT 9150
Ao	Danger Islands	C	C	INT 9154
Ap	Dundee Island	B	A+C	INT 9154 60% <i>Blocks surveyed by UK in 2005-07, Block surveyed by Argentina in 2005-07</i>
Aq	Herbert Sound	B	A+C	INT 9153. 90% complete. <i>Blocks surveyed by UK in 2005-07</i>
Ar	Historic Monument	B	C	INT 9153
As	Freud Passage	B	C	INT 9156 & 9157
At	Booth Is, Port Charcot	B	C	INT 9158
Au	Gunnel Channel	B	C	INT 9108 & 9161
Av	Pourqoi Pas Island	C	C	INT 9163 & 9161

## II. MAINLAND ANTARCTICA\*\*

### Main corridors

MSR	Name	Usage category	Survey category	Notes and INT chart coverage. Published and proposed.
1	Hobart to Macquarie Island	C	A + B	Annual re-supply station by Aurora Australis. Tourist vessels and fishing boats Charts - Hobart AUS173 and 174 Macquarie Island – AUS604 Cape Darnley to Tasmania - INT 74 (AUS 4074)
2	Hobart to Casey station	C	A + B	Annual re-supply of station by Aurora Australis and other vessel plus occasional tourist vessels. Charts. Hobart AUS173 and 174 Casey - INT9021 (AUS601) Cape Darnley to Tasmania - INT 74 (AUS 4074)

\*\* Australian Antarctic Division Submission

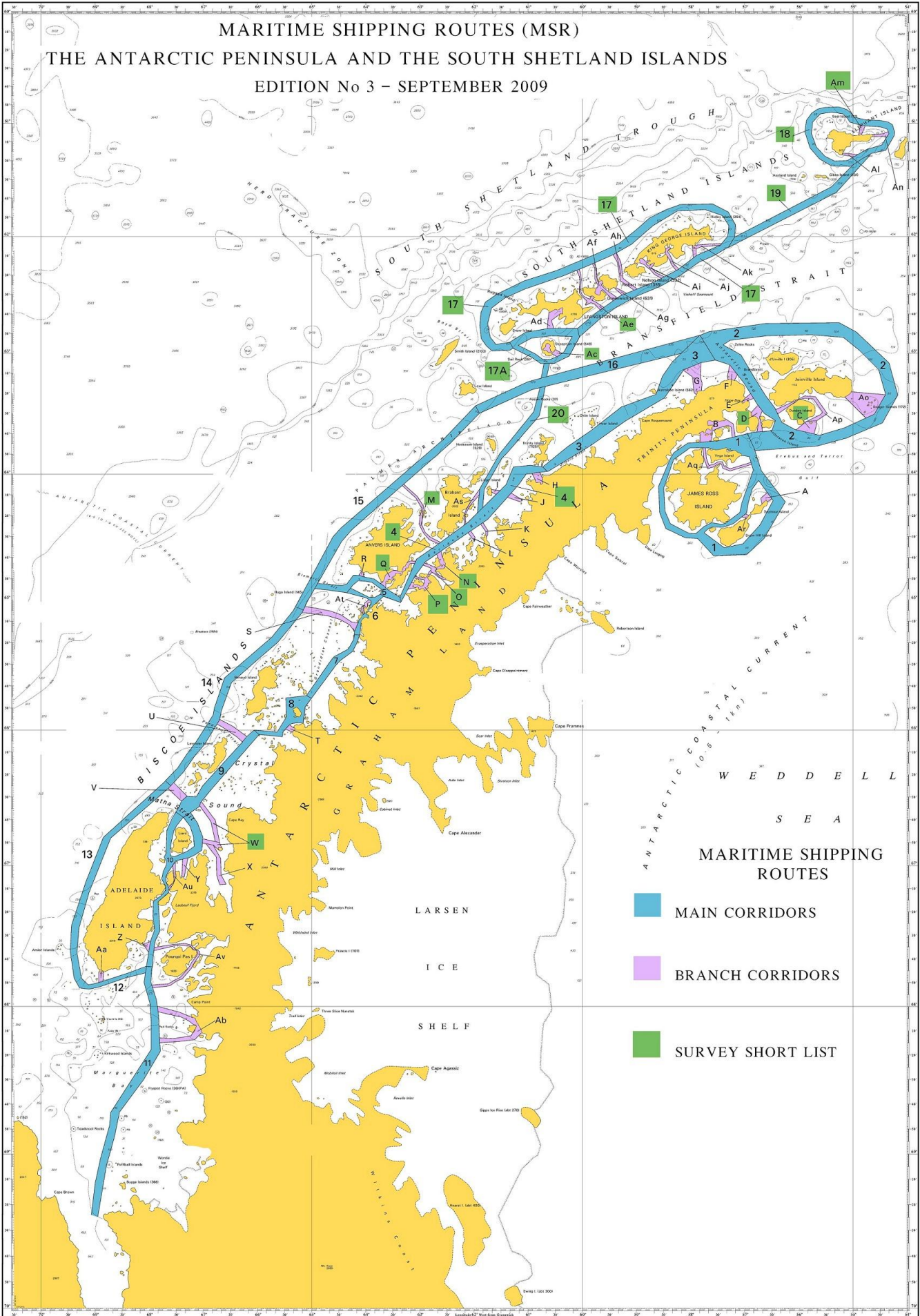
MSR	Name	Usage category	Survey category	Notes and INT chart coverage. Published and proposed.
3	Hobart to Davis	C	A + B	Annual re-supply of station by Aurora Australis and other vessel plus occasional tourist vessels Charts - Hobart AUS173 and 174 Davis – INT9032(AUS602) Cape Darnley to Tasmania - INT 74 (AUS 4074)
4	Hobart to Mawson	C	A+B	Annual re-supply of station by Aurora Australis and other vessel plus occasional tourist vessels Charts Hobart AUS173 and 174 Mawson – AUS600 Cape Darnley to Tasmania - INT 74 (AUS 4074) Magnet bay to Cape Rouse – AUS449
5	Hobart to Heard Island	C	A+C	Marine science voyage by Aurora Australis, customs patrol vessels plus occasional tourist and fishing vessels. Charts Hobart AUS173 and 174 Heard Island – AUS605 Cape Darnley to Tasmania - INT 74 (AUS 4074) Magnet bay to Cape Rouse – AUS449
6	Fremantle to Heard Island	C	A+C	Marine science voyage by Aurora Australis, customs patrol vessels plus occasional tourist and fishing vessels.
7	Hobart to Commonwealth Bay	C	A+C	Occasional visits by Aurora Australis, Astrolabe and occasional tourist vessels Charts - Hobart AUS173 and 174 Commonwealth Bay – AUS603
8	Davis to Larsemann Hills	C	A+C	Occasional visits by Aurora Australis, Chinese re-supply vessel Xue Long and Russian re-supply vessels. No charts exist of the approaches to the Larsemann Hills
9	Davis to Sansom Island	C	C	No chart coverage except at small scale. Sandjeford bay to cape Rundingen – AUS 452 scale 1:500,000
-	Hobart and Fremantle to Southern Ocean	C	A+C	Marine science voyages

### Branch corridors and approaches

MSR	Name	Usage category	Survey category	Notes and INT chart coverage. Published and proposed
	Macquarie Island	C	A+C	AUS604
A	Casey	C	A+C	INT9021 (AUS601)
B	Davis	C	A+C	INT9032(AUS602)
C	Mawson	C	A+C	AUS600
D	Commonwealth Bay	C	C	AUS603
8	Davis to Larsemann Hills	C	C	No chart coverage except at small scale. Sandjeford Bay to Cape Rundingen – AUS452 scale 1:500,000
9	Davis to Sansom Island	C	C	No chart coverage except at small scale Sandjeford Bay to Cape Rundingen – AUS452 scale 1:500,000



MARITIME SHIPPING ROUTES (MSR)  
 THE ANTARCTIC PENINSULA AND THE SOUTH SHETLAND ISLANDS  
 EDITION No 3 – SEPTEMBER 2009



- MARITIME SHIPPING ROUTES
- MAIN CORRIDORS
  - BRANCH CORRIDORS
  - SURVEY SHORT LIST



