



Ministerio de Defensa
Servicio de Hidrografía Naval

HCA11-07.1D

NOTA SIHN, HC4 N° 48/11.

BUENOS AIRES, 27 de septiembre de 2011.

Dear Sir,

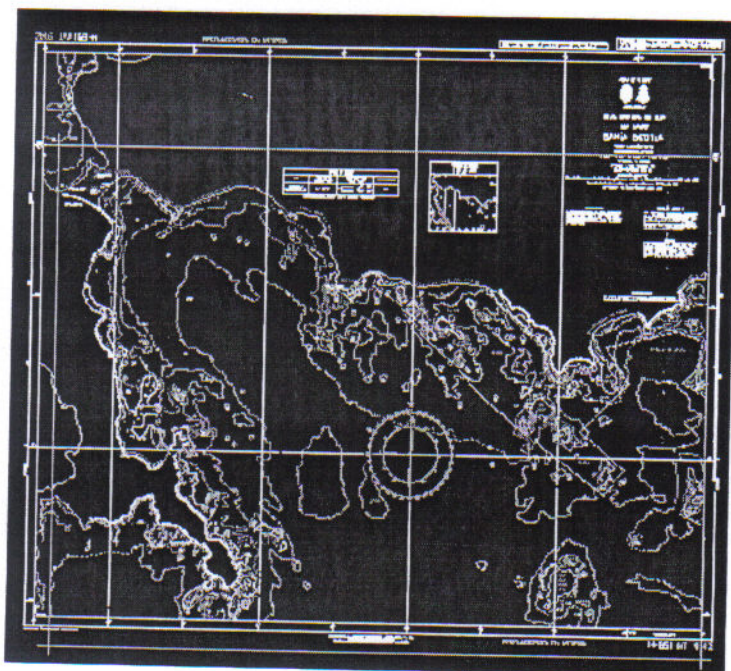
I am pleased to write to you in connection with Chart INT 9142 "South Orkney Islands, Laurie Island, Scotia Bay" Region M, to be published soon by this Hydrographic Service. In this regard, and according to the results of a study by our team of Antarctic consultants, I submit to the HCA a proposal to change the boundaries of the above chart.

This will give the mariner more time to adapt himself to the change of scale as well as the possibility to physically locate the geographic references necessary for its positioning and charting.

The new proposal also avoids too much representation of the Laurie Island earth's surface, which is of no benefit to the mariner.

In this way, a significant increase in sea surface in the southward direction is attained thus ensuring a larger under-keel clearance in the vicinity of cape Murdoch and Ailsa Craig. The latter is an important guide to enter Scotia Bay since its height and shape make it easily identifiable.

Therefore, I ask you to please approve the following changes in the boundaries:





Ministerio de Defensa
Servicio de Hidrografía Naval

INT 9142 South Orkney Islands Laurie Island. Scotia Bay		Present boundaries	Proposed boundaries	Scale
	South Latitude	60°47.1'S	60°47.3'S	1: 10.000
	North Latitude	60°43.4'S	60°44.0'S	
	West Longitude	44°45.0'W	44°44.8'W	
	East Longitude	44°36.0'W	44°36.0'W	

Note: Changes are highlighted in yellow

I inform you that these changes do not imply any delay in the final edition.

Best regards,



Contralmirante (RS) ANDRES ROQUE DI VINCENZO
JEFE DEL SERVICIO DE HIDROGRAFIA NAVAL

AL SEÑOR PRESIDENTE DE LA COMISION
HIDROGRAFICA DE LA OHI SOBRE LAANTARTIDA
Capitán de Navío D. Hugo GORZIGLIA
S / D