

HYDROGRAPHIC COMMISSION ON ANTARCTICA



HCA13-07.3A

HYDROGRAPHY PRIORITIES WORKING GROUP
HCA13 CADIZ, SPAIN

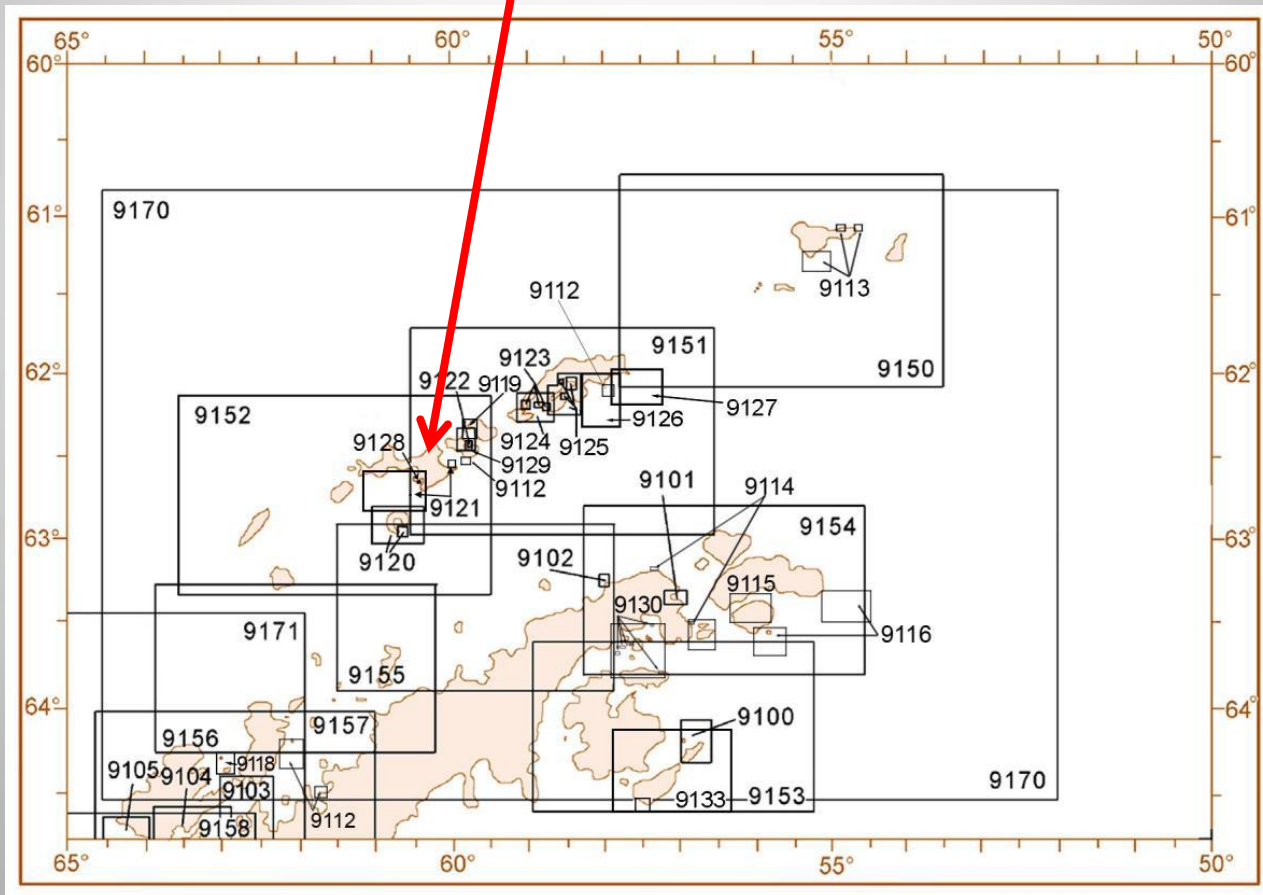
Work completed since HCA12

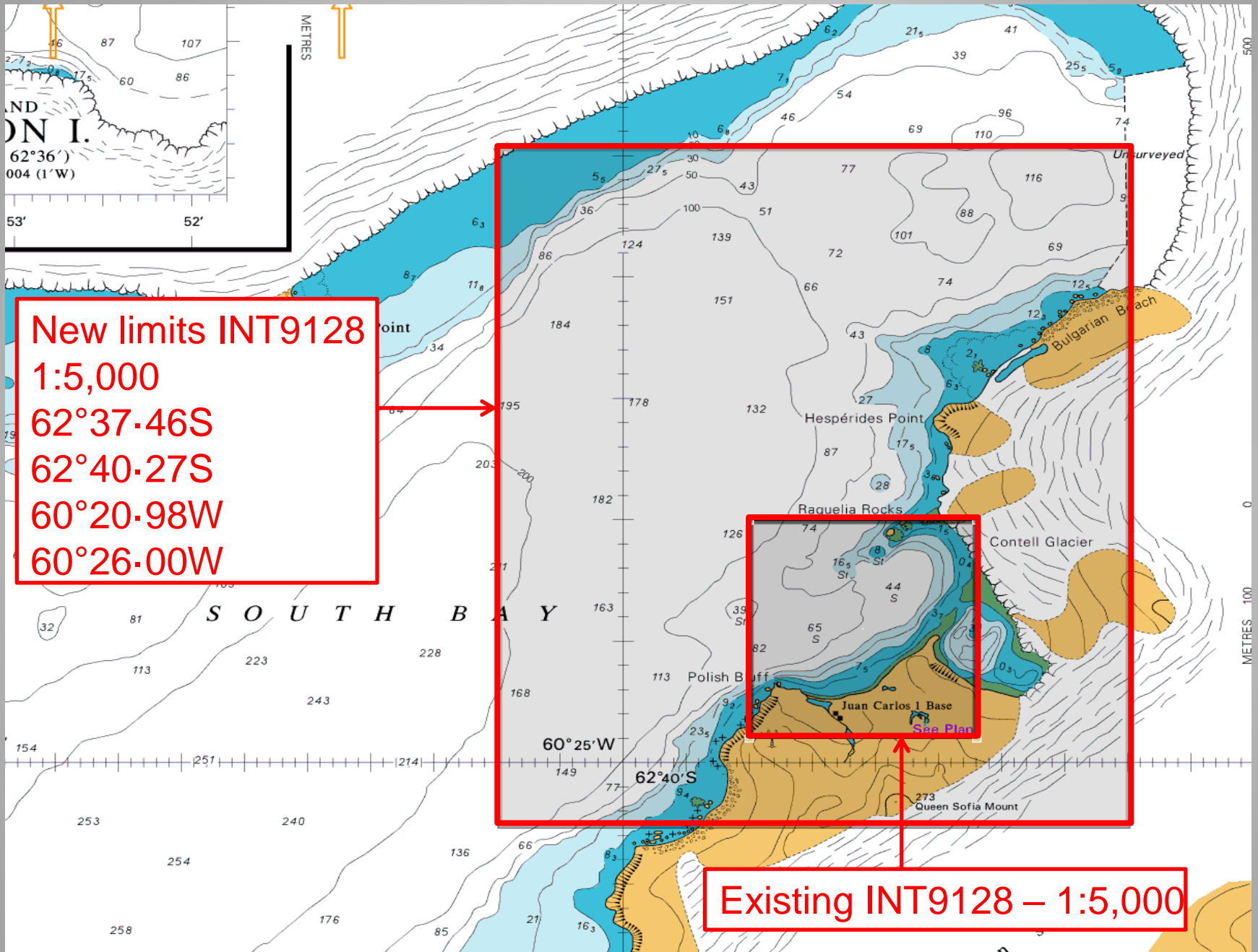
- Review of paper chart scheme for Region M
- Review of ENC scheme for Region M in conjunction with WEND
- Review of MSR and monitor vessel movements
- Updating of Survey Priorities list
- Produce list of planned surveys for 2103/14 season



Paper chart scheme review for Region M

Notification from Spain of changes to limits of INT9128



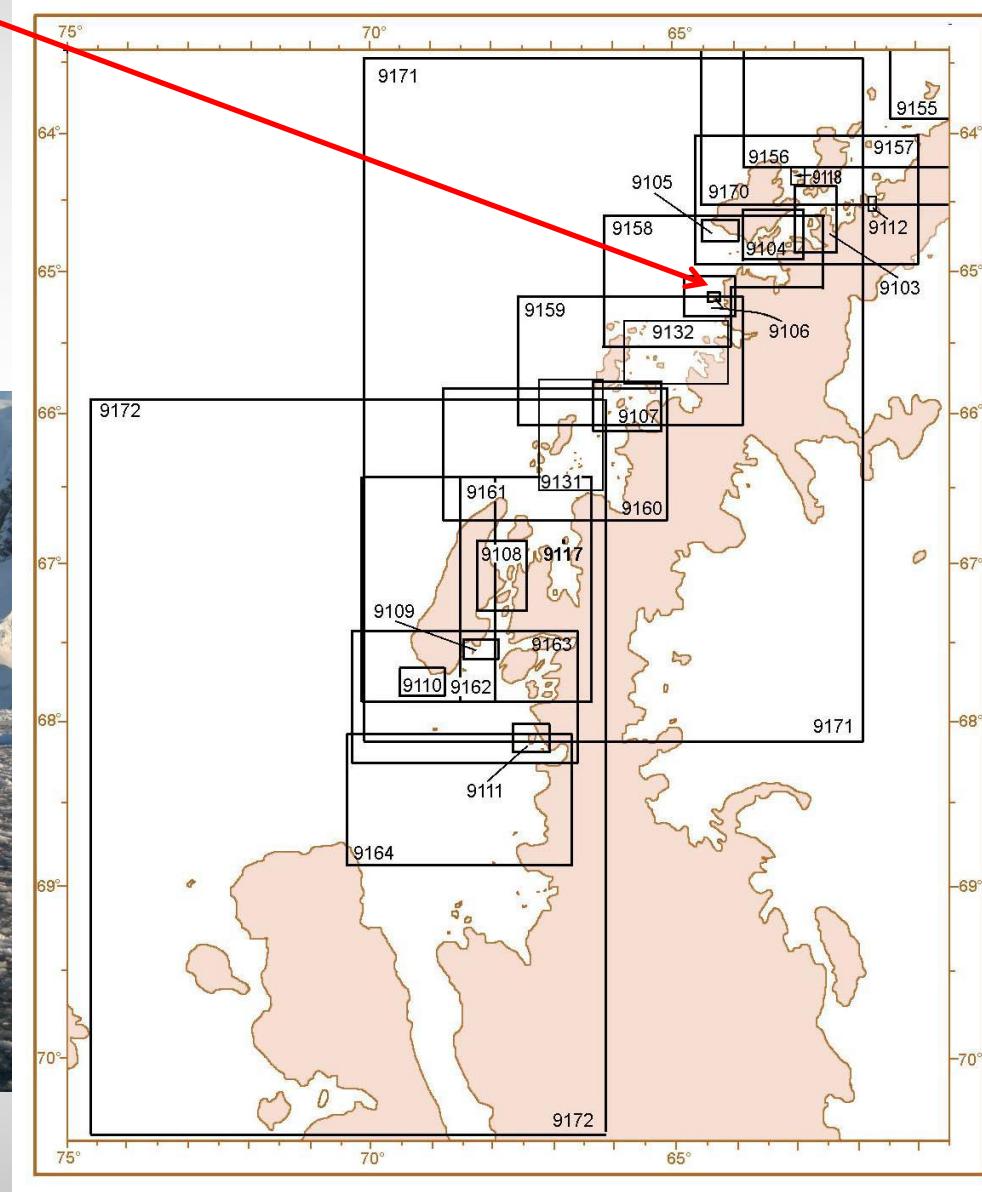


New limits INT9128
1:5,000
62°37.46S
62°40.27S
60°20.98W
60°26.00W

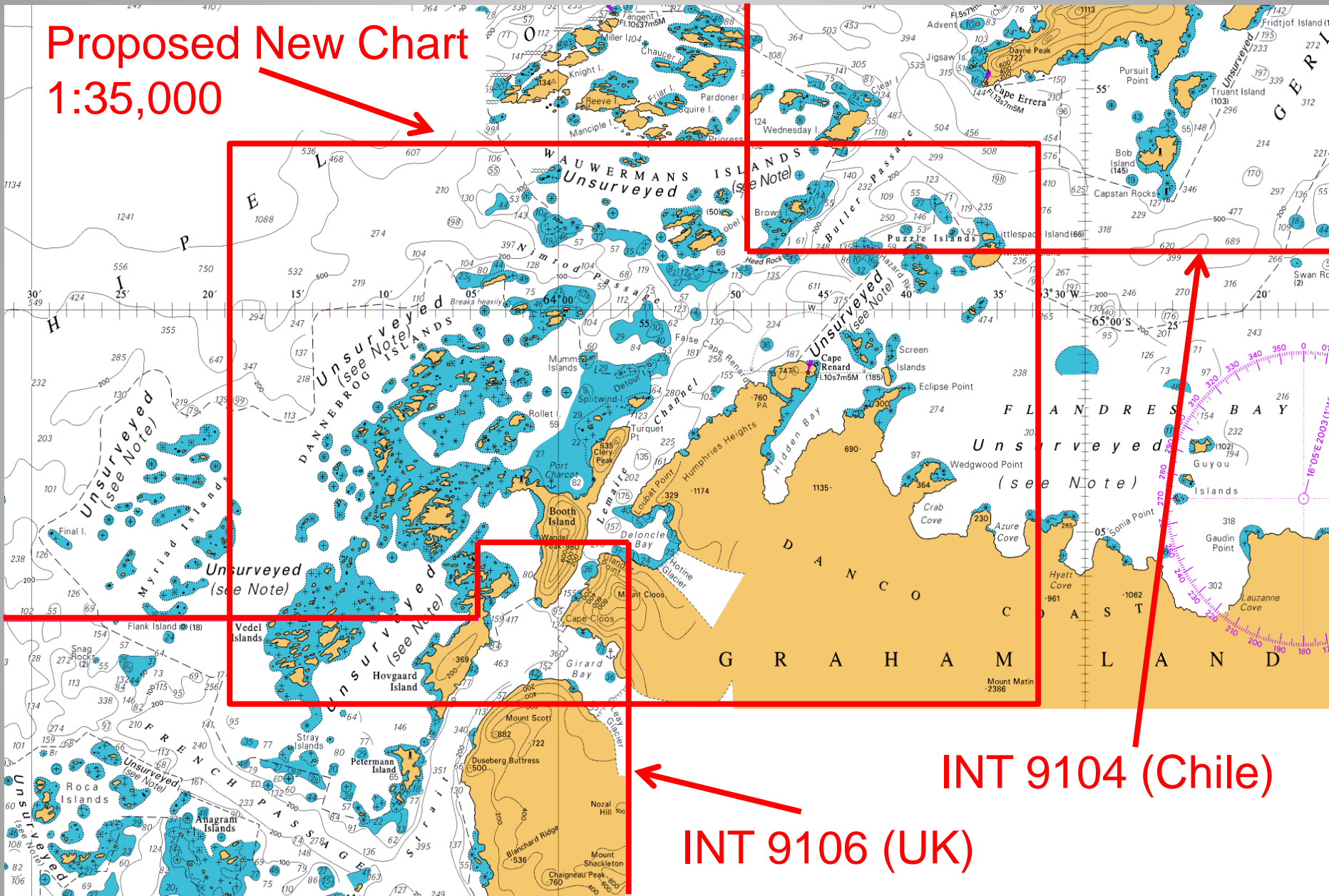
Existing INT9128 – 1:5,000

IAATO/UK Proposed New Chart of Lemaire Channel

Most visited area of 2012/13
Season (33,048)



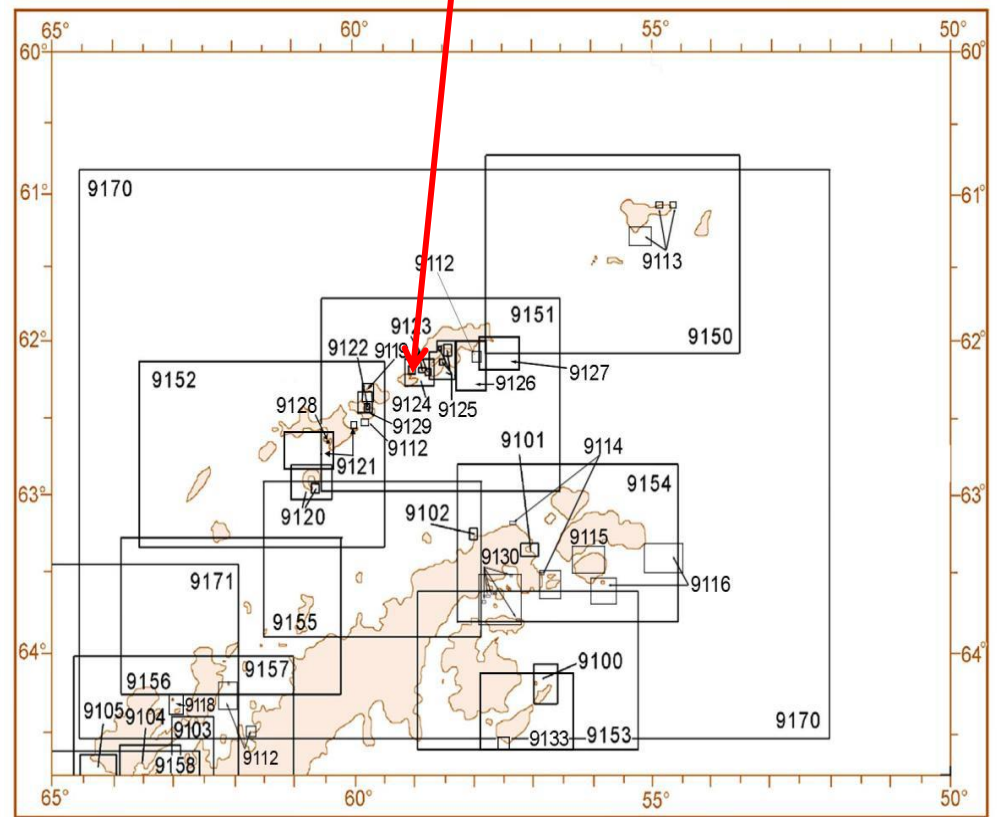
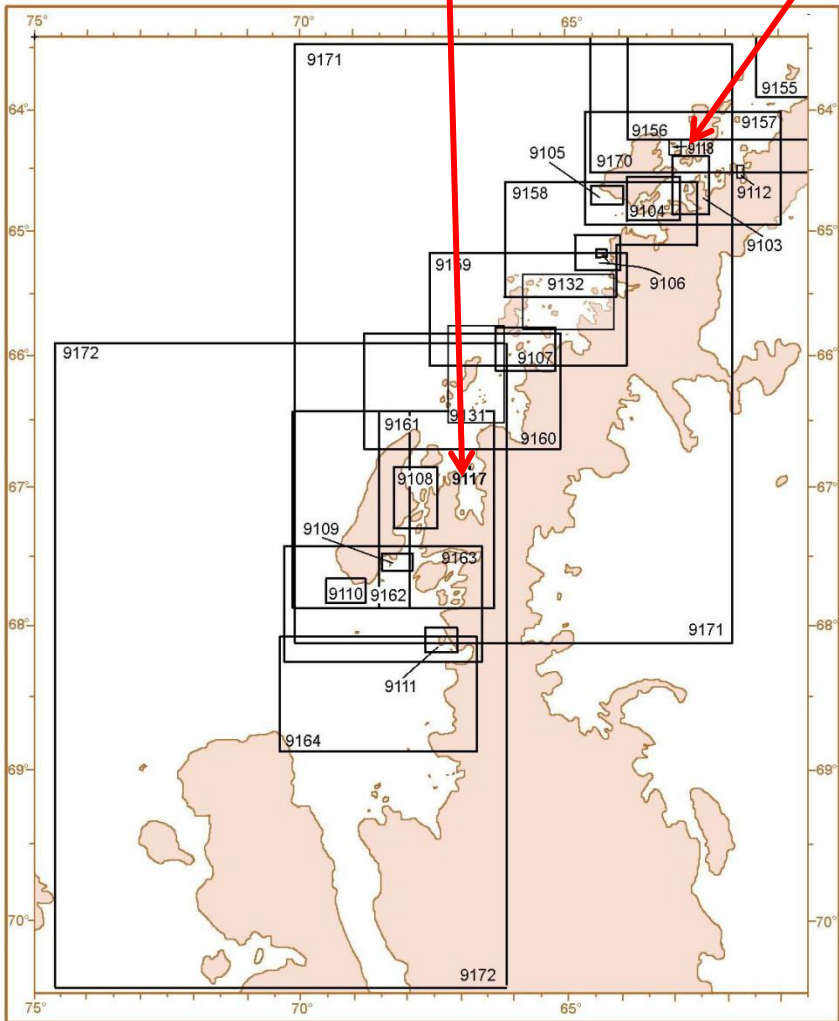
Proposed New Chart 1:35,000



INT 9104 (Chile)

INT 9106 (UK)

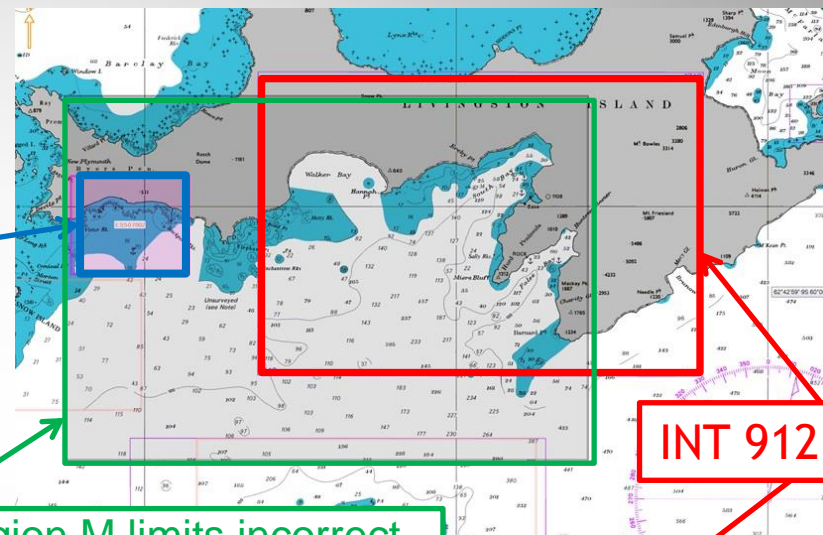
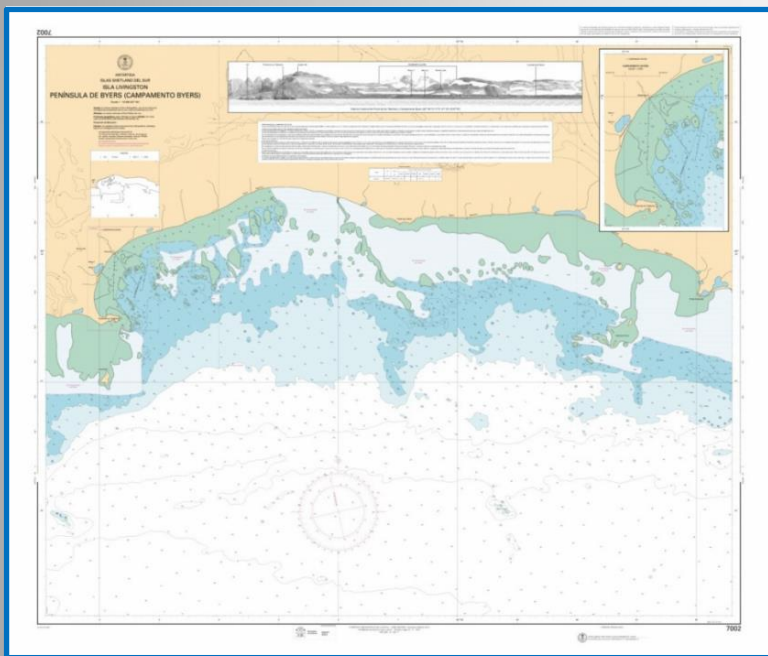
HPWG Chair proposal to produce one chart A0 size to replace INT9117(UK), 9118(UK) and 9119(?!)



How much coverage do we need?

Possible additions to the INT chart scheme

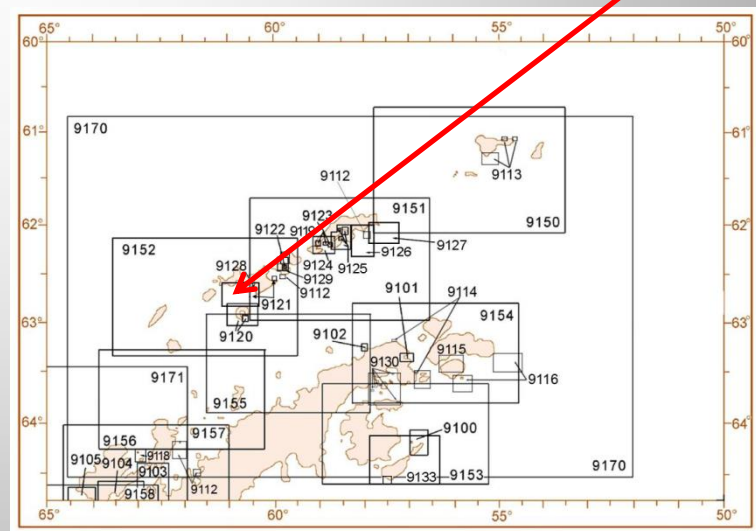
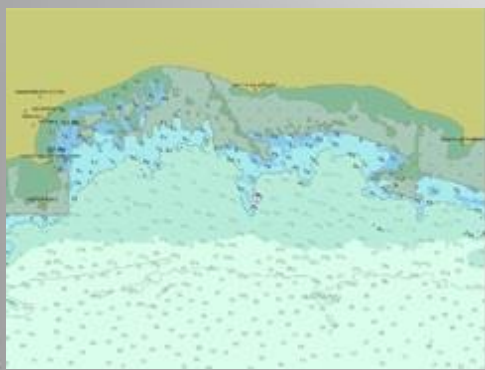
New Spanish National chart 7002 1:10,000

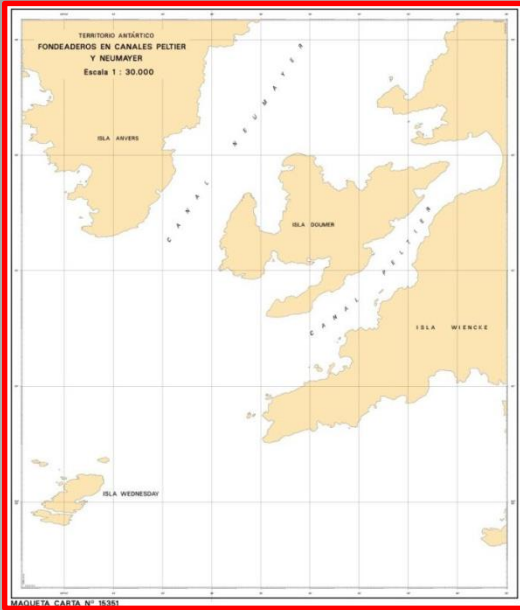


INT 9121

Region M limits incorrect

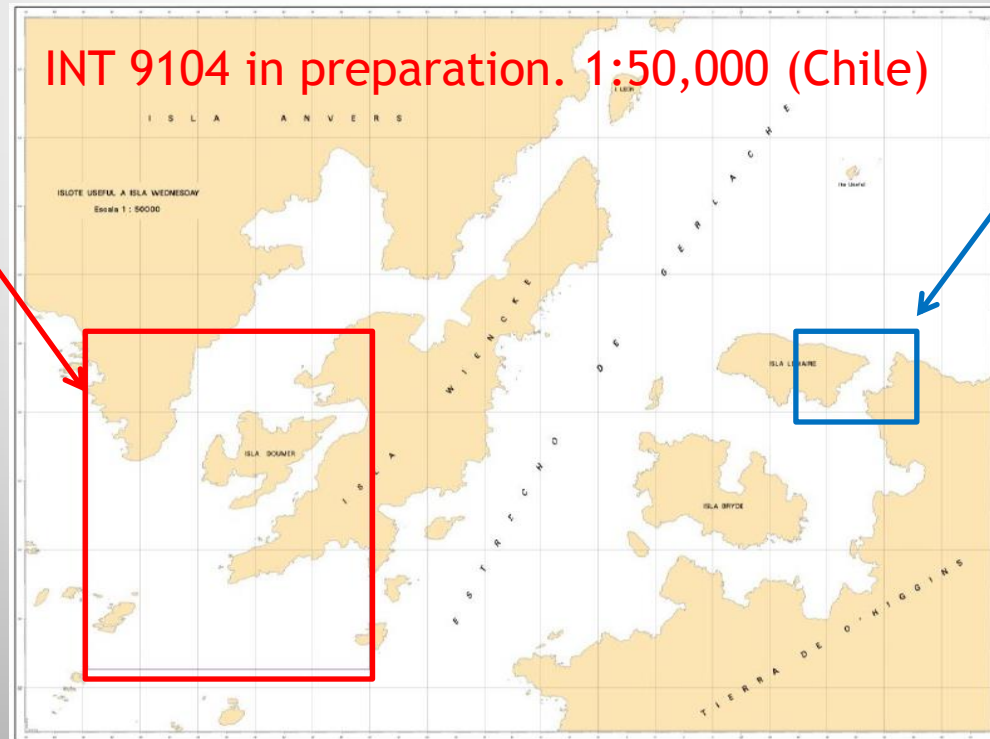
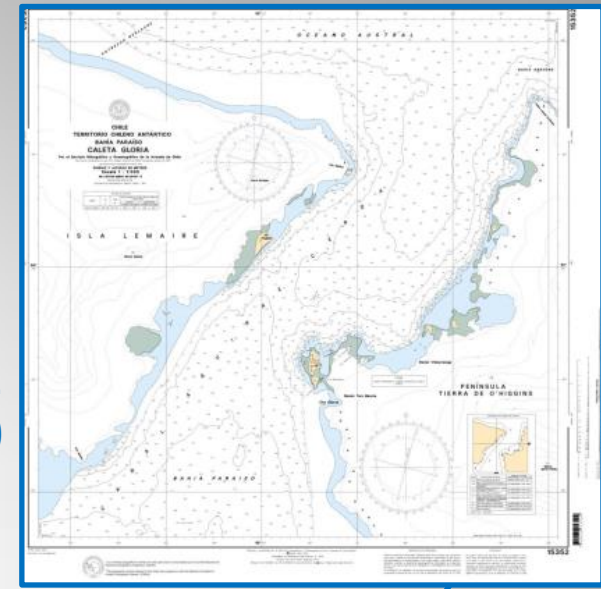
ENC ES507002





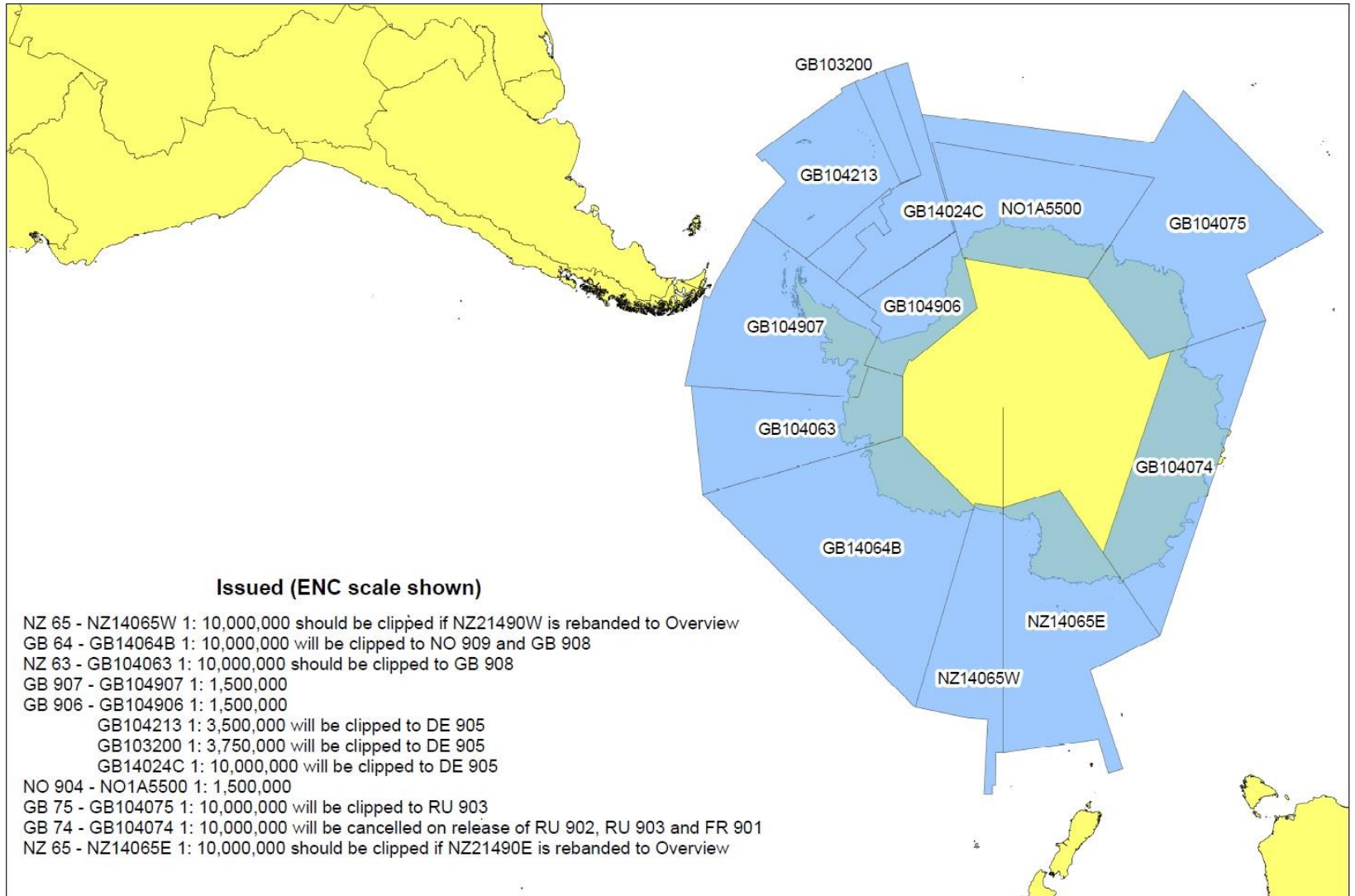
Chilean National chart 15351
In preparation. 1:30,000

Chilean National chart 15352
in preparation. 1:7,000

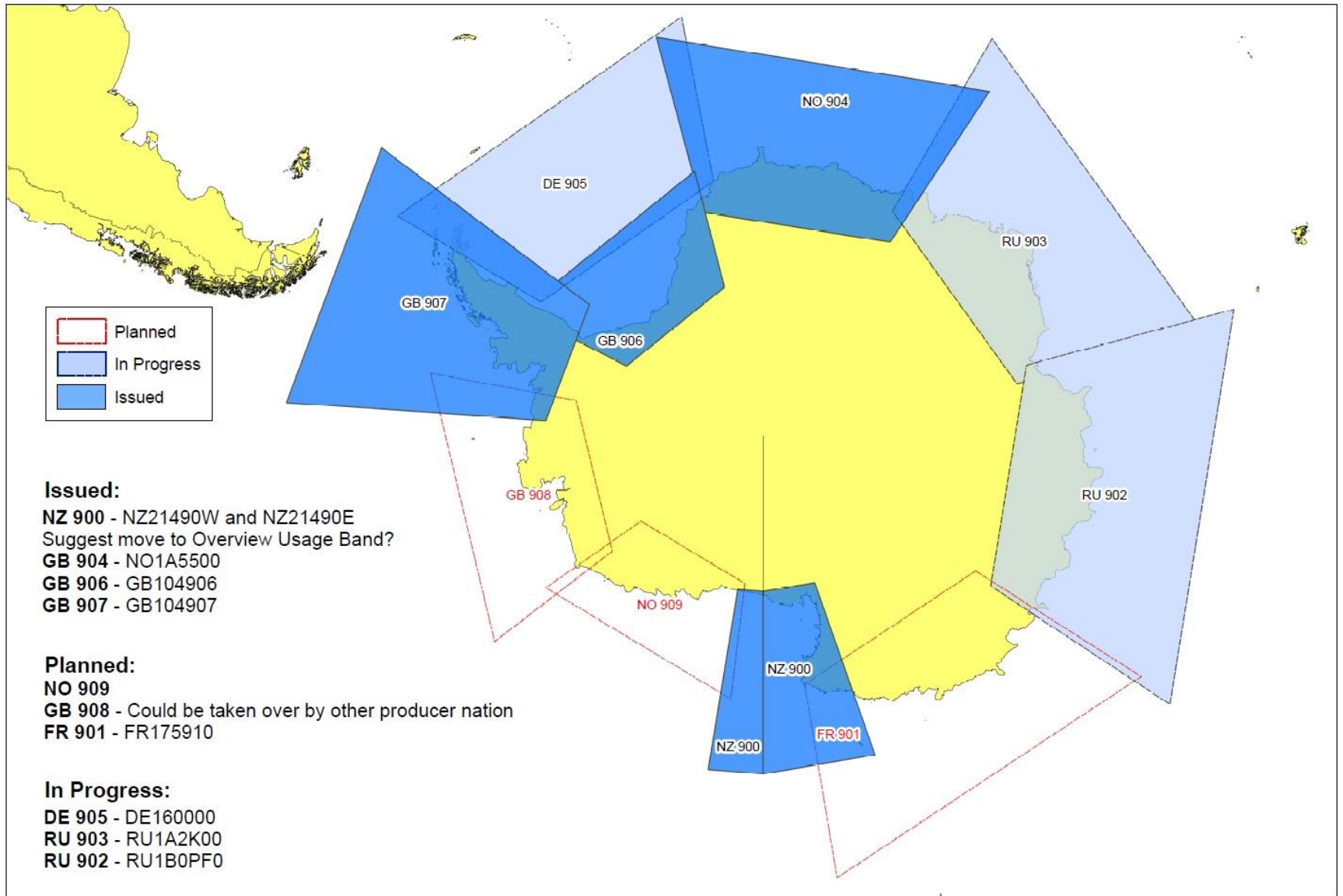


ENC scheme review for Region M

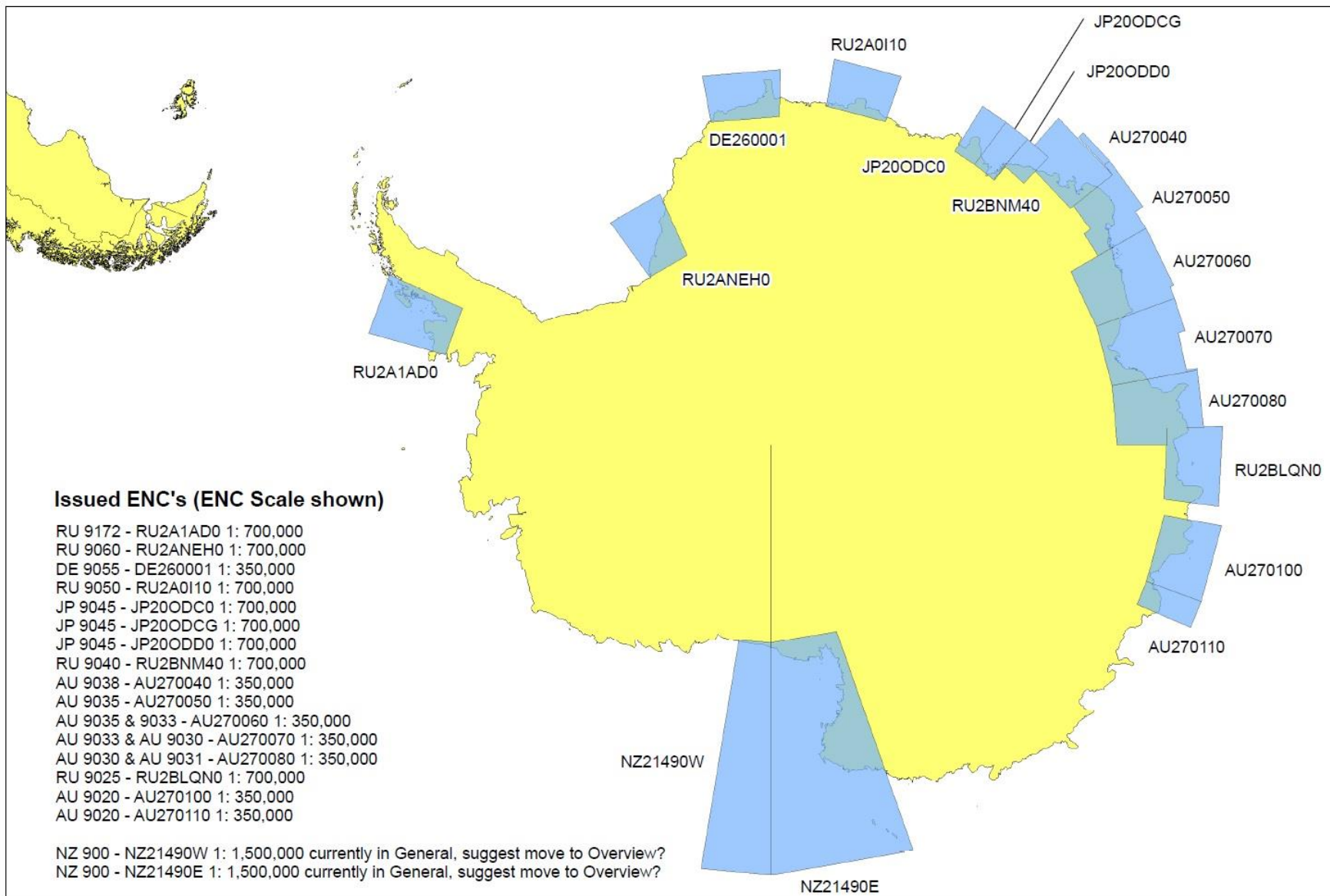
Hydrographic Commission on Antarctica - Existing Overview ENC Coverage



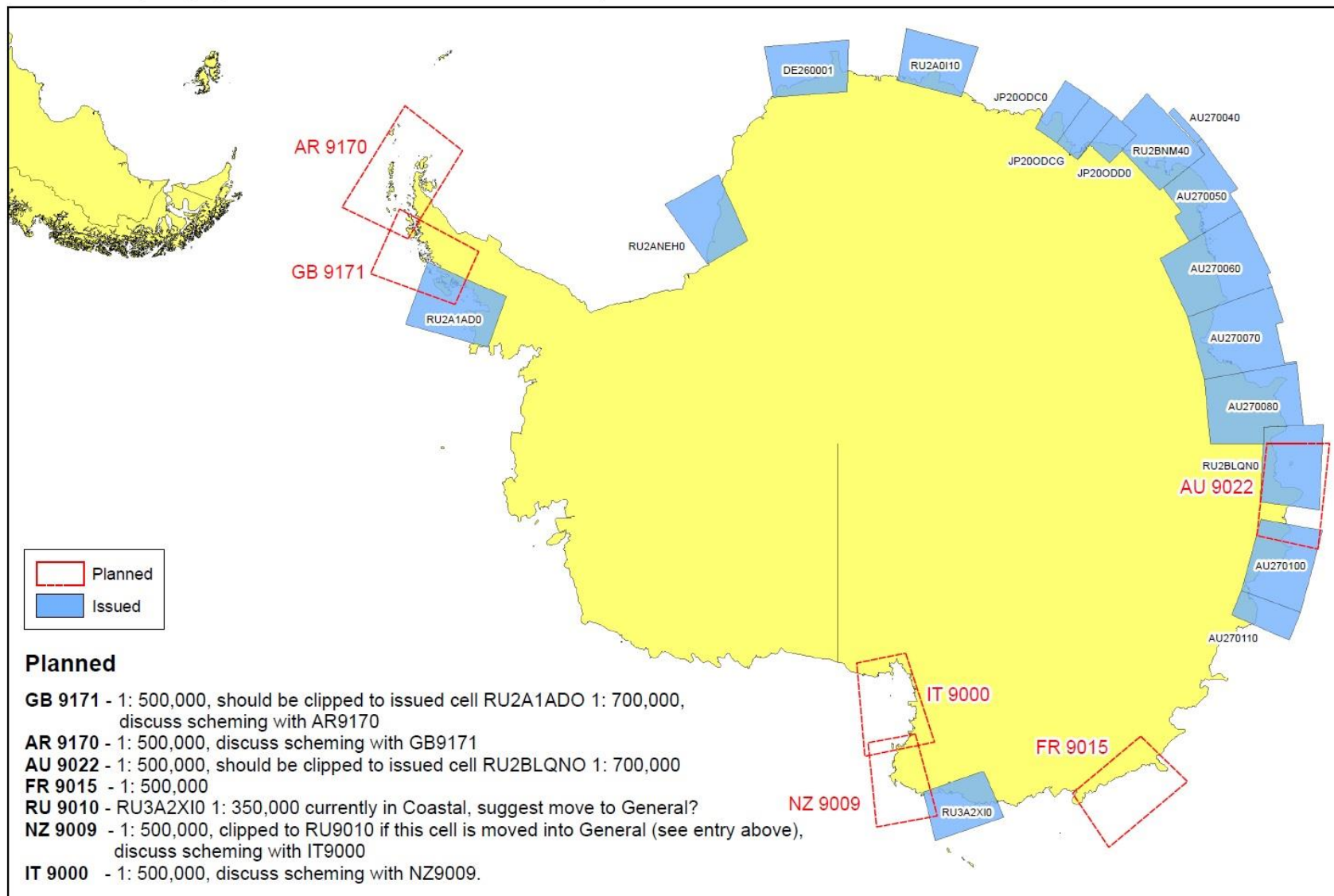
Hydrographic Commission on Antarctica - Proposed Overview ENC Scheme based on INT Chart 1: 2M series



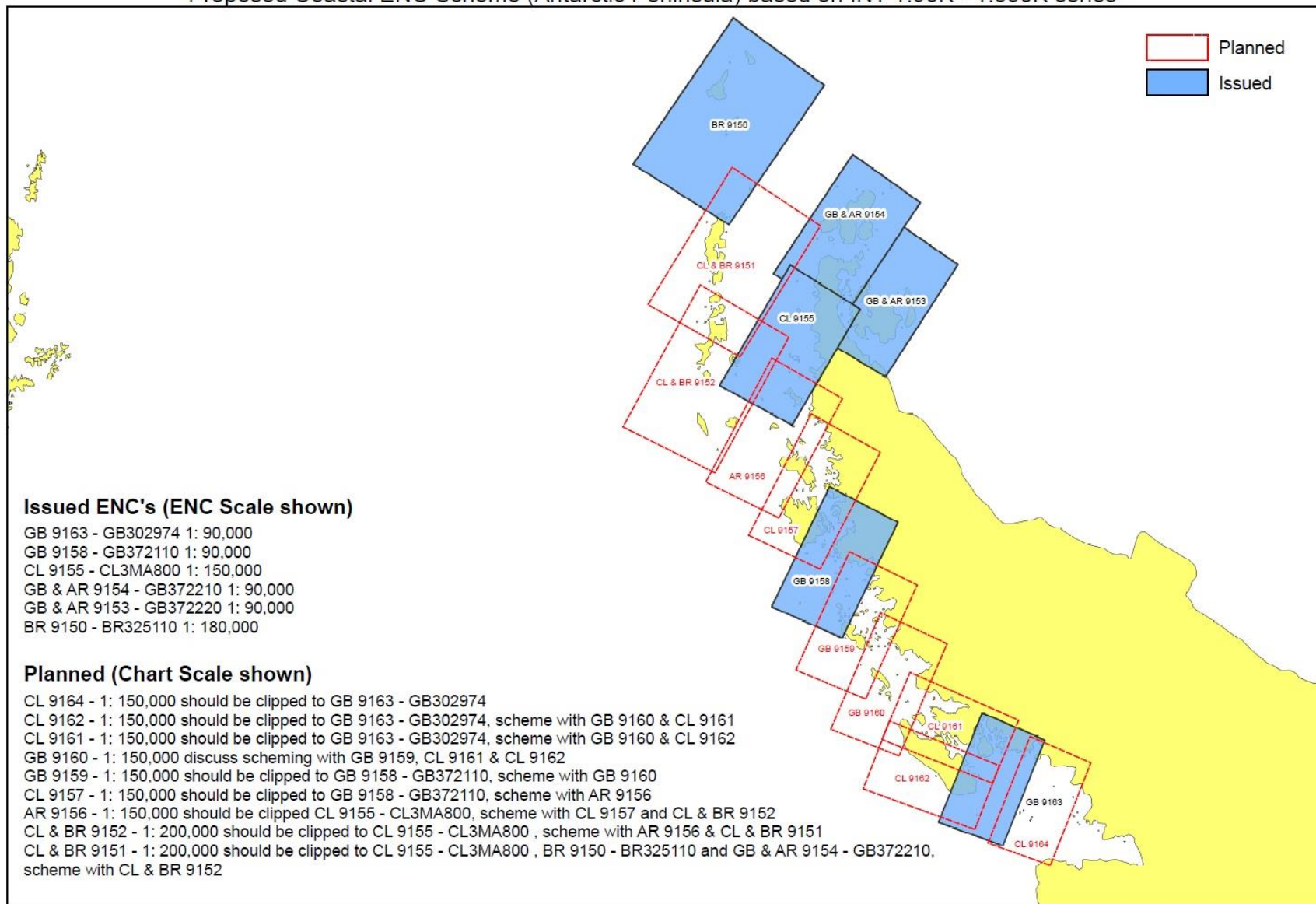
Hydrographic Commission on Antarctica - Existing General ENC Coverage



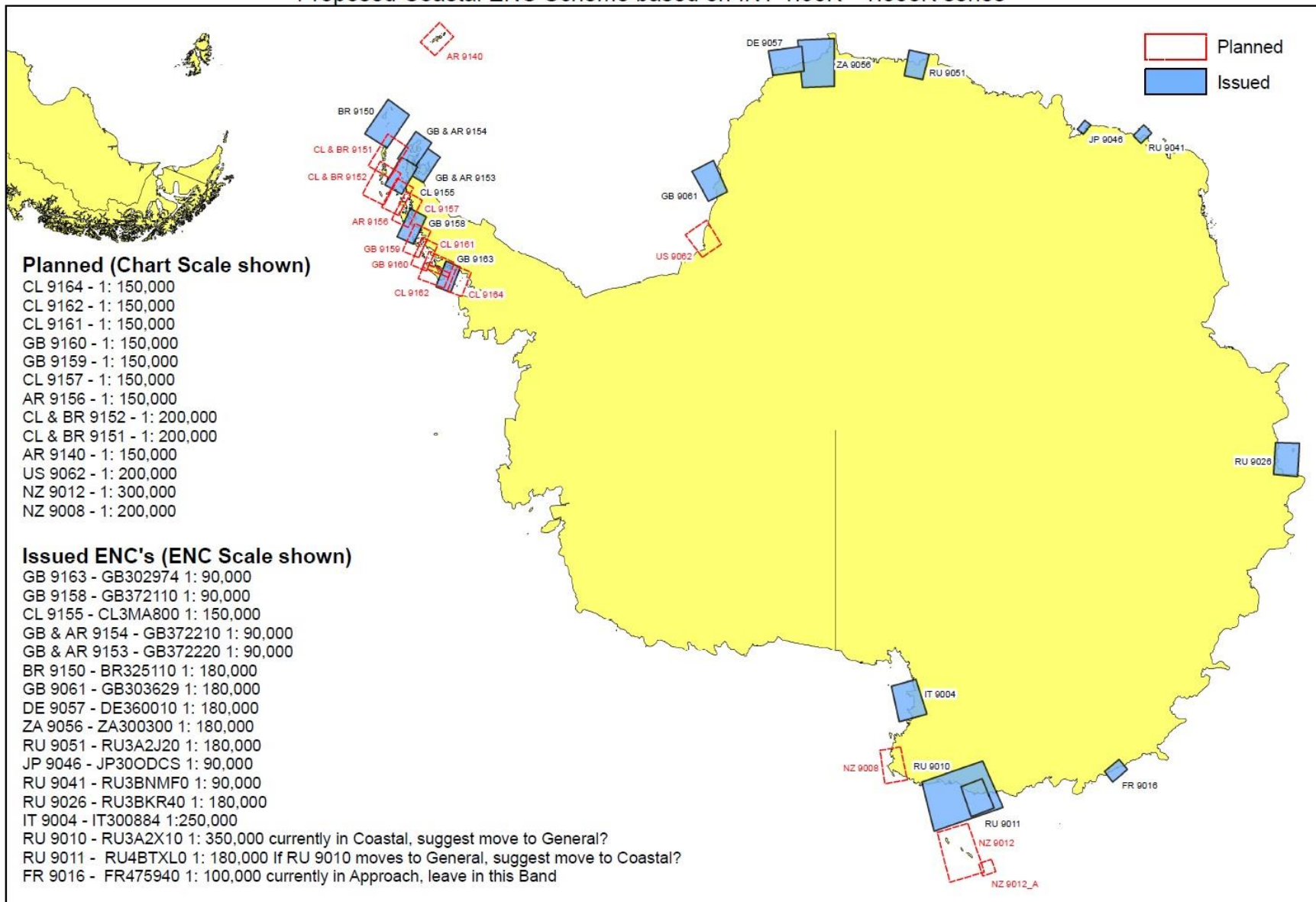
Hydrographic Commission on Antarctica - Proposed General ENC Scheme based on INT 1:500K series



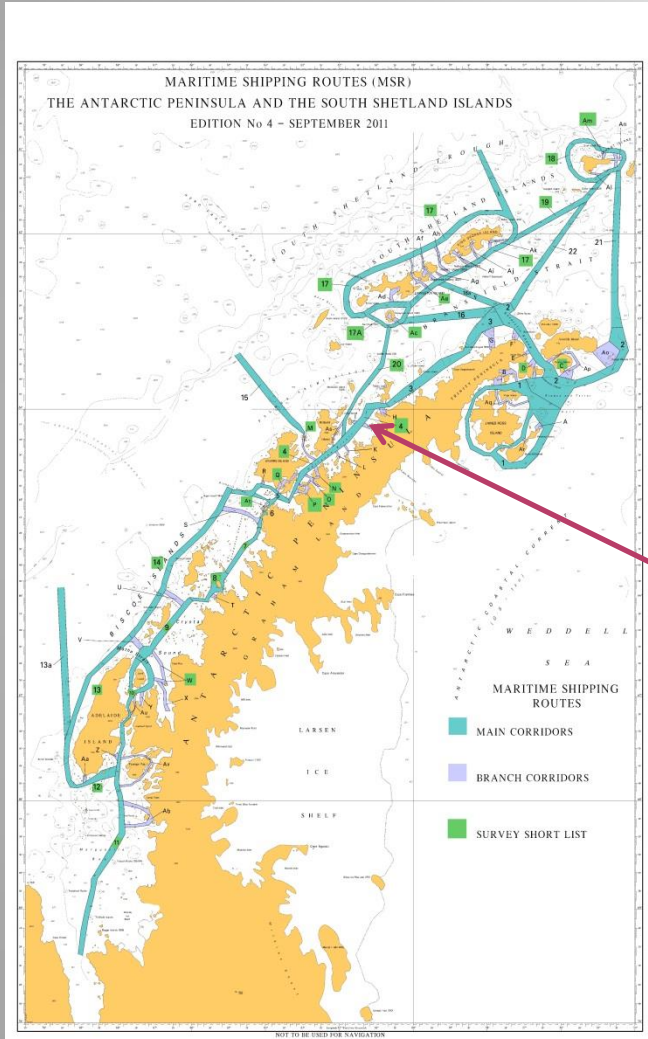
Hydrographic Commission on Antarctica
 Proposed Coastal ENC Scheme (Antarctic Peninsula) based on INT 1:90K - 1:350K series



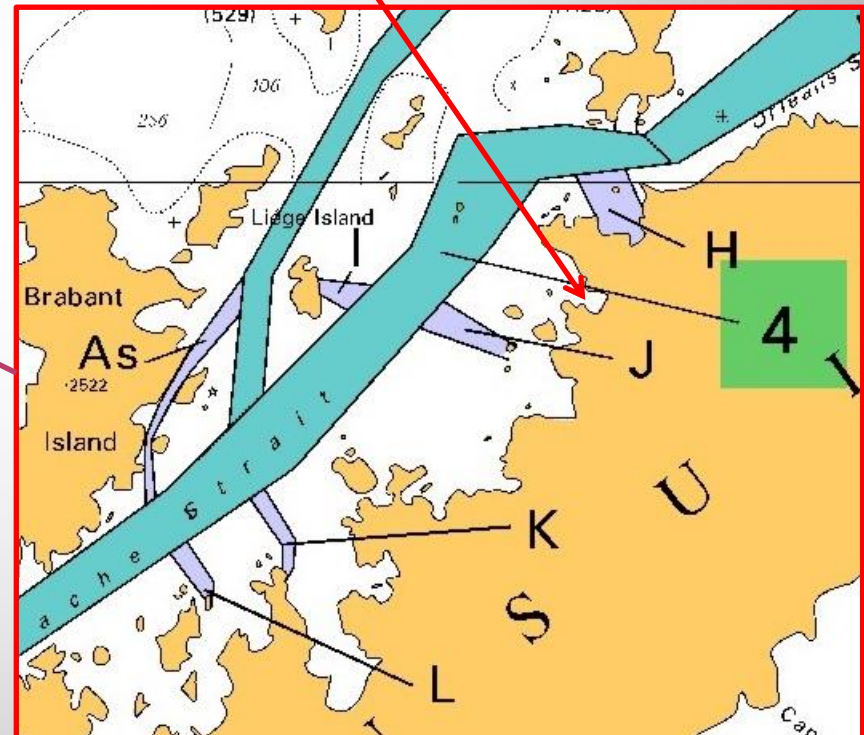
Hydrographic Commission on Antarctica Proposed Coastal ENC Scheme based on INT 1:90K - 1:350K series



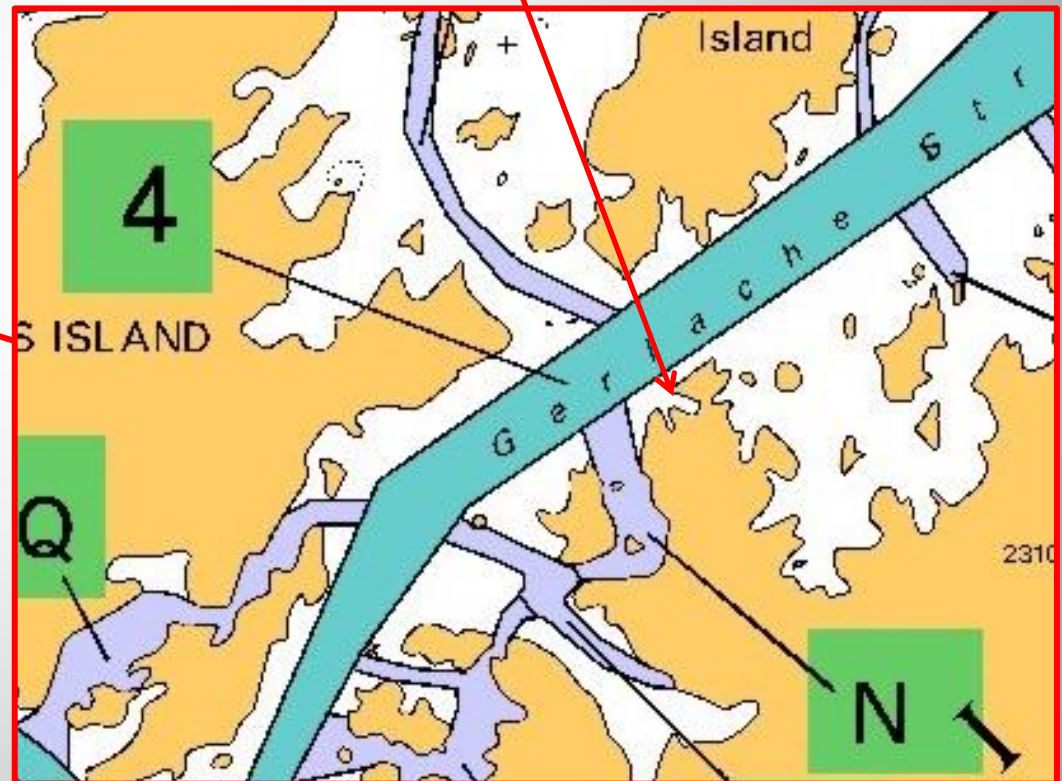
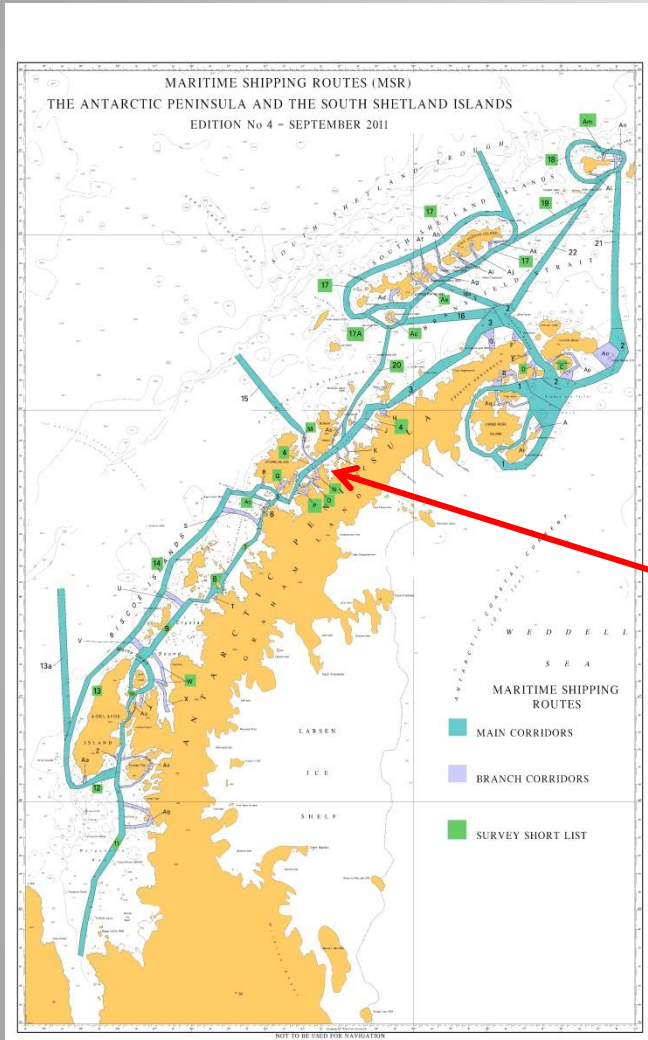
Proposed addition to MSR routes



Cierva Cove
IAATO 2012/13 statistics = 4389

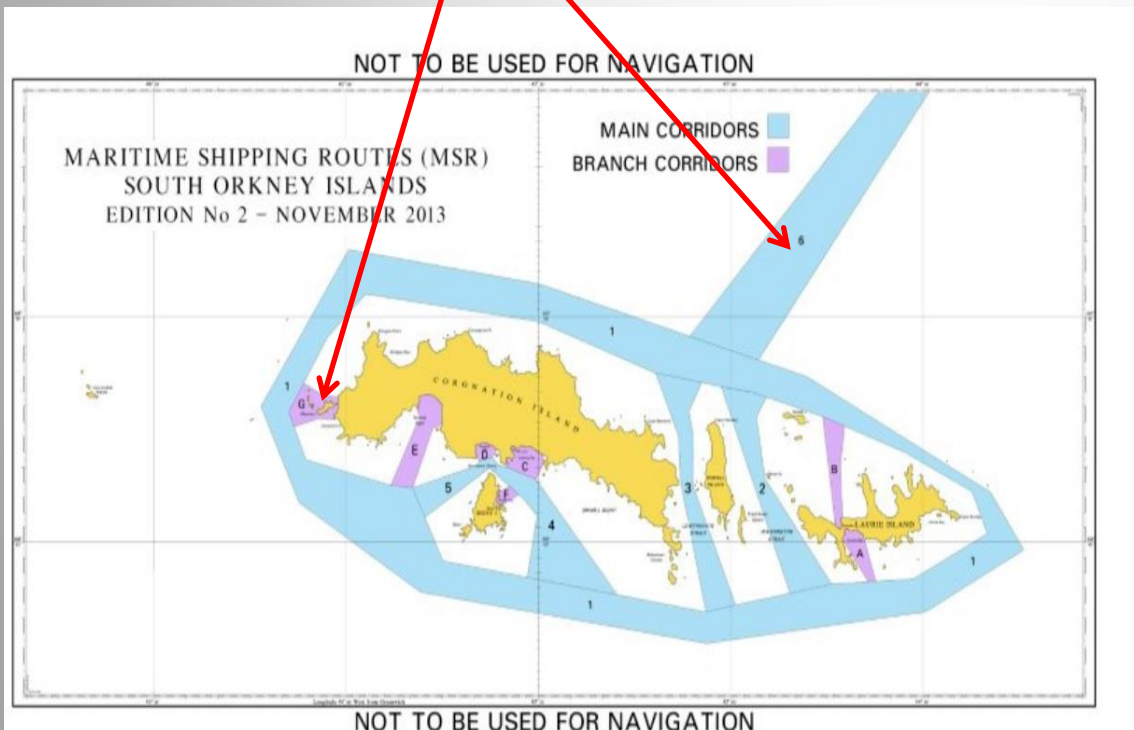


Orne Harbour
IAATO 2012/13 statistics = 3309
75% Surveyed by UK 2012/13



Review of Survey Priorities Short List and Long Term Survey Plans

Lists updated with the addition of MSR Routes for South Orkneys (with additions from IAATO)



HCA SURVEY SHORT LIST SOUTH ORKNEY ISLANDS

Updated to November 2013

Main corridors

MSR*	Name	Usage category	Survey category	Notes and INT chart coverage. Published and proposed.
1	South Orkney offshore route	C	B & C	INT 9140 Partly surveyed by Argentina 2010-12
2	Washington Strait	C	A	INT 9140 Block surveyed by Argentina 2010-11
3	Leythwaite Strait	C	C	INT 9140 Unsurveyed
4	SE approaches to Signy Island	B	A & B	INT 9141 & INT 9140. 75% fully surveyed. Block surveyed by UK 1997
5	SW approaches to Signy Island	B	B	INT 9141 & INT 9140. Modern survey required. Last surveyed in 1966
6	Transit route North East	B	C	INT 9140

Branch corridors and approaches

MSR	Name	Usage category	Survey category	Notes and INT chart coverage. Published and proposed.
A	Scotia Bay	B	A	100% surveyed, INT 9142 & INT 9140 Blocks surveyed by Argentina in 2010-12
B	Approaches to Uruguay Cove	C	C	INT 9140
C	Iceberg Bay and Shingle Cove	B	A+C	INT 9141 1000% Blocks surveyed by UK in 2001
D	Marshall Bay	C	B & C	INT 9141. Block surveyed by UK in 1964
E	Norway Bight and Approaches	C	C	INT 9140 Unsurveyed
F	Borge Bay and approaches	A	A	INT 9141 100%. Block surveyed by UK in 1997
G	Monroe Island and approaches.	B	B & C	INT 9140 Unsurveyed

Categories

Category	Usage
A	Frequent
B	Regular
C	Infrequent

Category	Current survey status
A	Adequately surveyed
B	Requires re-survey at larger scale or to S-44 standard
C	Has not been systematically surveyed/Unsurveyed

* MSR = Maritime Shipping Route. The figures / letters in this column are shown on the MSR diagram which is on the following page.

Updated IAATO visit statistics for 2012/13 season

