

HYDROGRAPHIC COMMISSION ON ANTARCTICA



HCA13-08.1E

HYDROGRAPHY PRIORITIES WORKING GROUP
HCA13 CADIZ, SPAIN

Proposed New Chart for Region M

Reference Action Item HCA12/9 and IHB letter at HCA13 07.1D

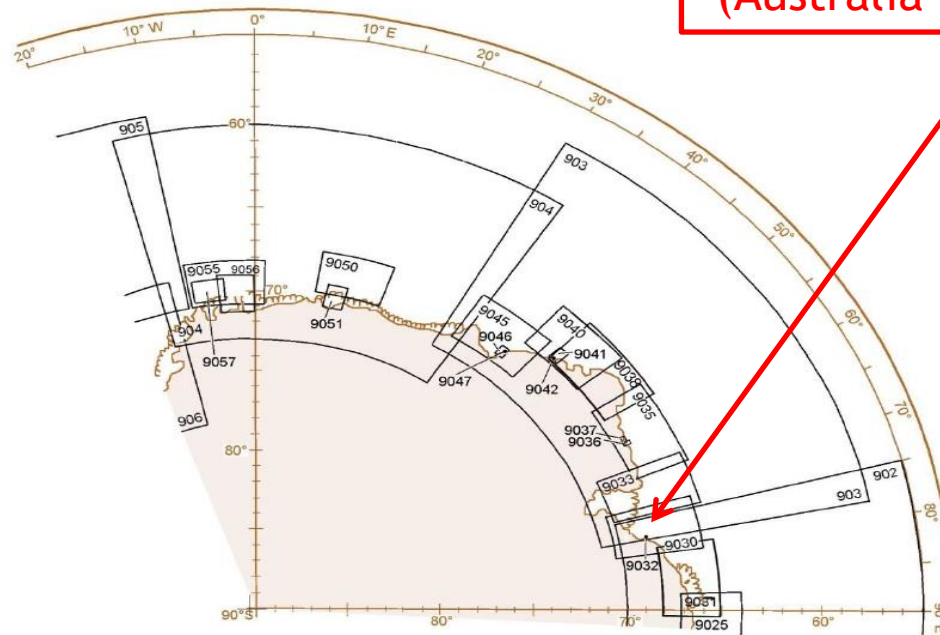
Catalogue of International Charts

Catalogue des cartes internationales

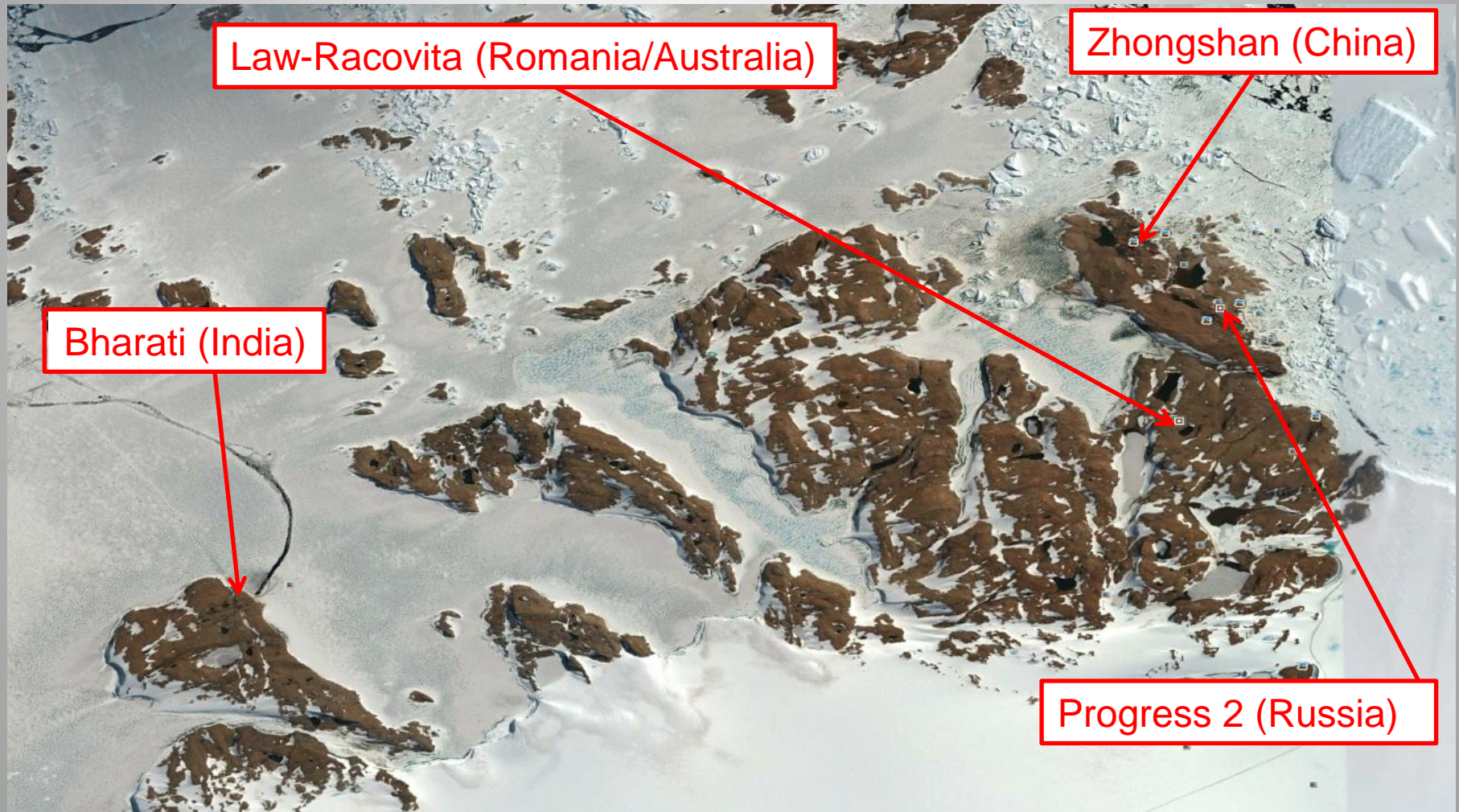
M.4

LAZAREV SEA TO COOPERATION SEA
(20°W – 90°E)

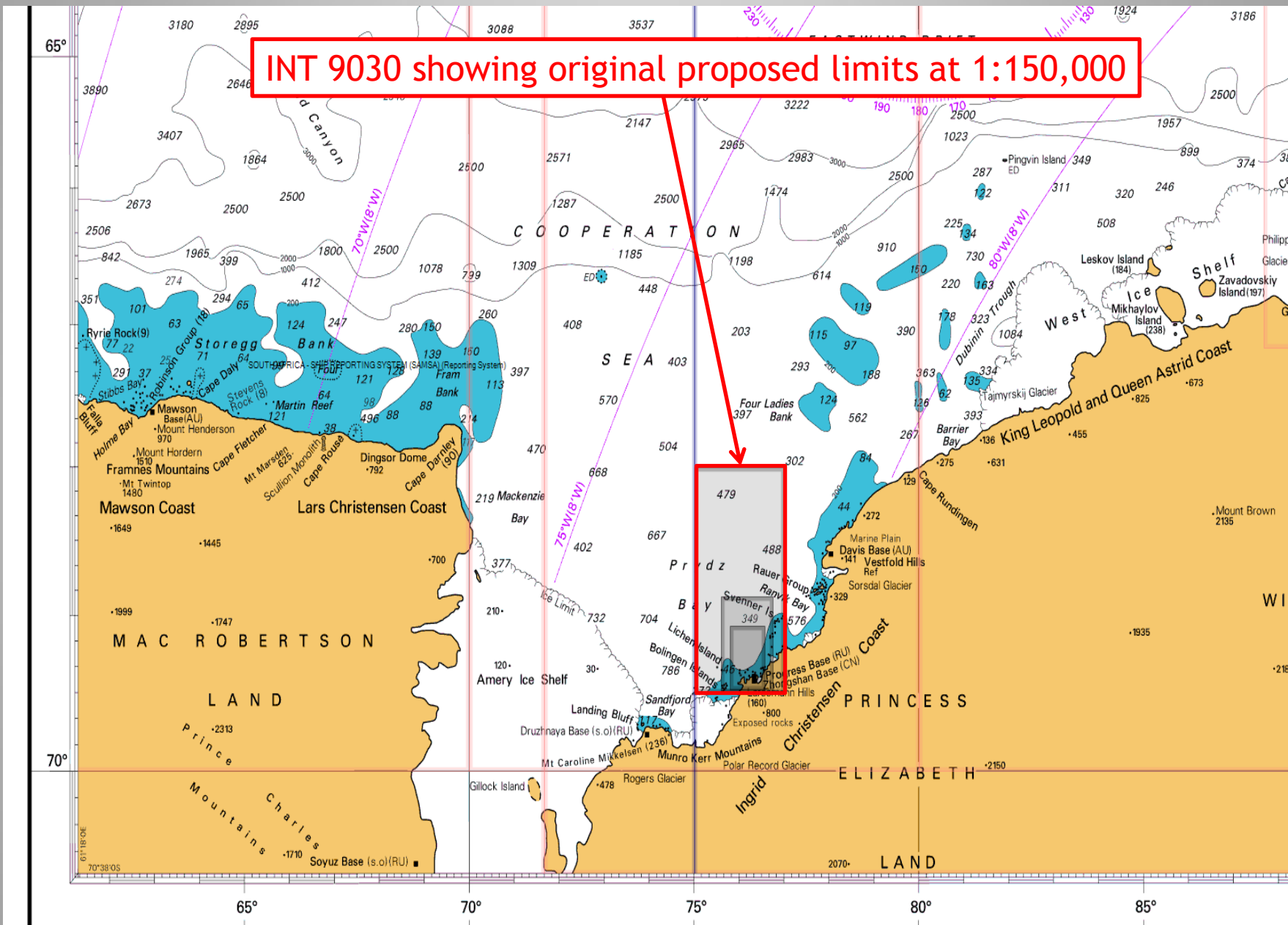
Existing coverage INT 9030
(Australia 1:500,000)



Antarctic Scientific Stations requiring large scale chart coverage.



INT 9030 showing original proposed limits at 1:150,000



Original limits 1:150,000

Option 1

1:75,000 at 68°S
68°52.50S
69°30.00S
76°45.00E
75°36.13E
(980x640mm)

Option 2 (Preferred)

1:50,000 at 68°S
69°04.10S
69°29.00S
76°34.00E
75°48.09E
(980x640mm)

