



Hydrographic Commission on Antarctica

National Report by

**Australia**

Captain Fiona Freeman

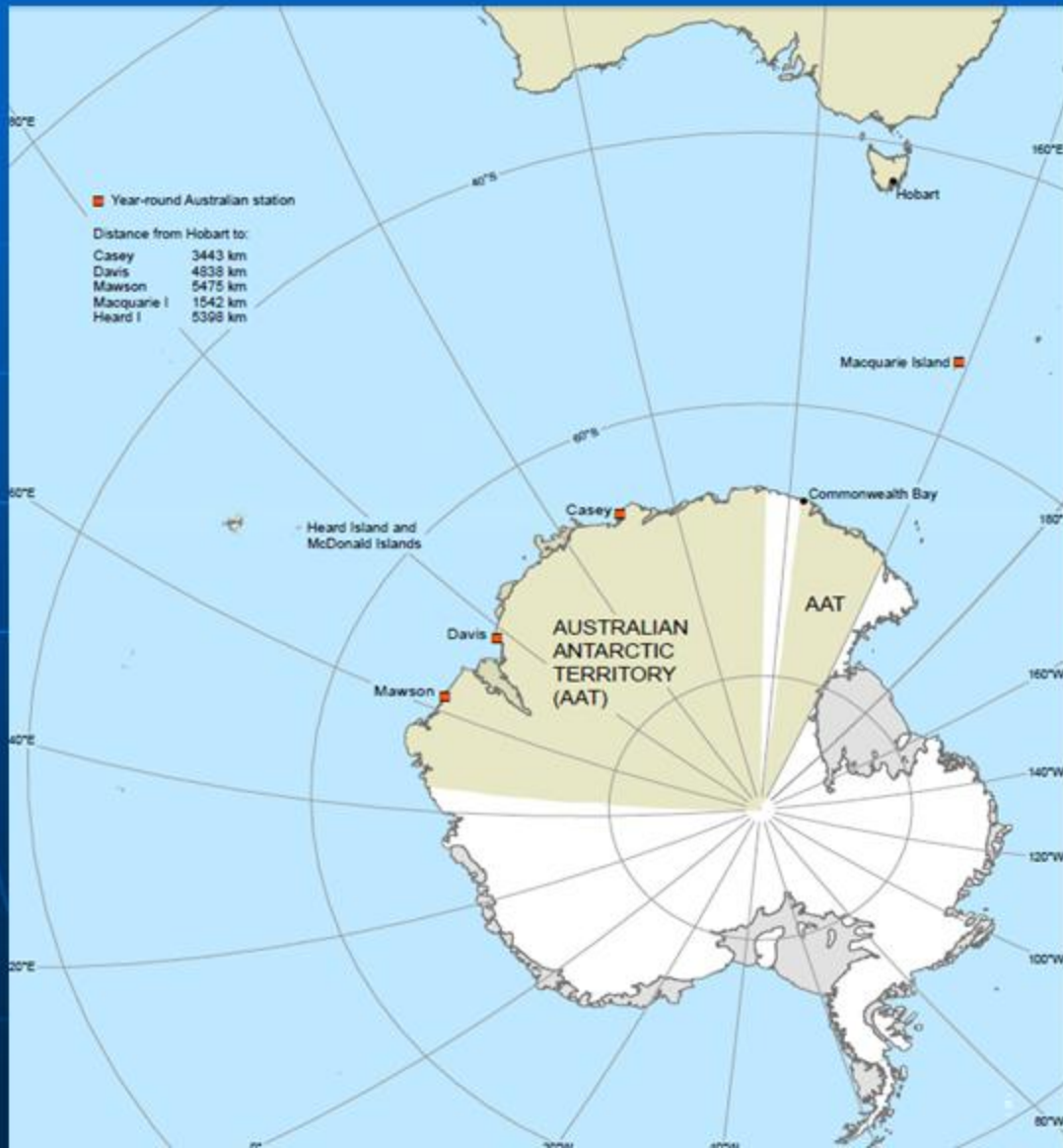
Australian Hydrographic Service

## Survey and charting progress in Antarctica since last meeting (December 2013)

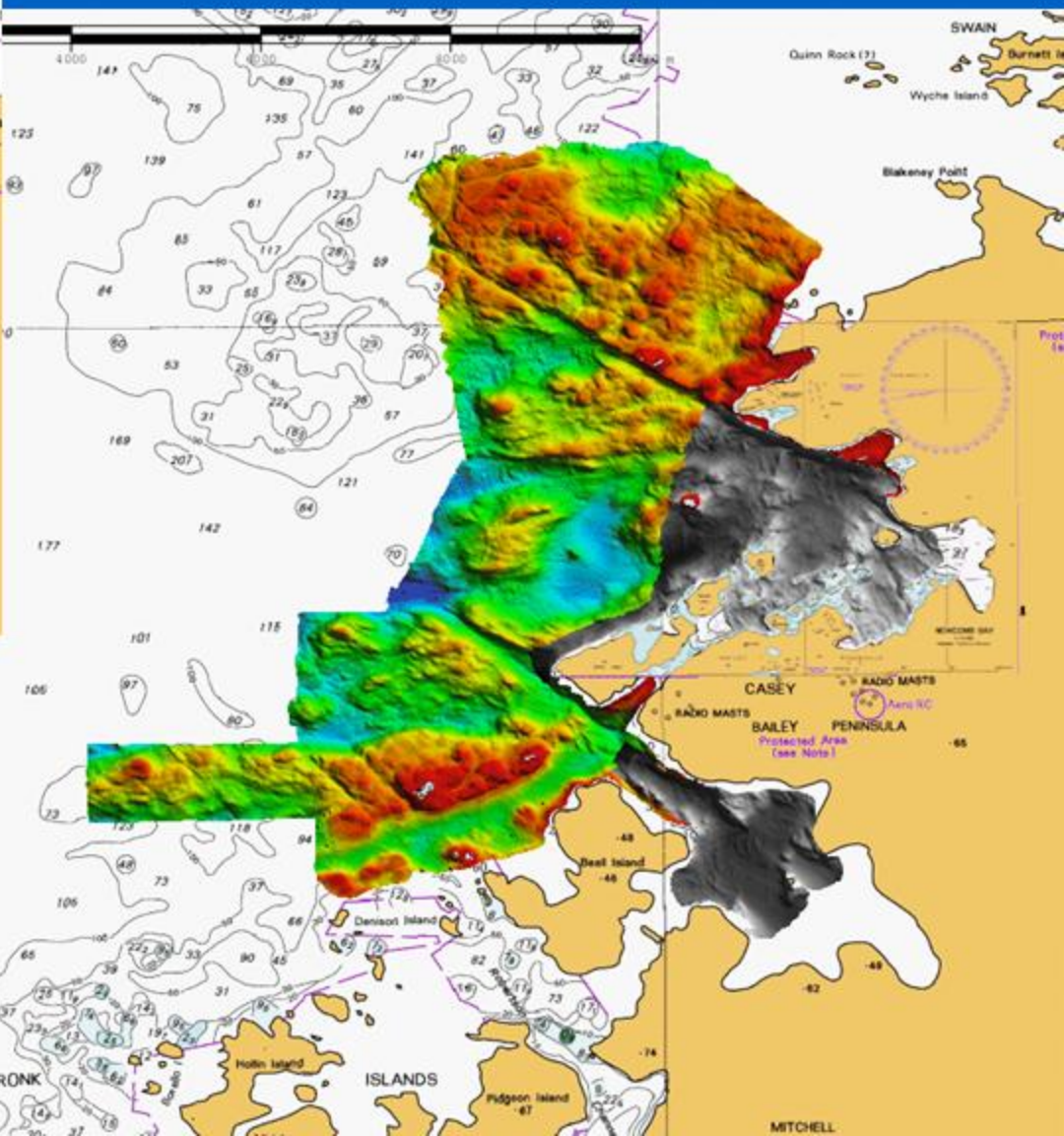
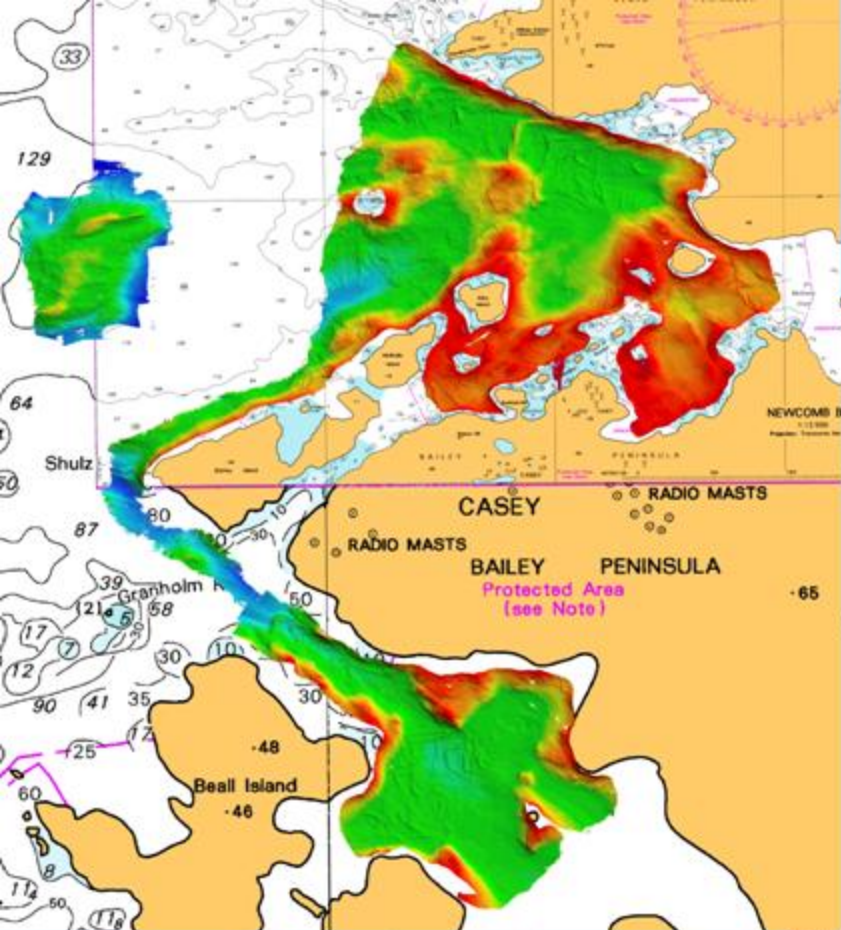
- + New Editions of AU4601P0 and Aus 601 Approaches to Casey for new bathy surveys
- + Areas surveyed – Casey Station HI 545 (2013/14) HI 560 (2014/15)
- + enhanced program of mapping and charting in East Antarctica
- + Australia's Antarctic Strategy and 20 Year Action Plan - <http://www.antarctica.gov.au/about-us/antarctic-strategy-and-action-plan>



# Australian Antarctic Territory (AAT)



+ HI 545 (2013/14)

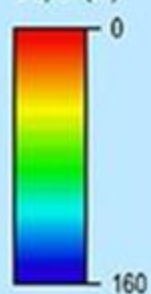


+ HI 560 (2014/15)

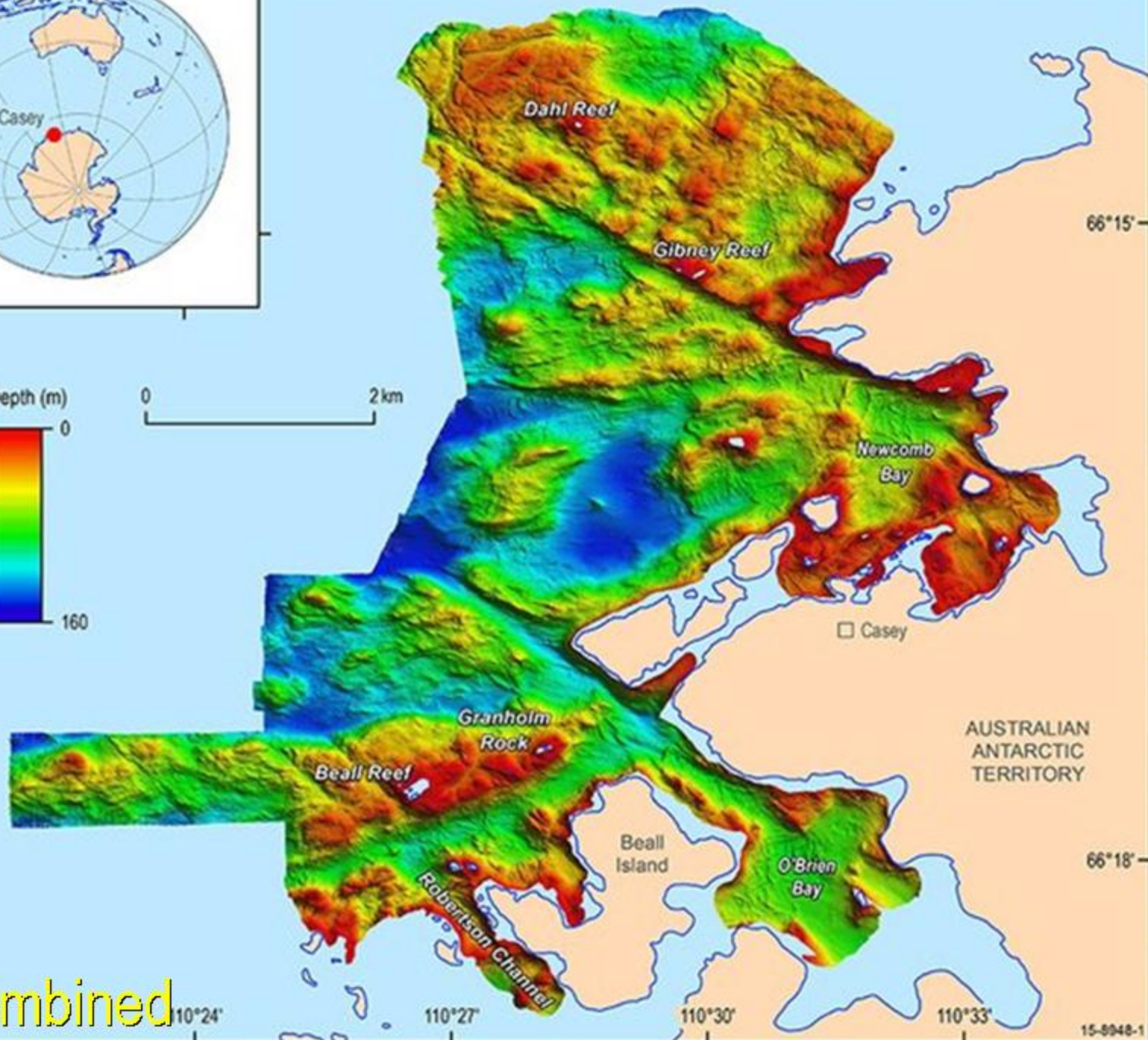




Depth (m)



0 2 km



Combined

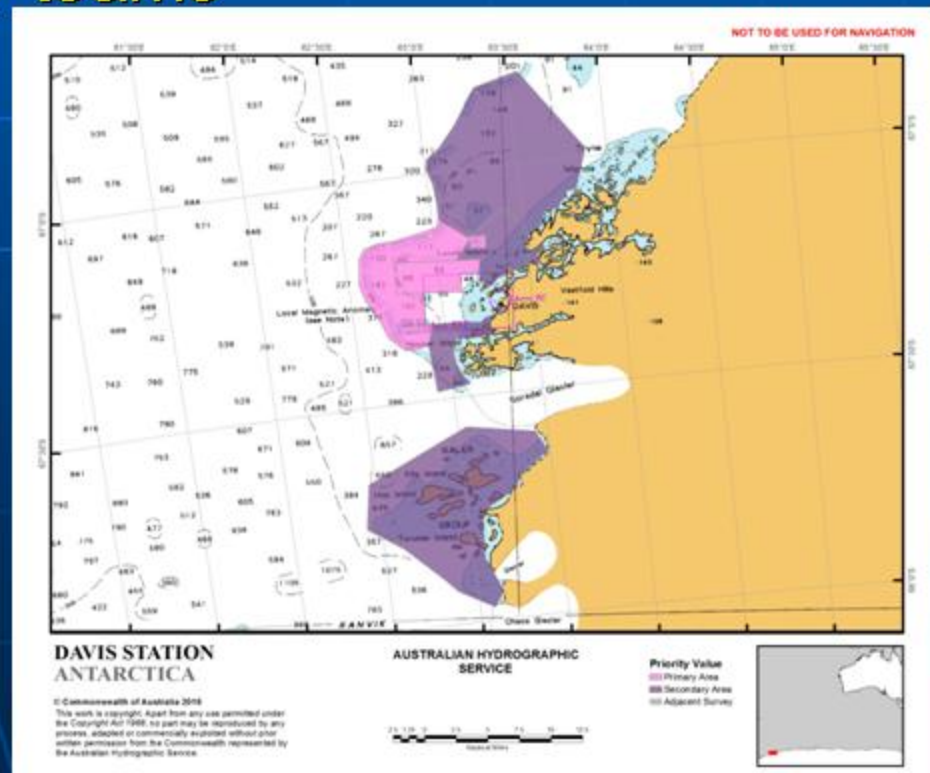
# Status of Relations with Other Organizations

- + scientific and polar institutes – new ice breaker for Australia
- + minimal cruise vessel activity in areas charted by Australia
- + no hydrographic data received from other organizations
- + hydrographic data provided to GeoScience Australia, who hold the bathymetric model for non-charting purposes

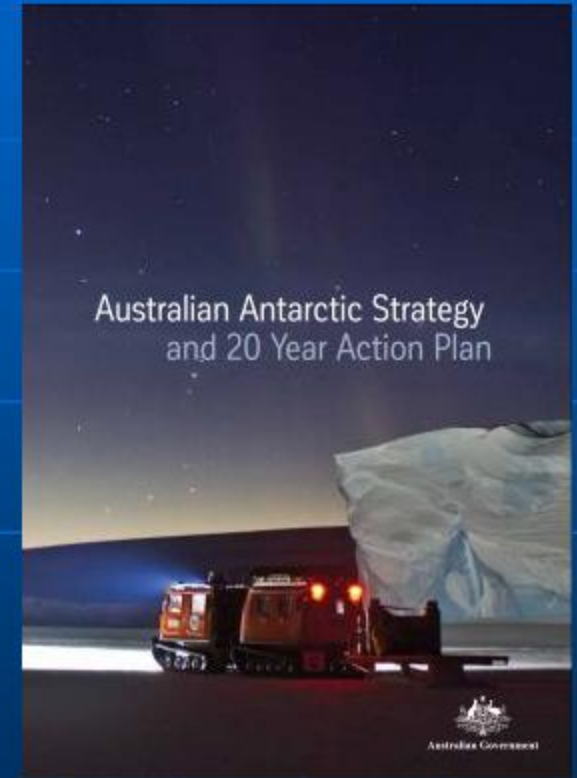


# Planned Activities for 2016-17

- + No new charts or editions planned for FY16/17
- + Planned survey at Davis Station (HI 590 – Dec16-Feb17) Geoscience Australia and Defence survey teams



# Any other matters of relevance to HCA





# Particular Issues that may require HCA Consideration :

- ✦ SWPHC and HCA ENC boundary
- ✦ The SWPHC notes ENC overlaps at the commission boundary. Eg cells RU1B0PF0 and RU1A2K00 overlap the SWPHC area by containing data north of 60 deg S.

