



Hydrographic Commission on Antarctica

National Report by
Republic of Korea

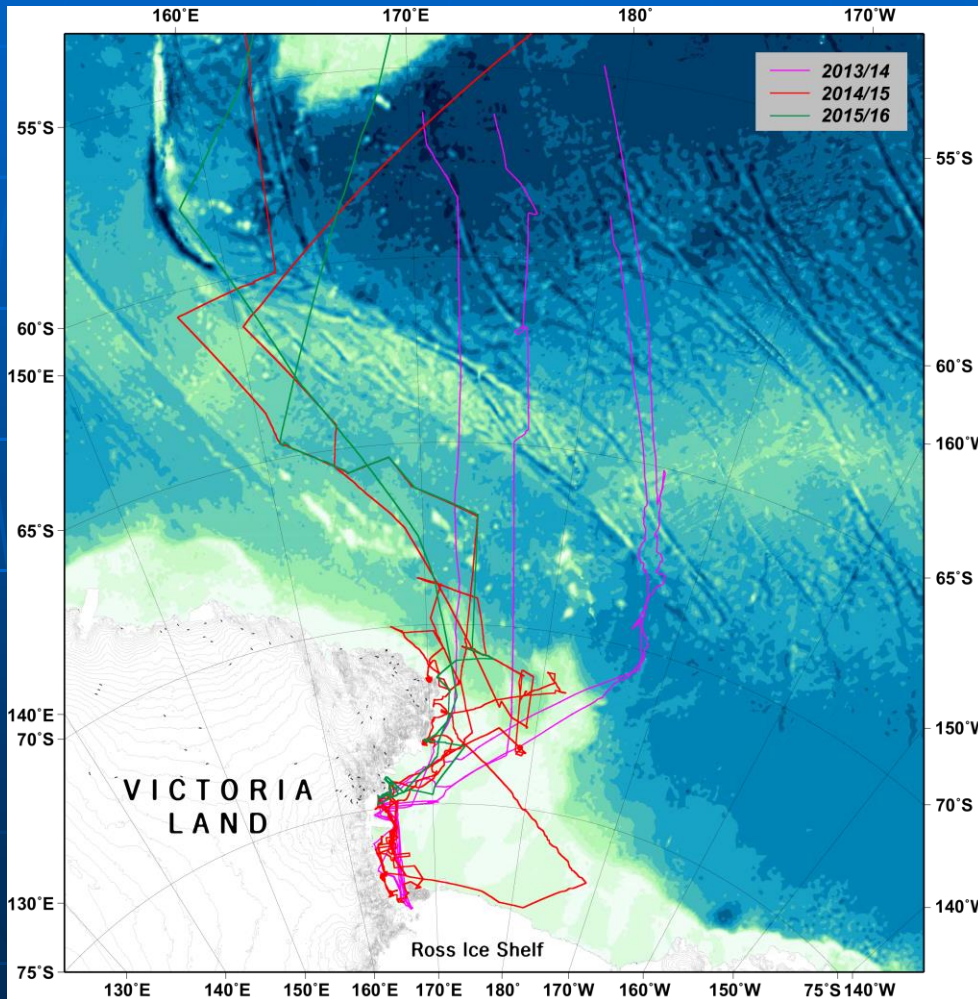
Status of Relations with Other Organizations

✦ scientific and polar institutes

- Korea Polar Research Institute : Icebreaker Araon with EM120



Survey and charting progress in Antarctica since last meeting (December 2013)

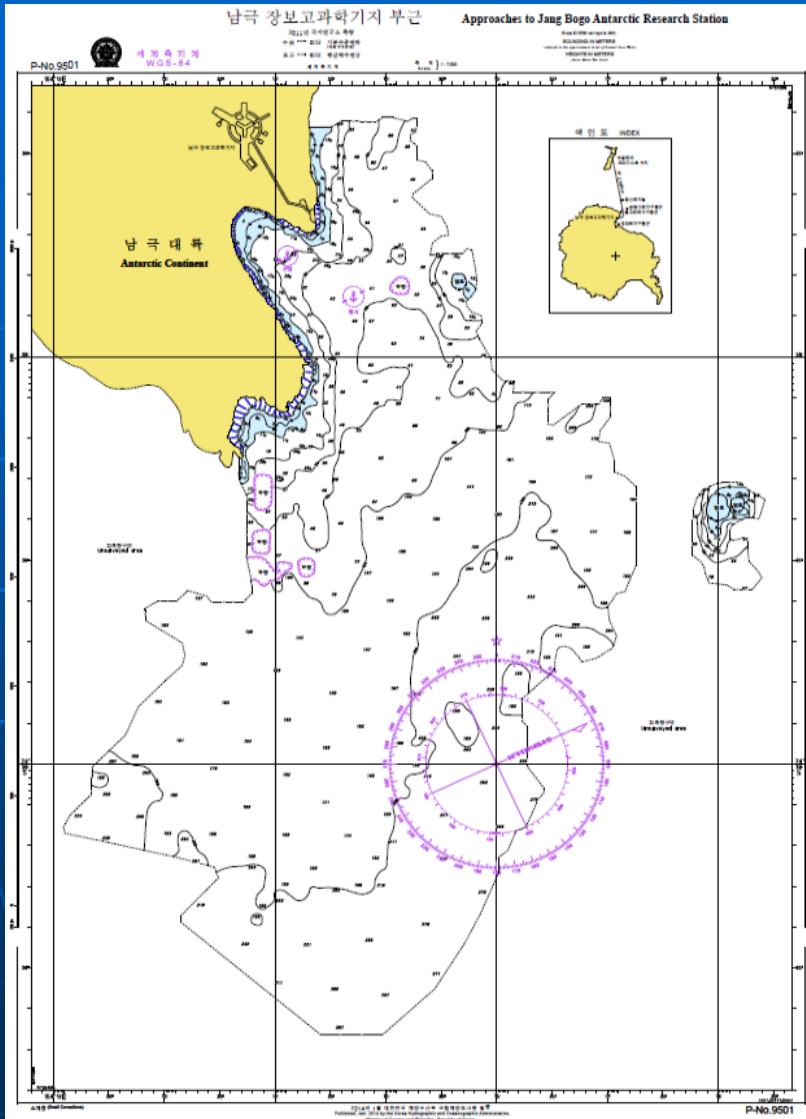


Bathymetric survey conducted only in the Ross Sea region

Data were collected when ship was sailing for transit and scientific survey.



Preliminary chart around Jang Bogo station



Bathymetric data were collected during the construction

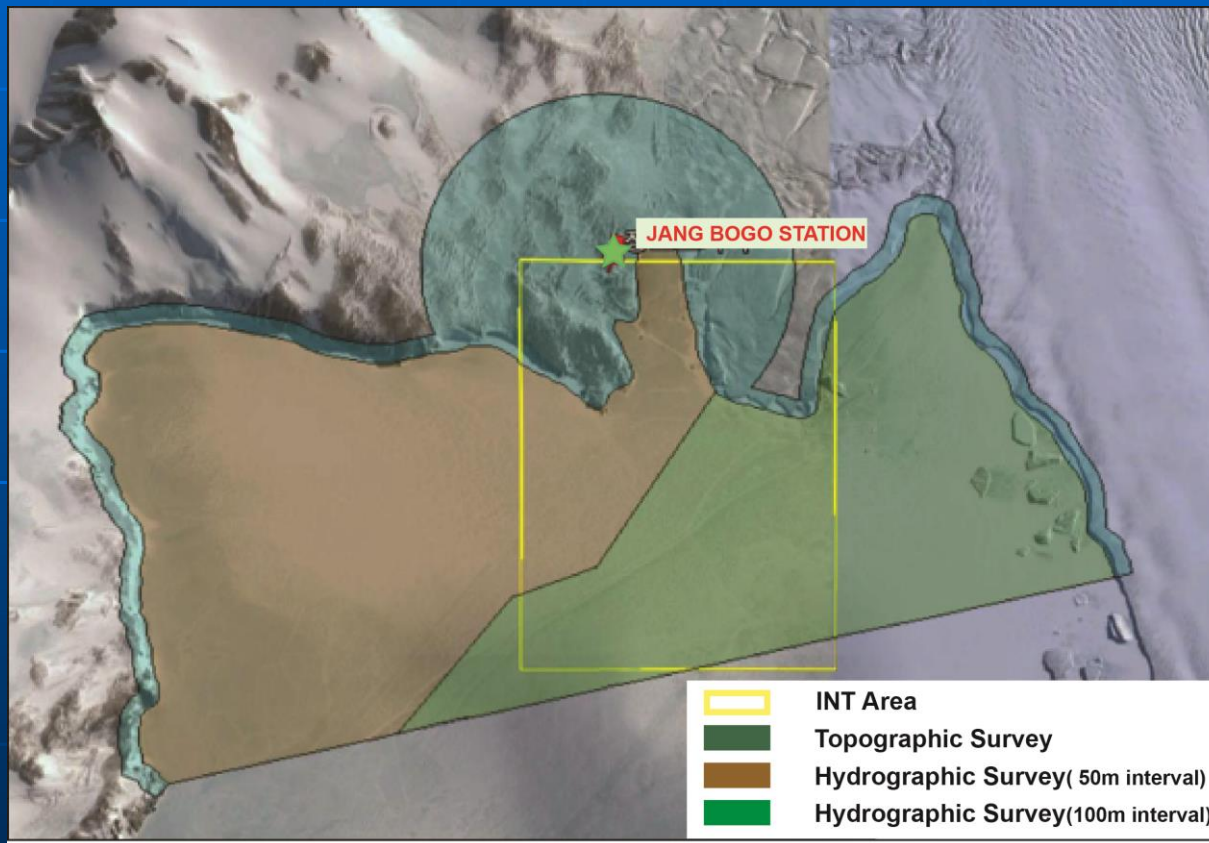
Compiled from data acquired close to Jang Bogo Station

Data acquisition didn't follow charting standard method



Planned Activities for 2016-17

- ❖ In 2016, KHOA launched a new program to produce a new chart.
- ❖ The program includes topographic survey as well as hydrographic survey.



Survey Plan

(INT area is changeable)



Coastal survey



3D Scanner

Total Station

UAV



Hydrographic Survey

✦ Multibeam Echosounder

- Shallow – small boat (rubber boat...)
- Deep - Icebreaker

	Survey Area
> 200m from the Coast	3 km ²
Depth < 100 m	19 km ²
Depth > 100 m	17 km ²

