



Hydrographic Commission on Antarctica

Report on the  
INT Chart and ENC Scheming and  
Production Status for Region M  
(HPWG Chair)

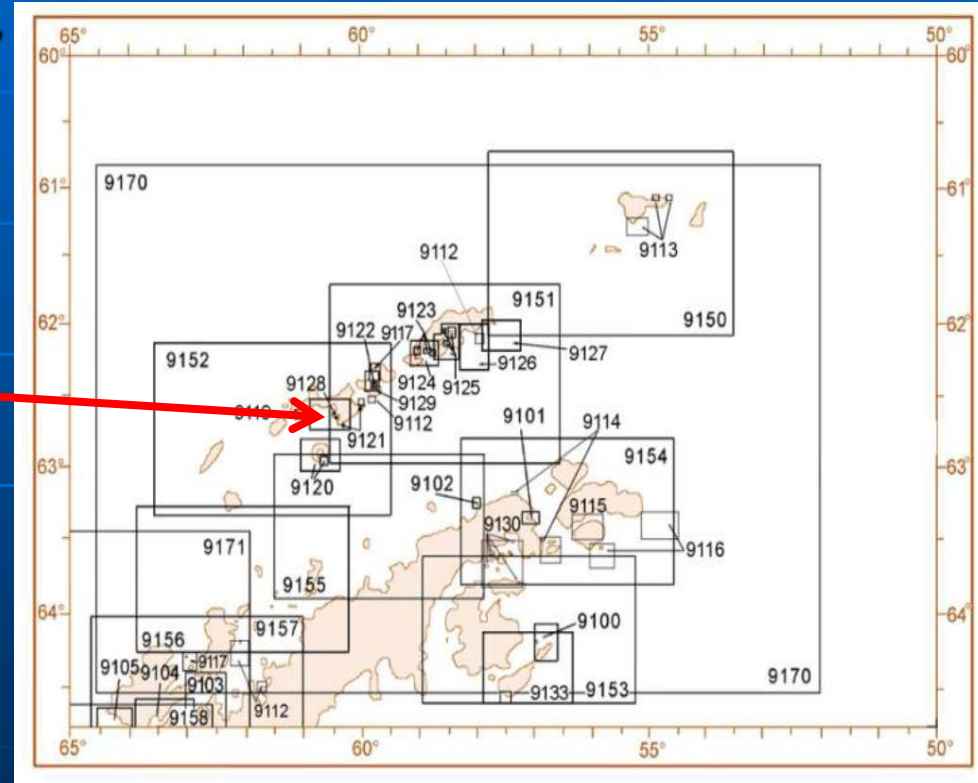
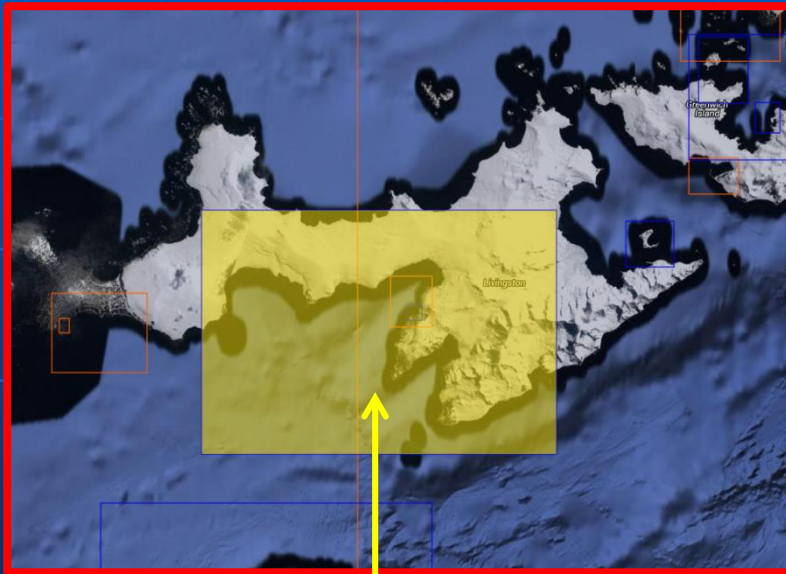
# INT chart and ENC progress since HCA13)

- ✦ Current number of charts in INT Region M is 113
- ✦ 79 charts published up to June 2016
- ✦ New INT charts published since HCA13 is 6, 9119(ES), 9135(CL), 909(NO) & 9118, 9107,9132 (UK)
- ✦ New ENCs published since HCA13 is 9, Argentina x1, Japan x3, Chile x1, Norway x1 & UK x3.
- ✦ New INT charts and ENCs planned for 2016/17 is 10, 9111 (AR), 9000 (IT), 905 (DE), 9125 (BR&PE), 9103 & 9104 (CL), 9117, 9131, 9159 & 9160 (UK)



# New INT chart proposals from Spain and UK

1. Spanish proposal to amend limits of INT9121 and to produce two new INT charts.



Existing limits of INT9121

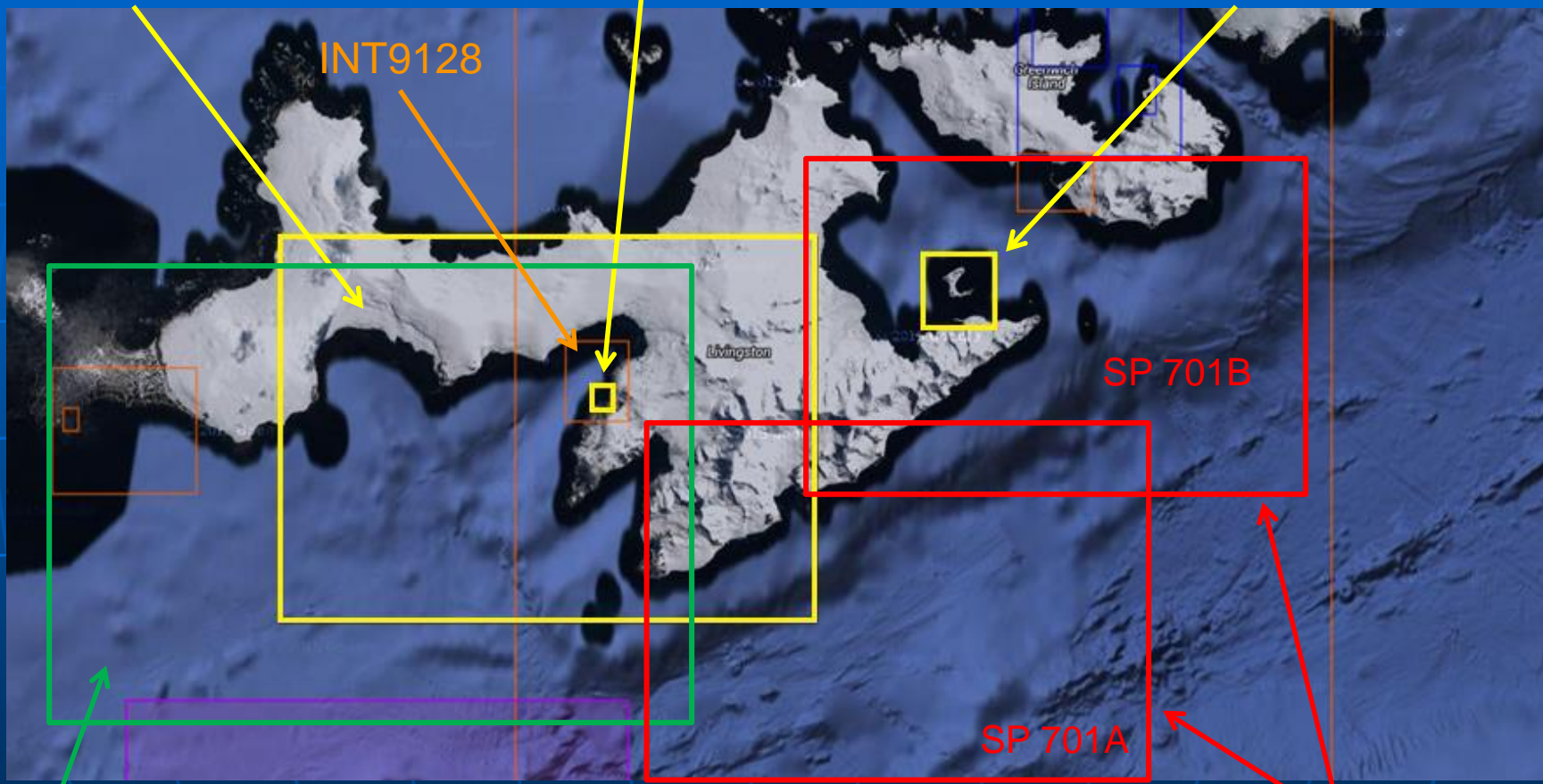


# Existing INT9121

Base Juan Carlos 1 (1:5,000)

Mainsheet (1:35,000)

Isla de la Media Luna (1:25,000)



Proposed new limits of INT9121

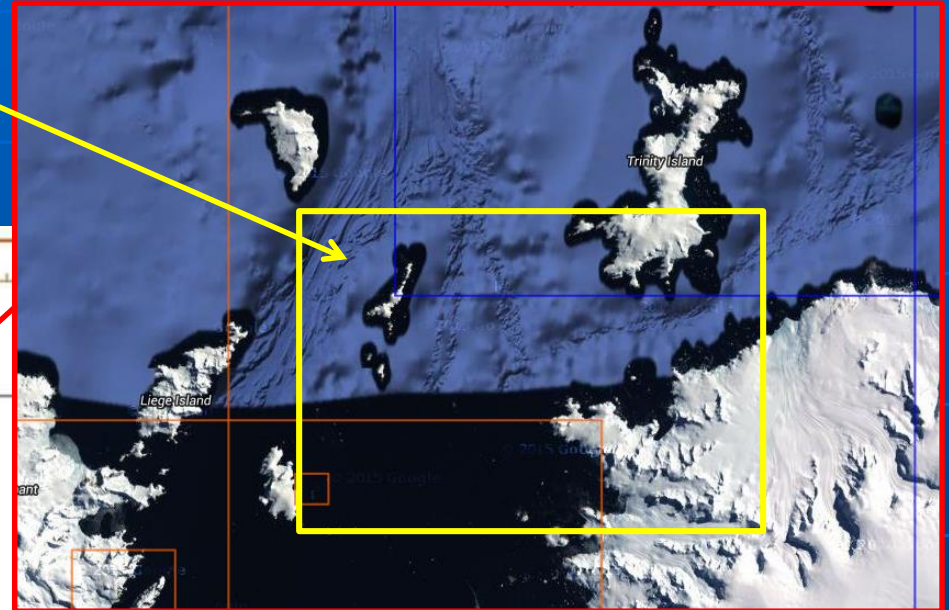
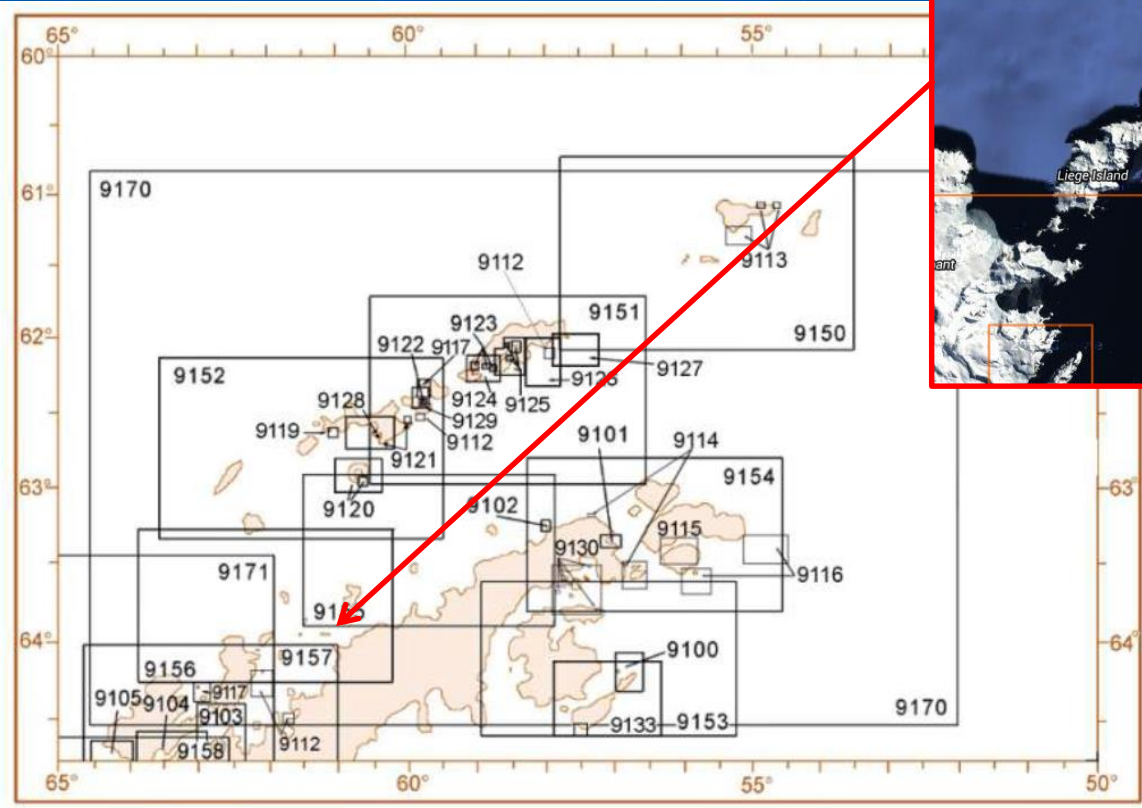
Proposed limits of two new INT charts 1:30,000



Note – Plan of Juan Carlos Base will be deleted from INT9121 and become INT9128. Plan Isla de la Media Luna will be deleted from INT9121 and be covered by INT\*\*\*\* (SP701B)

## ✦ 2. UK proposal for two new INT charts following study of IAATO visit statistics and AIS data.

New INT chart of Mikkelsen Harbour, Cierva Cove and Orleans Strait 1:50,000



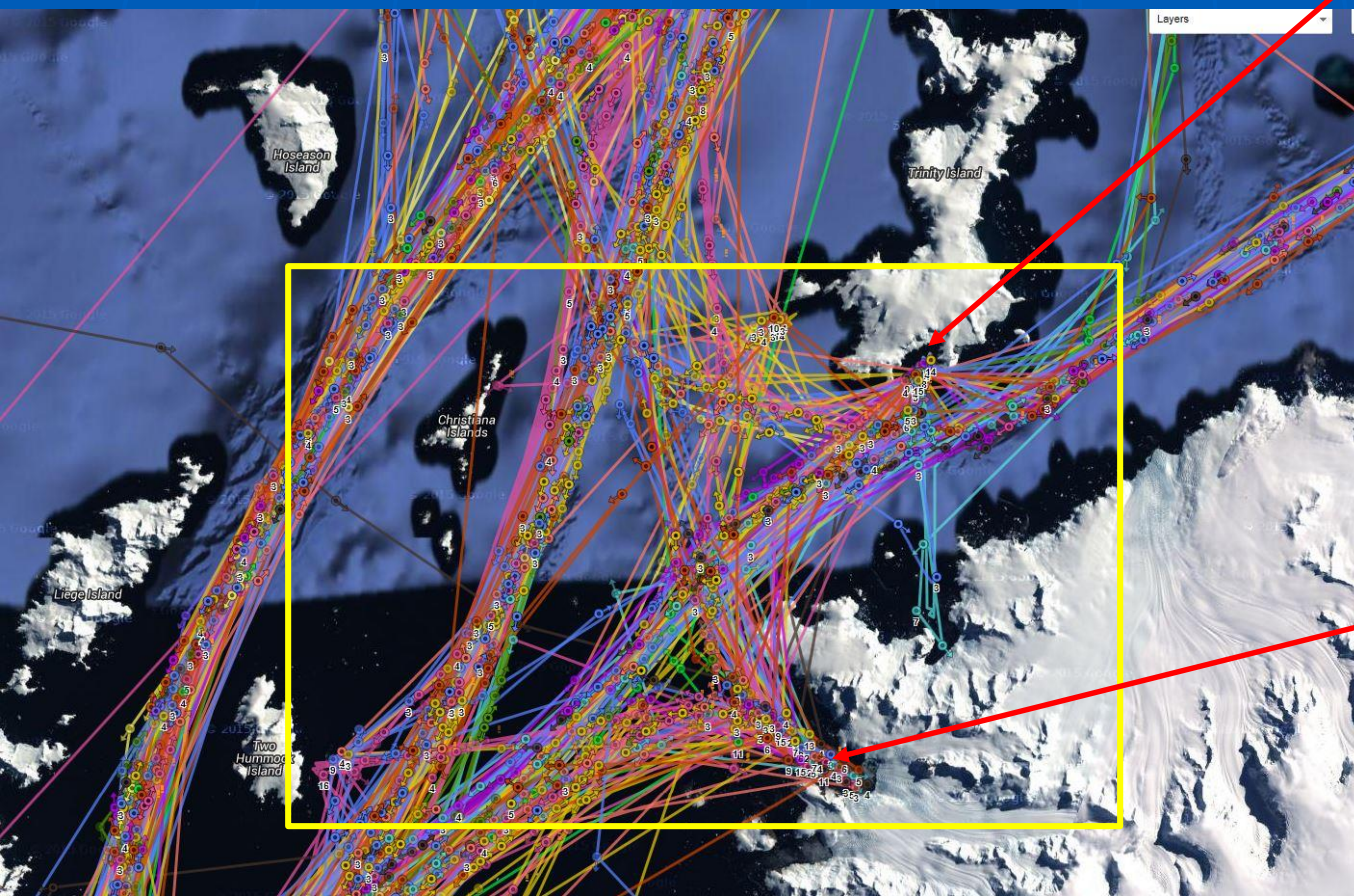
# Sample IAATO AIS data from 2015/16 season within the area of proposed new INT chart



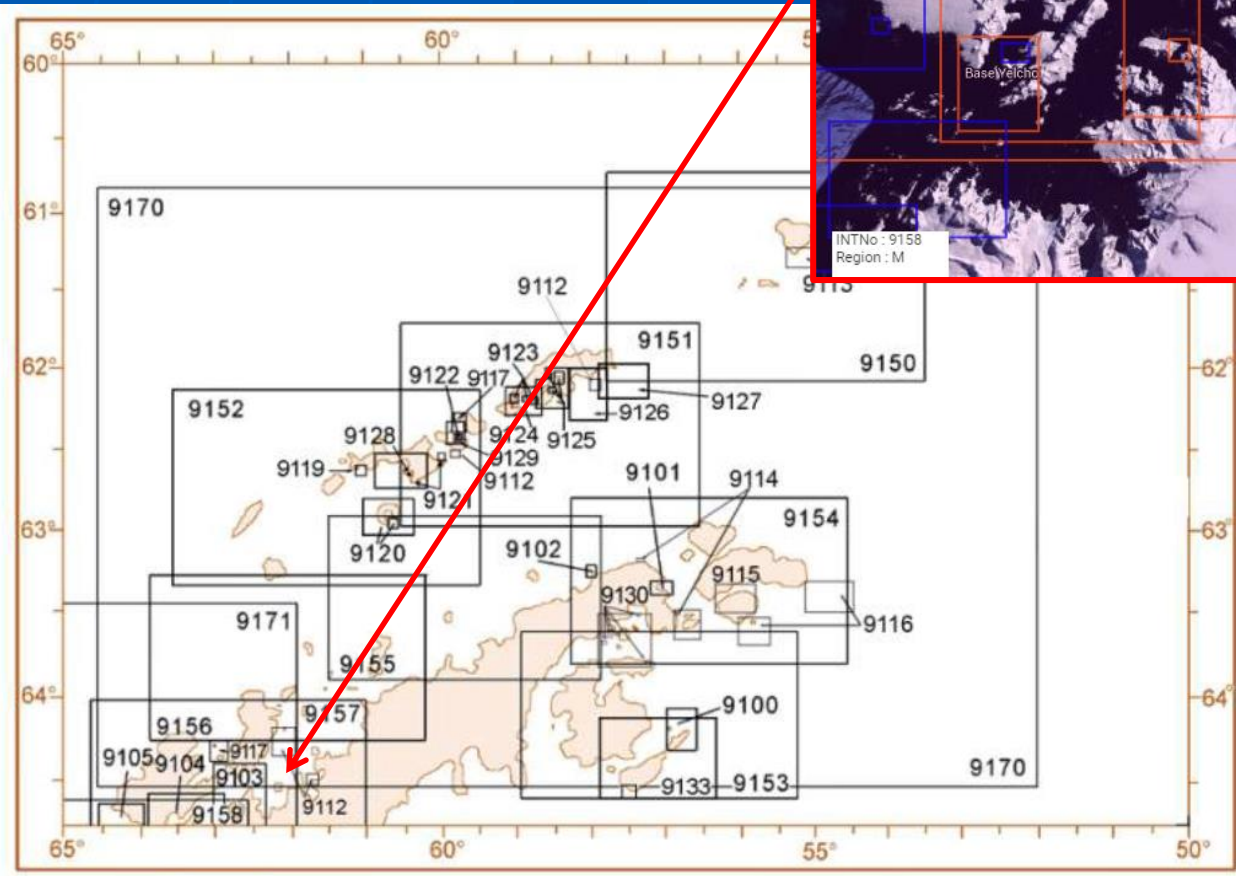
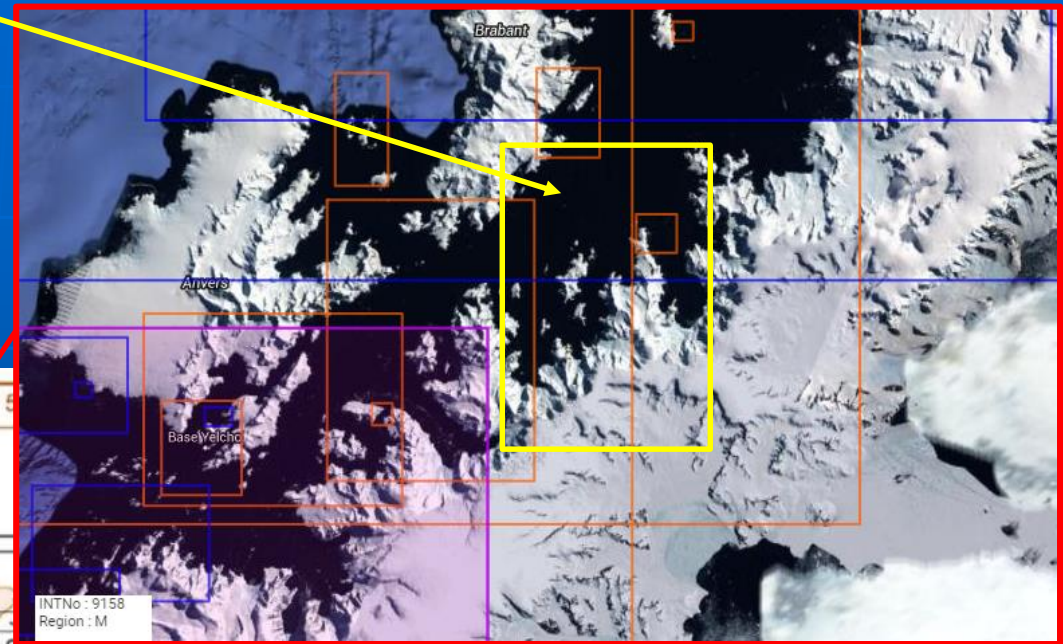
Mikkelsen Harbour  
8806 landings  
2015/16



Cierva Cove  
10377  
landings/cruises  
2015/16



# New INT chart of Wilhelmina Bay 1:50,000

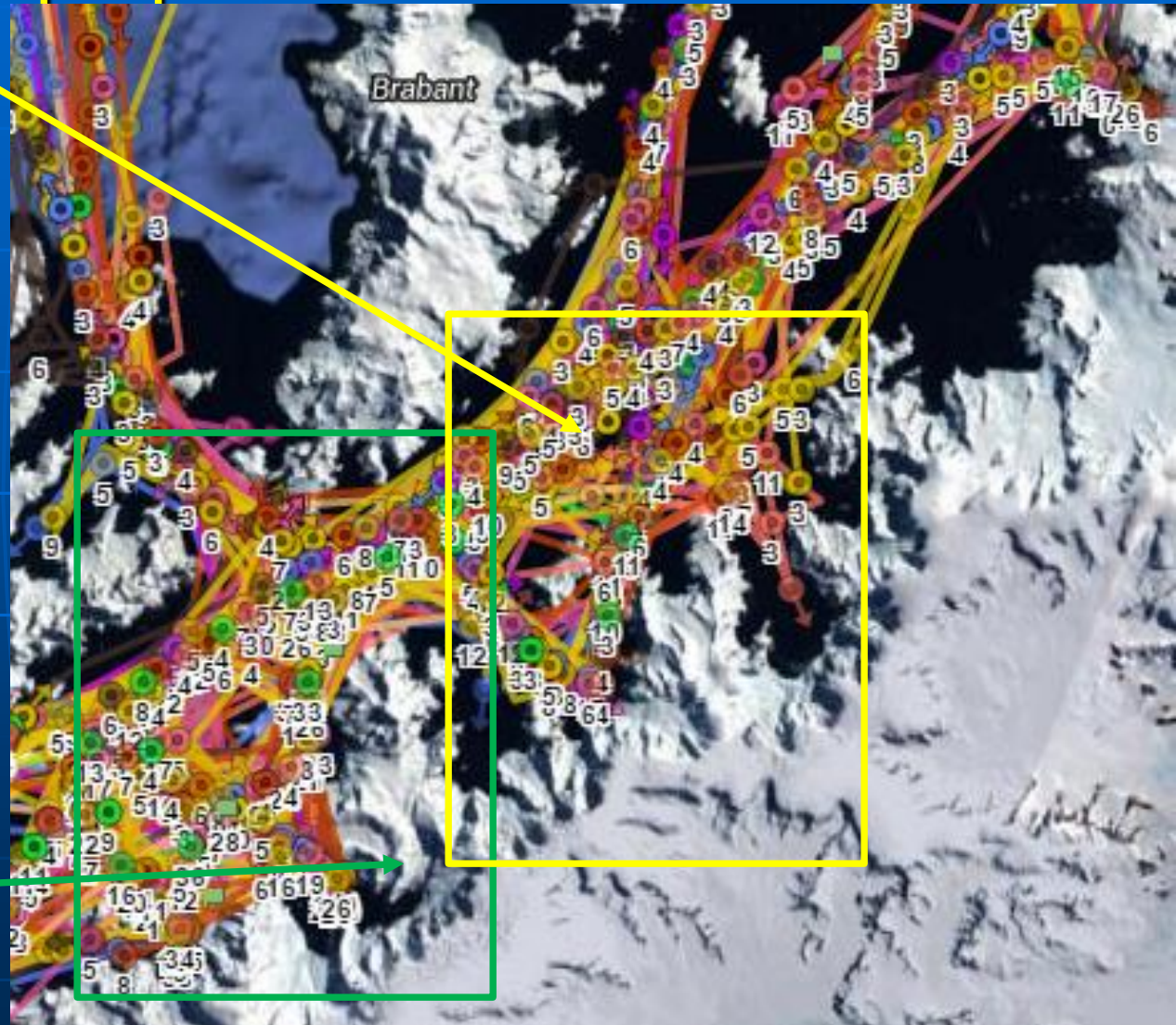


# Sample IAATO AIS data from 2015/16 season within the area of proposed new INT chart



Main landing/cruising sites  
Wilhelmina Bay 12626  
Enterprise Island 6675  
Portal Point 4790  
Foyen Harbour 1833

INT9103 1:50,000 (Chile)  
In preparation





# INTernational Chart Web Catalogue

- ✦ Successful launch of the new web based Catalogue
- ✦ Easy to use and very intuitive
- ✦ INT coordinator Region M attendance at IHB workshop in Monaco

The screenshot displays the International Chart Web Catalogue interface. At the top, the title "INTERNATIONAL CHART Web Catalogue" is visible, along with navigation links for "MANUAL DOWNLOAD" and "Manager". The interface includes a search bar with "Search" and "SeaWay" buttons, and a "CHART SEARCH" section. A notification banner indicates that the user is using a browser not supported by the Google Maps JavaScript API. The main area features a satellite map of the Antarctic region with several colored rectangular overlays (blue, orange, purple) highlighting specific chart areas. On the left, a "SEARCH Option" panel allows filtering by "INT Region" (set to M), "Prod Nation", "Pub Year", and "Status" (set to All). Below this is a "CHART List" showing 113 items, with entries such as "900:Ross Sea", "901:De Cape Goodenough ...", "902:Mawson and Davis Seas", "903:Sodruzhestva Sea an...", "904:Dronning Maud Land", "905:South Sandwich Isla...", "906:Weddell Sea", "907:Antarctic Peninsula", "908:Bryan Coast to Mart...", "909:Mount Siple - Cape ...", "9000:Terra Nova Bay to M...", and "9001:Cape Royds to Pram...". On the right, a "CHART Layers" panel shows options for "WORLDMap", "STREETSMap", "SATELLITEMap", and "BATHYMETRYMap", along with a "CHART Layers" section with checkboxes for "All Layers", "OverView", "General", "Coastal", "Approach", "Harbour", and "Berthing". The bottom of the interface shows a "Google" logo, "Map data ©2016 Imagery ©2016 NASA, TerraMetrics Terms of Use", and coordinates "134° 15.28' W / 78° 28.43' S".



# IHO HCA collaboration with IAATO

- ✦ Since HCA13 the Region M Coordinator has been given access to the IAATO AIS vessel tracker
- ✦ Great insight into ships movements and highlighting areas where INT chart/ENC coverage is lacking and requires larger scale charting
- ✦ MS are encouraged to investigate whether Government/Scientific vessel AIS data can be supplied to INT Coordinator

