



Hydrographic Commission on Antarctica

# National Report by

# ITALY



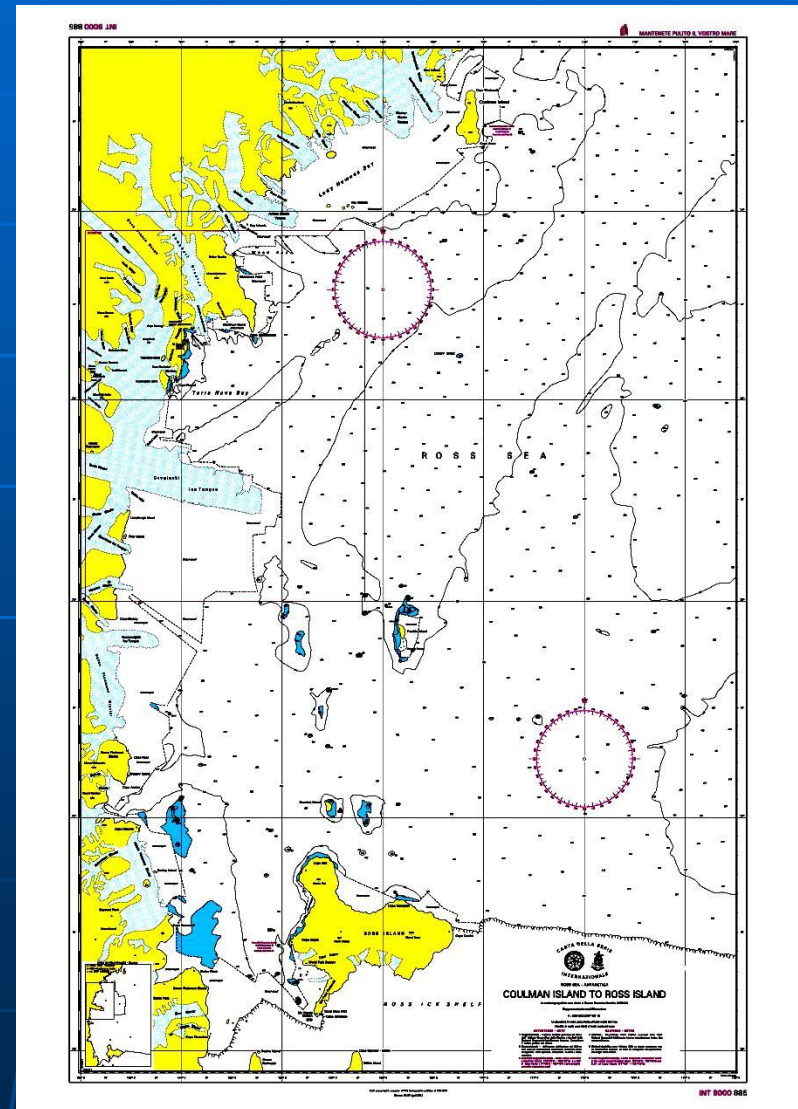
# Survey and charting progress in Antarctica since last meeting

## - New Charts Produced:

Chart 885INT9000 is completed and will be published shortly with ENC (expected to be submitted to IC\_ENC by October/November 2016).

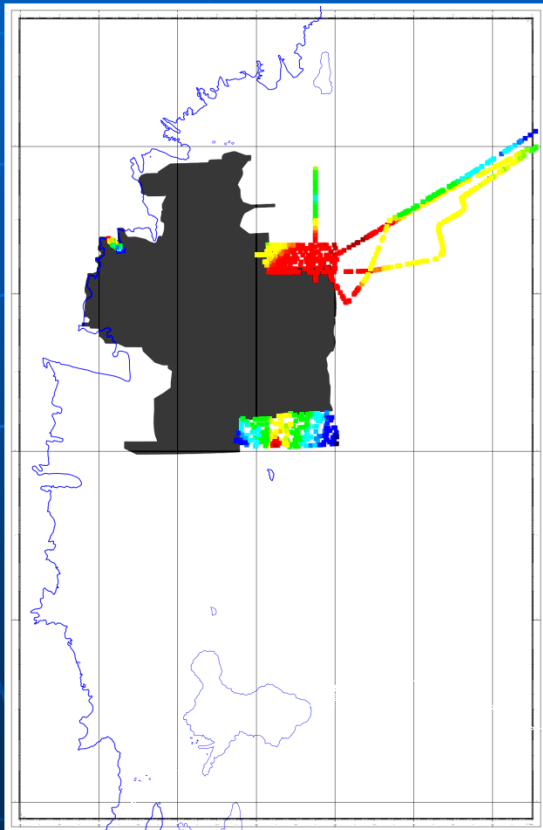
Thanks to NGA for having provided part of data

Chart n.	885INT9000
ENC n.	
Scale	1:500.000
Edition	Not yet published
Title	Coulman Island to Ross Island



# Survey and charting progress in Antarctica since last meeting

## Areas surveyed during 2014/2016



Italian H.O. is involved in survey and nautical cartographic activity. The hydrographic team works annually within PNRA project in which are included both land-based and maritime research activities.

The hydrographic team consist generally of two hydrographers, assisted by researchers during surveys.



# Status of Relations with Other Organizations

## Scientific and polar institutes

### National Antarctica Research Programm (PNRA)



Concordia station in the polar night" courtesy of Erick Bondoux, IPEV

Italy started its National Antarctic Program in 1985 with the formation of the *Programma Nazionale di Ricerche in Antartide* (PNRA) and the National Scientific Committee for Antarctica (CSNA) and Italy has Antarctic Treaty Consultative State status since 1987. Italy maintains two Antarctic research stations. Mario Zucchelli Station at Terra Nova Bay, which is open only in the summer season and a joint station (Italy and France shared a project), named Concordia, operated as a year round station since 2005.



# Status of Relations with Other Organizations

## Scientific and polar institutes

### Geodetic Observatory



*TNB1 continuous station monumentation*

<b><u>Position</u></b>	<b>ITRF2000 epoch 2003.0</b>
<b>Latitude</b>	<b>74° 41' 55,69965" S</b>
<b>Longitude</b>	<b>164° 06' 10,58957" E</b>
<b>Ellipsoidal height</b>	<b>72,27 m</b>

The Italian Geodetic Observatory in Antarctica focused on the establishment and maintenance of the geodetic framework in Antarctica, in order to provide measurements and analysis for the neotectonic characterization of a large area of Northern Victoria Land.

The Observatory is based on continuous GNSS (Global Navigation Satellite System) measurements, for the definition of a three-dimensional reference, and tide gauge measurements, for the definition of an absolute local and global elevation reference model.



# Status of Relations with Other Organizations

Cruise vessels

## Nave Italica

Length 121m

Beam 17 m

Displacement 5825 ton.



# Status of Relations with Other Organizations

## Cruise vessels:

IIM (Italian Hydrographic Institute) establish a joint research with OGS (National Institute of Oceanography and Experimental Geophysics), in particular for polar areas. The Institutes shared the data and will produce a new thematic maps over the areas.



## OGS Explora

Length 72,62 m

Beam 11,80 m

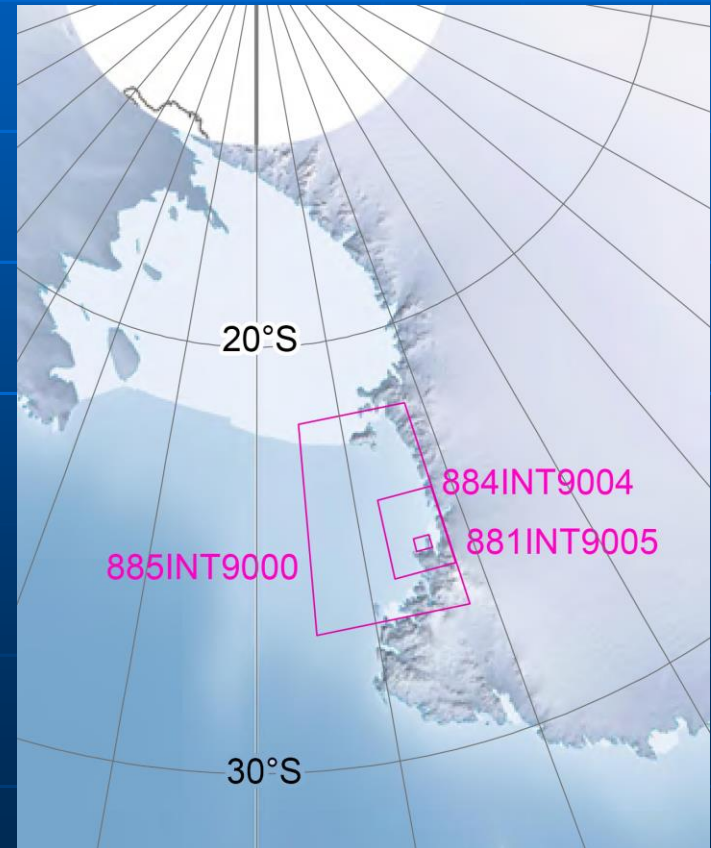
Displacement 1408 ton.



# Planned Activities for 2016-17

Survey will be conducted over the area of responsibility in order to update charts and fill the gap.

Hopefully 7/10 working days a year





# Any other matters of relevance to HCA

## Activity:

- IHO Working Groups
- GEBCO Arctic and Antarctic Mapping Meeting (12-13 June '16)
- Forum for Future Ocean Floor Mapping (17-18 June '16)
- GEBCO SCUFN (19-23 Sept. '16)

## Italian Hydrographers attended the following:

2014 - Course on Antarctic Navigation performed by Argentina

2015 - Antarctic Navigation on board Chile supply vessel

2016 - Antarctic Navigation on board «Almirante Oscar Viel» Chile icebreaker vessel





## Hydrographic Commission on Antarctica

