

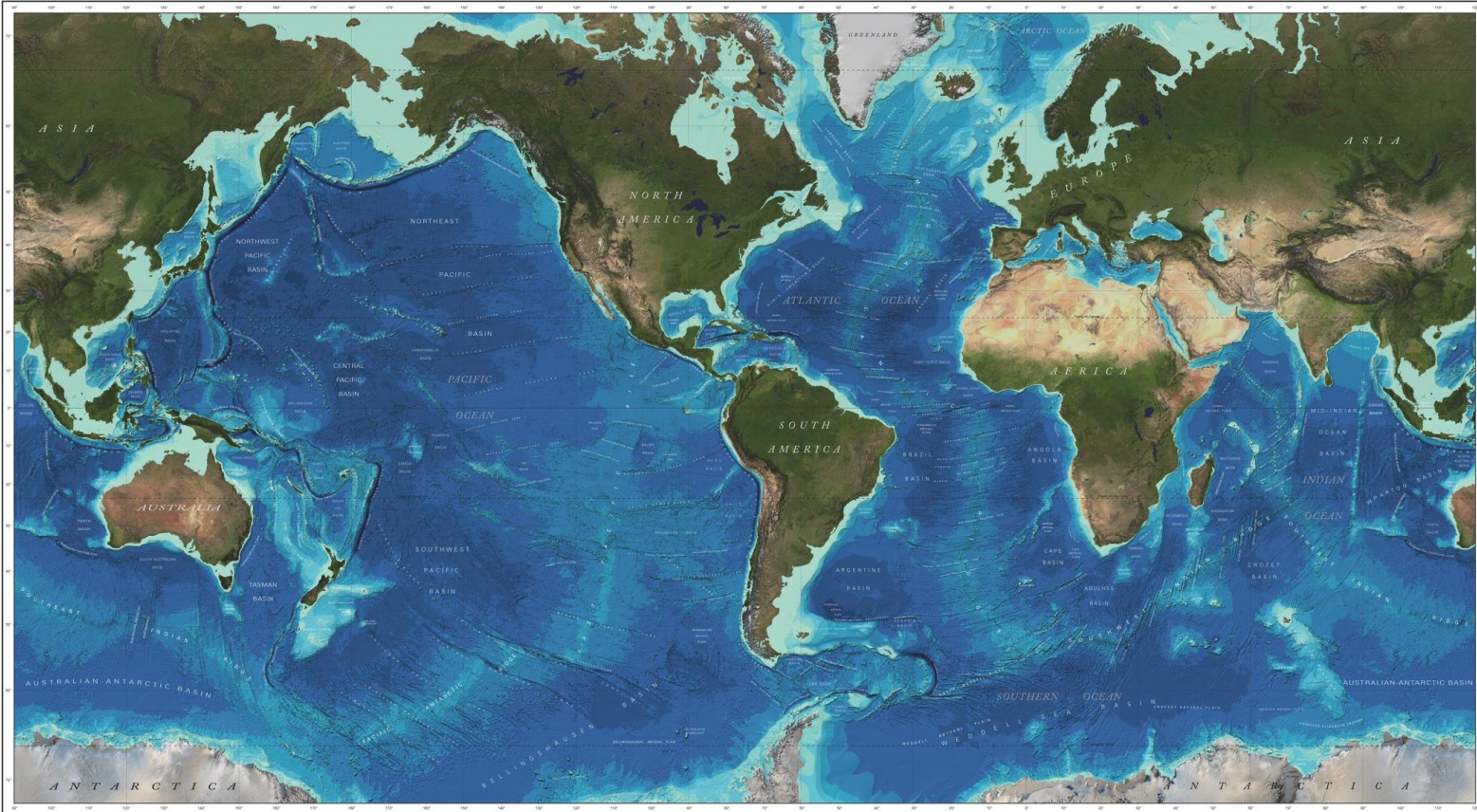


The International Bathymetric Chart of the Southern Ocean

IBCSO

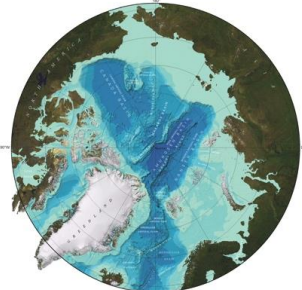
Boris Dorschel, Jan Erik Arndt

Alfred Wegener Institute Helmholtz Centre for Polar and Marine Research



2014:00

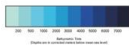
**GENERAL BATHYMETRIC CHART OF THE OCEANS (GEBCO)
WORLD OCEAN BATHYMETRY**



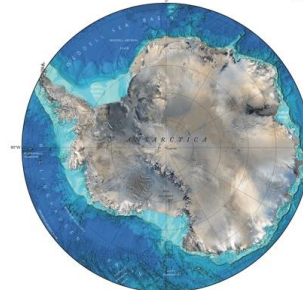
ARCTIC OCEAN
Scale 1:5,000,000 at 75 North Latitude

ABBREVIATIONS
The GEBCO chart consists of an international grid of depths and bathymetric features. The chart is based on the International Hydrographic Organization (IHO) S-30 Standard for Hydrographic Surveys, 1993. The chart is based on the International Hydrographic Organization (IHO) S-30 Standard for Hydrographic Surveys, 1993. The chart is based on the International Hydrographic Organization (IHO) S-30 Standard for Hydrographic Surveys, 1993.

Mercator Projection - Scale 1:30 000 000 at the Equator
Depths in corrected meters

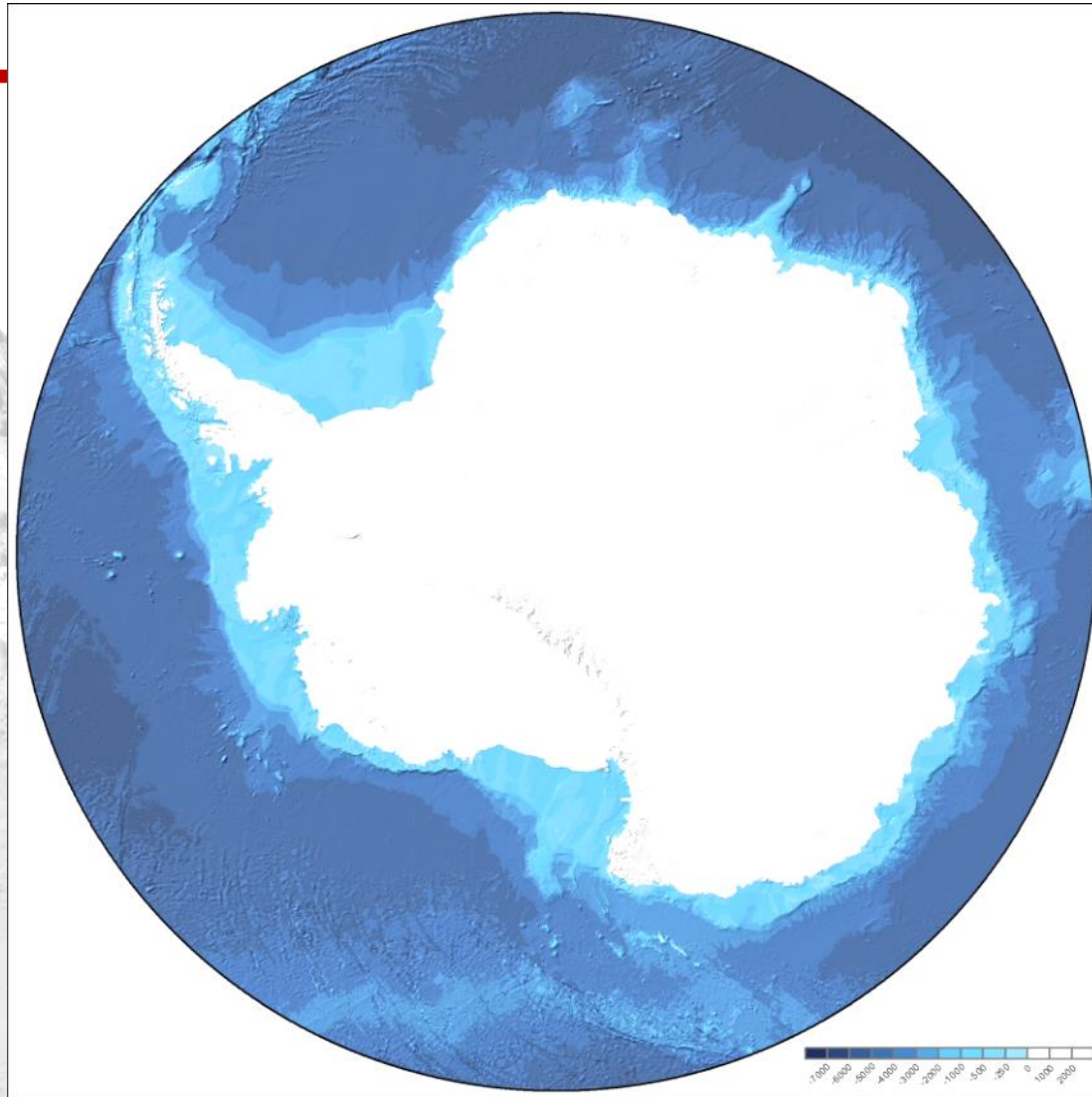


MAP PROJECTION
The GEBCO chart uses the Mercator projection. The chart is based on the International Hydrographic Organization (IHO) S-30 Standard for Hydrographic Surveys, 1993. The chart is based on the International Hydrographic Organization (IHO) S-30 Standard for Hydrographic Surveys, 1993.

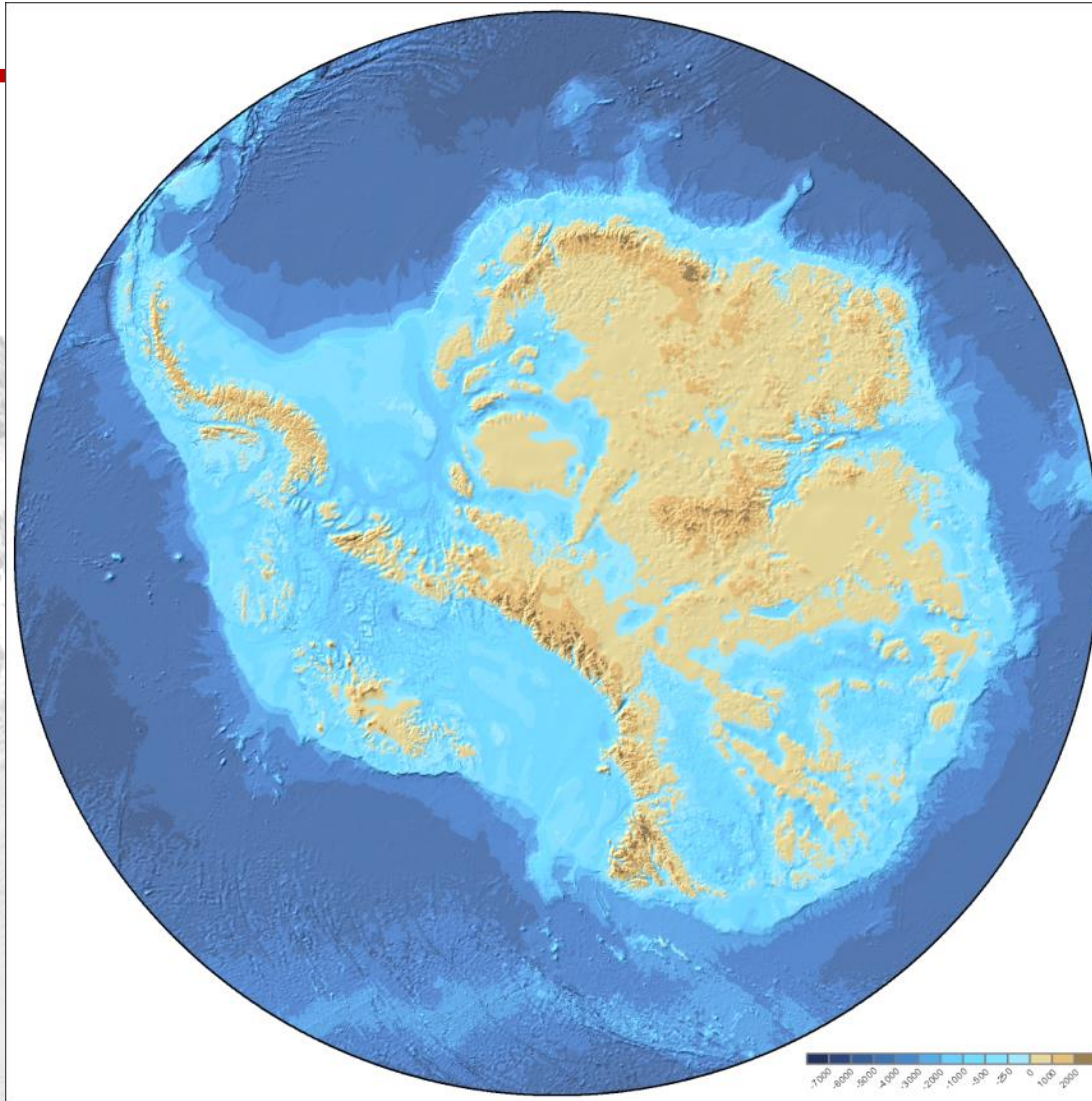


ANTARCTICA
Scale 1:5,000,000 at 75 South Latitude

IBCSO Version 1.0

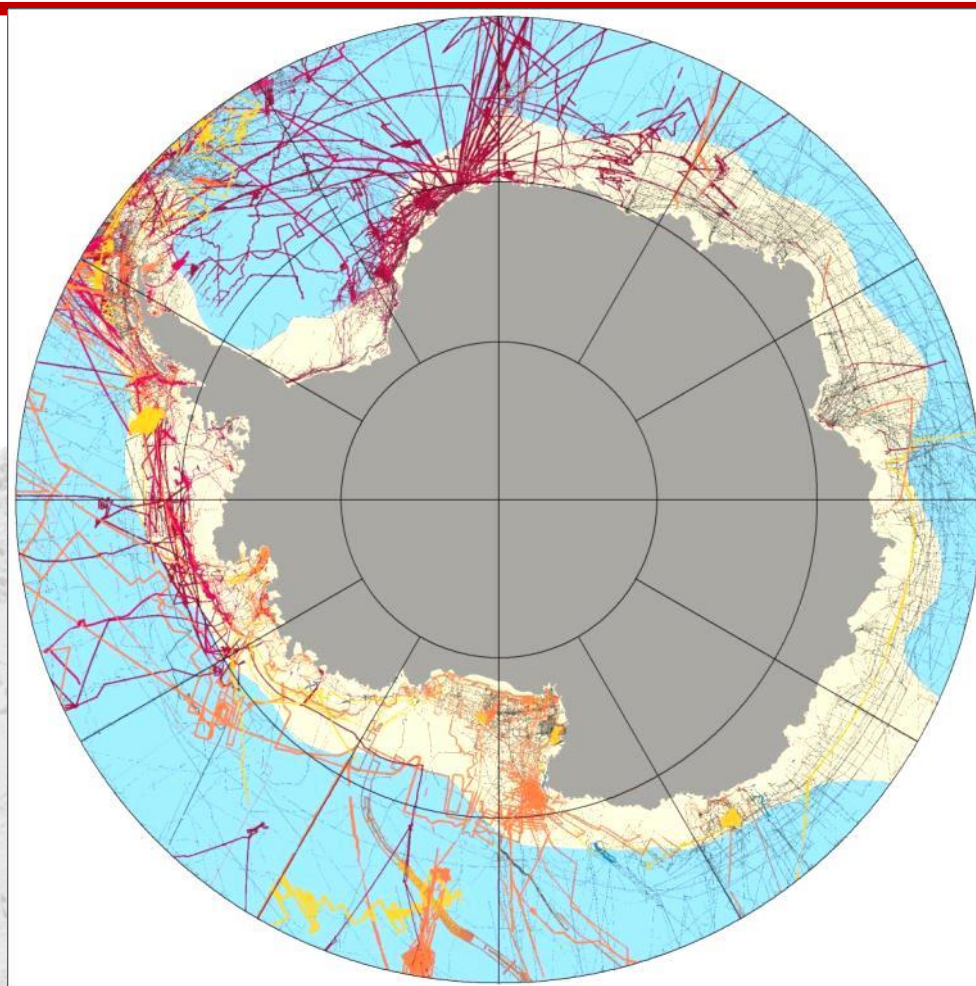


IBCSO Version 1.0



Data Distribution

- More than 4200 million soundings
- 15.4 % Multibeam
- 1.4 % Singlebeam



- Multibeam from AWI
- Multibeam from BAS
- Multibeam from MGDS & NGDC
- Multibeam from other institutions
- Singlebeam
- Various Data
- Interpolated
- GEBCO_08
- Bedmap2

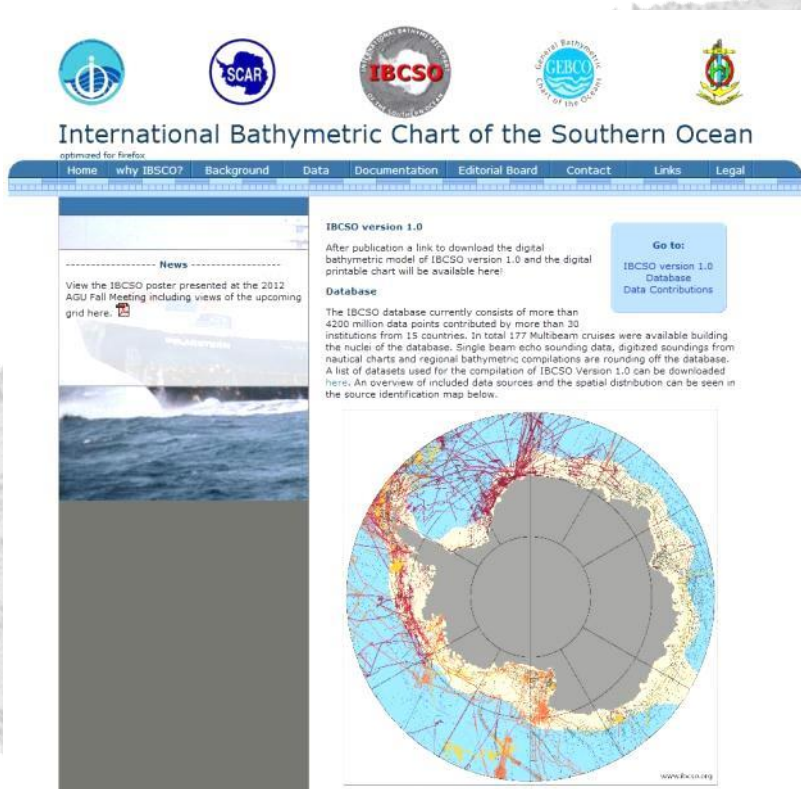


Data Contributors



Data retrieval

www.ibcso.org -> Data



The screenshot shows the IBCSO website homepage. At the top, there are logos for IBCSO, SCAR, and GEBCO. Below the logos is the title "International Bathymetric Chart of the Southern Ocean". A navigation menu includes links for Home, why IBCSO?, Background, Data, Documentation, Editorial Board, Contact, Links, and Legal. The main content area features a "News" section with a photo of a ship and a "Database" section with a circular bathymetric map of the Southern Ocean. A "Go to:" button points to "IBCSCO version 1.0 Database Data Contributions".

www.pangaea.de -> IBCSO



The screenshot shows the PANGAEA website interface. At the top right, it says "Not logged in (log in or sign up)". The main header identifies PANGAEA as a "Data Publisher for Earth & Environmental Science". Below this is the "Data Description" section for the IBCSO dataset. It includes a citation for Arndt et al. (2013), project information for "Marine Geophysics @ AWI (AWL_GeoPhy)", and further details with a link to a preview image. A table lists parameters such as Projection, Resolution, and Description. At the bottom, there is a "Download Data (login required)" section with a download link and a "View dataset as HTML" option.

Citation: Arndt, JE et al. (2013): The International Bathymetric Chart of the Southern Ocean (IBCSO) - digital bathymetric model. Unpublished dataset #805734, *In: Arndt, Jan Erik; Schenke, Hans Werner; Jakobsson, Martin; Nitsche, Frank-Oliver; Buys, Gwen; Goleby, Bruce; Rebesco, Michele; Bohoyo, Fernando; Hong, Jongkuk; Black, Jenny; Greku, Rudolf Kh; Udintsev, Gleb B; Barrios, Felipe; Reynoso-Peralta, Walter; Taisei, Morishita; Wigley, Rochelle (2013): The International Bathymetric Chart of the Southern Ocean (IBCSO) Version 1.0. Unpublished dataset #805736*

Project(s): Marine Geophysics @ AWI (AWL_GeoPhy)

Further details: http://hs.pangaea.de/Maps/bathy/IBCSO_v1/IBCSO_v1_preview.jpg

Comment: See further details link for an overview of the digital bathymetric model.

Parameter(s)	Name	Short Name	Unit	Principal Investigator	Method	Comment
1	Projection	Projection		Arndt, Jan Erik		
2	Resolution	Resolution		Arndt, Jan Erik		
3	Description	Description		Arndt, Jan Erik		
4	Universal resource locator/link to data file	URL data		Arndt, Jan Erik		NetCDF - GMT
5	Universal resource locator/link to data file	URL data		Arndt, Jan Erik		sd - Fledermaus
6	Universal resource locator/link to data file	URL data		Arndt, Jan Erik		GeoTIFF - ArcGIS

Size: 54 data points

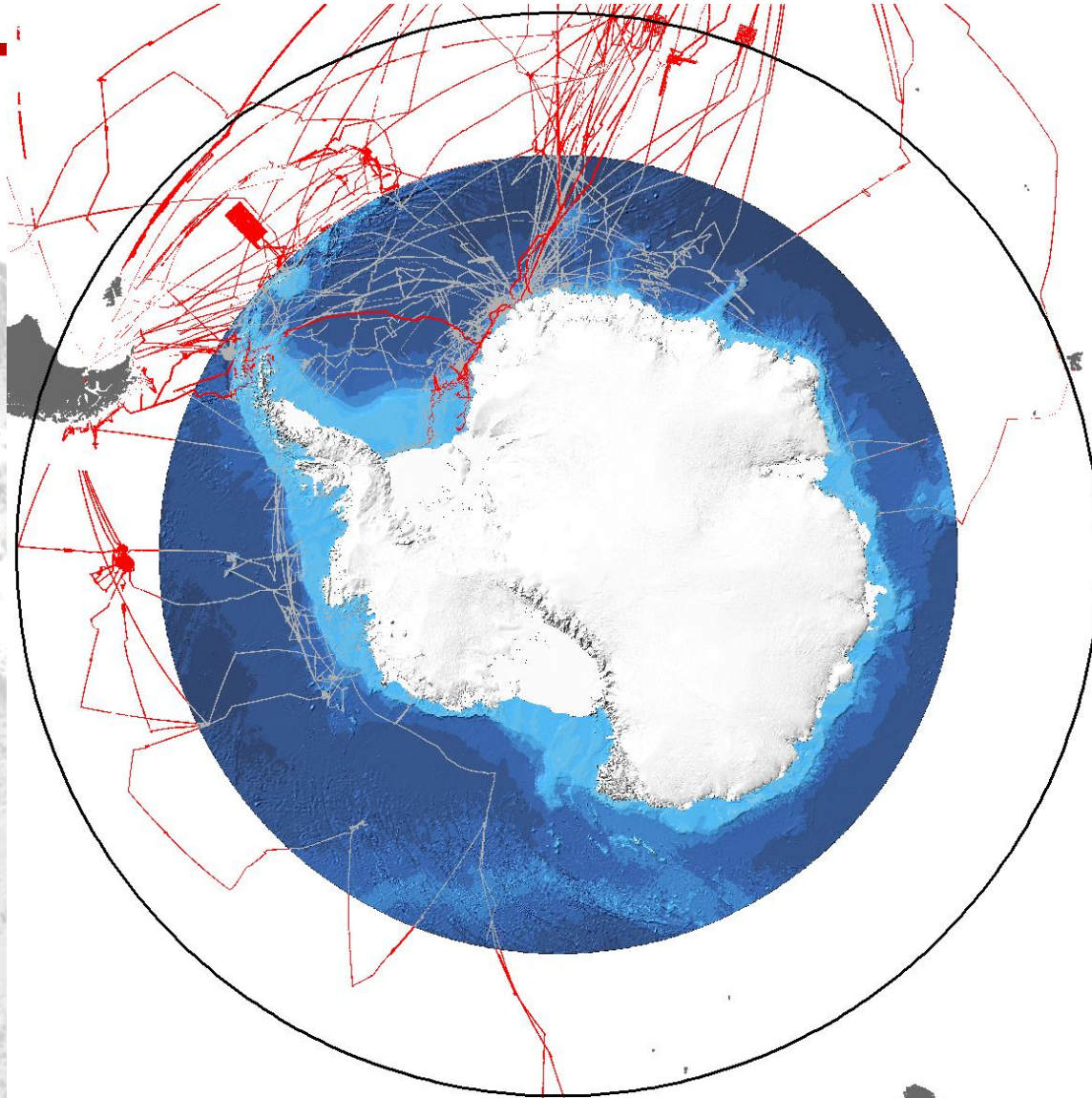
Download Data (login required)

Download dataset as tab-delimited text (use the following character encoding: ISO-8859-1: ISO Western (PANGAEA default))

View dataset as HTML

Arndt et al. (2013)

IBCSO V2.0 to 50°S



Organisations



- Cooperation with the International Hydrographic Organization (IHO) Hydrographic Commission on Antarctica (HCA)



- Regional Mapping project of General Bathymetric Chart of the Oceans (GEBCO)



- Operates under the joint auspices of the Intergovernmental Oceanographic Commission (IOC) (of UNESCO) and the IHO



- Expert Group of Scientific Committee on Antarctic Research (SCAR)



- Located at the Alfred Wegener Institute (AWI)