

IHO Hydrographic Commission on Antarctica (HCA)

National Report by BRAZIL



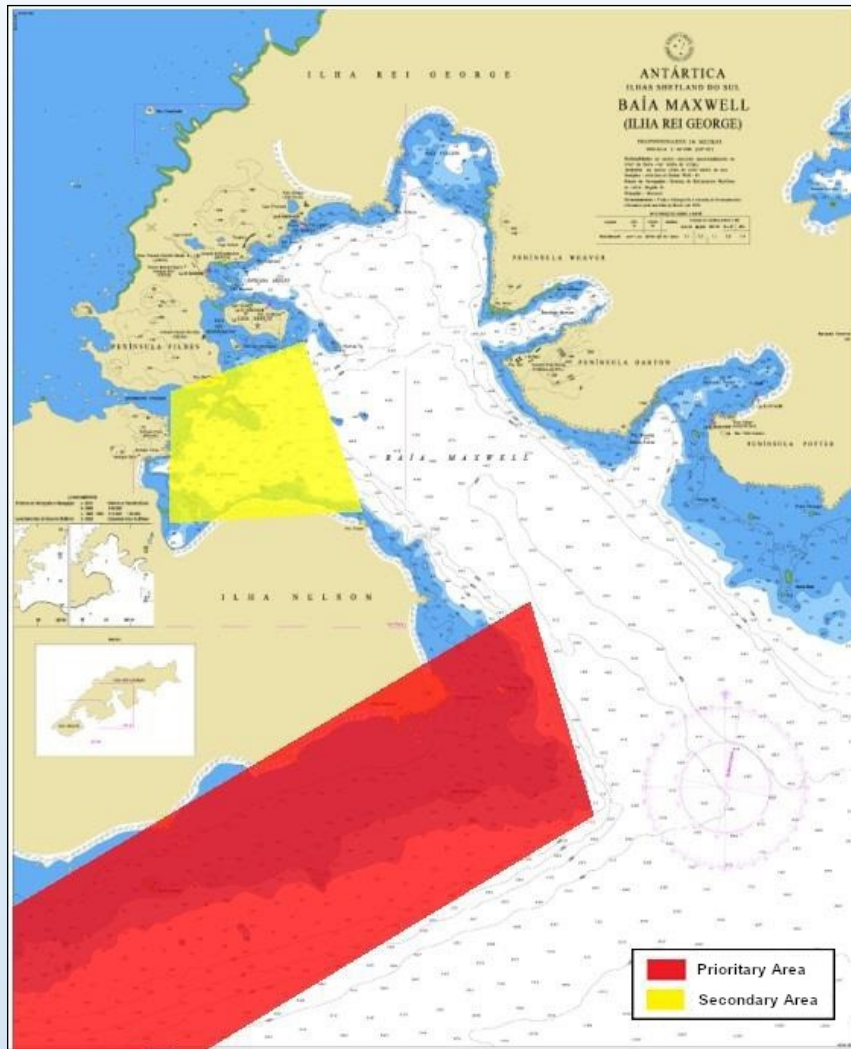
Survey and charting progress in Antarctica since HCA-15

- New charts produced (national, INT, ENC): XXX
- Areas surveyed: King George Bay (2018).
- Risk assessment studies: XXX
- Impact of Polar Code on your activities: XXX

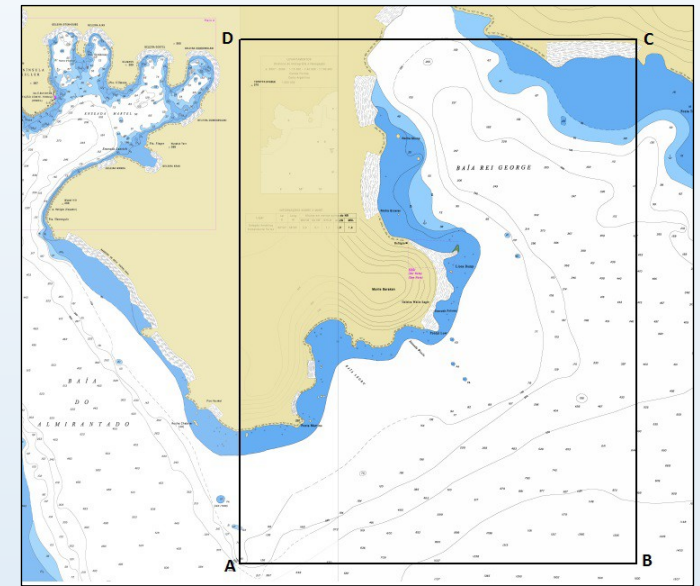
Survey and charting progress in Antarctica since HCA-15

The screenshot displays the ENC Coverage Catalogue interface. The main map area shows a portion of Antarctica with several survey cells highlighted in green and yellow. The cells are labeled with their respective identifiers: BR525121, BR425119, BR425121, BR425120, and BR325110. A search bar at the top left contains the text "Find cell's name or place fro". The right-hand side of the interface features a "Lista de Camada" (Layer List) panel with a search icon and a list of layers. The layers are organized into a "Camadas" section, with each layer having a checkbox and a menu icon. The checked layers are: BERTHING_RENC, HARBOUR_RENC, APPROACH_RENC, COASTAL_RENC, COASTAL_NonRENC, GENERAL_RENC, and OVERVIEW_RENC. The unchecked layers are: BERTHING_NonRENC, HARBOUR_NonRENC, APPROACH_NonRENC, GENERAL_NonRENC, OVERVIEW_NonRENC, SmallPorts, MediumPorts, Large Ports, INT_label_Web, and INT_boundary_Web. The top of the interface includes the title "ENC Coverage Catalogue", the update date "(updated: 21 May 2019)", and a disclaimer: "Please see base map disclaimer / Voir avertissement relatif aux fonds de cartes". The bottom left corner of the map area shows a scale bar for 30 km and coordinates: "53,277 -60,595 Graus".

Survey and charting progress in Antarctica since HCA-15



BR survey in 2019



BR survey in 2018
(still being processed)

Survey and charting progress in Antarctica since HCA-15

C-55 – ANTARCTIC PENINSULA (M)

Hydrographic surveying / Levés hydrographiques / Levantamientos hidrográficos						
Survey coverage Couverture hydrographique Cobertura hidrográfica		Depth < 200m Profondeur < 200m Profundidad < 200m			Depth > 200m Profondeur > 200m Profundidad > 200m	
	Adequately surveyed Correctement hydrographié Adecuadamente levantado	15	2	83	15	85
	Re-survey required Nécessitant de nouveaux levés Requiere nuevo levantamiento					
	Never systematically surveyed Jamais hydrographié systématiquement Nunca levantado sistemáticamente					
Notes Notes Notas	Brazil is programming hydrographic surveys for every Antarctic Commission, so as to keep bathymetric data updated and enhance safety to navigation on the main navigational corridors and in the region of the BR nautical charts.					

Nautical charting / Cartographie marine / Cartografía náutica											
Coverage of charts published Couverture des cartes publiées Cobertura de cartas publicadas			Offshore passage Navigation au large Pasaje offshore			Landfall and Coastal passage Atterrissage et navigation côtière Recalada y Pasaje costero			Approaches and Ports Approches et ports Aproches y puertos		
	Covered by INT or other paper charts meeting S-4 Couvert par des cartes papier INT ou autres conformes S-4 Cubiertas por cartas de papel INT o otras cumpliendo S-4	60	80	60	60	80	20	60	80	10	
	Covered by RNC meeting S-61 Couvert par des RNC conformes S-61 Cubiertas por RNC cumpliendo S-61										
	Covered by ENC meeting S-57 Couvert par des ENC conformes S-57 Cubiertas por ENC cumpliendo S-57										
Paper charts showing depth in meters Cartes papier avec les profondeurs en mètres Cartas de papel con profundidades en metros			Paper charts referenced to a satellite datum Cartes papier rapportées à un système géodésique satellitaire Cartas de papel referidas a un datum satelital			Data source Source des données Origen de los datos					
Notes Notes Notas	Brazil published 4 INT charts in the region (6 planned - 67%)										

Status of Relations with Other Organizations

- Scientific and polar institutes: several national institutions are involved in the Antarctic Campaign (OPERANTAR): Science and Technology Ministry (MCTI), Space Research Institute (INPE), University of Rio Grande (FURG). Contributions and exchange of data and knowledge with UKHO, DHN/PE and SHOA/CL.
- Cruise vessels: XXX
- Hydrographic data received from other organizations: UKHO and DHN/PE.
- Hydrographic data provided to other primary charting authorities and/or GEBCO: SHOA/CL and GEBCO.

Planned Activities for 2019-2020

- New charts: no new charts are planned for the next 2 years.
- New surveys: new surveys are going to be conducted according to the National Chart and Hydrographic Plan for Antarctica (Maxwell Bay area).

Any other matters of relevance to HCA



New facilities of the
Comandante Ferraz Antarctic
Station (EACF)
(opening by March 2020)

Brazilian National Report - HCA-16



Thank you!