

MESOAMERICAN AND CARIBBEAN SEA HYDROGRAPHIC COMMISSION
13th Meeting, La Antigua - Guatemala, 19-23 November 2012

NATIONAL REPORT - Colombia

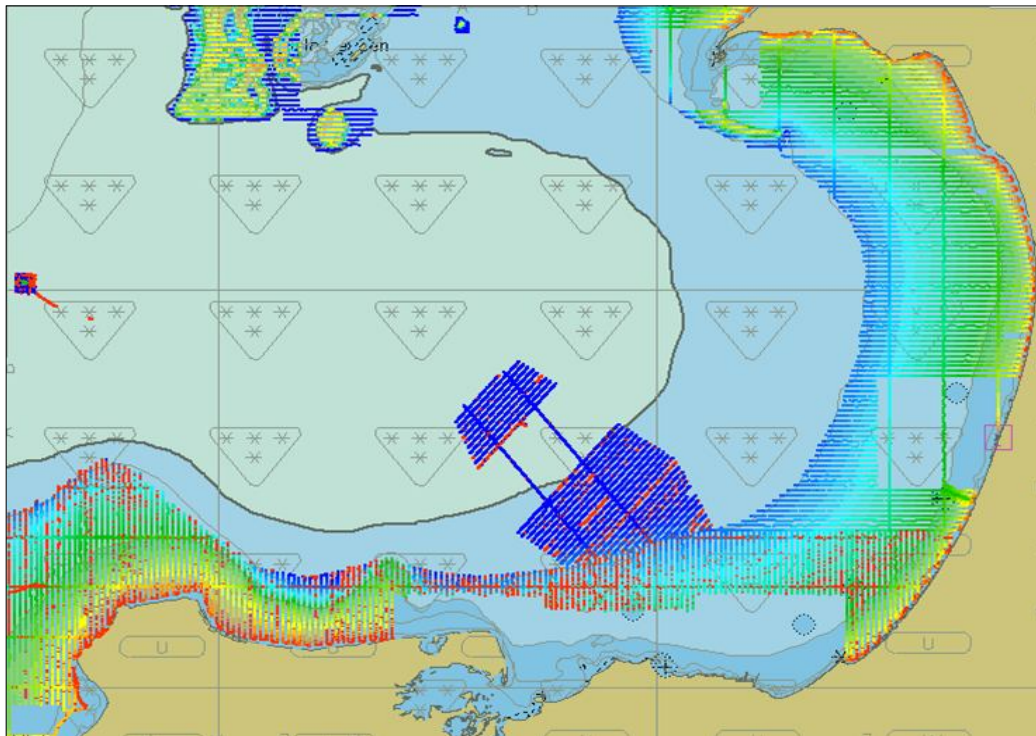


1. Hydrographic Office /Service:

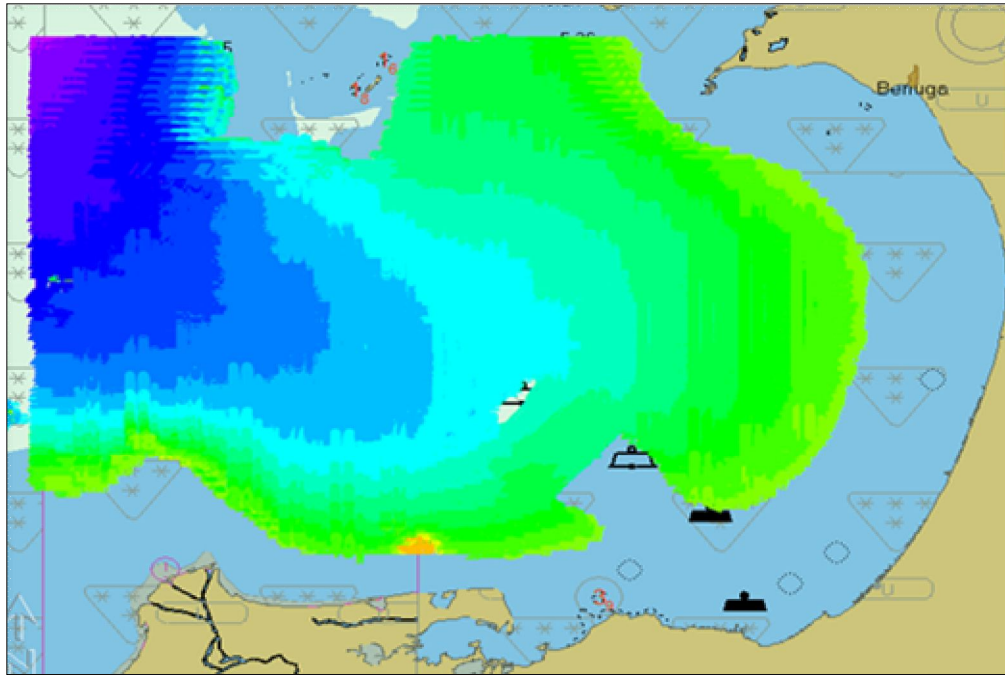
Dirección General Marítima - DIMAR
Centro de Investigaciones Oceanográficas e Hidrográficas – CIOH

2. Surveys (06)

Bahía de Cartagena
Golfo de Morrosquillo
Aproximación a la isla de Providencia
Río Magdalena (canal navegable, desembocadura)
Canal de acceso a la Estación de Guardacostas de San Andrés



Área levantada 618 Golfo de Morrosquillo – Shallow waters

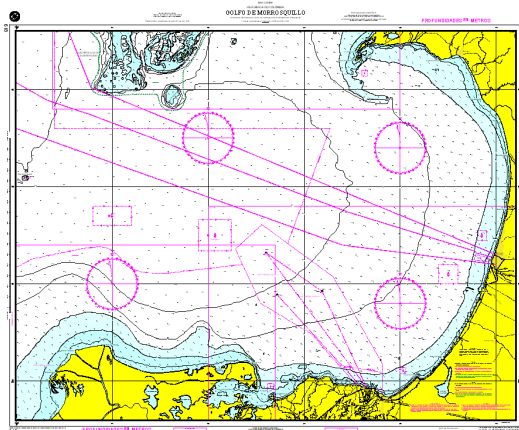


Área levantada 618 Golfo de Morrosquillo – Depth waters

3. New charts and updates: (6 news and 09 updates)

- 010 Barranquilla a Península de Paraguana
- 262 Bahía de Cartagena
- 263 Bahía Interna de Cartagena
- 618 Golfo de Morrosquillo
- 654 Aproximación a Isla de Providencia
- 833 Canal de Acceso a la Bahía de Cartagena

- 011 Canal de Panamá a Barranquilla
- 040 Península de La Guajira
- 041 Barranquilla a Riohacha
- 042 Isla Fuerte a Barranquilla
- 043 Cabo Tiburón a Isla Fuerte
- 253 Rio Magdalena
- 407 Puerto Colombia a Santa Marta
- 409 Bajo Tortuguilla a Punta Canoas
- 612 Aproximación a Barranquilla

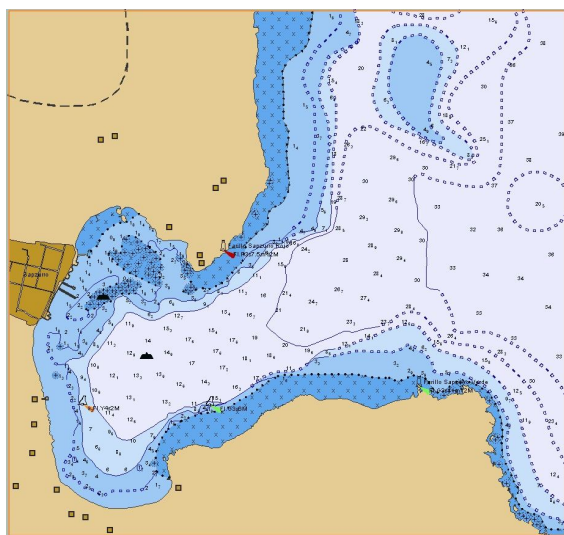


Nautical route of Caribbean Colombian for sailing

12 Nautical charts. Esc 1:5.000 to 1:15.000

New ENC according new ECNN (25)

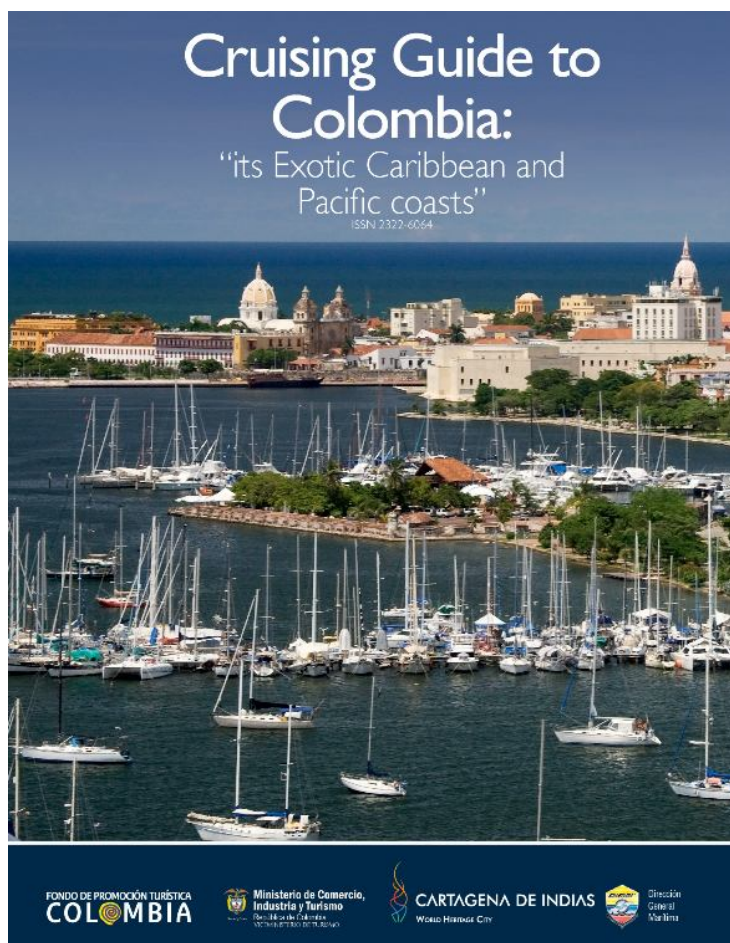
| | |
|----------|---|
| CO200008 | Cabo Gracias a Dios a Santa Marta |
| CO300020 | Pedro Bank a Gorda Bank |
| CO300021 | Cabo Gracias a Dios a Isla de Providencia |
| CO300022 | Isla de San Andrés a Golfo de los Mosquitos |
| CO300023 | Golfo de los Mosquitos a Punta Mosquito |
| CO300024 | Cabo Tiburón a Bahía de Cartagena |
| CO300025 | Punta Canoas a Santa Marta |
| CO300026 | Punta Chengue a Punta Espada |
| CO400201 | Isla de San Andrés |
| CO400244 | Bahía de Taganga A Ciénaga |
| CO400606 | Aproximación a Riohacha |
| CO400612 | Aproximación a Barranquilla |
| CO400615 | Punta Barbacoas A Punta Canoas |
| CO400618 | Golfo de Morrosquillo |
| CO400660 | Aproximación a Cayos de Serranilla |
| CO400662 | Bajo Alicia |
| CO500200 | Puerto de San Andrés |
| CO500213 | Serrana (Cayo Serrana) |
| CO500218 | Isla de Providencia |
| CO500229 | Bahía Portete |
| CO500253 | Río Magdalena (Bocas de Ceniza – Puente Laureano) |
| CO500261 | Bahía de Cartagena |
| CO500804 | Bahía de Santa Marta |
| CO600843 | Bahía de Cartagena (Canales de Acceso) |
| CO600879 | Bahía de Sapzurro |



CO600879 Bahía de Sapzurro

4. New Publications and updates

Guía Náutica turística de Colombia
 Atlas Cartográfico de los Océanos y Costas de Colombia 4th version
 Resumen Aviso a los navegantes 2011
 Actualización Derrotero digital
 Ayudas a la navegación



5. MSI

| SERVICE | YES | NO | PARTIAL | NOTES |
|-----------------------------------|-----|----|---------|-----------------------------|
| Local Warning | X | | | |
| Coastal Warnings | X | | | |
| Navarea Warnings | X | | | |
| Information on Ports and Harbours | X | | | Via NAVAREA XII Coordinator |

GMDSS IMPLEMENTATION (IMO 970 – GMDSS Handbook)

| SERVICE | YES | NO | PARTIAL | NOTES |
|-------------|-----|----|---------|-------|
| Master plan | | X | | |
| A1 Area | | | X | |
| A2 Area | | | X | |
| A3 Area | | X | | |
| NAVTEX | | X | | |
| SafetyNET | | X | | |

6. C-55. Last update in web IHO, June 8/2009.

The data will be updated

6.1 HYDROGRAPHICS SURVEYS

1.1 Status of hydrographic survey of all navigable waters, including internal waters, out to the limits of the EEZ:

Survey coverage, where:

A = percentage which is adequately surveyed.

B = percentage which requires re-survey at larger scale or to modern standards.

C = percentage which has never been systematically surveyed

| | A | B | C |
|---------------|----|---|----|
| Depths < 200m | 88 | 0 | 12 |
| Depths > 200m | 22 | 0 | 78 |

Amplifying information: The concept of EEZ is not applicable

6.2 NAUTICAL CHARTING

If do you have a nautical charting capability, complete the details below

2.1 Status of nautical charting within the limits of the EEZ

Coverage of charts published by your organization, where:

A = percentage covered by INT series, or a paper chart series meeting the standards M-4.

B = percentage covered by Raster Navigational Charts (RNCs) meeting the standards in S-61.

C = percentage covered by ENC's meeting the standards in S-57.

| Purpose/Scale | A | B | C |
|---|------|---|------|
| Offshore passage/Small | 100 | 0 | 100 |
| Landfall and Coastal passage/Medium | 73.3 | 0 | 85.7 |
| Approaches and Ports/Large | 88.2 | 0 | 35.1 |
| Percentage of Group A showing depths in | 100 | 0 | 100 |

| | | | |
|---|-----|---|-----|
| meters | | | |
| Percentage of Group A referenced to a satellite datum | 100 | 0 | 100 |

7. CAPACITY BUILDING

7.1 Training received:

- 01 Electronic Charting Training UKHO UK
- 01 MSDI IHO-CBC Brazil

7.2 Training needed:

- Submarine Topography Training
- NAVTEX training
- Development of Printing by demand
- Development of Hydrographic Data Base

7.3 Training and courses offered:

- Escuela Naval de Suboficiales. ARC Barranquilla. Hydrographic and Oceanography technology. www.escuelanavalsuboficiales.edu.co

7.4 Projects under development:

- Cartographic and hydrographic project 2012
- Cartographic and hydrographic project 2013 apply to DIMAR
- Information management model for strengthening the National Hydrographic Service 2013-2014 (phase 1 of 2) apply to DIMAR.

8. OCEANOGRAPHIC ACTIVITIES

- Measurement of oceanographic parameters and marine meteorology
- Numerical modeling of oceanographic processes: of wave and presentation of virtual buoys; assessor in B and R operations; forecast pursuit spots hydrocarbons
- Oceanographic and marine meteorology forecast
- Studies and assessor in oceanographic subjects and coastal erosion
- Land reception satellites station GOES
- Directional wave buoys

9. OTHER ACTIVITIES

- Determination of DIMAR jurisdiction in the Colombian Caribbean
- Geomorphology and sedimentology of coasts

- Studies of circulation of currents and sediments
- Studies of winds and tides.
- IBCSEP Chairman
- IBCCA Chairman
- Member of GEBCO
- Celebration of World Hydrographic Day 2012. Cooperation between MS

10. THINGS THAT KEEP US AWAKE AT NIGHT

- ~~How to solve the overlapping between cells CO-VE~~ Solved
- Implement the Base data base project
- Increase the surveys in depth water
- Edit the IBCCA sheets 1-10, 1-12 and 1-16

11. CONCLUSIONS

Is necessary to continue the increase of the cooperation between members states for the development of the MACHC region.

The contribution of hydrographic for the development

~~Captain Juan Carlos Acosta Chady~~
 Director Centro de Investigaciones Oceanográficas e Hidrográficas CIOH



C008/2700



C008/2701