

A topographic map of the Caribbean region, showing the Gulf of Mexico to the north, the North Atlantic Ocean to the northeast, and the North Pacific Ocean to the southwest. The map includes labels for the United States, The Bahamas, Cuba, Mexico, Central America (Guatemala, El Salvador, Honduras, Nicaragua, Costa Rica, Panama), and South America (Venezuela, Colombia, Guiana, Suriname, French Guiana, Brazil). The Caribbean Sea is labeled in the center. Overlaid on the map is the text 'BRAZILIAN NATIONAL REPORT' in large, bold, red, italicized letters, and '13th. MACHC 2012' in smaller, bold, red, italicized letters below it. A scale bar and projection information are visible in the bottom left corner.

***BRAZILIAN NATIONAL  
REPORT***

***13th. MACHC 2012***

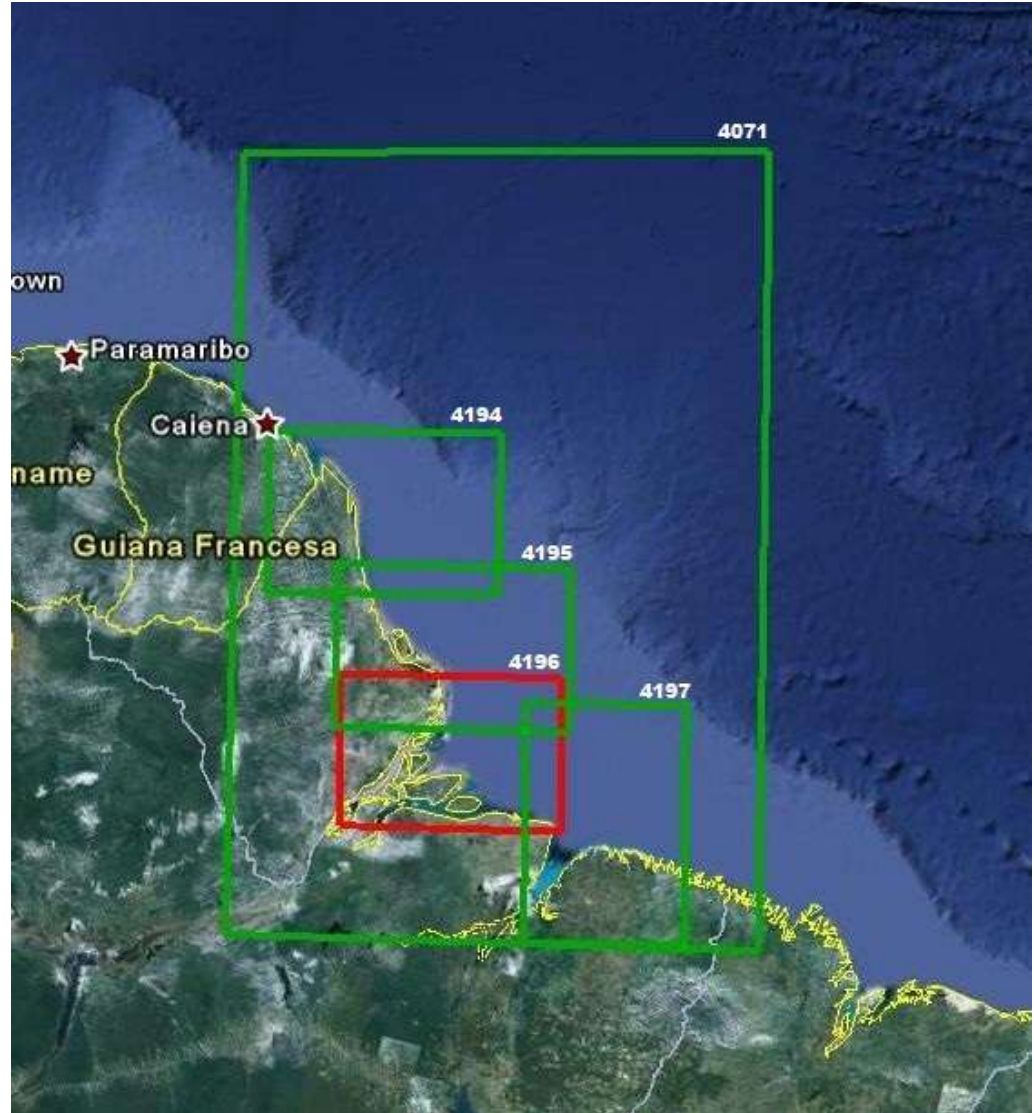
# BRAZILIAN NATIONAL REPORT

- Catalogue of Brazilian INT nautical charts (MACHC):

<b>INT</b>	<b>National</b>	<b>TITLE</b>	<b>Scale 1 :</b>	<b>1st Ed</b>	<b>To be edited</b>
4071	21010	De Cayenne ao Cabo Guripi	1 000 000	2010	
4194	21100	Do Cabo Orange à Ponta Tucumã	300 000	2010	
4195	21200	Da Ponta Tucumã à Ponta Guará	300 000	2011	
4196	21300	Do Cabo Norte ao Cabo Maguari	300 000		2012
4197	21400	Do Cabo Maguari à Ponta Boiuçucanga	300 000	2012	

# BRAZILIAN NATIONAL REPORT

INT chart  
scheme as by  
NOV2012:



# BRAZILIAN NATIONAL REPORT

- Catalogue of Brazilian ENC cells\* (MACHC):

Cell Nr	TITLE	Scale 1 :	1st Ed	To be edited
BR221010	De Cayenne ao Cabo Guripi	700 000	2011	
BR221020	De Salinópolis à Fortaleza	700 000	2010	
BR321100	Do Cabo Orange à Ponta Tucumã	180 000	2010	
BR321200	Da Ponta Tucumã à Ponta Guará	180 000	2011	
BR321300	Do Cabo Norte ao Cabo Maguari	180 000		2012
BR321400	Do Cabo Maguari à Ponta Boiuçucanga	180 000		2012
BR321500	Da Ponta Boiuçucanga a Ponta do Zumbi	180 000	2012	

\* - Distributed by IC-ENC.

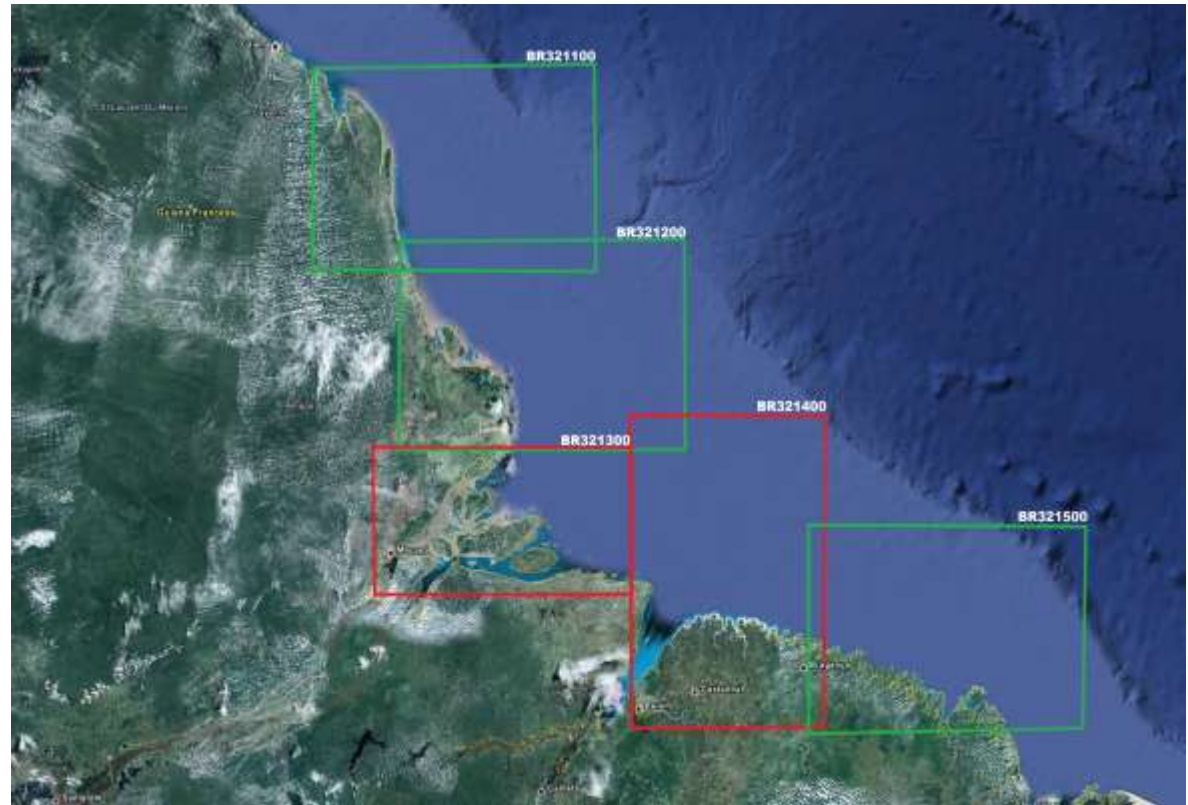
# BRAZILIAN NATIONAL REPORT

ENC UB2 chart  
scheme as by  
NOV2012:



# BRAZILIAN NATIONAL REPORT

ENC UB3 chart  
scheme as by  
NOV2012:



# BRAZILIAN NATIONAL REPORT

Status of nautical charting within the limits of the EEZ:

Coverage of charts published by your organisation, where:

A - Percentage covered by INT series, or a paper chart series meeting the standards in M-4.

B - Percentage covered by Raster Navigational Charts (RNCs) meeting the standards in S-61.

C - Percentage covered by ENC's meeting the standards in S-57.

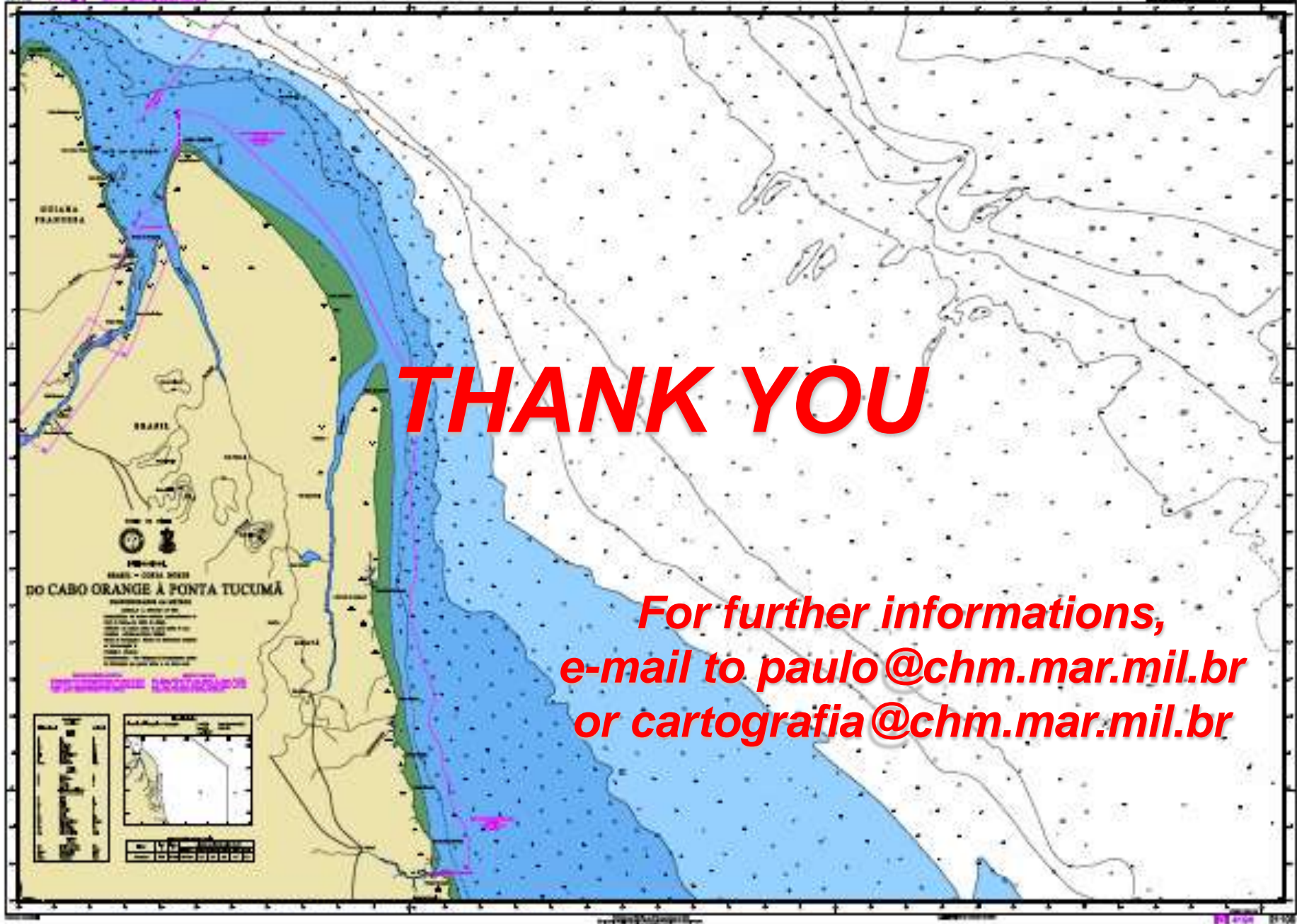
Purpose/Scale	A		B		C
	INT	National Series	INT	National Series	
Offshore passage/Small	100		100		100
Landfall and Coastal passage/Medium	75		75		50
Approaches and Ports/Large		100		96	100

# BRAZILIAN NATIONAL REPORT

- The Nautical Cartographic Plan of Amazon Basin is being conducted by the Brazilian Navy Hydrographic Ships, so as to update in a systematic way the mapping of the region. New ships + new equipments to meet the requirements.







**THANK YOU**

**For further informations,  
e-mail to paulo@chm.mar.mil.br  
or cartografia@chm.mar.mil.br**