



Login

Username

Password

Login

[Forgot your password?](#)

Data can be stored safely behind an authentication protocol

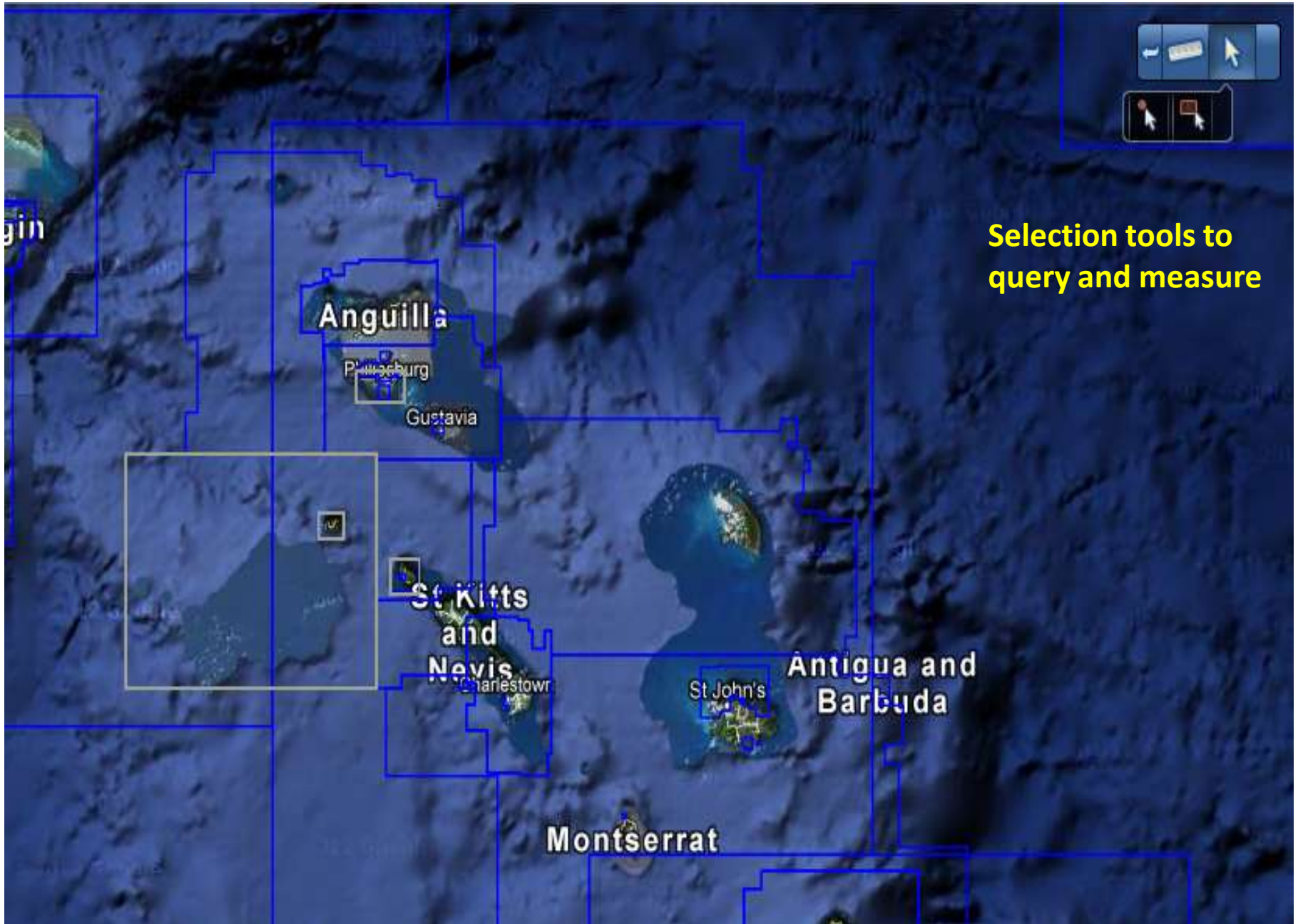


International Hydrographic Organization MesoAmerican-Caribbean Sea Hydrographic Commission

Imprima | Enlace | Información de la carta



Data can be organized by themes and layers that can be activated or deactivated as desired



Selection tools to query and measure



Batimetria

X	Y	Depth
-63.50108	17.40787	-24.715
-63.50108	17.40805	-24.707
-63.50108	17.40823	-24.707
-63.50108	17.40841	-24.708
-63.50108	17.40697	-24.650
-63.50108	17.40859	-24.708
-63.50108	17.40715	-24.650
-63.50108	17.40877	-24.711

Bathymetry query



International Hydrographic Organization MesoAmerican-Caribbean Sea Hydrographic Commission

Imprima | Enlace | Información de la carta



CATZOC_C

CELLNAME	CATZOC
GB48004A	4
GB48004A	4
GB380040	4
GB380040	4

Users can query defined attributes

Temas

ENC Charts ▾

- NatureOfTheSeaBed
- TracksRoutes
- OffshoreInstallations
- GeographicArea
- RocksWrecksObstructions
- NavigationAids
- Depths

Query of an ENC cell and its metadata

```

OBJECTID    4511403
CELLNAME    FR274750
USAGEBA     2
SCALE       700000
SOURCE      VAR2
STATUS      RELEASED
T01UNIT
ISSUEDAT
ISSUENUM
SHAPE_AREA  6.98598557276e+001
SHAPE_LEN   3.46997002868e+001
fid         Global_ENC_Coverage.4143
key         Global_ENC_Coverage
  
```

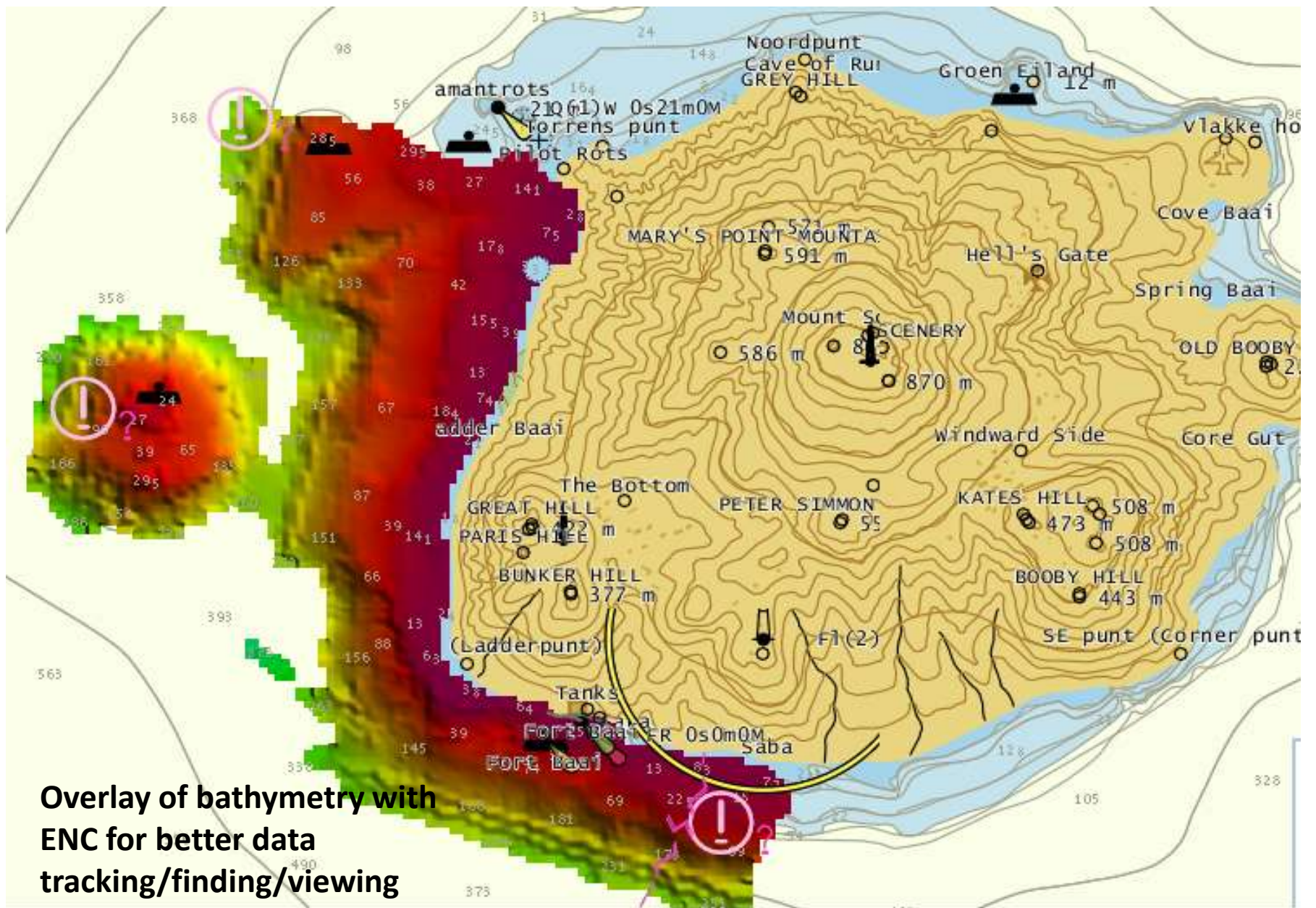
229850.32555, 1779173.31722



Imagery ©2012, Map data ©2012 - Terms of Use

Global_ENC_Coverage

OBJECTID	CELLNAME	USAGEBA	SCALE	SOURCE	STATUS	T01UNIT	ISSUEDAT	ISSUENUM	SHAPE_AREA	SHAPE_LEN
4511403	FR274750	2	700000	VAR2	RELEASED				6.98598557276e+001	3.46997002868e+001
4511760	GB104402	1	1500000	VAR2	RELEASED				3.03441581444e+002	8.62094592027e+001
4511425	FR353010	3	301202	VAR2	RELEASED				5.12303723905e+000	1.02735000143e+001
4511557	FR474710	4	45000	VAR2	RELEASED				2.05518063444e-001	2.04713694223e+000



**Overlay of bathymetry with
ENC for better data
tracking/finding/viewing**



International Hydrographic Organization MesoAmerican-Caribbean Sea Hydrographic Commission

[Imprima](#) | [Enlace](#) | [Información de la carta](#)

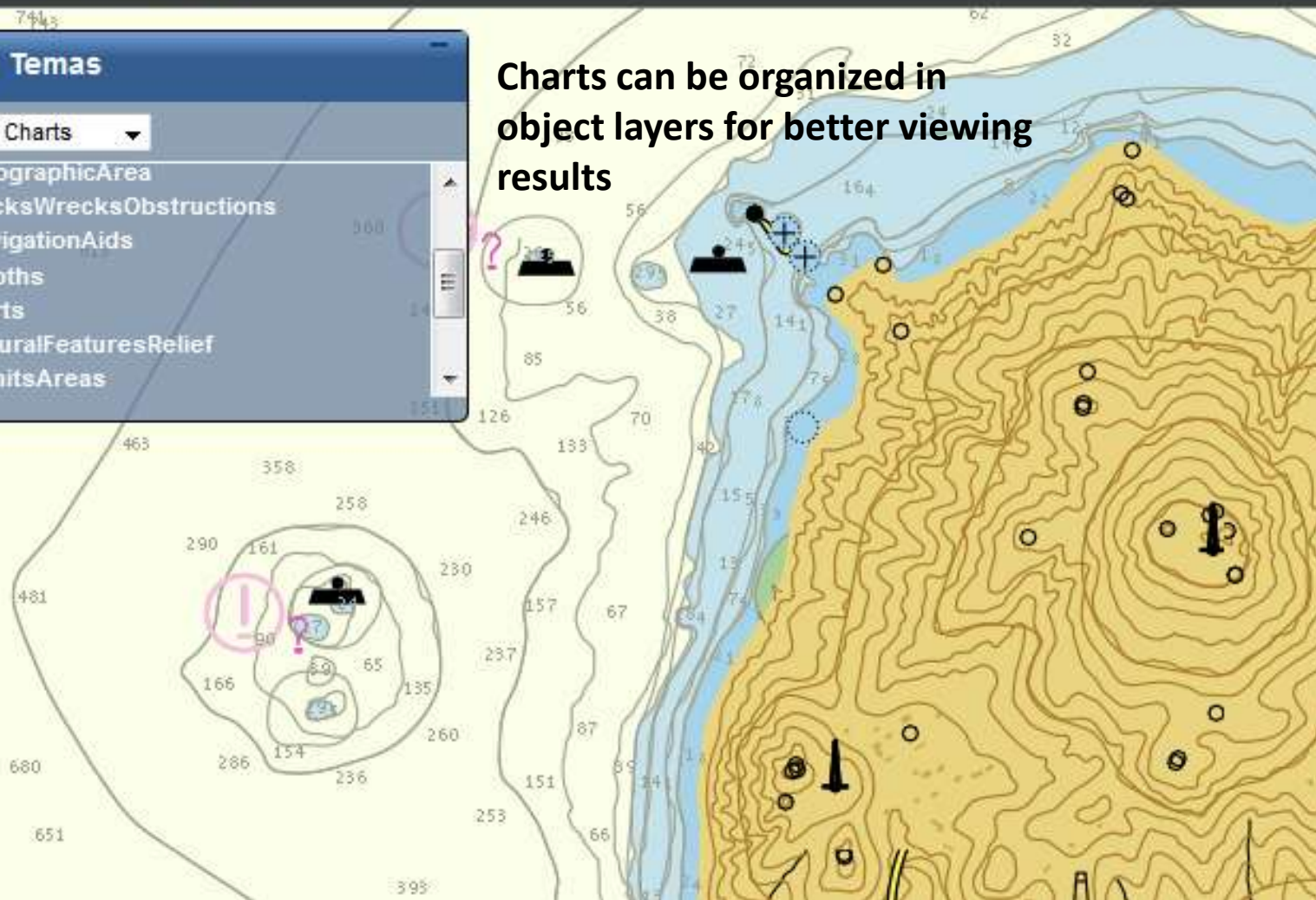


Temas

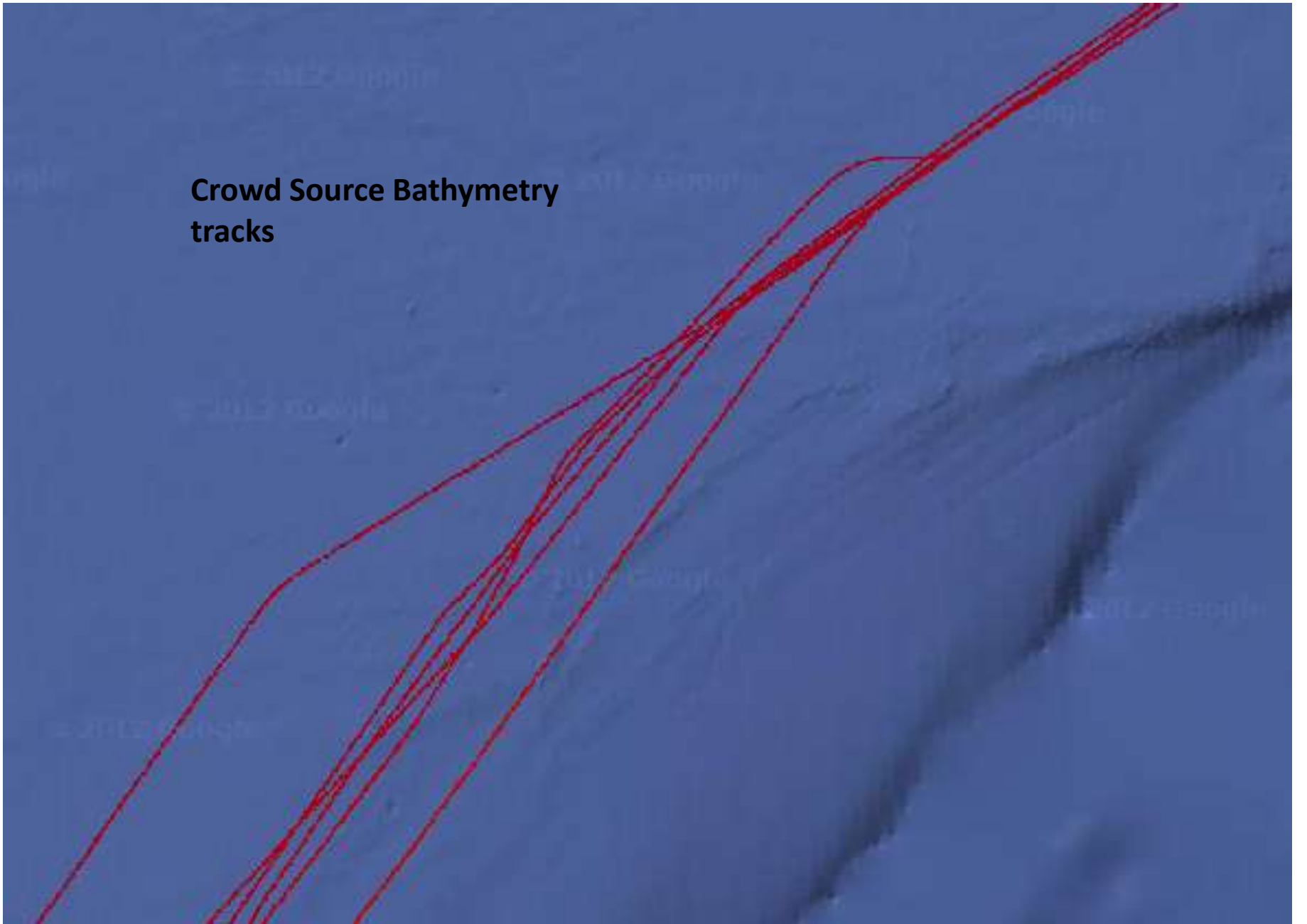
ENC Charts ▾

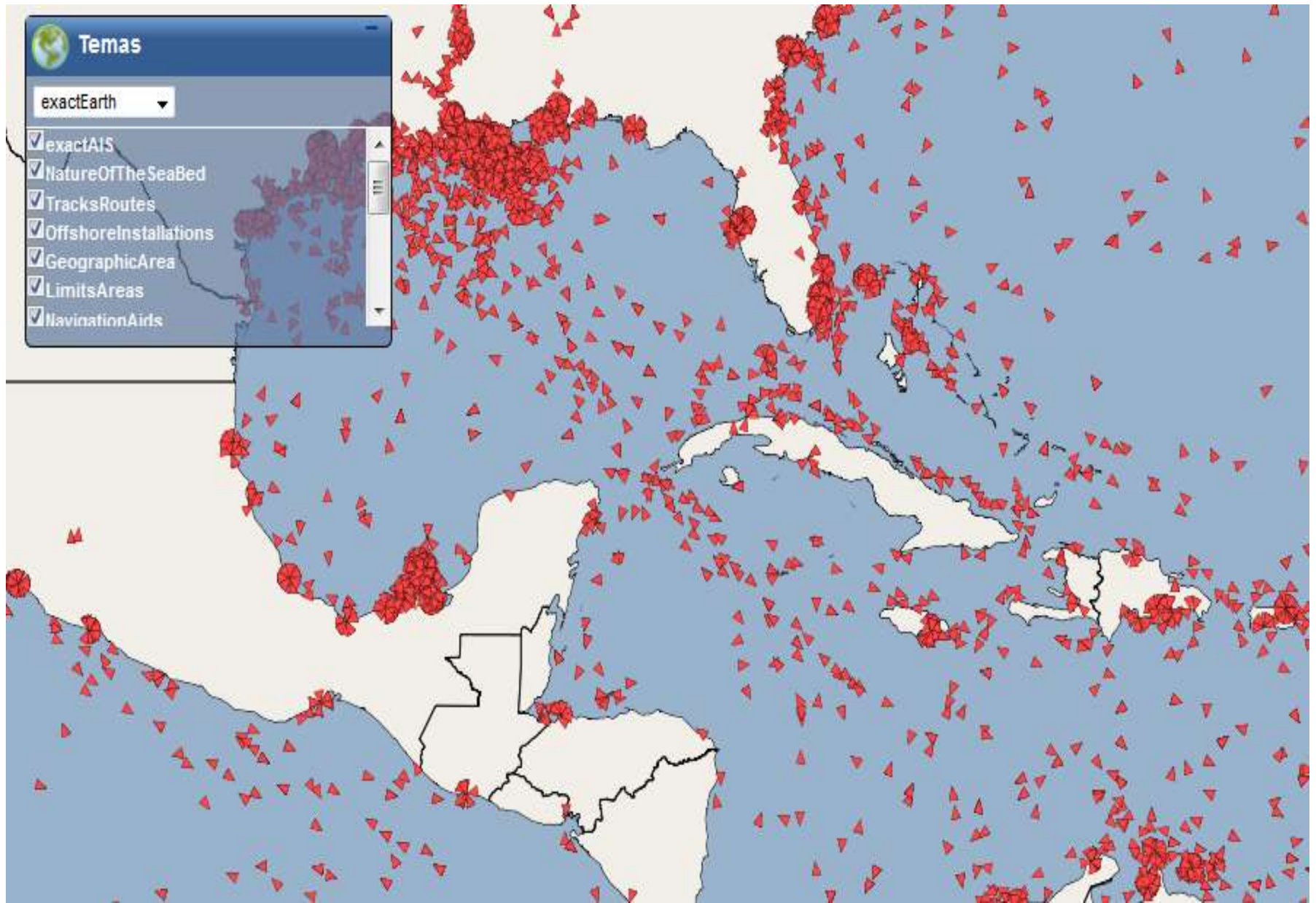
- GeographicArea
- RocksWrecksObstructions
- NavigationAids
- Depths
- Ports
- NaturalFeaturesRelief
- LimitsAreas

Charts can be organized in object layers for better viewing results



**Crowd Source Bathymetry
tracks**





AIS data display