

DANISH MINISTRY OF THE ENVIRONMENT  
National Survey and Cadastre  
MAPS, GEODATA AND SPATIAL INFRASTRUCTURE

## THE NORTH SEA HYDROGRAPHIC COMMISSION 29th Conference

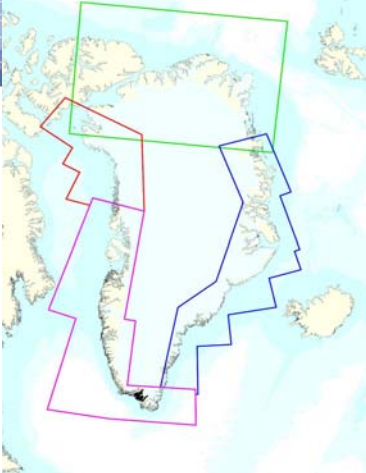
Information about chart production for Greenland and Faroe Islands

DANISH MINISTRY OF THE ENVIRONMENT  
National Survey and Cadastre  
MAPS, GEODATA AND SPATIAL INFRASTRUCTURE

### Chart Production New charts for Greenland

**Greenlandic Charts:**  
94 papercharts  
266 ENC-celler

- **Westcoast:**  
55 papercharts, 74 harbourcharts and approx. 208 ENC-cells
- **Eastcoast:**  
15 papercharts og 19 harbourcharts and approx. 48 ENC-cells
- **NorthWestcoast:**  
6 paperchart og 9 ENC-cell
- **Northcoast:**  
1 paperchart and 1 ENC-cell

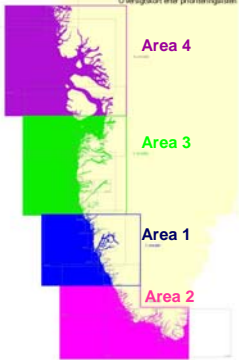


DANISH MINISTRY OF THE ENVIRONMENT  
National Survey and Cadastre  
MAPS, GEODATA AND SPATIAL INFRASTRUCTURE

### Work agreement between the Ministry of Environment and the Self-Government of Greenland

Purpose: Rectification of 65 charts  
From 2009 to 2018

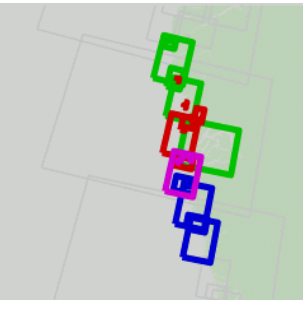
Overgikort efter prioriteringsorden

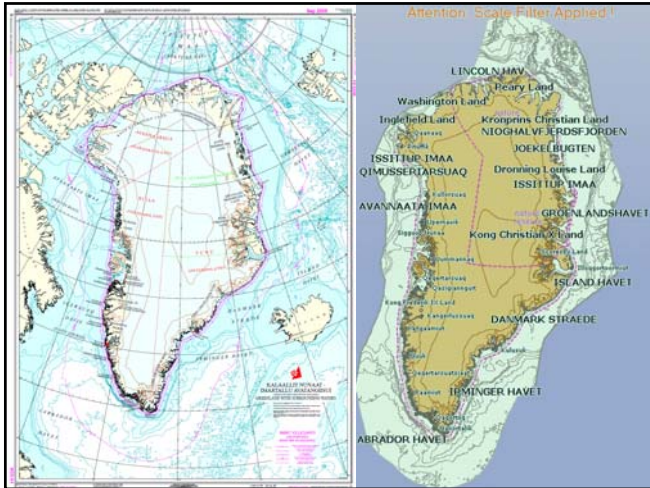


DANISH MINISTRY OF THE ENVIRONMENT  
National Survey and Cadastre  
MAPS, GEODATA AND SPATIAL INFRASTRUCTURE

### Charts:

- 2012 (6 “new” charts)
- 2011 (4 “new” charts)
- 2010 (4 “new” charts)
- 2009 (4 “new” charts)
- 2008 (2 “new” charts)





DANISH MINISTRY OF THE ENVIRONMENT  
National Survey and Cadastre

MAPS, GEODATA AND SPATIAL INFRASTRUCTURE

- Coastline
- Rocks
- Depth contours
- Soundings
- Place name in new Greenlandic spelling
- Buoy, Beacons
- New surveys
- Contours, spot heights
- Limits
- Technical maps
- Rivers & lakes

**Production of a new charts**

Data verification  
Data merging

The new chart

DANISH MINISTRY OF THE ENVIRONMENT  
National Survey and Cadastre

20/21

MAPS, GEODATA AND SPATIAL INFRASTRUCTURE

**Future work**

- Optimizing the work flow for 65 charts – South West of Greenland
- Define a method for the rest of Greenland (app. 25 chart but 75 % of the coast line)

DANISH MINISTRY OF THE ENVIRONMENT  
National Survey and Cadastre

INTERNATIONAL MARITIME ORGANIZATION  
IMO

NAV 55/DP 6  
23 May 2009  
ENGLISH ONLY

SUB-COMMITTEE ON SAFETY OF NAVIGATION  
35th session  
Agenda item 20

ANY OTHER BUSINESS

Precaution in using navigational charts in Greenland waters  
Submitted by Denmark

**Information regarding precaution in use of navigational charts in Greenland waters:**

Information material at IMO NAV55 meeting in 2009 was produced by SFS (Danish Maritime Authority) and KMS.

**SUMMARY**

Executive summary: This document provides information regarding precaution in use of navigational charts in Greenland waters in terms of accuracy in light charts due to incorrect processing of the coastline, geographical data and hydrographic survey. Further, this document address of precaution regarding the use of electronic navigation in Greenland coastal waters.

Strongly directed: 3/2  
High level action: 2/2,4  
Planned output: -  
Action to be taken: Paragraph 15  
Related documents: MSC 86/1, SN 1/Cas 276, SN 1/Cas 233, SN/Cas 233, SN 1/Cas 207/Rev 1 and MSC/Cas 1036

**Introduction**

1. At its eighty-sixth session, the Maritime Safety Committee is expected to adopt a carriage requirement for an Electronic Chart Display and Information System (ECDIS) for SOLAS vessels with an implementation period from 2012 to 2013. In this context, Denmark has found it essential to provide guidance on navigation in Greenland waters in the light of the still limited coverage of Electronic Navigational Charts (ENC) in these waters in 2012 and above.

2. Greenland covers a large Arctic area (2.127.600 km<sup>2</sup>) and is navigationally considered a remote area. The distance between the settlements in Greenland are large, and the consequences of an accident may be grave in Greenland compared to more densely navigated waters, where search and rescue facilities are within the easy. In addition to this, an accident could have a serious impact on the vulnerable Arctic environment.

The review of content will involve a panel of 3000 profiles. Selection on basis of their being the right to be included in an electronic chart.

IMO NAV 55/DP 6 doc

DANISH MINISTRY OF THE ENVIRONMENT  
National Survey and Cadastre  
MAPS, GEODATA AND SPATIAL INFRASTRUCTURE

**Caution to be taken before navigating in Greenland coastal waters**

23 In summary, at present caution must be taken in consideration that:

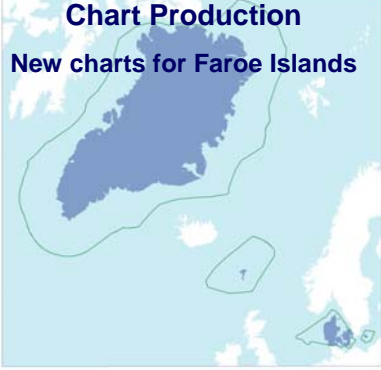
- official ENCs are not available for coastal navigation;
- only paper charts are available for coastal navigation, but these are not compatible with GNSS navigation;
- paper charts have incorrect positioning of coastlines in the geographic net;
- chart datum "Qomooq 1927" is used for some areas, mostly at west Greenland, instead of WGS 84 datum;
- for other areas, mostly north and east Greenland, the source material for chart datum may be unknown and the accuracy may be affected by the age and quality; and
- hydrographic surveys may be sporadic and areas may be considered as unexplored. In some areas, depths are only given by sounding tracks from passages of a reconnaissance nature.

**Planned Safety of Navigation (SN) circular**

34 Denmark will, before the implementation date of the new carriage requirement for ECDIS, forward a Safety of Navigation circular to the Organization providing the latest information on chart availability and quality for Greenland waters.

DANISH MINISTRY OF THE ENVIRONMENT  
National Survey and Cadastre  
MAPS, GEODATA AND SPATIAL INFRASTRUCTURE

**Chart Production**  
**New charts for Faroe Islands**

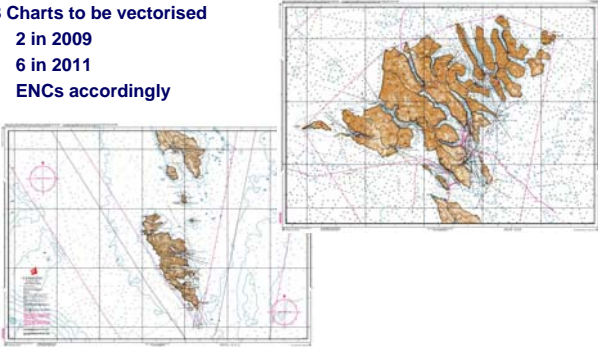


DANISH MINISTRY OF THE ENVIRONMENT  
National Survey and Cadastre  
MAPS, GEODATA AND SPATIAL INFRASTRUCTURE

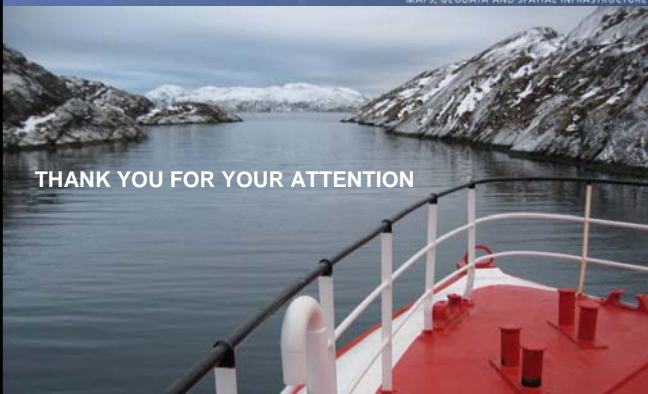
**Plans regarding Faroe Islands**

**8 Charts to be vectorised**

- 2 in 2009
- 6 in 2011
- ENCs accordingly



DANISH MINISTRY OF THE ENVIRONMENT  
National Survey and Cadastre  
MAPS, GEODATA AND SPATIAL INFRASTRUCTURE



**THANK YOU FOR YOUR ATTENTION**