

NSICCWG Report 2018

Author WG Coordinator: Andrew Hinton

Presented by: Michael Davis



NSICCWG Report

- **Description of new ToR / RoP for NSICCWG - submitted for approval**
- **Update on revised management of INT charts in NSICCWG**
- **Update on INT Charting changes since NSHC 32**



NSICCWG Report

- New ToR are given in Annex A to Report
Relevant NSEHWG ToRs incorporated.
Alignment with S-11 Part A - Annex 1.
ToRs for INT Area F ICCWG also referred to.
New ToRs sent to Member States and amendments included.
NSHC now has to agree these ToR.
- Rules of Procedure also updated
To reflect how business is conducted in NSICCWG
email and general consensus.



NSICCWG Report

TERMS OF REFERENCE: FORMER NSEHWG.

The WG should:

- Analyse ENC's within the Commission region to identify any existing consistency issues due to differences in interpretation of ENC encoding guidance and ENC product specification.
- Propose solutions and measures to avoid inconsistencies, improve ENC encoding and where possible propose changes to improve display.
- Actively gather and analyse feedback from mariners on the use of ENC's in ECDIS in NW European waters to identify any issues related to ENC display.
- Exchange views on and propose solutions and measures that can be implemented by NSHC members that would improve the consistency and display of ENC's.
- Report to IHO HSSC WGs and / or propose amendments to the IHO and RENC recommendations to gain wider acceptance of proposals amongst ENC producers where this is appropriate.

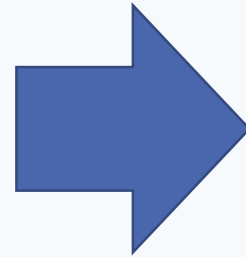


NSICCWG Report

S11 Part A Annex 1 Ed 3.1.0

2.6 To coordinate the development and maintenance of ENC schemes, by regional agreement, to ensure consistent parameters are used in the compilation of ENC.

Former NSEHWG ToRs
Consistency and overlaps



NEW NSICCWG ToR

2.6 To coordinate the development and maintenance of **small and medium scale ENC schemes** and, if required, resolve any outstanding ENC consistency or coverage issues with or between **members**, by regional agreement, to ensure consistent parameters are used in the compilation and scheming of ENCs.



NSICCWG Report

Revised management review and monitoring of INT charts (S-11 Part A)

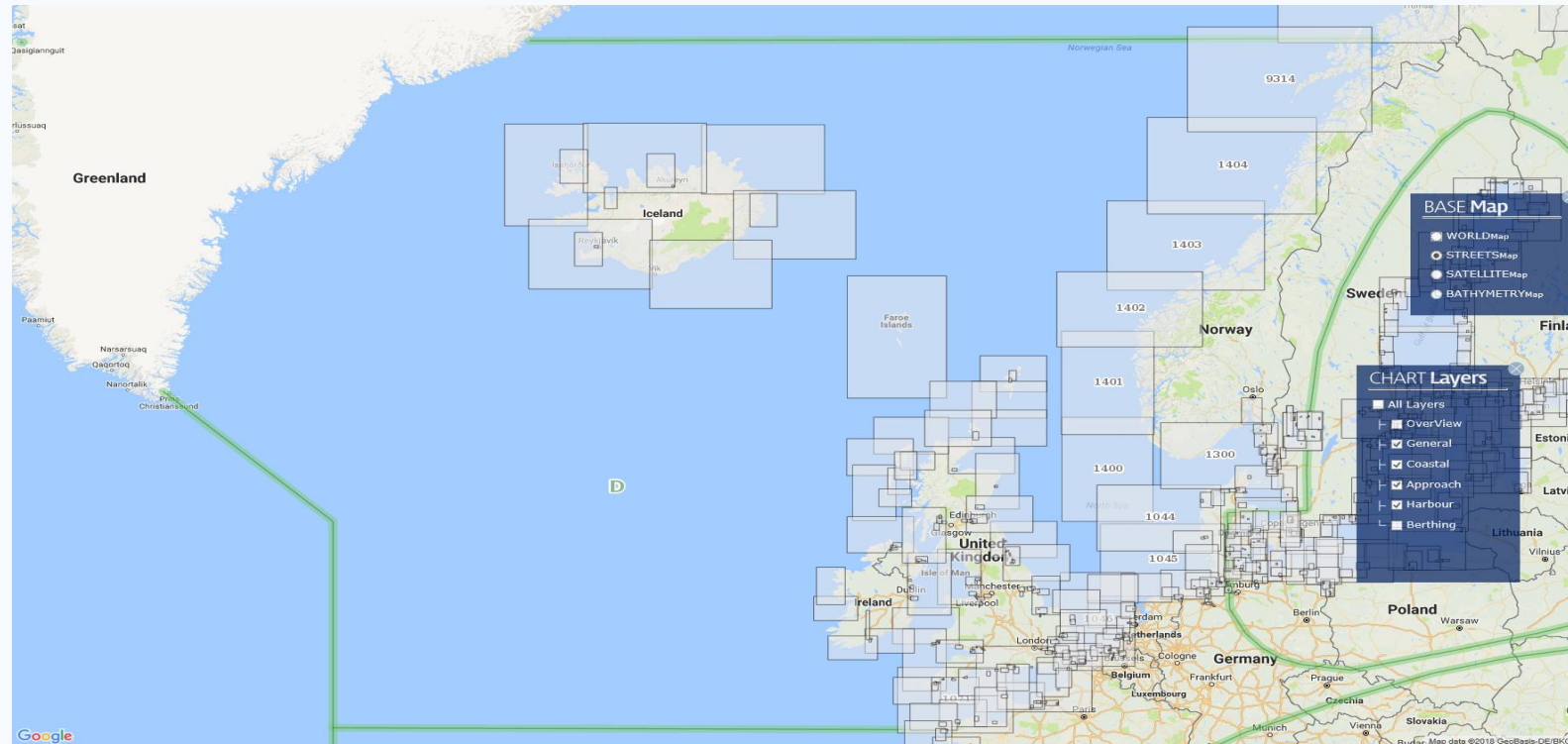
Reminder of main elements :

- All new INT Charts submitted to Regional INT Chart Coordinator (ICCWG) for review.
- Coordinator to verify chart's compliance with IHO standards and to provide feedback to the Producer Nation.
- Implementation of new INT Chart web catalogue (INToGIS). Member states update their own INT chart changes.

- All now implemented in NSICCWG.
- New INT chart procedures not fully tested yet. – so few new INT charts.
- INToGIS system is working well. Virtually all member states are now complying.
- Member states are reminded to keep system updated.
- Agreed with IHO that all INToGIS changes will go live after NSHC33 to allow member states to update.



NSICCWG Report



INT Charts in region - 288

Overview 18, General 13, Coastal 60, Approach 49, Harbour 112, Berthing 36

Mature and stable scheme, however some significant changes since NSHC 32 in 2016. Details are given below.



NSICCWG Report

GERMANY.

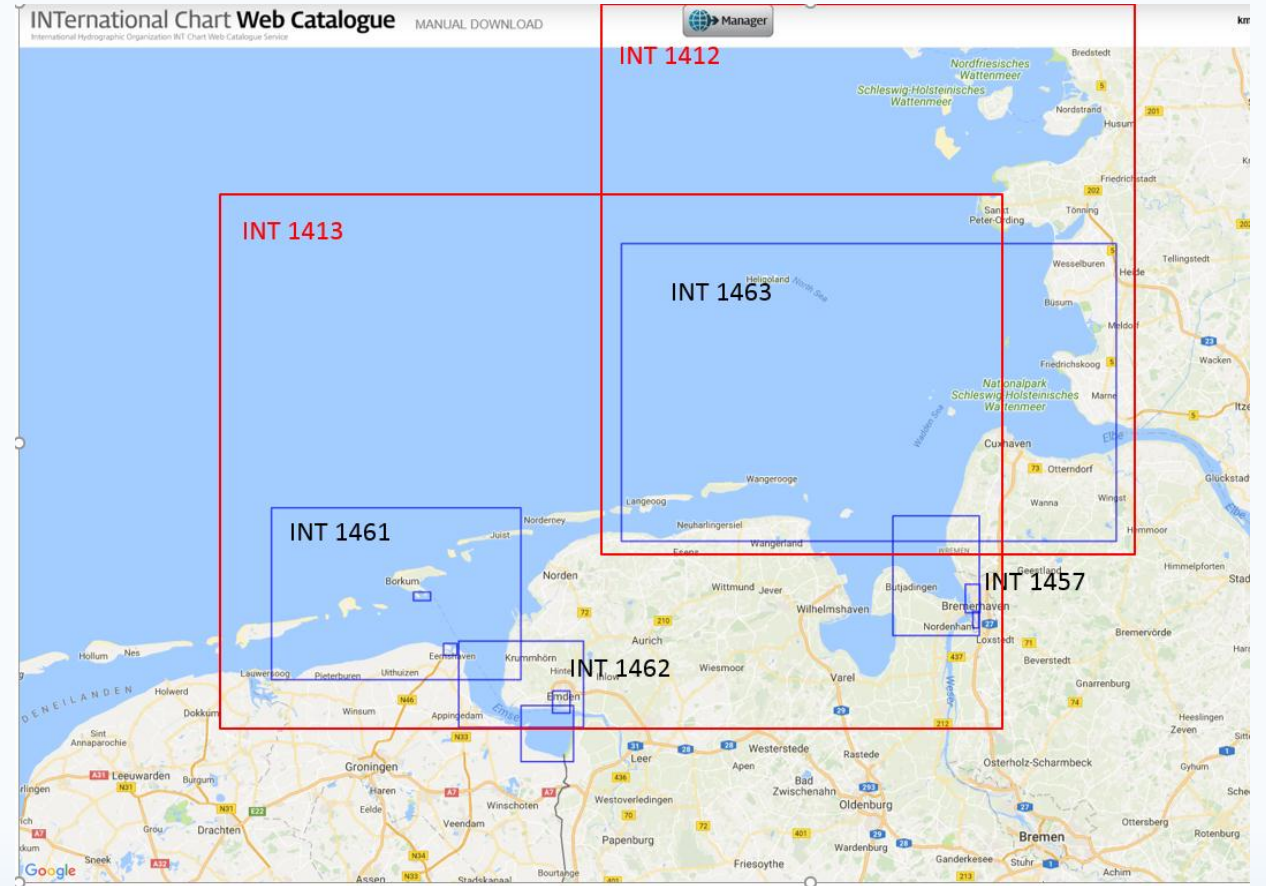
Various changes - mouths of the Rivers Elbe, Ems and Weser.

INT charts - 1457, 1461 and 1462.

All extended to A0 size and transferred onto a common scale of 1:30,000.

Several plans removed from INT chart coverage and transferred to national coverage.

INT 1463 withdrawn replaced by INT1412 and 1413 at 1:150,000.



NSICCWG Report

NETHERLANDS

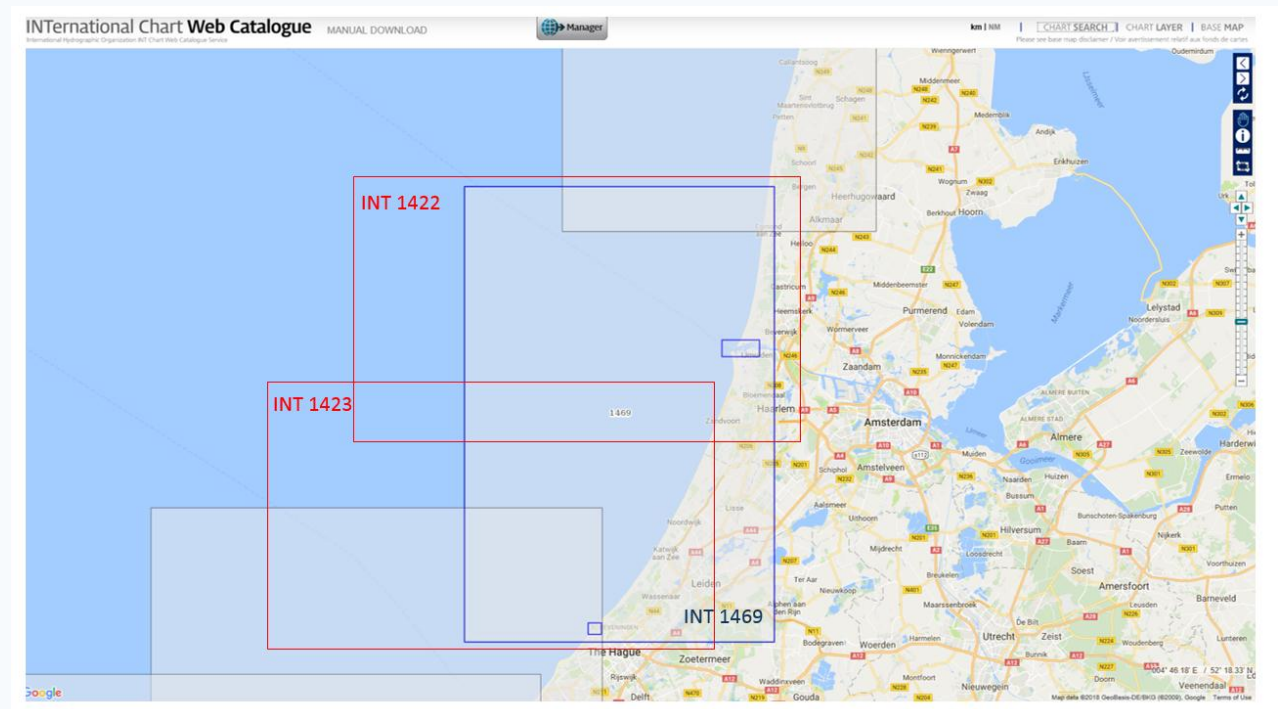
Changes in Approaches to IJmuiden.

INT chart 1469 replaced by two new INT charts

Landscape, same scale.

The new INT numbers will be INT1422 and 1423.

Not yet published.



NSICCWG Report

UK implementing new generalisation policy –
NSHC 32 presentation

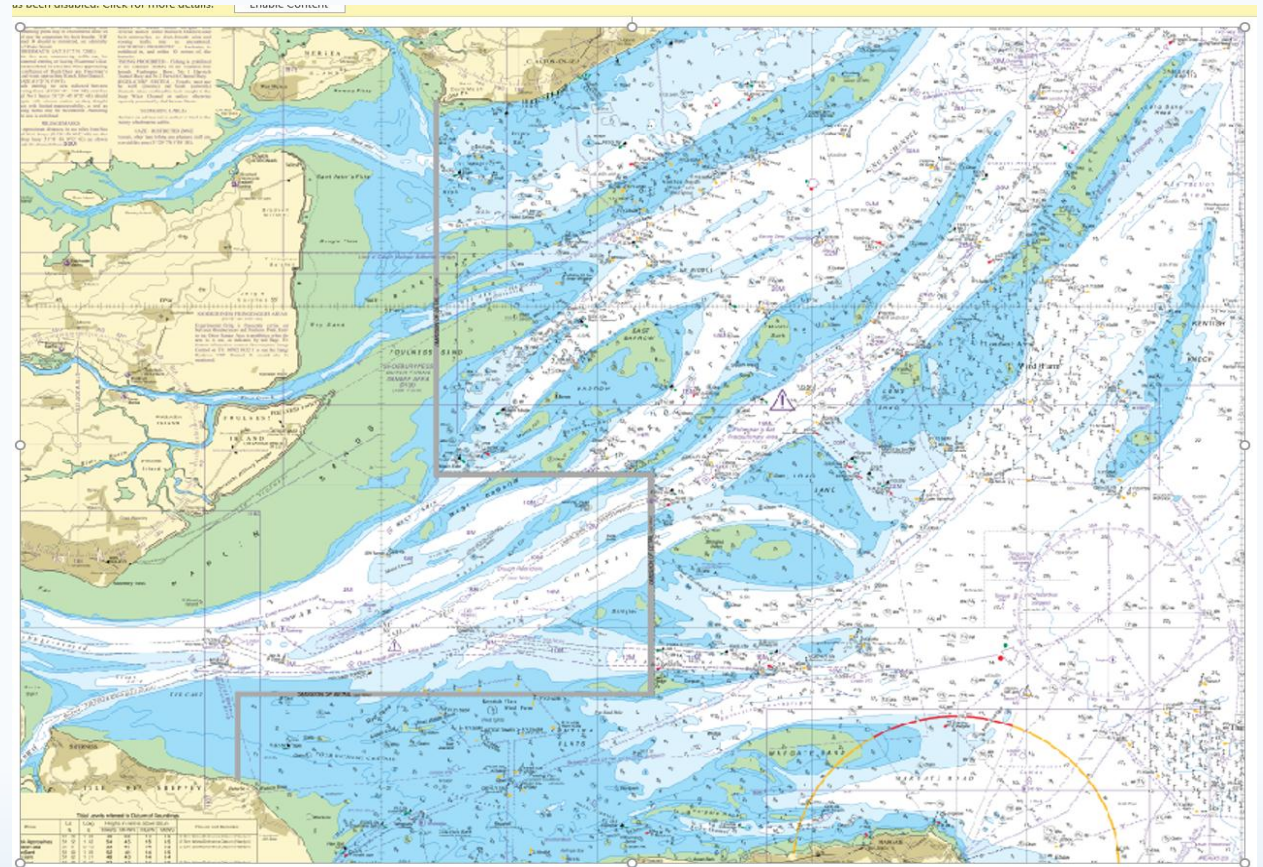
Small scale charts in UK waters only.

Omission of Detail line - approx where third
scale.

Features heavily filtered out behind line.

INT 1561 across shows how it looks.

Maintenance reduced by 50% since
incorporation.



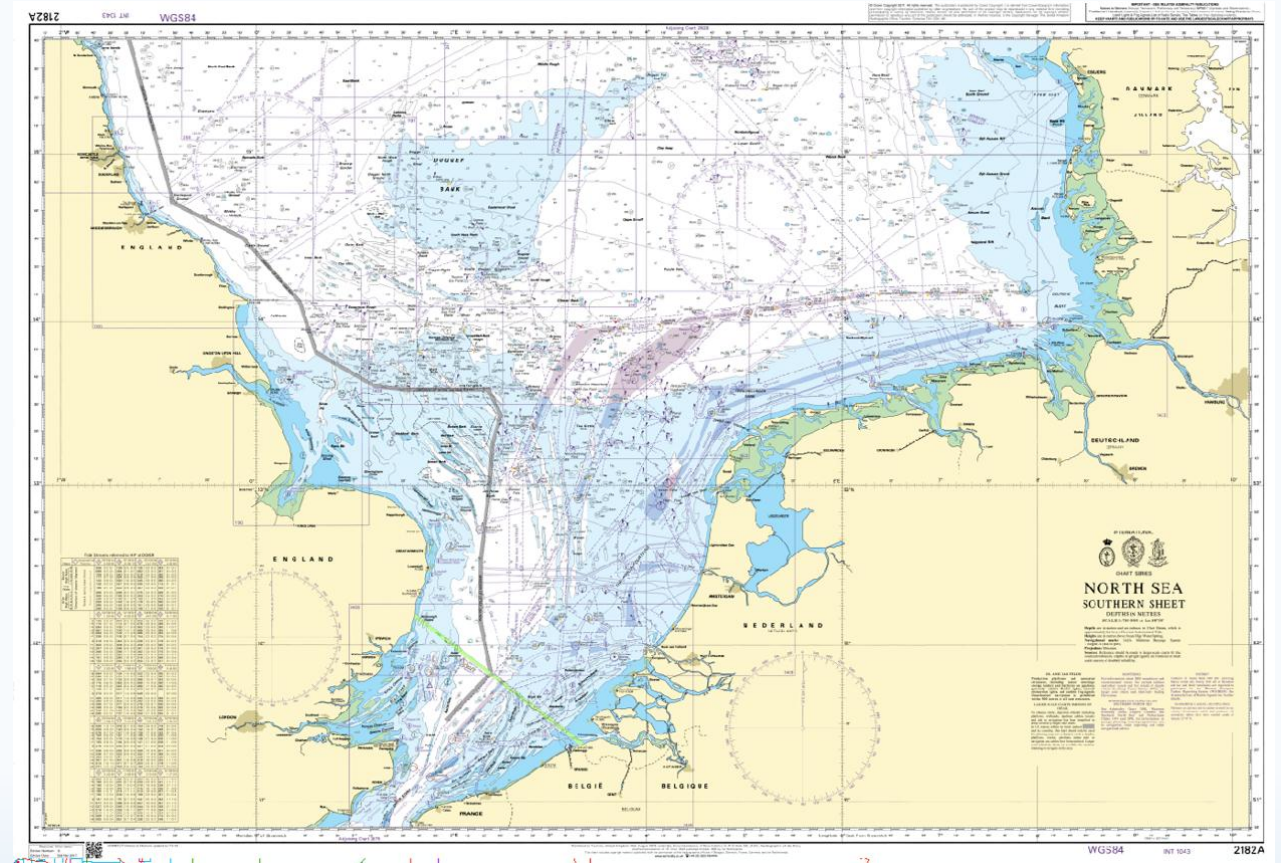
NSICCWG Report

INT 1043 – Inserted OOD line in UK waters after agreement from NL.

Benefits:

- Reduced maintenance.
- Encourages users onto more appropriate charts.
- Clears up ambiguity on where generalised.
- Improves clarity and understanding.

Other members adopting variations on the same policy.



NSICCWG Report

The NSHC is invited to:

- a. **Approve** the draft Terms of Reference and Rules of Procedure for the North Sea International Charting Coordination Working Group shown at Annex A.
- b. **Note** the status of the INT Chart schemes via IHO INTToGIS and ENC Chart Catalogue links, and urge members to ensure the web catalogue is updated so that it remains authoritative.

