

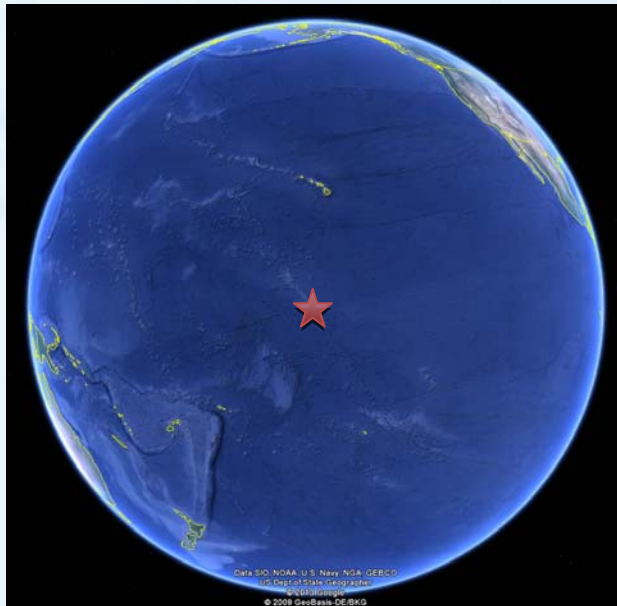


Toward a Framework for Action on Hydrographic Services - A Regional Approach for the Pacific

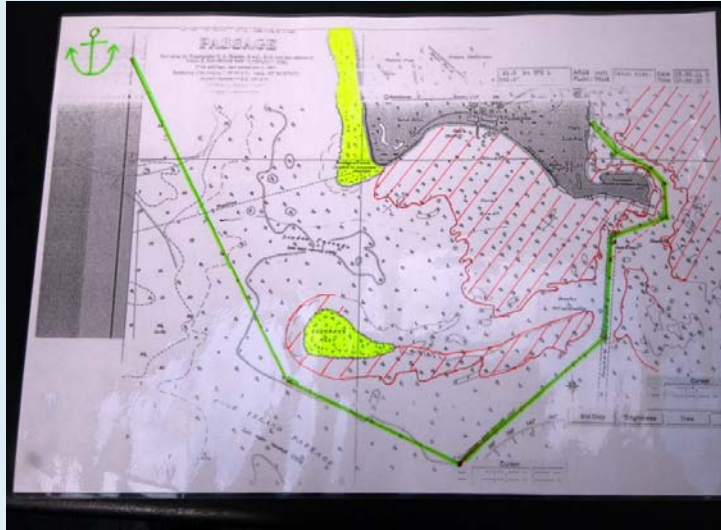
Jens Kruger, Team Leader - Oceanography
jensk@spc.int

The Southwest Pacific Hydrographic Commission
Port Vila, November 2013

Kiritimati Atoll, Line Islands, Kiribati



Port of Ronton (London) Channel



Successful landing of tourists at Ronton

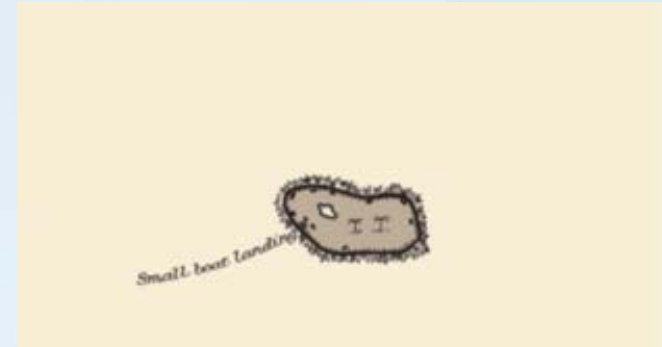


Outline

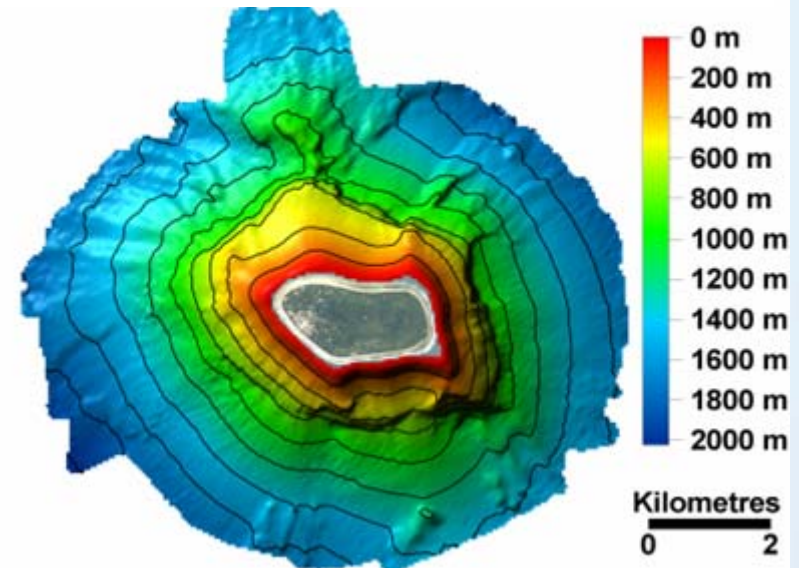


- What is SPC?
- Regional Maritime Transport Meeting 2014
- Data Discovery & Distribution
- Survey workplan
- Proposal for a Framework for Action

Niutao Island, Tuvalu, 1952 marine chart (based on 19th century data)



SPC/SOPAC 2004 Multibeam Survey and satellite imagery





Secretariat of the Pacific Community a Regional International Intergovernmental Organisation



SPC Member Countries:
American Samoa, Cook Islands, Federated States of Micronesia, Fiji, French Polynesia, Guam, Kiribati, Marshall Islands, Nauru, New Caledonia, Niue, Northern Mariana Islands, Palau, Papua New Guinea, Pitcairn Islands, Samoa, Solomon Islands, Tokelau, Tonga, Tuvalu, Vanuatu, and Wallis and Futuna

plus Australia, France, New Zealand and the United States of America

The Secretariat of the Pacific Community



SPC was founded in Australia in 1947, and has celebrated 65 years of service to Pacific Island Countries and Territories

SPC is owned and governed by the Pacific's 26 member countries and territories, and is the region's principal technical and scientific organisation.

SPC is mandated to enhance sustainable development in the Pacific

SPC-SOPAC: Applied Geoscience and Technology Division (Ocean & Islands Program)

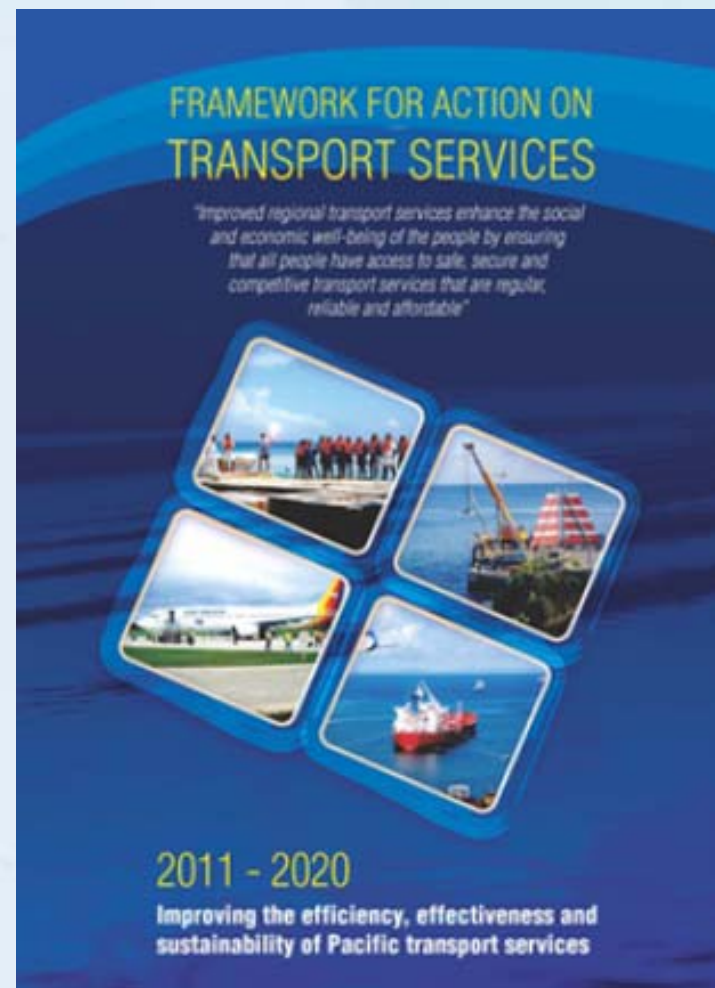
SPC-EDD: Economic Development Division (Transport Program)



Regional Transport Meeting



- Heads of Maritime Transport Meeting, 4 to 6 March 2014
- Regional Transport Official's meeting, 31 March to 1 April 2014
- Regional Transport Minister's meeting 2 to 3 April 2014
- Prepare a Transport Services Implementation Plan (TSIP)
- Regional Associations:
 - Pacific Islands Maritime Association (PacMA)
 - Pacific Maritime Transport Alliance (PMTA)
 - Endorsement of a single Association as a regional voice
- **Hydrography is not on the agenda**
- SPC to prepare an information paper to raise awareness of, and propose a regional approach to, hydrography (15 December deadline)





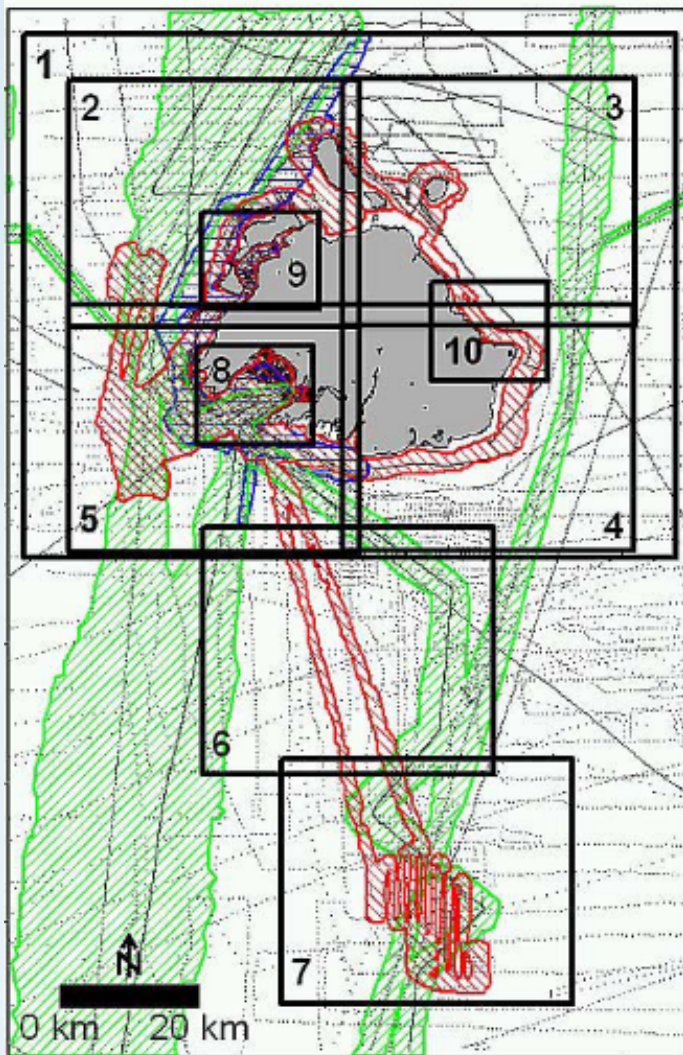
A Business Case for Hydrography

- Cost benefit framework
- Case study approach:
 - Cost savings / Effectiveness
 - Potential benefits
- Quantitative assessments:
 - Specific country cases
 - Show type and magnitude of economic value
 - Serve as illustration of the broader impact for whole Pacific
- Qualitative assessments where useful

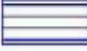
"The prosperity of an island nation depends greatly on the extent to which it achieves **excellence in hydrography**"


Rod Nairn, 2010


Data Discovery, Efate example

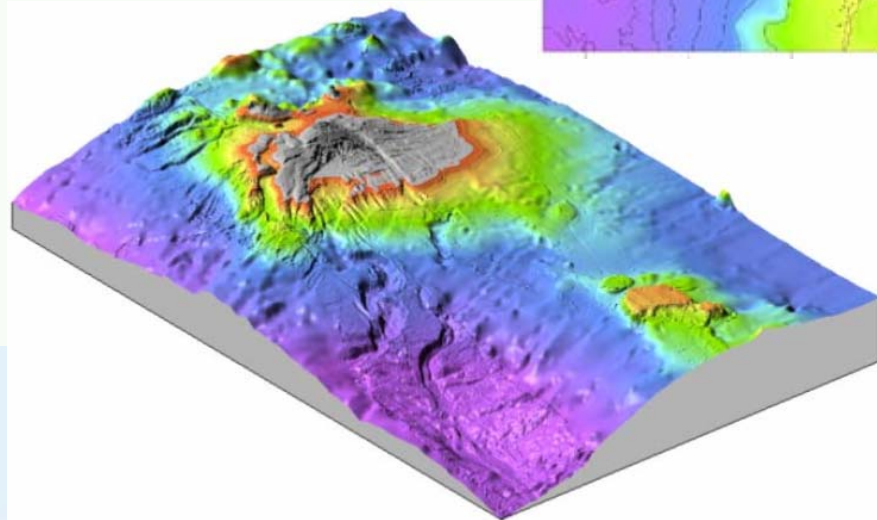
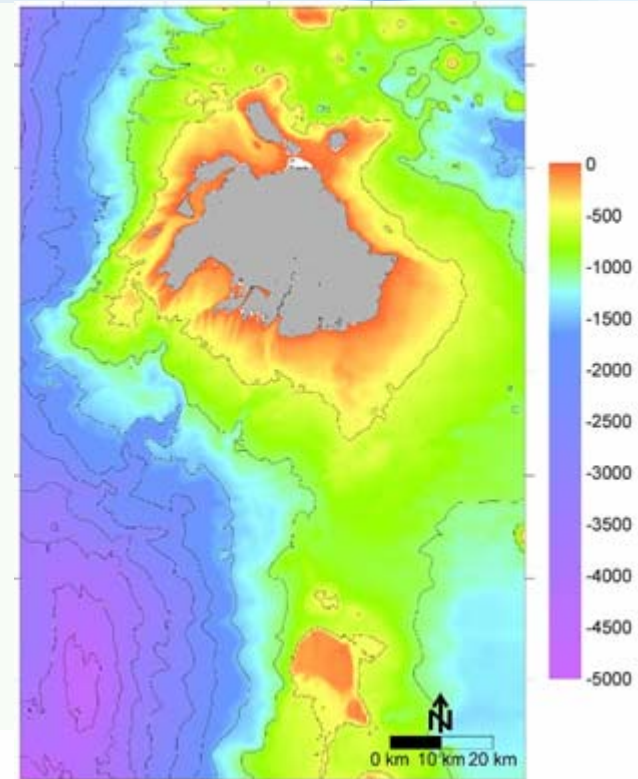


 Multibeam echosounder surveys by IRD Nouméa on RV Jean Charcot and L' Atalante.

 Multibeam echosounder survey by IRD Nouméa on RV Alis.

 Multibeam echosounder surveys by SOPAC.

 Singlebeam echosounder data, compiled by B. Pelletier, IRD Nouméa.






Data Discovery - Geonetwork Server

- Geospatial Data is held at SPC on behalf of member countries
- Metadata, maps and grids can be accessed through the SPC/SOPAC GeoNetwork server

Current data holdings comprise 237 sets of bathymetric data

**SPC**
SECRETARIAT OF THE PACIFIC COMMUNITY
Applied Geoscience and Technology Division (SOPAC)

GEONETWORK
Ocean and Islands Programme



Home | Contact us | Links | About | Help |

Username Password Login

FIND INTERACTIVE MAPS, GIS DATASETS, SATELLITE IMAGERY AND RELATED APPLICATIONS

What?

Where?




Open Map Viewer

- Any -

Search

Reset Advanced Options

Aggregate Results matching search criteria : 1-10/306 (page 1/31), Sort by Relevance

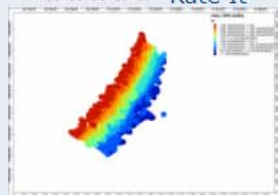
☐ **NIUE, 1994, SHALLOW WATER BATHYMETRY DATA**


Abstract

This metadata entry holds a gridded bathymetry data Niue, 1994. Original dataset are stored in Universal Traverse Mercator (UTM) WGS84 which are referenced to MapInfo standard projection. Da...

Keywords bathymetry, shallow water bathymetry,, Niue

☐ Metadata

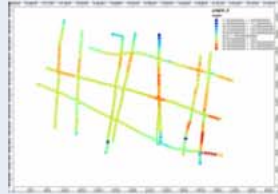

Rate It

☐ **PAPUA NEW GUINEA, PORT MORESBY, 1992, SHALLOW WATER BATHYMETRY DATASET**

Abstract

Record holds the gridded bathymetry dataset in ASCII tab delimited format of Port Moresby in Papua New Guinea. Survey was conducted using a high-resolution swath mapping multibeam echosounde...

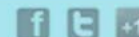
Keywords Multibeam bathymetry, Sediment Sampling ,Analysis and composition,Modelling bathymetric change, Fiji Islands


Rate It

CATEGORIES

- Data Type - Aerial Photographs
- Data Type - Aggregates
- Data Type - Bathymetry
- Data Type - Deep Sea

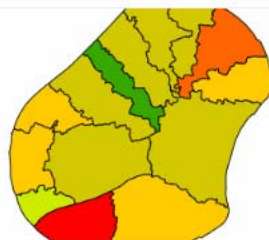
Data Discovery – Online Portal

[Sign in](#) | [?](#)[HOME](#)[LAYERS](#)[MAPS](#)[DOCUMENTS](#)[PEOPLE](#)[SEARCH](#)

Applied GeoScience and Technology Division, Secretariat of the Pacific Community



PacGeo

[About](#)[Explore Layers](#)[Explore Maps](#)

[n2test](#)

Map from [admin](#), 2 weeks, 4 days ago

22

views



Average rating (0 votes)

[Download](#)[View](#)

PacGeo started life as the Pacific Island Marine Spatial Information System, but since inception has broadened its scope to be an all encompassing geospatial platform to catalogue, administer and expose geophysical, geodetic and specialist marine spatial data. The system was developed as a regional service in conjunction with Geoscience Australia (GA), SOPAC Division, the UNEP Shelf Programme, the University of Sydney and the Commonwealth Secretariat for provisioning easy access to jurisdictional information as well as other geophysical data in the Pacific.



Show:

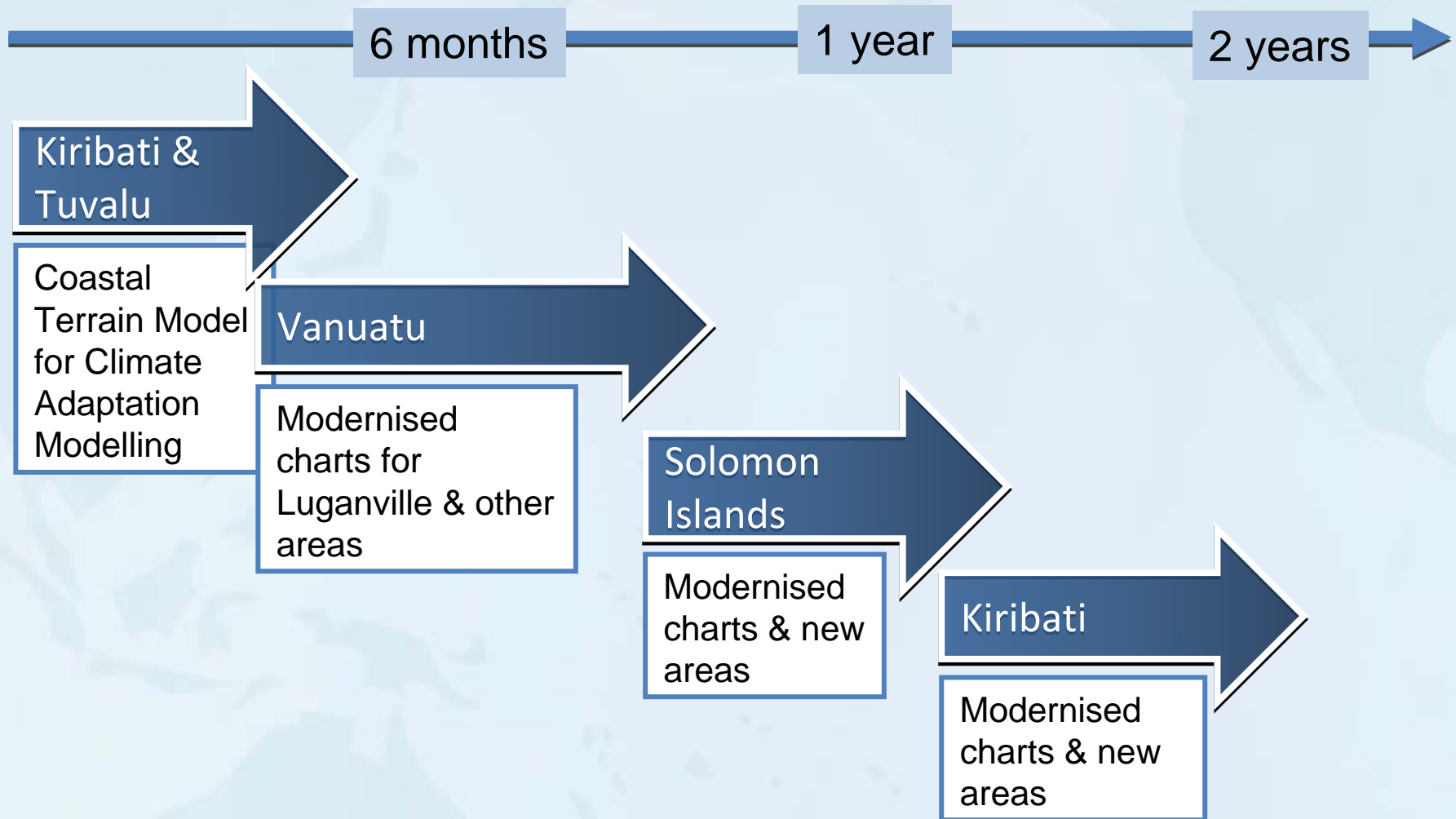
[Latest Data](#)[Featured Data](#)

[Log in to contribute.](#)



- Recommendation from SOPAC Divisional meeting (Oct 2011): recommendation was passed by SPC CRGA to: *“acknowledge the (SOPAC) division is committed to making its data and products as open and freely available as possible, in line with international best practice for dissemination of public domain data”*
- SOPAC Divisional meeting (Nov 2012) also reaffirmed: *“the increasing demand from PICTs for access to scientific data and information, including the division products; and acknowledged **the SOPAC Division is committed to making its data and products as open and freely available as possible, in line with international best practice for dissemination of public domain data**”*
- The new SPC-SOPAC Data Portal will be used as an opportunity to implement these recommendations and provide improved access to bathymetric / hydrographic data.

Hydrographic Survey Schedule



Current Funding Sources for Hydrographic Activities at SPC



New Zealand

Regional Ocean Sciences Programme

- 2012: NZD 0.7M
- 2013: NZD 1.0M

Australia

Capacity Building in Hydrography for
Ocean and Coastal Development

- 2013 to 2015: AUD 0.3M

Other Development Partners

.....



Proposed Guiding Principles of a Regional Framework for Action on Hydrography



1. The need for sustainable livelihoods, and recognition of climate change/disasters, culture, equity and gender issues
2. National-led solutions supported by regional initiatives compliant with international obligations
3. Evidence-based planning – the importance of prioritising through risk assessments
4. Coordinated whole-of-sector approach: the importance of treating hydrography as an integrated service
6. Appropriate investment in human capital and technical solutions
7. ‘Many partners, one team’ / ‘Map once, use many ways’

Call to Action – What is Needed?



1. Acknowledge the support by Australia and New Zealand to SPC
2. Note and support SPC's efforts to establish a Hydrographic Unit
3. Support SPC on activities relating to the Transport Minister's meeting in March / April 2014
4. Provide support in drafting a Framework for Action and Regional Solution for Hydrography in the Pacific
5. Consider SPC's Associate membership to the SWPHC