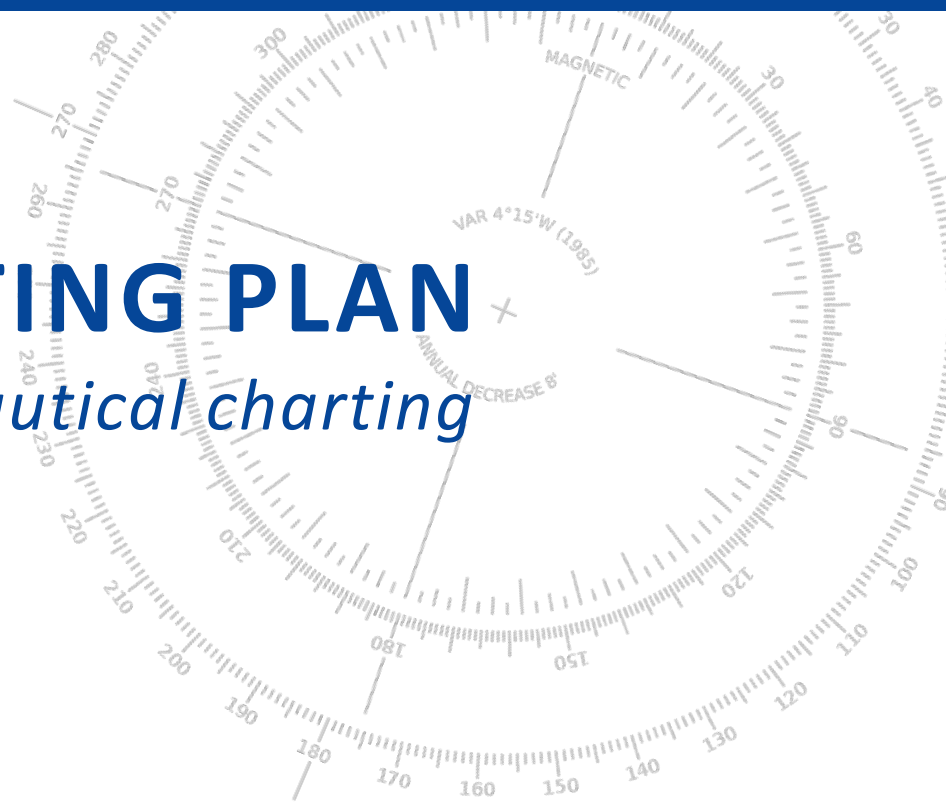


NATIONAL CHARTING PLAN

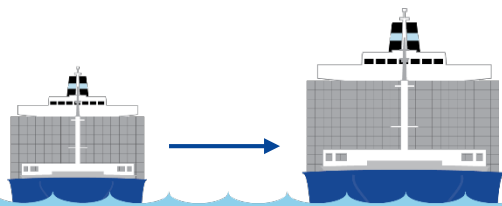
A strategy to transform nautical charting



Office of Coast Survey
National Oceanic and Atmospheric Administration

A Changing World

Ships are growing, requirements are changing, technology is advancing



Container ship size has increased four-fold in 30 years.



Use of electronic charts and ECDIS will soon be mandatory for all large commercial vessels.

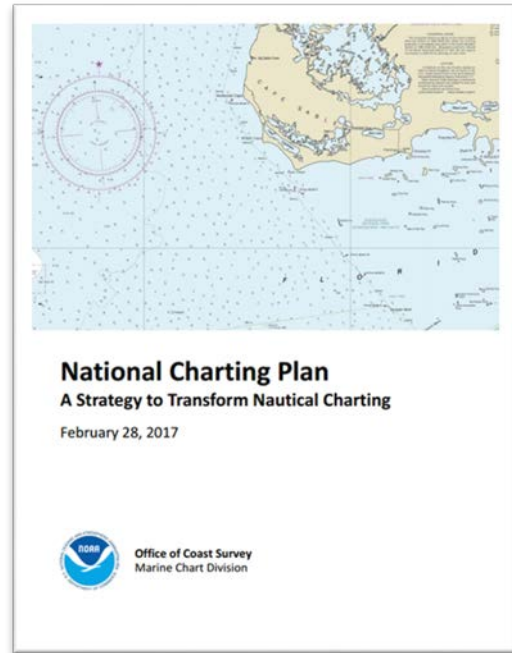


Electronic chart display use is rising among recreational boaters.



Office of Coast Survey
National Oceanic and Atmospheric Administration

National Charting Plan



Purpose

Improve NOAA nautical chart coverage, products, and distribution

Provide feedback by June 1, 2017

www.nauticalcharts.noaa.gov/staff/news/2017/nationalchartingplan.html



Office of Coast Survey
National Oceanic and Atmospheric Administration

Transforming nautical charting

Actions that will improve charting and marine navigation:

Improving Chart Updates

Improving Chart Content

Improving Chart Schemes

Improving Chart Production Efficiency

MSDI and Open Data



Office of Coast Survey
National Oceanic and Atmospheric Administration

Improving Chart Updates



Improve chart update information


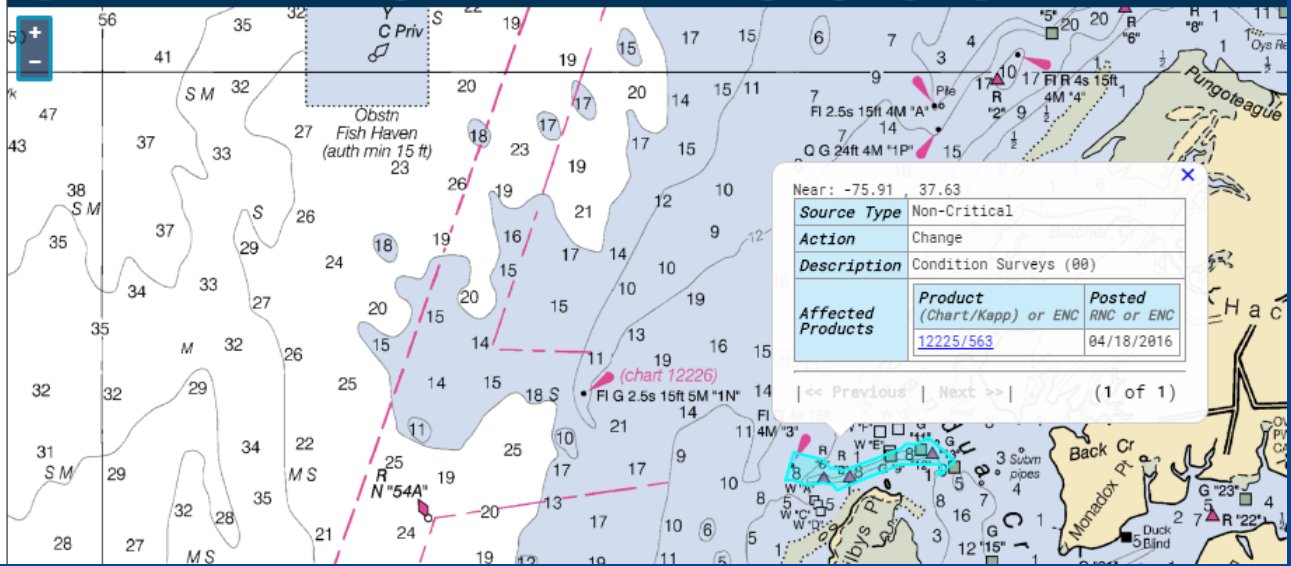
 **Charting Products - Weekly Updates**
from Critical & Non-Critical Sources

Chart: 12225 Week Ending: 04/21/2016

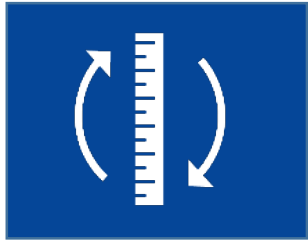


Near:	-75.91	37.63
Source Type	Non-Critical	
Action	Change	
Description	Condition Surveys (00)	
Affected Products	Product (Chart/Kapp) or ENC	Posted RNC or ENC
	12225/563	04/18/2016

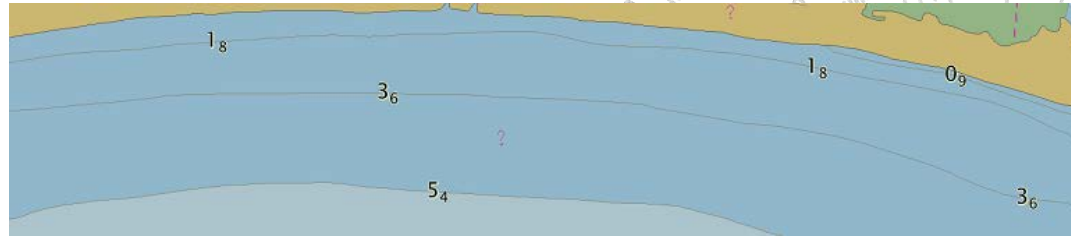
<< Previous | Next >> (1 of 1)



Improving Chart Content



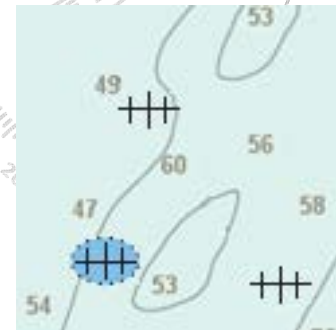
Convert to metric



Reduce unwarranted alarms & isolated danger symbolization



ECDIS display of wrecks with an "isolated danger" symbol



"Normal" ECDIS display of the same two "non-dangerous" and one "dangerous" wrecks

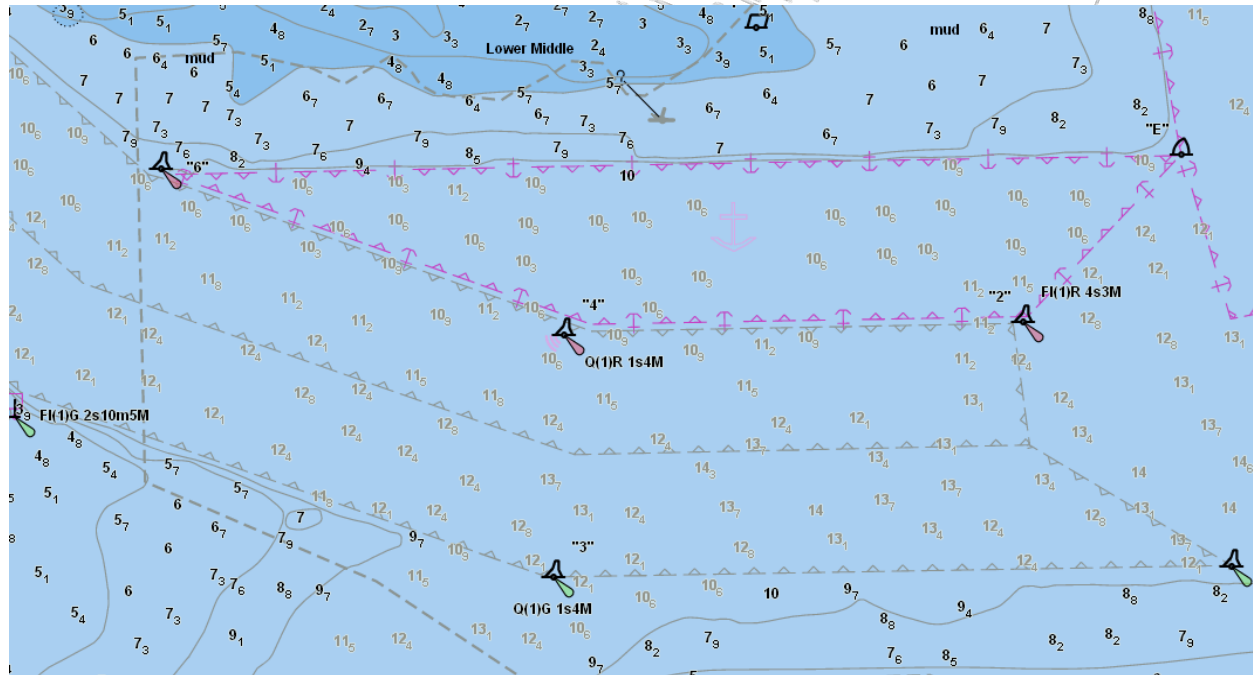


Improving Chart Content



Provide timelier data

Standardization of USACE data formats



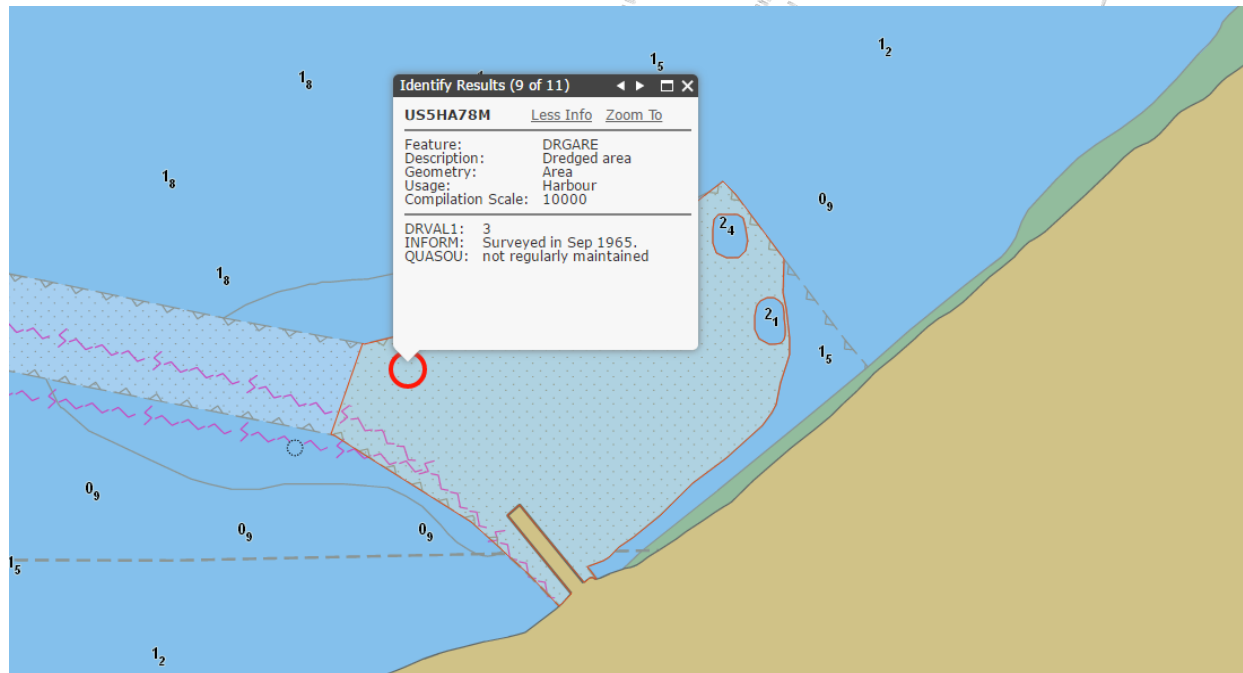
Office of Coast Survey
National Oceanic and Atmospheric Administration

Improving Chart Content



Provide timelier data

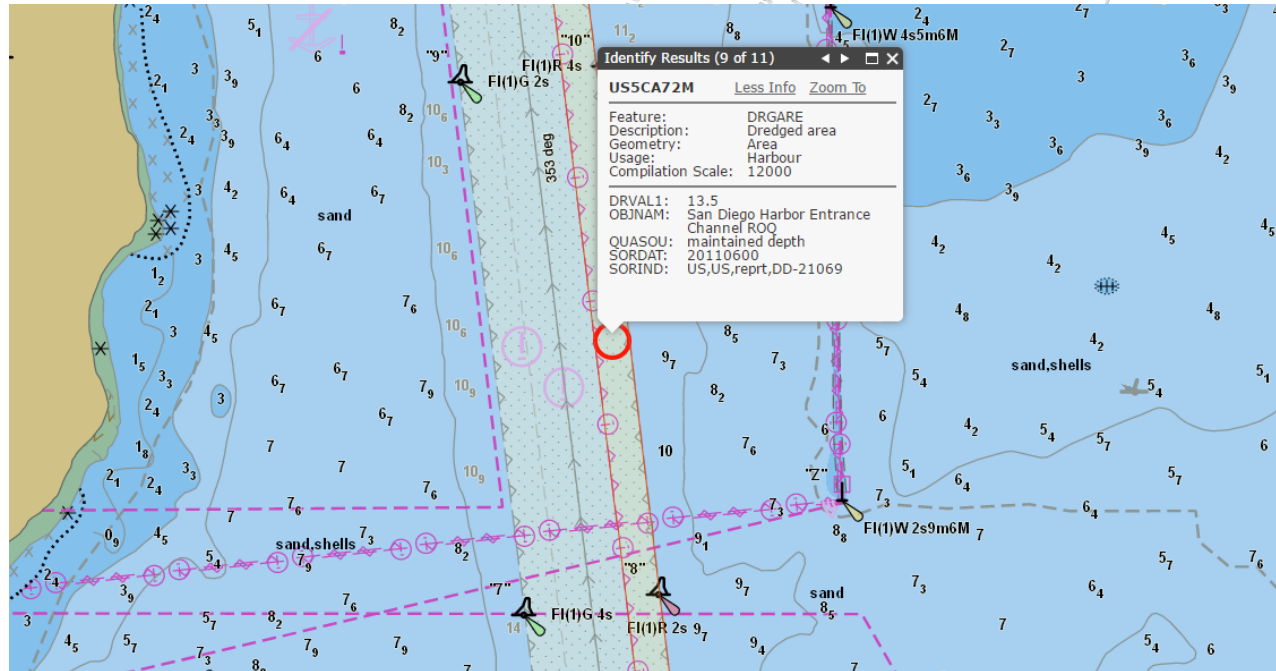
Standardization of USACE data formats



Improving Chart Content



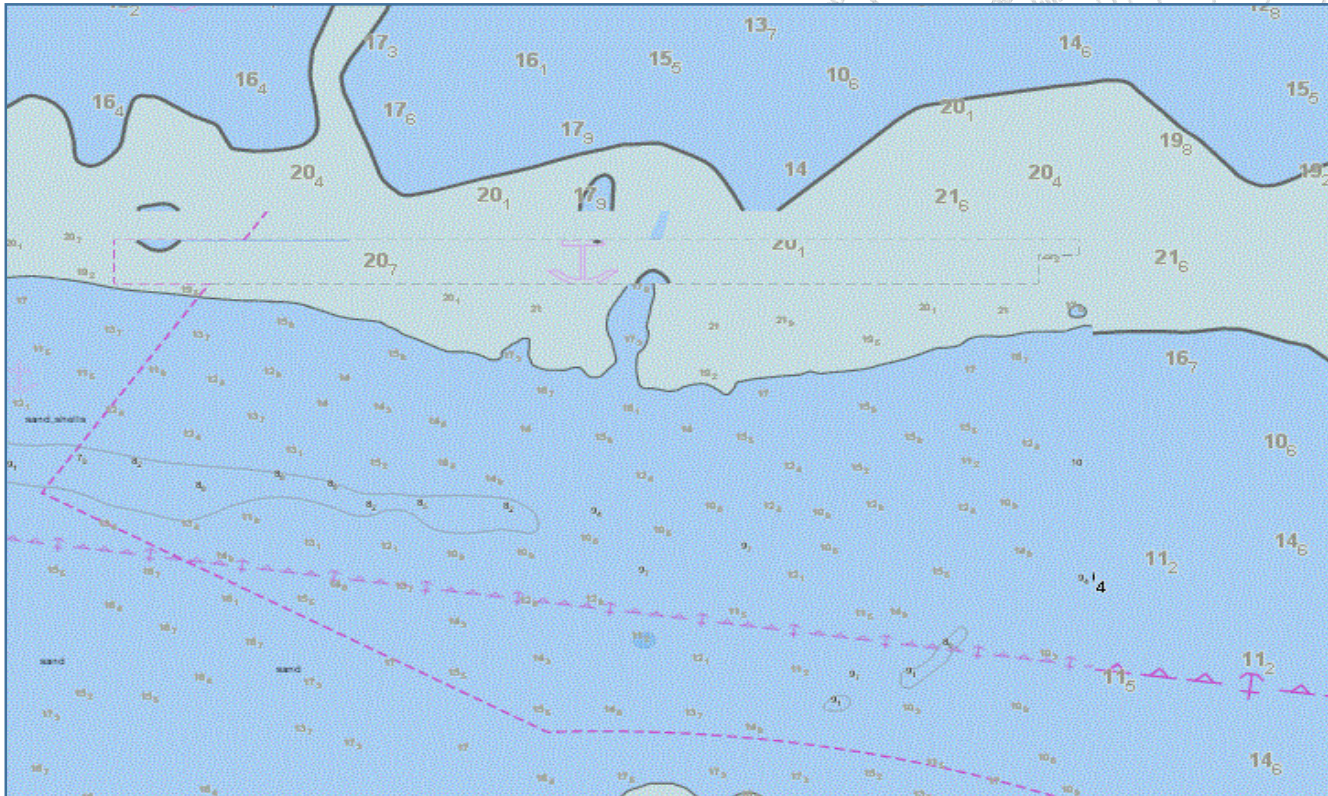
Provide timelier data
Standardization of USACE data formats



Office of Coast Survey
National Oceanic and Atmospheric Administration

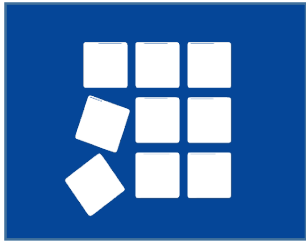
Improving Chart Content

Data Consistency and general ENC clean-up

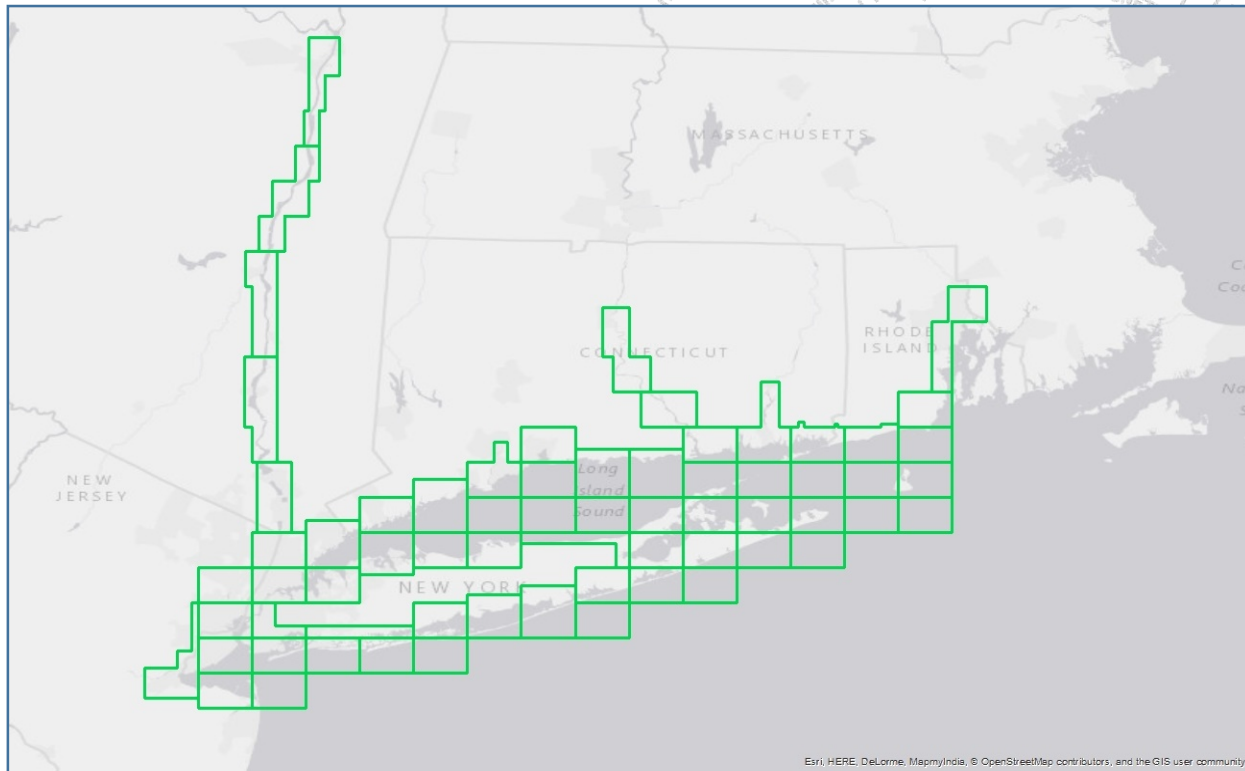


Office of Coast Survey
National Oceanic and Atmospheric Administration

Improving Chart Schemes

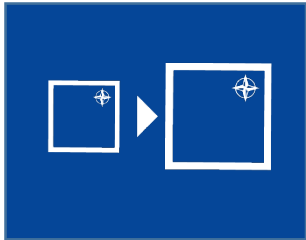


Create an orderly layout for ENCs

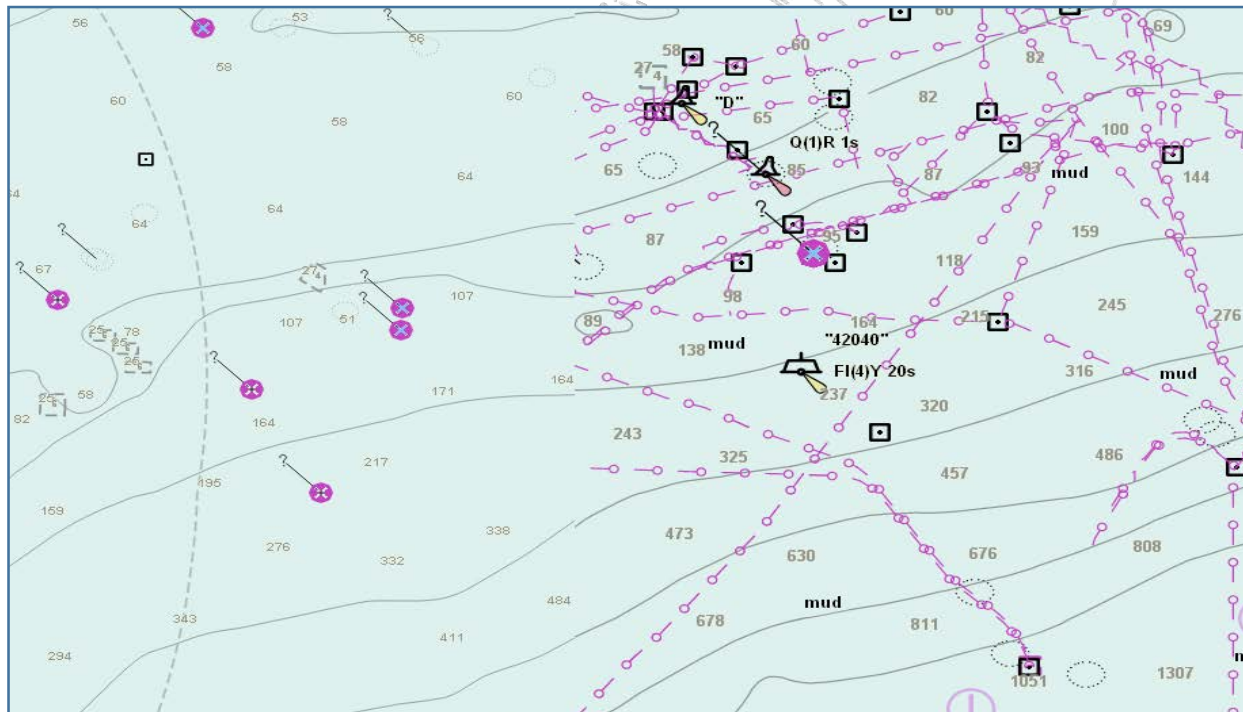


Office of Coast Survey
National Oceanic and Atmospheric Administration

Improving Chart Schemes

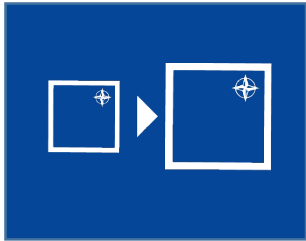


Standardize Scales

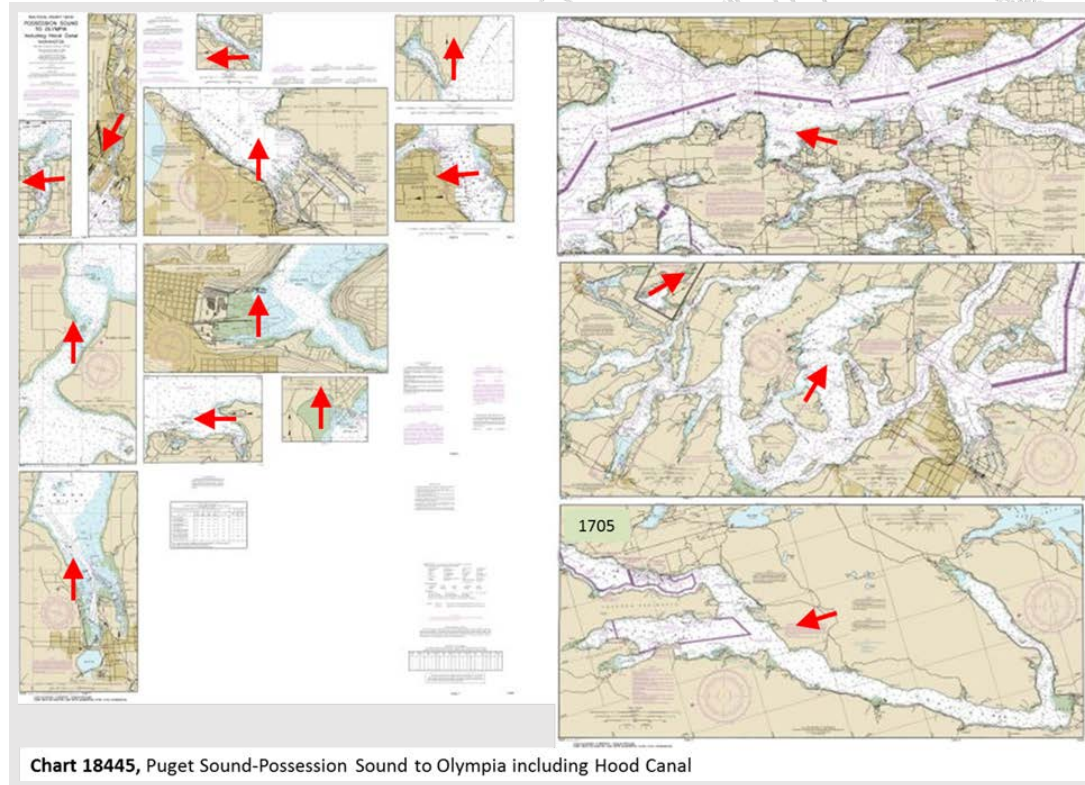


Office of Coast Survey
National Oceanic and Atmospheric Administration

Improving Chart Schemes

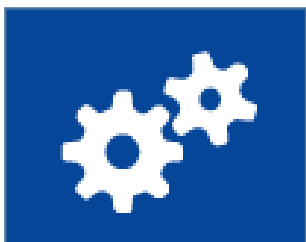


Improve chart coverage



Office of Coast Survey
National Oceanic and Atmospheric Administration

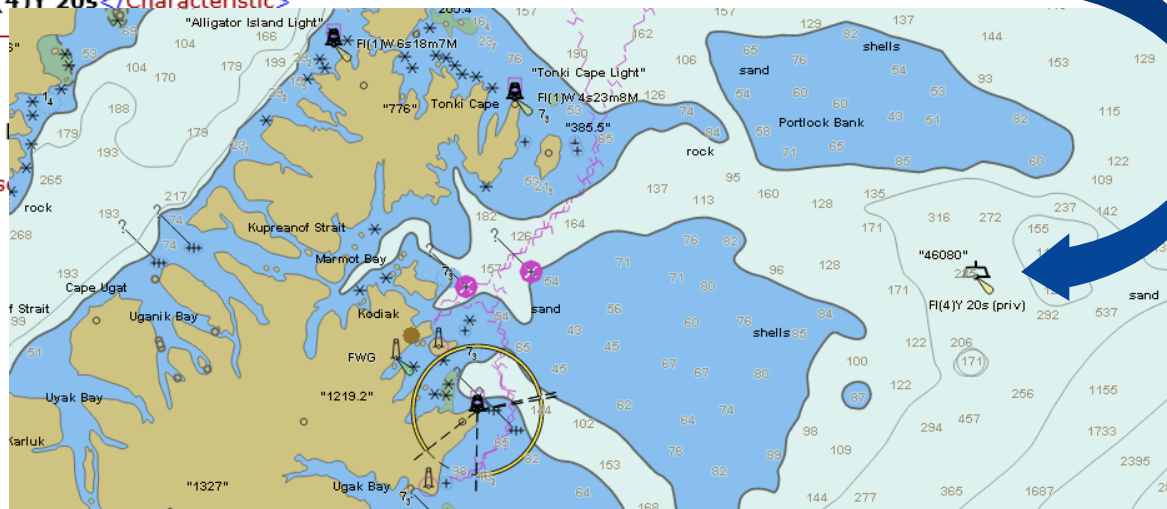
Improving Chart Production Efficiency



Increase efficiency

Direct input of USCG light list data into production

```
<District>17</District>
<LLNR>982</LLNR>
<XREF/>
<Aid_x0020_Name>NOAA Data Lighted Buoy 46080</Aid_x0020_Name>
<Aid_x0020_Type>FD</Aid_x0020_Type>
<Position_x0020__x0028_Latitude_x0029_>57-56-20.804N</Position_x0020__x0028_Latitude_x0029_>
<Position_x0020__x0028_Longitude_x0029_>149-57-36.680W</Position_x0020__x0028_Longitude_x0029_>
<Characteristic>FI (4)Y 20s</Characteristic>
<Both_x002F_Night_>
<Height/>
<Range/>
<Location/>
<Structure>Yellow
<Remarks/>
<RACN_x0020_Mors
```




Office of Coast Survey
National Oceanic and Atmospheric Administration

Marine Spatial Data Infrastructure

Open data policy MSDI

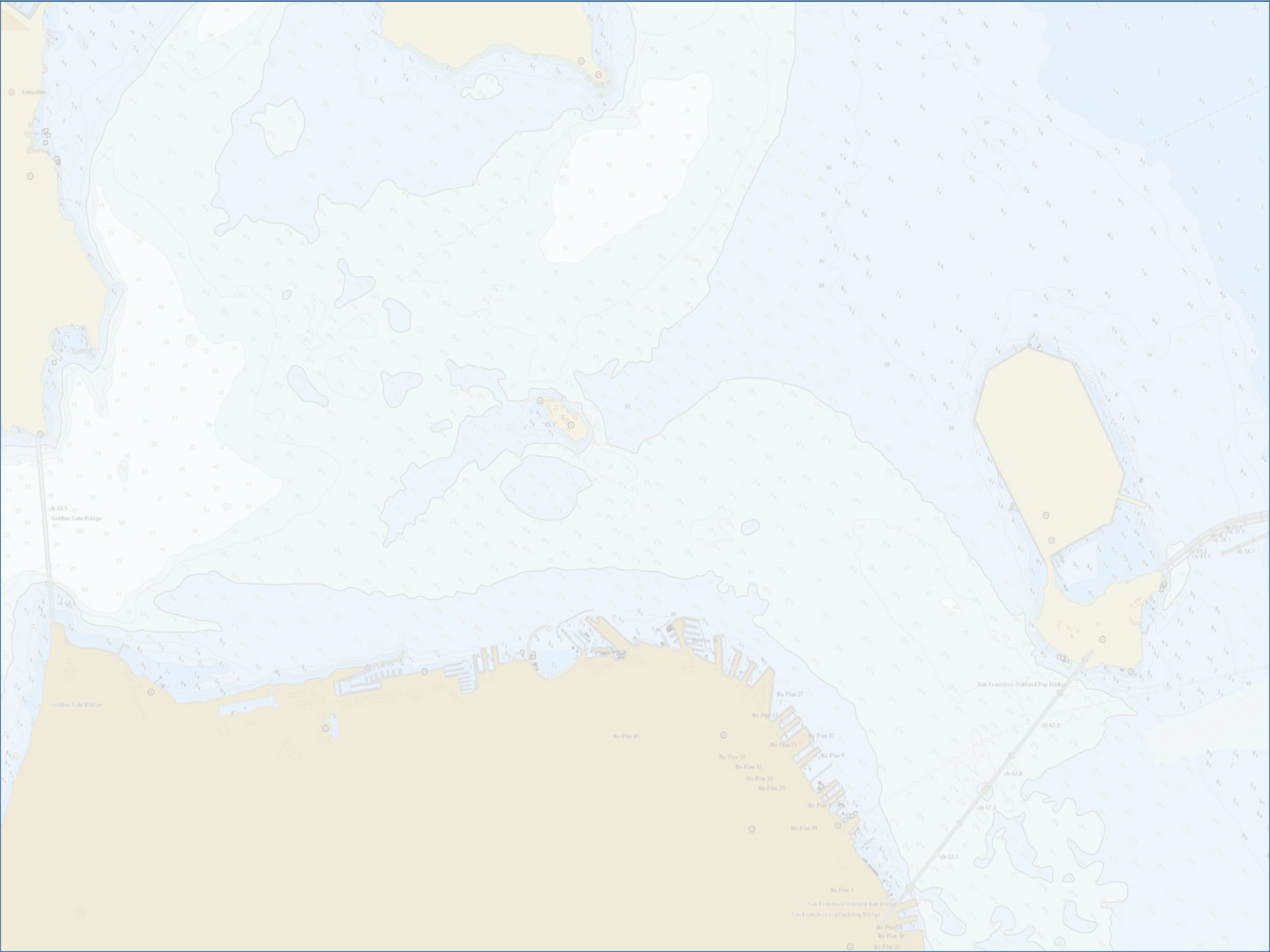
Electronic Navigational Chart Themes

Extracted at run time and updated weekly with latest edition ENC Cells.

Title	Source	ArcGIS Viewer	REST Service	Web Map Service	KML	Download Shapefiles	Download Metadata
Coastal Maintained Channels	OCS						
U.S. Maritime Limits & Boundaries	OCS						
Shipping Lanes and Regulations	OCS						

To access the *Graphical Interface*, [return to the NOAA ENC® Direct to GIS home page](#).





ch 38.5
Golden Gate Bridge

Golden Gate Bridge

PIERS
PIERS
PIERS

No Pier 43

No Pier 37

No Pier 35

No Pier 33

No Pier 31

No Pier 29

No Pier 27

No Pier 25

No Pier 23

No Pier 21

No Pier 19

No Pier 17

No Pier 15

No Pier 13

No Pier 11

No Pier 9

No Pier 7

No Pier 5

No Pier 3

No Pier 1

San Francisco-Oakland Bay Bridge

ch 62.1

ch 62.8

ch 67.2

ch 62.1

San Francisco-Oakland Bay Bridge

San Francisco-Oakland Bay Bridge

No Pier 35

No Pier 36

No Pier 37

ch 30.5

ch 31.4

ch 34.1